

SLOANE SQUARE



ART \ CULTURE \ DESIGN \ FOOD

MAY 2019

BLOOMING MARVELLOUS

DON'T MISS THE
FLOWER SHOW AND
CHELSEA IN BLOOM

Colour pop

GET THE FLORAL FEELS
WITH NEW STORE EVARAE'S
FABULOUS SWIMWEAR

Fuel up

DINE IN THESE HOTSPOTS
DURING CHELSEA IN BLOOM

Local Hero

MEET THE WOMAN BEHIND
THE KENSINGTON AND
CHELSEA FOUNDATION

INDIAN OCEAN

INSPIRATIONAL OUTDOOR FURNITURE





Harrods



7 **CALENDAR**

Dates for your diary
this May and June

12 **NEWS**

All the latest local
goings-on in Chelsea

16 **COMMUNITY NEWS**

The stories that matter

19 **SUMMER FÊTE**

Fun in the sun for all the
family to enjoy



20 **FASHION NEWS**

Stay ahead of the game with
the latest boutique openings

25 **TRENDING**

Shop the floral trend

29 **ART ROUND-UP**

Chelsea's latest exhibitions

33 **SPOTLIGHT**

Meet Vestalia Chilton, founder
of the K+C Art Weekend

35 **ARTISAN CHELSEA**

Celebrating Chelsea's rich
artisanal landscape

37 **CHELSEA AWARDS**

It's getting closer – meet the
Masters of Craft contenders

42 **SURVEY**

Have your say

45 **FOOD NEWS**

New gourmet delights

48 **A FOODIE ADVENTURE**

Our top places to eat during
the Chelsea Flower Show



COVER

Cool swimwear
brand Evarae has
hit Chelsea, and our
wardrobes will be
all the better for it.
Photo: Mark Newton

Page 25

Contents / May 2019

51 **PROPERTY**

Expertise on the area from the Knight Frank team

56 **CHELSEA IN BLOOM**

What to expect this year

61 **IN FULL BLOOM**

A close look at the Montessori Garden

65 **BEAUTY NEWS**

The spring products we're hankering after

69 **HAIRCARE**

Do blondes really have more fun?

72 **TOP 10**

The best picks for the Chelsea in Bloom theme



75



72

74 **IN DETAIL**

Exploring the process behind the new Hermès fragrance

76 **9 TO 5**

At work with the manager of the new Physic Garden Café

78 **LOCAL HERO**

We talk to Susan Dolton about the K&C Foundation

80 **SOCIAL**

Who's who at the latest openings, parties and events

82 **MY CHELSEA**

The RHS's Sue Biggs on what to expect at the Flower Show



22

SLOANE SQUARE

is produced for Cadogan by

Publishing Business

3 Princes Street
London W1B 2LD
020 7259 1050

Cadogan

10 Duke of York Square
London SW3 4LY
cadogan.co.uk

Editor

Charlotte Pasha
020 7259 1054
charlotte@pubbiz.com

Deputy Editor

Cally Squires
020 7259 1058
cally@pubbiz.com

Sub-editor

Holly Kyte

Writers

Kate White

Advertisements

Caroline Warrick
020 7259 1051
caroline@pubbiz.com

Bridget Rodricks
020 7259 1059
bridget@pubbiz.com

Publisher

Adrian Day
020 7259 1055
day@pubbiz.com

Printed on ECF (Chlorine Free) paper using fibre sourced from well-managed forests. All inks vegetable based. Our printers are certified to ISO 14001 Environmental Management.



Publishing Business is a member of the Professional Publishers Association and observes the PPA Code of Publishing Practice.



@SloaneSquareMag
@DOYSQ
@SloaneStreetSW1
@Pavilion_road



@SloaneStreetSW1
@PavilionRoad
@dukeofyorksquare
@SloaneSquareMag



By Appointment
to H.M. Queen Elizabeth II
Grosvenor
Partridges, London

Partridges
LONDON

Celebrate our 47th
anniversary with the
Chelsea Flower Gin range.

Make your own with
our Original or Bergamot,
or pick up our ready
to go mix.



2-5 Duke of York Square, London SW3 4LY
Telephone: 020 7730 0651 • FREE LOCAL DELIVERY
www.partridges.co.uk

Follow us on @partridgesfoods and @partridgesfoods

Calendar

SLOANE SQUARE / MAY 2019



PHOTOS: HERRY LAWFORD

MAY 21–25

EVENT: RHS CHELSEA FLOWER SHOW

The RHS Chelsea Flower Show is famous worldwide and receives up to 150,000 guests for good reason. Come and see an array of beautiful show gardens at the Royal Hospital Chelsea, created by some of the world's most esteemed designers, florists and nurseries, not to mention the Duchess of Cambridge. Colourful, immersive and truly lovely, the show also explores the health benefits of gardening, from nutrition to exercise, and the medicinal qualities of plants. You can shop and dine on floral fancies in the area, too.

Tickets from £32 for RHS members.

Tickets and more information at rhs.org.uk



Events

MAY & JUNE

diary

SOUTH GARDEN
PHOTO: ANDREW WILSON



JUNE 8–9

OUTDOORS: OPEN GARDEN SQUARES WEEKEND

Open Garden Squares Weekend is your chance to explore more than 100 of London's most exciting, hidden away and downright gorgeous gardens and green spaces. See the gardens that are rarely open to the public, from rooftops to experimental spaces. Don't miss Cadogan Place South, a garden which is beautifully maintained all year round. The event celebrates the wonderful contribution gardens make to London life, from the social and cultural to the environmental.

Adults from £15, opensquares.org

MAY 23

EVENT: CHELSEA PHYSIC GARDEN

To celebrate the Chelsea Flower Show, glasshouse manager at the Chelsea Physic Garden Jess Snowball will lead a tour of the famed historic glasshouses. Home to a huge array of tropical and exotic plants, the glasshouses have their very own microclimate and offer a glimpse into plant life around the world. The glasshouses have been in use for more than a century. 11.30am–12.30pm.

Tickets £30, chelseaphysicgarden.co.uk



COMBAT STRESS ART BY VETERAN H. B. H.





BOWMAN SCULPTURE BY EMILY YOUNG,
MASTERPIECE LONDON 2019

JUNE 27–JULY 3

ART: MASTERPIECE

Masterpiece London, sponsored by the Royal Bank of Canada and held at the Royal Hospital Chelsea, is an exciting forum where collectors, gallerists and artists can mingle, discover and buy. From furniture and jewellery to art and design, there are more than 160 exhibitors who specialise in different periods and pieces. The fair is renowned worldwide, and a real privilege to have here in Chelsea.

General admission £38.50.

T: 020 7499 7470, masterpiecefair.com

JUNE 10–JULY 1

EXHIBITION: THE NATIONAL ARMY MUSEUM

Outlook is an exhibition from Combat Stress, featuring artwork created by veterans as part of their recovery from trauma. It serves to showcase both the psychological impact of war, and how art can be beneficial post-trauma.

For some veterans, making art can help channel thoughts towards peaceful topics, and it's a relaxing, soothing activity. The creative process can also be used to try to make sense of their traumatic experiences by releasing pent-up emotions.

**Free, National Army Museum,
Royal Hospital Road.**

T: 020 7730 0717, nam.ac.uk



PHOTO: RGS-IGB

MAY 30

WORLD: RESPONSIBLE TRAVEL

This topical discussion with a panel of experts poses the hard questions, such as: are you determined to reduce the impact of your holidays on the planet? If you're interested in doing so, come along for discussions, solutions and more. The question "What does it mean to travel well?" has never meant so many different things to so many different people.

7pm. Tickets £10, Royal Geographical Society,

1 Kensington Gore. T: 020 7591 3000, rgs.org

Calendar

MAY 10–JUNE 15

THEATRE: WHITE PEARL

White Pearl is a new play with a modern take on the themes of race, beauty and identity. When the potential advert of a start-up skincare brand's skin cream is leaked, it goes viral for all the wrong reasons. It marks Anchuli Felicia King's international playwriting debut and promises to be thought-provoking.

Tickets from £12, Royal Court Theatre, Sloane Square.

T: 020 7565 5000, royalcourttheatre.com



PHOTO: NIALl MCDIARMID



JUNE 28–30

ART: KENSINGTON + CHELSEA ART WEEKEND

The Kensington + Chelsea Art Weekend is back. Now in its second year, the calendar highlight is your chance to experience talks, exhibitions, walking tours, public art displays and more, showcasing the best of all the wonderful culture right here in Chelsea. Discover new galleries and authors and go along to interesting events – it'll be a jam-packed weekend.

Visit kcaw.co.uk

JUNE 7

CONCERT: CADOGAN HALL

Woman to Woman is on tour and will be at Cadogan Hall on June 7. The trio Judie Tzuke, Beverley Craven and Julia Fordham have formed a 'girl band' and will be performing hit songs including 'Safe' and 'Promise Me', among others.

Tickets from £29.50, Cadogan Hall, 5 Sloane Terrace.

T: 020 7730 4500, cadoganhall.com



JULIA FORDHAM, BEVERLEY CRAVEN AND JUDIE TZUKE



MONDRIAN SOFA COLLECTION, DESIGN JEAN-MARIE MASSAUD.

Poliform

Poliform UK
Kings Road, London
Design Centre Chelsea Harbour, London
Wigmore Street, London - opening soon
poliformuk.com

POLIFORM.IT

News / May

SLOANE SQUARE / MAY 2019

THIS YEAR, the Design Museum in Kensington has opened nominations for Beazley Designs of the Year to the public, to celebrate the museum's 30th anniversary. Beatrice Galilee, Associate Curator of Architecture and Design at the Metropolitan Museum of Art, is curating this year's exhibition, which champions innovative designs. It is divided into categories, including Architecture, Digital, Fashion, Product, Graphics and Transport. Nominations can be made at designmuseum.org.



ÉCARLATE AFTERNOON DRESS, DIOR AUTUMN/WINTER 1955 HAUTE COUTURE COLLECTION, V&A

THE CHRISTIAN DIOR EXHIBITION at the V&A Museum, *Christian Dior: Designer of Dreams*, has been extended, after tickets for the planned dates sold out within three weeks of opening. Originally due to run until mid July, you will now be able to catch the exhibition until September 1. "We knew that Christian Dior would be popular, but we have been overwhelmed by the phenomenal visitor response to date. I would like to thank our visitors who have gone to such great lengths to see this extraordinary exhibition so far. I am delighted that we can extend the run, ensuring that as many people as possible have the chance to see it before it closes," says Tristram Hunt, director of the V&A. The exhibition examines the legendary French designer's fascination with British culture and shows more than 500 objects, including gowns, accessories, photographs, perfume and more.

THE CHELSEA OLD TOWN HALL relaunch has been officially unveiled, following works which began in 2018. With rooms carefully restored to their Victorian grandeur, the Grade II-listed building is the perfect place to hold a function, with beautiful marble-floored corridors and ornate, carved ceilings.



Miista at 41 Duke of York Square,
Brick by Brick.

miista

/m.i.s-ta/

Designed in London | Handcrafted in Spain

miista.com @miista

02077304111

ICONIC IMAGES GALLERY is holding an exhibition entitled Chelsea Girls and Likely Lads, with its start date coinciding with Kensington + Chelsea Art Weekend. Each of the subjects pictured lived, worked and played in Chelsea, with photos by Terry O'Neill, Norman Parkinson and Justin de Villeneuve.



JEAN SHRIMPTON BY TERRY O'NEILL



TOM JONES will be performing at Live at Chelsea at the Royal Hospital on June 15. Famed for hits such as 'It's Not Unusual' and 'Delilah', Tom Jones was knighted by the Queen in 2006. This is the fifth year of the Live at Chelsea Summer Concert Series, where previous artists have included Rufus Wainwright and James Blunt. Other performers this year include Toto and Gipsy Kings, and a portion of the ticket sales will be donated towards the care of the Chelsea Pensioners and maintenance of the Grade I-listed site.



PENHALIGON'S HAS MOVED – but not far. It has made its way along the King's Road towards the Sloane Square end, and opened its new shop at 25 King's Road in April. The fragrances and branding remain as gorgeous as ever.

CHELSEA FC FOUNDATION SOCCER SCHOOL is returning to popular Spanish resort La Manga this summer. Around 250 children from the UK and Europe took part last year and the academies, open to boys and girls aged between 6 and 16, offer participants three hours of daily training for a week from expert coaches, as well as an official Chelsea Foundation training kit.

From €295 (approx. £260) per person, lamangaclub.com.



THE CROWN RING
18ct gold and diamond
Crown Rings, from £595

1 South Molton Street, London W1
41 Cadogan Gardens, London SW3
Harrods / Harvey Nichols /
Liberty / Selfridges /
The Mandarin Oriental, Hong Kong
0800 138 1659

Annoushka

Community News / May

FRANCIS HOLLAND SCHOOL, Sloane Square, has been shortlisted in this year's Wellbeing in Schools Awards, run by mental-health charity Place2Be. The awards honour the excellent work being done to promote mental-health awareness. Headmistress Lucy Elphinstone says, "I am honoured that the focus we place on the wellbeing of pupils and staff at Francis Holland is being recognised. Building resilience and helping children manage anxiety, pressure and depression are priorities for us."



PUPIL AND PASTORAL AMBASSADOR CAROLINE SWENSON, PLACE2BE'S ZOE JUNIPER AND HEADMISTRESS LUCY ELPHINSTONE



FORMER CHELSEA RESIDENT Bob Marley is being honoured with a blue plaque at his house on Oakley Street, where he moved to from Jamaica in 1977. It was there that he lived when he recorded the hit song 'One Love'. David Olusoga, English Heritage trustee and Blue Plaques Panel member, says, "From engineering to music, this year's blue plaques remind us of the enormous range of human achievement. Marley was more than a brilliant musician; he became a cultural icon who blazed a trail for other black artists."

A SECURITY communications group has launched on the King's Road. Taking inspiration from the successful initiative recently trialled on Sloane Street, retail owners are joining a WhatsApp group to easily keep each other abreast of security news. Please contact Steve Medway at Cadogan to be added to the group.



HAMPTONS INTERNATIONAL has partnered with Refill, working to help prevent plastic pollution at source. It makes it easy to reuse and refill your water bottle. The Refill app shows your local free Refill stations – there will now be one in every Hamptons International branch. It is the first national estate agent to join the movement, which has also partnered with John Lewis and Pret a Manger.



ARTIST ANOUK MERCIER, drawer-in-residence for hospital charity CW+ at Chelsea and Westminster Hospital, has created individual portraits of each of the 50 female nurses depicted in a 1919 photograph from the hospital's archives. A selection of these drawings are currently being exhibited at Chelsea and Westminster Hospital. Members of the public are invited to help identify each woman, with the hope that it will result in discovering each nurse's identity. Fittingly, this year is the 300th anniversary of the original Westminster Hospital, founded in 1719.

Origin of Sloane Square

The area was originally a manor belonging to a local landowner, Irish doctor Sir Hans Sloane. He was Lord of the Manor in 1712. In 1771 builder Henry Holland acquired the building rights from the heirs of Sir Hans and planned a development called Hans Town. It was an 89 acre site with over 300 houses with Sloane Square being the central feature.

ROY PALMER is the self-described "Sloane Square Scribe". A reader of the magazine, he got in touch to tell us about how he writes out texts such as the "Origin of Sloane Square" and "The King's Road" in beautiful calligraphy. Roy is homeless, and rather than beg for money he has set up an Instagram account and seeks work using his calligraphy talent. He used to spend each day on a bench by Rag & Bone in Sloane Square, but has recently been invited to sit outside Nyumba Salon. "Many people in Sloane Square are aware of my work and many respect what I am doing to get out of a difficult situation," Roy says.

roypalmerlondon@gmail.com

LOCAL AUTHOR Daniel Pembrey has a novel due out in September, *The Scientist of Berlin*. It introduces Pembrey's new detective character David Collins, who, in this story, is hired to investigate a billionaire Californian geneticist's family past in wartime Berlin. audible.co.uk

JANE FALLOWFIELD PHOTO: HELEN MURRAY



JANE FALLOWFIELD has been appointed the new literary manager for the Royal Court Theatre. Vicky Featherstone, artistic director of the theatre, says, "I'm so thrilled to be able to welcome Jane to the Royal Court. I've long been an admirer of her work. I can't wait to see how she will take the Royal Court forward for the writers over the next few years." Jane replaces Chris Campbell, who managed the Royal Court's literary department for more than eight years.

THE ART OF PERSUASION

WARTIME POSTERS BY ABRAM GAMES



Special exhibition

6 April – 24 November 2019

Book now: nam.ac.uk

NATIONAL
ARMY
MUSEUM

   #AbramGames

 Nearest tube
Stoane Square

TO OUR MINDS, the Chelsea Summer Fête, held on June 22 from 12–5pm in Duke of York Square and on Pavilion Road, marks the official opening of summer, so come along for traditional fête games, family fun, food and so much more.

Those looking for a sporty start to the day can ease in with an 11am yoga session hosted by KXU Gym, while from 12pm you can head to the running track, which will be transformed into a skills session with the help of the Chelsea FC Foundation. If you fancy swinging a racket, you can pop down to the Fever-Tree mini courts for a rally or two to celebrate the Fever-Tree Championships and the start of the tennis season.

After all that activity, you're sure to be hungry – and the good news is, the amazing array of foodie delights on Pavilion Road are just around the corner. Wander up and down the charming street and pick what tempts you most. Will it be something sizzling from Provenance Butchers' BBQ, delicious rolls, sandwiches or cakes from Bread Ahead, or something cold and possibly fizzy from Pavilion Wines or Hans' Bar & Grill?

Cadogan Hall will be giving musical performances all day long for you to enjoy, but if you fancy something quieter, Peter Jones & Partners will be reading tried and tested favourite stories on the green, and the National Army Museum team will be on hand with a whole host of activities.

Brand new for the fête this year is the Goodwood Settrington Cup. The Regional Heat will take place as the fête opens, and you can race around the mini track during the afternoon. And for the ultimate kid-friendly option, everyone's favourite entertainers Sharky & George will be holding the party of the summer.

With something for the whole family, the Chelsea Summer Fête highlights how much al-fresco fun there is to be had in Chelsea. Grab your sunglasses and your friends and family, and come along!

Full timings can be found on the website: inchelsea.co.uk



The Chelsea Summer Fête

SUMMER FUN FOR ALL THE FAMILY IS HERE! DIARISE IT NOW



Fashion / News

SLOANE SQUARE / MAY 2019



ON-TREND BELGIAN fashion label Essentiel Antwerp has opened its first standalone UK store in Sloane Square, spread across two floors. The brand, founded by husband-and-wife team Inge Onsea and Esfan Eghtessadi, is known for fun prints, bright colours and fashion that doesn't take itself too seriously. "This store opening is a huge step forward for Essentiel Antwerp and the growth of our company, both in the UK and globally. It has always been our dream to open a shop in London and we couldn't be more excited!" says CEO Esfan Eghtessadi. Us, too.
27a Sloane Square

BALENCIAGA has just opened at 203–204 Sloane Street. The two-storey space has a chic warehouse layout and a minimalist design: think glass and metal shelves, industrial furniture and plenty of rails that stock will no doubt fly off in minutes. Carpets are bold and do look out for the mannequins – they're unusually realistic.



DELVAUX HAS LAUNCHED a collaboration with fashion visionary Jean Colonna. Known for his distinctly rock 'n' roll androgynous aesthetic, Jean has created an oversized version of the brand's Brillant bag in a soft, relaxed style that comes in two colours, Noir or Végétal. Merging form and function, the bag has two detachable pouches and several practical small compartments.
Brillant l'xxl, £7,900, 183–184 Sloane Street

west one bathrooms ltd.
LONDON



KALLISTA

ANN SACKS

0333 011 3333

westonebathrooms.com



MENSWEAR
BRAND BUDD has opened a pop-up shop in Chelsea. The brand has been making shirts for more than 100 years, so no wonder its ready-to-wear selection,

dresswear and accessories are great. You could also check out the brand's made-to-measure service – when in doubt, turn to the pros.

93 Lower Sloane Street



COOL FASHION BRAND RIXO has a pop-up at 74 King's Road. Its dresses are flattering, feminine and feature the prettiest patterns. Immerse yourself in the RIXO world with weekly in-store events like a Q&A with the founders, flower-arranging sessions and beauty treatments. Plus, you can bring in pre-owned RIXO pieces in exchange for a discount off your next purchase, an example of founders Henrietta and Orlagh's obsession with the cyclical nature of fashion. Cadogan's Hugh Seaborn says, "RIXO is a fresh young brand doing things differently – a free-spirited antidote to fast fashion."

LOUIS VUITTON has reopened at 190-192 Sloane Street, following a significant renovation that managed to stay true to its listed Brutalist building. Spread over three floors, interiors are bold – expect colour pops and a statement staircase. Excitingly, you can find the brand's Rare & Exceptional dresses exclusively at the store, allowing clients to customise chosen pieces to their exact needs, bringing a couture touch to ready-to-wear. The dresses are inspired by red-carpet gowns worn by stars such as Emma Stone and Julia Roberts.





TORTUGA

Gold and diamond
necklace pendant

Cassandra Goad
147 Spene Street
London SW1X 9BZ
Tel 020 7730 2202

cassandragoad.com

One of Chelsea's finest family homes.



Mulberry Walk, Chelsea SW3

The historic double-fronted exterior of this Edwardian property conceals an interior of exceptional light and quality. Scarcely seen in London, vast open living space lays host to rooms of distinguished grandeur that are flooded with natural light.

- Available on a long let basis
- Approximately 5,245 sq ft
- Furnished/Unfurnished

Guide price

£13,950 per week



Arya Sahari looks forward to helping you.

arya.sahari@knightfrank.com

+44 20 7349 4310

[knightfrank.co.uk](https://www.knightfrank.co.uk)

Connecting people & property, perfectly.

All potential tenants should be advised that, as well as rent, an administration fee of £250 and referencing fees of £40 per person will apply when renting a property. There will also be a £40 charge to register your deposit with the Tenancy Deposit Scheme if applicable. All fees shown are inclusive of VAT. Please ask us for more information about other fees that will apply or visit www.knightfrank.co.uk/tenancies. Knight Frank is a member of the ARLA Client Money Protection Scheme and our redress scheme for consumers is Property Business Scheme.

EVARAE



In bloom

SHOP THIS SEASON'S
FLORAL FASHION
MUST-HAVES

PHOTO: MARK NEWTON

Fashion / Women & men



JANE TAYLOR
Bettina hat, £760,
253 King's Road



**ESSENTIEL
ANTWERP**
Floral print midi
dress, £230,
27a Sloane Square



FREE PEOPLE
Kendal satin midi
skirt, £88,
141 King's Road

EMILIA WICKSTEAD



PRADA
Double match
Hawaii printed 90
silk scarf, £315,
43-45 Sloane Street



EVARAE
Cassandra one-
piece swimsuit in
red poppy, £270,
61 Chelsea Manor
Street



WHISTLES
Yellow Ditsy floral
midi skirt, £99,
31 King's Road

J. CREW
Swim trunks in
blue floral, £78,
16 Sloane Square



TED BAKER
Ted Baker Skin floral-
print short-sleeve
T-shirt in mid-grey,
£55, Peter Jones,
Sloane Square



ETON
Floral-print silk
tie, £75, Harvey
Nichols, 109-125
Knightsbridge



BOSS
Floral-print pocket
square in Italian silk,
£45, 36-38 Sloane
Square



OLIVER BROWN
Floral-print
poplin shirt, £79,
75 Lower Sloane
Street



VERSACE
Chain Reaction floral-print
trainers, £780, Harvey Nichols,
109-125 Knightsbridge



JOJO MAMAN BÉBÉ
Floral A-line dress,
£20, 12 Cale Street



CARAMEL
Gerbera baby hat
in red, £39,
250a King's Road

TROTTERS



BODEN
Floral embroidered
top, £28-£32,
20-23 Duke of York
Square



POLARN O. PYRET
Baby floral frill-waist
bodysuit in blue,
£16, Peter Jones,
Sloane Square



TROTTERS
Angelina cross-
back dress in pink
petit rose, £34,
34 King's Road



ZARA
Flower-print
playsuit, £16.99,
65 Duke of York
Square



Art / Round-up

SLOANE SQUARE / MAY 2019

JEAN MICHEL BY GÉRARD FROMANGER, 2018 © THE ARTIST, COURTESY CAROLINE SMULDERS



MAY 17-19

DRAW ART FAIR LONDON

The UK's first dedicated modern and contemporary drawing fair will see 60 exhibitors fill three floors of the Saatchi Gallery, presenting curated solo and group shows. Exhibitors have been invited to juxtapose drawings with related paintings, sculptures and videos, providing unique insights into the creative process.

Offering an immersive visitor experience, the fair will present an engaging talks programme for the duration of the event. Laurent Boudier, founder and director of Draw Art Fair London, said: "Drawing from this period is powerful, expressing itself both through line and the various textures of different techniques – from pencil stump and charcoal stick to watercolour and digital line."

Saatchi Gallery, Duke of York Square
T: 020 7811 3070, saatchigallery.com

JUNE 26-29

THE EDGE OF LANDSCAPE

Nick Holmes Fine Art is presenting new paintings by contemporary artist Fred Ingrams that celebrate the flat, geometric beauty of the Fens. "Fred Ingrams is a maverick, an artist who has discovered beauty in a landscape where others see monotony and isolation," Nick said.

"He has a huge following of international collectors, who are drawn to the originality of the works, the emotions they convey and Fred's bold use of colour."

Iris Studios, Adrian Mews

T: 07887 775537, nickholmesfineart.com



WET EVENING ON METHWOLD FEN BY FRED INGRAMS

FISHERMEN BY NICHOLAS TURNER



MAY 16-JUNE 1

THE NATURE OF TIME

More than 30 still-lives and landscapes by acclaimed artist Nicholas Turner will go on show at Jonathan Cooper in May for the London-born, Monmouthshire-based painter's third solo show with the gallery.

Nick is fascinated by colour relationships and compositional design. His work evokes a sense of reflection and romanticism. It is held in many private and public collections, including the Royal Collection.

Jonathan Cooper, 20 Park Walk

T: 020 7351 0410, jonathancooper.co.uk

Discover the world of floristry with *Moyses Stevens*



Join the floral revolution with a course at the *Moyses Stevens Flower School*. Explore the intricacies of hand-tied bouquet design on our taster sessions or develop your skills further with 1 & 2 day courses.

Discover the secrets behind the distinctive *Moyses style*, practice with our Design Team and produce a luxurious bouquet of your own.

Modern, spacious and perfect for birthday parties as well as corporate team building, this is the flower school London has been waiting for.



MOYSES STEVENS FLOWER SCHOOL



An appointment to
1811 Circus Road West
Battersea Power Station
London SW11 8EZ

Unit 13 Circus Village West
Circus Road West
Battersea Power Station
London SW11 8EZ
+44 (0) 20 7183 5650

flowerschool@moysesflowers.co.uk

MOYSESEFLOWERS.CO.UK

TWO FIGURES BY PATRICIA BARKER



JUNE 13-17 OPEN ART EXHIBITION

More than 500 paintings and sculptures from established and aspiring artists will go on view for the Chelsea Art Society's open art exhibition. The innovative works will cover a wide range of styles, from figurative to abstract, oil to watercolour, print to sculpture. The annual event, now in its 72nd year, allows visitors to view and acquire works from £100.

There will be significant awards for artists, including the Wedlake Bell Award for a Young Artist, and a free sketching session led by practising artist members of the society on June 14 from 5-8pm. Luke Martineau, president of the Chelsea Art Society, said: "We were thrilled with the breadth of top-class entries last year, which led to many sales, and are pleased to be able to offer a number of valuable awards that clearly encourage an ever-higher standard of submissions."

Chelsea Old Town Hall, King's Road

E: chelseaartsociety@gmail.com, chelseaartsociety.org.uk

INITIATE SERIES BY LIONEL SMIT, 2018



MAY 10-JUNE 8 DESTRUCTURE

Lionel Smit is best known for his contemporary portraiture, executed through large-scale canvases and sculptures. The art he creates is defined by a profound and ongoing dialogue between sculpture and painting.

Whether executed in bronze or paint, his work offers the viewer an entry point into the variety and richness that lie beneath every face we encounter in life. This exhibition will showcase new work and sculptures by the renowned South African artist.

Everard Read, 80 Fulham Road

T: 020 7590 9991, everardlondon.com

LAVENDER FIELDS BY DAVID PEARCE



JUNE 4-22 BRIAR AND BRAMBLE

David Pearce works in mixed media on linen and is known for his accomplished understanding of colour. The self-taught artist, who is based near Padstow, draws inspiration from the Cornish coastline. According to Cricket Fine Art, his work "roots you to the spot and draws you in with just the briefest of viewings".

Cricket Fine Art, 2 Park Walk

T: 020 7352 2733, cricketfineart.co.uk

KENSINGTON + CHELSEA ART WEEKEND

A weekend of
art and culture
in West London

**28-30
JUNE 2019**

KCAW.CO.UK

#KCAW19
INFO@KCAW.CO.UK

SLOANE SQUARE / MAY 2019



ARTISTS' STUDIOS, GALLERIES, MUSEUMS and iconic institutions will throw open their doors to the public for the Kensington + Chelsea Art Weekend in June, with a packed programme of pop-up events, workshops and exhibitions.

The borough will be "erupting with culture", according to the event's founding director Vestalia Chilton, with more than 100 participants. Expect amazing art, incredible visual effects, a DJ-off and a performance that will see musicians creating music through digital code.

With institutions such as the V&A and the Design Museum supporting the weekend and an inspiring advisory board including iconic photographer Terry O'Neill, Tony Elliot, founder of Time Out and Geoffrey Matthews, Chief Executive of the Chelsea Arts Club, you can expect great things. In Sloane Square, a public art installation will celebrate Hans Sloane and the concept of curiosities past, present and future. Elsewhere, artist Tor Ewen will paint a mural on hoardings on Walton Street for the Love Kensington and Chelsea Street Art programme, after her design won a public vote. Visitors will be invited to take a self-guided tour of seven different zones across the borough, including Sloane Square and the streets surrounding Masterpiece. A dedicated art bus will circulate throughout the weekend, connecting the seven

Get ready: Kensington + Chelsea Art Weekend is here



VESTALIA CHILTON,
FOUNDING DIRECTOR

zones and featuring specially recorded broadcasts, informing visitors about each area and what to see.

There will be guided walks on artists, architecture and more, while the Walk Eat Talk Eat tour will reveal the hidden foodie gems that locals love.

Vestalia said: "I'm really interested in propagating the arts to bring them closer to wider audiences and to move away from the ivory-tower concept of art being just for a certain type of person. Kensington + Chelsea Art Weekend is a chance for people to get reacquainted with their local area, make new connections and new friends and discover that little artistic gem down the street that they've never visited."

Kensington + Chelsea Art Weekend runs from June 28–30. View the full programme at kcaw.co.uk

VIVI

RESTAURANT & BAR
AT CENTRE POINT

THE ULTIMATE ALL-DAY DINING EXPERIENCE

STUNNING INTERIORS, BEAUTIFULLY BRITISH MENUS
& RETRO COCKTAILS



BOOK A TABLE AT SOHO'S MOST EXCITING NEW BRASSERIE

WWW.VIVIRESTAURANT.CO.UK

VIVI, Centre Point, 11 St Giles Square,
London WC2H 8AP



Art / Artisan Chelsea

SLOANE SQUARE / MAY 2019

London Craft Week: Artisan Chelsea



CHELSEA HAS A PROUD HISTORY OF CRAFTSMANSHIP AND IS CONTINUING TO BLEND TRADITIONAL TECHNIQUES WITH INNOVATION. ARTISAN CHELSEA HONOURS THAT, WRITES CHARLOTTE PASHA

LONDON CRAFT WEEK (MAY 8–12) is now in its fifth year, and this annual highlight is a time to discover, explore and enjoy, as more than 240 galleries, studios and designers offer workshops, tours, masterclasses and more.

Now, Chelsea is at the forefront with Artisan Chelsea. Historically, Chelsea played a key role in the Arts & Crafts movement and today, the area remains at the epicentre of architecture, food, art, interiors and fashion, with artisans finding a welcome home here. The week casts a spotlight on the huge creativity of the area, celebrating both the independent boutiques and flagship stores.

Sponsored by Cadogan, Artisan Chelsea will host immersive, educational experiences. Cadogan's own event explores the exquisite architecture and notable individuals of Chelsea, from the perspective of those who have spent 300 years helping to craft it. Leather lovers will enjoy Smythson's session on leather-making and Bentley's masterclass

in leather luggage craftsmanship.

Independent shoe brand MIISTA is holding a workshop on handcrafted raffia shoes and Anya Hindmarch will be holding a workshop where you can weave your very own bag to take home. On the King's Road, The Fashion School will teach you how to make beautiful Liberty-print shorts, perfect for summer.

Foodies can rejoice in tastings at London Cheesemongers and Ice Cream Union, while Cassandra Goad has launched a new pendant, with proceeds going to Horatio's Garden charity. At the Belmond Cadogan, you can learn about the considered renovation of this gorgeous hotel over tea or cocktails.

Chelsea is rightly proud of being an artisanal hub, supporting independent crafts and their makers and keeping individuality alive. This, and more, is celebrated in Artisan Chelsea. See you there.

May 8–12. Many events need to be booked in advance. See londoncraftweek.com.

HAN'S[®]
BAR & GRILL



A TASTE OF SUMMER AT YOUR NEIGHBOURHOOD RESTAURANT

Hans' Bar & Grill is a neighbourhood restaurant in the heart of Chelsea inspired by namesake Sir Hans Sloane serving an all-day seasonal menu, rooted in British produce.

JOIN US FOR DINNER & ENJOY
A COMPLIMENTARY GLASS OF WINE OR HOUSE COCKTAIL

Quote 'SloaneSquare' on booking
Valid until 31 August when ordering a minimum of two courses
12.00pm-10.30pm

For reservations, call +44 (0)20 7730 7000
hansbarandgrill.com

Community / The Chelsea Awards

SLOANE SQUARE / MAY 2019



THE CHELSEA AWARDS

THE CHELSEA AWARDS
ARE DRAWING EVER
CLOSER. WITH THE
COUNTDOWN ON, WHO
WILL YOU NOMINATE?

WE HAVE LOVED RECEIVING YOUR nominations for your favourite Chelsea haunts so far, from artisans and boutiques to people, restaurants and businesses. We're passing them all to a panel of independent judges, who will cast their votes. Winners will be announced at the awards ceremony on October 8 at the Saatchi Gallery. Please do keep sending your nominations to chelseaawards@pubbiz.com

WORLDWIDE REMOVALS

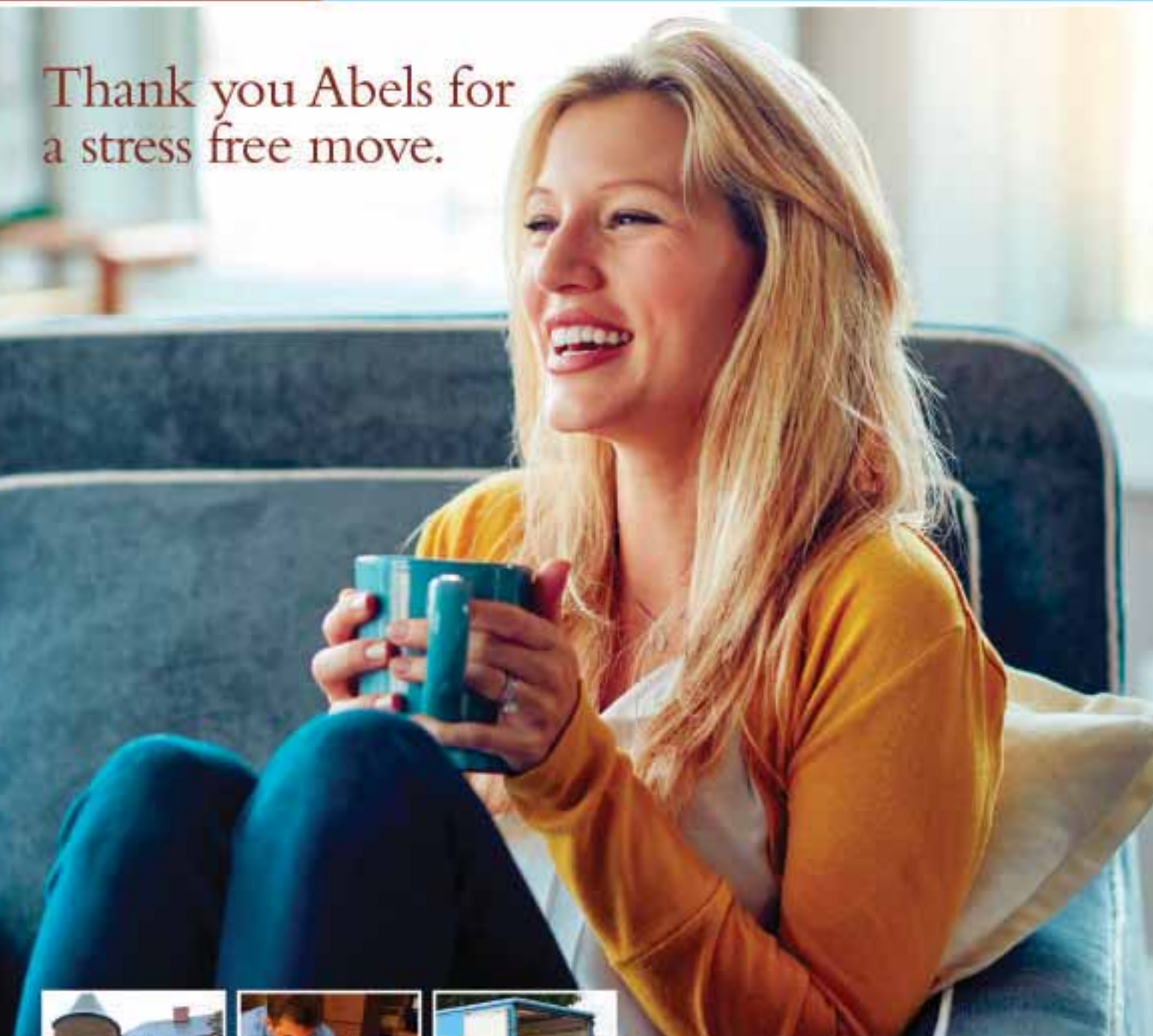
UK Residential, European &
International Moving



ABELS

THE ART OF MOVING

Thank you Abels for
a stress free move.



- UK Residential Removals • Worldwide Relocations
- Weekly European Removals • Storage Services
- Antiques, Fine Art Packing, Storing & Moving
- Car Transportation & Storage
- Office & Commercial Moving

Telephone: 020 3740 2829
E-Mail: enquiries@abels.co.uk



INVESTORS
IN PEOPLE



ASSOCIATION
OF REMOVALS
COMPANIES



www.abels.co.uk

AWARD CATEGORIES

ONLY IN CHELSEA

a business that brings
something unique to
the area

COMMUNITY HERO

an organisation or person
that has benefitted the
community through their
actions

CULTURAL CHAMPION

an organisation or person
that has enriched
Chelsea's culture

IN GOOD TASTE

someone who has made
Chelsea more delicious

COMMUNITY COLLABORATION

businesses who have
joined forces for the
greater good

MASTERS OF CRAFT

an artisan who elevates
the everyday to the
extraordinary

FUTURE FORWARD

a company innovating to
meet tomorrow's
challenges

With London Craft Week and Artisan Chelsea at the forefront of our minds, thoughts have turned to the Masters of Craft category. We are lucky to have so many examples of stellar craftsmanship and creators of beautiful things locally. Famed cutlery and kitchenware designer David Mellor (4 Sloane Square) is a second-generation business renowned for its quality products, which are easy to use and beautiful to look at. It is exactly that merging of form with function that Masters of Craft will celebrate. The notion of mastering one's craft extends from jewellers and architecture to fashion and interiors, and one only need stroll around Sloane Street, the King's Road or Duke of York Square to see these in abundance.

Mastering a craft means you become the very best at whatever it is you do, and this is true of lovingly prepared, beautifully presented and excellent-tasting food. Walking along Pavilion Road demonstrates the breadth of food creativity in the area, with the likes of new fishmonger The Sea The Sea, Ice Cream Union and London Cheesemongers elevating the ordinary to exceptional.

This very much applies to Rhubarb, the catering company who will be overseeing the delicious canapés



DAVID MELLOR



RHUBARB

WE HAVE ENJOYED BEING A PART OF THE RISE IN VEGETABLE-LED DINING AND INFORMAL DINING BECOMING A MAINSTREAM FEATURE

at our awards event. To be the best at one's craft, one must stay ahead of the curve, and when it comes to food trends, discerning customers demand a lot. "The biggest shift in taste which we have enjoyed being a part of is the rise in vegetable-led dining and informal dining becoming a mainstream feature of menu design. From sharing plates to food stations, we have been advocates of this food trend, while bringing creativity to vegetarian dishes and green-led plates," Kristy says.

And at the awards themselves, you can look forward to "truly seasonal, British bites, beautifully and creatively presented". We would expect nothing less.

It won't be long until the Awards ceremony is here. Please do email chelseaawards@pubbiz.com with your nominees for all seven categories.

We're thrilled to celebrate the people and places making such positive contributions to our area, and we really look forward to hearing from you.



CADOGAN

AMERICAN
SMILE
SLOANE SQUARE



INEOS



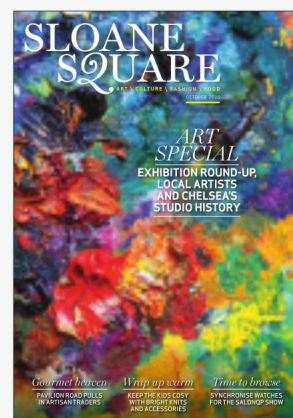
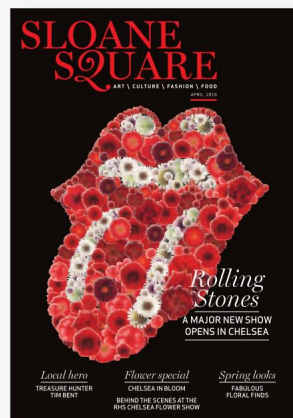
INDULGENT

CONTEMPORARY BRITISH DINING
IN THE HEART OF KNIGHTSBRIDGE

Jumeirah
CARLTON TOWER



Located at Jumeirah Carlton Tower On Cadogan Place
020 7858 7250 | reservations@theribroom.co.uk | theribroom.co.uk



SLOANE SQUARE

PLEASE SHARE YOUR
THOUGHTS IN OUR SURVEY,
FOR A CHANCE TO WIN A £250
JOHN LEWIS GIFT CARD

Sloane Square magazine is rooted in its community and its readers – you. We want to write about the topics that most appeal, and we would love to know what you're passionate about.

We would be very grateful if you could go to **sloanesquaremagazine.co.uk/survey** to fill in our online survey – it should take a maximum of seven minutes to complete.

In return, you will be entered into a prize draw with the chance to win a £250 shopping voucher at Peter Jones.

Many thanks in advance for your time. We very much look forward to reading your responses.

GET SUMMER READY WITH KXU

KXU is a boutique fitness and wellness destination located on 241 Pavilion Road. This pay-as-you-go, non-membership, venue has 3 ultra-sleek studios, offering the very best in HIIT, Strength, Yoga, Barre and Cycle.

KXU's Med-spa completes its 360° approach to wellbeing with cutting edge treatments and therapies.

To help you get ready for the summer, KXU are offering new clients:

- 1 Free Class
- 50% off a Cryotherapy Session

*Offer New clients only, until 31/08/19.
Browse this page at kxu.co.uk to reserve.



Pavilion Road
London, SW1X 0BP
kxu.co.uk
@kxulondon

ROYAL ALBERT HALL AND ENGLISH NATIONAL BALLET PRESENT

Cinderella

6 – 16 JUNE 2019

A magical in-the-round ballet

Enjoy an unforgettable night at the ballet with our Hospitality Packages

From fine dining to meeting the dancers and spectacular views from your own private box, our range of luxury experiences are the perfect special treat.



Dancers: Svetlana Beresneva and Pappas and Gaudin; Prince: Luca; and Cinderella: Charlotte Wilson; Photo: © J. J. J. J.



Royal Albert Hall

Call: 020 7589 8212
royalalberthall.com



English
National
Ballet



ARTS COUNCIL
ENGLAND

SLOANE SQUARE / MAY 2019



THE BLACK PENNY has opened at 55 Duke of York Square. The friendly, cosy café serves excellent brunch options – do try the green eggs – and delicious coffee throughout the day, making it the perfect place to grab a bite with friends or perch with your laptop. There are cocktails come night-time, too.

CADOGAN'S BY ADAM HANDLING is now serving afternoon tea. The two-hour experience starts with a range of sandwiches, like Valley Smokehouse smoked salmon and Clarence Court duck egg, paired with five different breads that are baked daily in the 24-hour bakery. Sweet dishes pay homage to Sir Hans Sloane, whose global expeditions have inspired the merging of international flavours with top British ingredients: think Granny Smith and lemongrass cremeux, and passion fruit curd tart with coconut mousse. It's tradition, with a twist.
The Belmond Cadogan, 75 Sloane Street



TO CELEBRATE THE DIOR EXHIBITION at the V&A museum, The Franklin hotel has launched an afternoon tea, £55, inspired by the French designer. Beautifully presented by Michelin-starred chef Alfredo Russo, a highlight is J'adore, a peanut and chocolate concoction served with vaporised Calvados and presented in a Dior-inspired perfume bottle. Who says the fashion crowd don't eat?
24 Egerton Gardens



Ovington Square, SW3 1LJ

A Stunning 1650 ft² THREE Bedroom First and Second Floor Maisonette in this fabulous Knightsbridge location occupying an imposing corner plot in the heart of the village with great light and a terrace.

Spectacular 25' x 18' Dual Aspect Reception room, separate Study/Den, Fully Fitted Kitchen, Master Bedroom with en-suite bathroom, Two further Double Bedrooms, Family Bathroom

Floorplan from justin@proprium.co.uk

Long Let Unfurnished £2200 pw

www.proprium.co.uk
020 7589 6298
justin@proprium.co.uk



PROPRIUM
Established 1974

INDIAN RESTAURANT KAHANI

has launched a new cocktail menu, featuring nine cocktails with ingredients like tandoori pineapple, freshly squeezed lime juice, homemade spiced rum and cinnamon powder. Do try The Wilbraham – it contains rye whisky, suze, sweet vermouth, cherry liquor and orange bitter.
1 Wilbraham Place



GAUCHO IS INTRODUCING several dog-friendly initiatives. The Muttropolitan treat menu and the fact that dogs are now welcome at Gaucho between 12pm and 6pm are game changers for sunny days.
89 Sloane Avenue

PEGGY PORSCHE
CHELSEA has now opened. The all-day café serves up savoury fare and pretty cakes in an even prettier setting – think pink terrazzo tables, a live chef station, pastel everything and a peony wall. Teatime is our highlight, but whatever the meal, you'll want to Instagram everything.
219 King's Road



Restaurants / Flower Show

SLOANE SQUARE / MAY 2019

ELEVENSES AT PEGGY PORSCHEN

THE RECENTLY OPENED Peggy Porschen parlour on the King's Road is the second London café by the German designer baker. The pastel pink corner store is always in bloom with an Instagrammable seasonal display adorning the entrance.

Inside, the interior is pretty pink and marble, with flower murals on the walls and a peony-inspired bar. Try a slice of the La Vie en Rose layer cake, or one of the treats from the new floral collection like the wild berry and elderflower cake. 219 King's Road

Where to eat during the **FLOWER SHOW**

GO BOTANICAL WITH THESE FLORAL-
INSPIRED, PLANT-BASED AND
AL-FRESCO DINING IDEAS.
BY CALLY SQUIRES





AL-FRESCO LUNCH AT THE CHELSEA PHYSIC GARDEN

SUPER CLOSE TO THE SHOW is Chelsea's divine Physic Garden on Royal Hospital Road, which is London's oldest botanic garden. The café serves breakfast and lunch, with a dedicated children's menu for little ones.

During Chelsea in Bloom, glasshouse manager Jess Snowball will be leading a tour of the garden's historic glasshouses, home to scores of exotic plants. The guided tour takes place on May 23 at 11.30am, and it's advisable to book a spot in advance, as places are limited.

66 Royal Hospital Road



AFTERNOON TEA IN THE ROSEBERY LOUNGE

RECENTLY REOPENED after a refurbishment, fire and another refurb, the Mandarin Oriental's florally named Rosebery room is serving afternoon tea once again – as it has done since the early 1920s.

The lounge is adorned with fresh flowers, and the cakes are served on a sculptural tree-shaped bronze stand. A must-try is the hotel's traditionally brewed green Matcha tea, and scones served with a delicate rose jelly. Plus a glass of Ruinart's rosé champagne wouldn't go amiss.

66 Knightsbridge





Caraffini never ceases to amaze. Invariably full and buzzing with its smart clientele of locals and visitors, this elegant and welcoming Italian restaurant is something rather special. Particularly as we move into Spring and Summer the outside seating is a real bonus, providing a delightful alfresco element to any occasion. Come and see for yourself what a great team runs the place and be assured of a friendly welcome and a wonderful dining experience.

Caraffini

61-63 Lower Sloane Street,
London SW1W 8DH

Tel: 020 7259 0235

www.caraffini.co.uk

SLOANE SQUARE / MAY 2019

PROPERTY SPOTLIGHT

LIVING IN CHELSEA HAS ALWAYS BEEN DESIRABLE, WITH THE BEST IN LOCATION AND AMENITIES. CHARLOTTE PASHA TALKS FINE PROPERTIES AND THE KING'S ROAD TO THE TEAM AT KNIGHT FRANK

ONE NEED ONLY WANDER AROUND Bywater Street or Cadogan Gardens to see that Chelsea is a charming place to live. Near to the shops of the King's Road, the culture of Sloane Square and the restaurants on Pavilion Road, we are fortunate to have a local community feel in the heart of London.

James Pace is a partner at Knight Frank and its office head in Chelsea. "I love working in Chelsea. I have always loved the area since spending my teenage years stomping up and down the King's Road. I think it's the diversity of places to go out to, the types of retail outlet, the historic mix of architecture, the culture and the different people that you get here, all in a

ABOVE: ONSLOW GARDENS



THE SALES AND
LETTINGS TEAM
AT KNIGHT FRANK,
KNIGHTSBRIDGE

BELOW:
BYWATER STREET

small space on the banks of the Thames.”

Harry Dawes, office head at Knight Frank in Knightsbridge, agrees. “This area has a very soft place in my heart; I’ve trudged the streets over and over. I do everything on foot as much as possible. I love Chelsea’s architectural heritage and its garden squares, namely Lennox Gardens and Cadogan Square – they’re little oases of tranquillity in the hustle and bustle.”

Of course, one can’t discuss life in Chelsea without mentioning the King’s Road. “I love the character of the King’s Road, it’s an enormous allure. There is still a bohemian feel to some of it, and with the redevelopment of Duke of York Square, you have world-class shopping, but also the artisanal feel of a market square. Cadogan have done incredibly well to create that enriched environment. Like with Pavilion Road, it’s incredible – I like the way it’s not just run of the mill, and places like Wulf & Lamb are great to see,” Harry says.

On the subject of food, James certainly makes the most of working in Chelsea. “I love the Ivy Chelsea Garden and



KNIGHT FRANK PHOTOS TAKEN IN ST LUKE'S HOUSE (BELOW), A FIVE-BEDROOM NEW-BUILD HOUSE ON ST LUKE'S STREET. CURRENTLY ON THE MARKET FOR £9,850,000

JAMES PACE AND HARRY DAWES



Sticks'n'Sushi, along with Ramsey's on Royal Hospital Road and Cambio de Tercio," he says.

But it's not just food and pretty streets. At the heart of the property industry are the individuals working in it. "The real allure is I get to meet so many interesting people. Not just our clients and customers – the people involved in property tend to be quite extroverted. There's a lot of characters in the industry," Harry says.

Chelsea's residential options are excellent. "I've worked on some amazing homes in the area. Houses on St Leonard's Terrace will always stand out for me, overlooking the Royal Hospital and Burton Court. You can go there in the summer and you're 150 metres from the King's Road, watching a game of cricket. The houses are beautifully proportioned – it's probably my favourite street. The classic living of a large family house with a traditional first-floor drawing room, great family room and kitchen is very much available here," Harry says.

James tells me about a house he sold in the Boltons Conservation Area. "The house

was previously owned by a Middle-Eastern family who had a 'Bond-like' gadget that allowed the front wall to sink into the pavement to allow cars to park in front of the house. They once had Margaret Thatcher step in to secure planning consent for the works that had been done to it in the Eighties."

He goes on: "Lionel Bart's old house in Seymour Walk was THE party house of the 1960s and 70s. It had an incredible drawing room and master bedroom overlooking the very private garden with a swimming pool. You could just picture the likes of the Rolling Stones swinging from the chandelier to the minstrel's gallery in the drawing room. I actually managed to sell it to the new owner on a day when there was a power cut, which says everything about the quality of the place!"

Everyone plays favourites, and for James, it's Uncle Monty's house from *Withnail and I*. "It's one of my favourite films of all time. The owner hadn't changed anything from the film. It had the best reception room I've ever seen, with amazing views of one of London's

“CHELSEA IS AN ESTABLISHED AREA AND INTERNATIONAL BUYERS WILL ALWAYS EXPLORE IT AS A DESTINATION”

biggest gardens, and the owner had also spent years collecting antique marble and mahogany from the gentlemen's clubs in St James's.”

As for what's new, The Glebe will be coming to the market soon. “There are only going to be nine units within the development in total – seven apartments and two villas – the likes of which have rarely been seen in London. The scale and volume and quality of finish is breathtaking – more collectable works of art in one of the most secure developments than simply homes,” James finishes.

So who is living in these homes? “Chelsea has a very European demographic. It's an established area and international buyers will always explore it as a destination,” Harry says. “There are great school options, and there's a real family vibe.”



LENNOX GARDENS

Knight Frank is a headline sponsor of the inaugural Chelsea Awards. “We're an international firm with a strong local presence and supporting local business as a community is really important to us,” Harry says. “There is genuine value to be found in Chelsea.” Buyers are clearly recognising this – the number of viewings and new applicants in Knightsbridge in January of this year had each risen by eight per cent from the same time last year, according to Knight Frank research.

With the King's Road's significant redevelopment plans adding further appeal, the property market in Chelsea is certainly desirable. Watch this space.

Knight Frank, 52–54 Sloane Avenue and 352a King's Road. Pop into either office to chat about the market and collect your copy of the latest Wealth Report.

BELOW LEFT: A TYPICAL CHELSEA STREET
BELOW RIGHT: SLOANE SQUARE





IS YOUR TEAM IN SYNC?

We match exceptional temporary and permanent support staff to businesses across a range of industries

Call us on 0207 917 1801 today

PIERCELY DISTINCTIVE | BUSINESS SUPPORT | VIRTUAL | PRIVATE | HOSPITALITY
tiger-recruitment.co.uk

TIGER
 Recruitment



"Lose weight and gain fitness in record time - with the Bodydoctor's workout, anything is possible"
The Sunday Times Style Magazine



BODYDOCTOR GROUP TRAINING



BODYDOCTOR FIT KIDS



PILATES



BESPOKE PERSONAL TRAINING

**Personal Training • Pilates • Reflexology • Physiotherapy • Nutrition Clinic
 Post Natal • Sports Specific Preparation • Injury Rehabilitation Programmes**

For a complimentary consultation and tour of our unique 3,500 sq ft Eaton Square training and treatment space call us on 0207 235 2211 or email us on info@bodydoctor.com

The Crypt, St Peters Church, 119 Eaton Square, London, SW1W 9AL

Tel: 0207 235 2211 Email: info@bodydoctor.com

www.bodydoctor.com

The Best Training In The World, And It's On Your Doorstep



UNDER *the SEA*

CHELSEA IN BLOOM
RETURNS BIGGER AND
BETTER THAN EVER

A floral display
from last year's
competition

Floral / Chelsea in Bloom

SLOANE SQUARE / MAY 2019



CHELSEA IN BLOOM IS THE AREA'S ANNUAL FAMED FLORAL ART SHOW (May 20–25), coinciding with the Chelsea Flower Show. It is a wonderful opportunity for local shops, restaurants and hotels to adorn their exteriors with gorgeous flowers, taking inspiration from a theme, which this year is Under the Sea. Produced by Cadogan in association with the Royal Horticultural Society (RHS), Chelsea in Bloom always promises to be a visual sensation, but this year it will also cast a spotlight on the serious issue of plastic pollution in our seas by partnering with the charity Plastic Oceans UK.

There's a competitive element to the show, too, with entrants battling it out to win the show's various coveted trophies by attempting to create the most stunning floral feats. Winning displays take away Gold, Silver, Bronze and Merit awards, while standout efforts are honoured in the special category awards, such as Best Floral Display, the Innovation Award and the People's Champion Award, voted for by the public.

Last year's Summer of Love theme saw participants take inspiration from the Royal Wedding and the cultural revolution of the Sixties and Seventies to create their



displays, enlivening everywhere from the King's Road and Duke of York Square, to Sloane Square, Pavilion Road and Sloane Street with fresh flowers.

With over 80 entrants this year, the show looks set to be bigger and brighter than ever, with breathtaking displays that are popular with Chelsea residents, bloggers and shoppers alike transforming the neighbourhood.

Look out for ambitious displays from Monica Vinader, winner of last year's Best Floral Display, as well as 2018's

Floral / Chelsea in Bloom



Inspiration for
some of this year's
displays



Gold-medal-winners Dubarry, Hamptons International, Oliver Peoples, Marshall Wace, Hackett, Rabbit, Kiki McDonough, Poetry, Salon Sloane, Sarah Chapman, Moyses Stevens, Kiehl's and 11 Cadogan Gardens. And don't forget to vote for your favourite in the People's Champion Award, won last year by Harry's Dolce Vita.

Also not to be missed are the central floral installations by florists All for Love London and Maison de Fleurs.

Tying in with the theme of Under the Sea, the design for 2019 will feature a showstopping giant coral reef in Sloane Square, blooming with aquatic life like a giant sea turtle made from seed pods and bark shavings, plus an octopus with tentacles made from pincushion proteas and celosia heads.

Elsewhere in Chelsea visitors will be able to spot a giant whale's tail made from dyed blue willow cane, and a huge Orca whale installation made from delphiniums, hydrangeas and gypsophila.

Focusing on the partnership with charity Plastic Oceans UK, there will be an installation on Sloane Square to raise funds and awareness. The design is fun and interactive, with a wider message to convey, and we can't wait to see it.

Free, visit chelseainbloom.co.uk for more information and to vote for the People's Champion Award from May 21.



STORES TAKING PART INCLUDE:

11 CADOGAN GARDENS	HANS' BAR & GRILL	REALLY WILD
& OTHER STORIES	HEIDI KLEIN	RED VALENTINO
ARTISAN DU CHOCOLAT	HOBBS	RIGBY & PELLER
BOODLES	J. CREW	RIXO
BLAIZ	JIGSAW	ROGER VIVER
BLUEMINT	KIEHL'S	SALON SLOANE
BODEN	KIKI MCDONOUGH	SARAH CHAPMAN
BRORA	KINGS OF CHELSEA	SCRIBBLER
BRUNELLO CUCINELLI	LEMA	SLOANE PLACE
BUDD LONDON	LIMOZ LOGLI	SLOANE SQUARE HOTEL
BULGARI	LINKS OF LONDON	SLOANE STREET DELI
CASSANDRA GOAD	LORO PIANA	SMYTHSON
CLARENDON FINE ART	LULULEMON	SPACE NK APOTHECARY
CLUB MONACO	MARSHALL WACE	STICKS'N'SUSHI
COSMETICS À LA CARTE	MICHAEL JOHN	TATEOSSIAN
DANIELA DE MONTBY	MIISTA	TASCHEN
DAVID MELLOR	MONICA VINADER	T.BA
DERMALOGICA	MOYSES STEVENS	TOAST
DUBARRY	NIKE WOMEN'S	THE BABY COT SHOP
EF MEDISPA	NO8 PARTNERSHIP	THE CHELSEA GENERAL STORE
ESSENTIEL ANTWERP	OLIVER PEOPLES	THE FOLD
FREE PEOPLE	OLIVIA VON HALLE	THE WHITE COMPANY
GALLERY MESS	PELTON	TOM DAVIES
GIUSEPPE ZANOTTI	PETER JONES	WALPOLE STREET DENTAL PRACTICE
HACKETT	POETRY	YVES DELORME
HAMPTONS INTERNATIONAL	POLIFORM	ZAEEM JAMAL
	POLPO	
	PROVENANCE VILLAGE BUTCHER	
	RABBIT	
	RAG & BONE	



Check out last year's displays at
chelseainbloom.co.uk/archive



**HANDS
ACROSS
THE
BOROUGH**



HANDS UP FOR COMMUNITY

The Kensington & Chelsea Foundation's
HANDS ACROSS THE BOROUGH campaign
combats local isolation and loneliness.

Find out more at thebandcfoundation.com
or call **020 7229 5499**

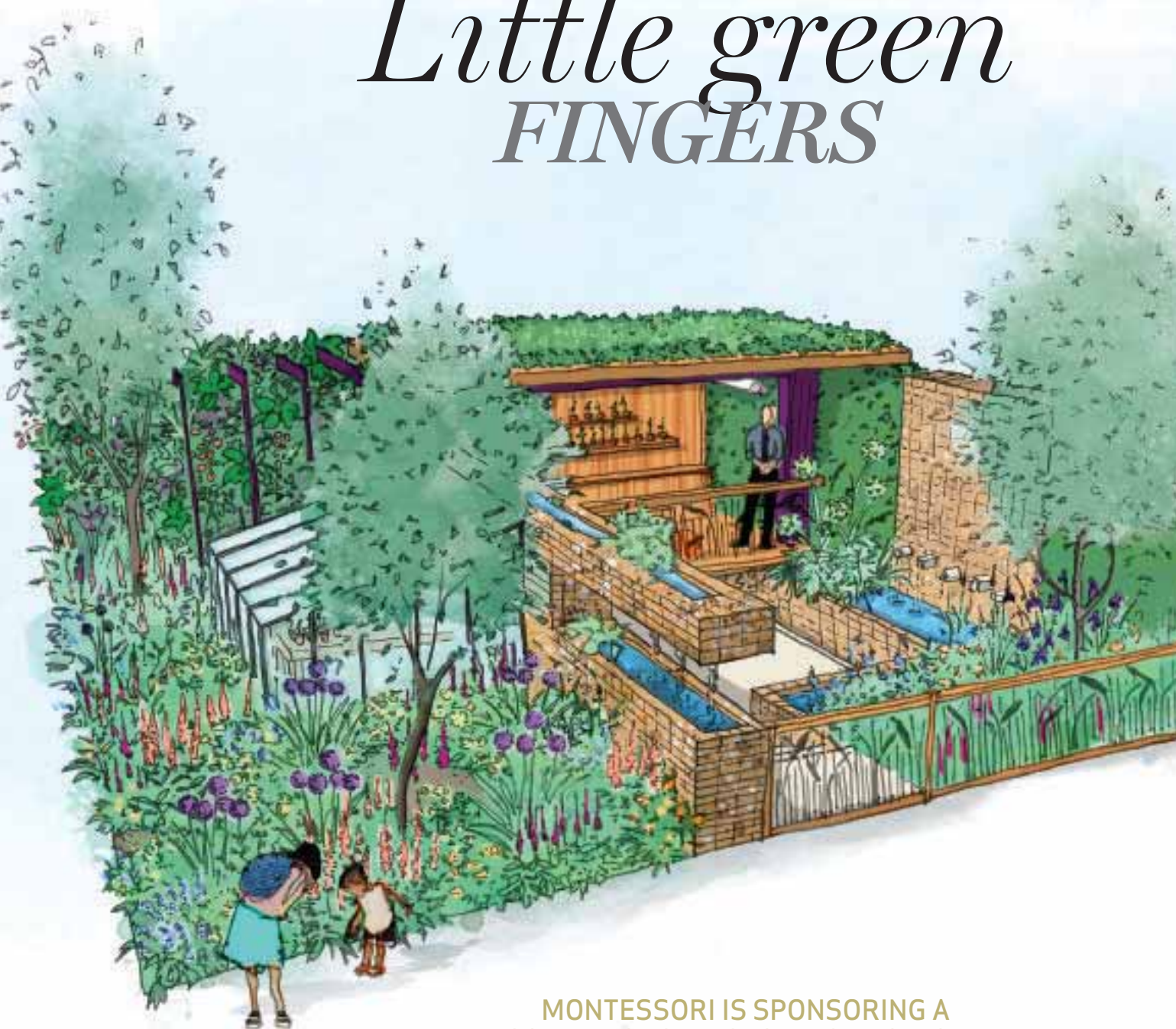
20%

*of Londoners say they
have no close family or
friends to rely on when
they have a problem*

THE
**KENSINGTON
& CHelsea**
FOUNDATION

Improving local lives together

Little green **FINGERS**



Plan for the
Montessori
Centenary Children's
Garden at Chelsea

MONTESSORI IS SPONSORING A GARDEN AT CHELSEA THIS YEAR, AND WE COULDN'T BE MORE EXCITED. PROMOTING GARDENING AS HEALTHY AND FUN FOR CHILDREN, IT'S SURE TO BE A HIGHLIGHT. CHARLOTTE PASHA TALKS TO THE INDIVIDUALS BEHIND IT



“OUR STARTING POINT
WAS TO NOTE THE WELL-
DOCUMENTED FACT THAT
CHILDREN TODAY ARE
SPENDING LESS TIME
OUTDOORS”



THE CHELSEA FLOWER SHOW is one of the most exciting times of the year for the neighbourhood, with locals, visitors and tourists coming out in full force to ooh and ahh at its beautiful show gardens.

This year's Montessori Centenary Children's Garden is sponsored by Montessori and designed by first-time Chelsea designer Jody Lidgard. In keeping with the hands-on, multi-sensory approach to teaching that Maria Montessori first brought to the UK 100 years ago, the focus is on helping children discover and explore.

“Our starting point was to note the well-documented fact that children today are spending less time outdoors – whether that is in parks, gardens, the countryside or at the coast,” says Barbara Isaacs, Montessori global ambassador. “Respect for the environment is therefore more topical than it was a hundred years ago.”

And a garden can teach a lot; not just about plants, but also positive behavioural traits such as responsibility, health and patience. The design incorporates a sunken greenhouse using hydroponic and aeroponic technology to grow edible micro leaves. “With this, we hope to showcase the idea of growing in small spaces – as well as reflecting the serious future concern that with a finite amount of land, we've got to be creative with the spaces in which we



Right: Montessori
garden layout
Left: Garden inspiration

grow,” says Barbara. Children can grow micro vegetables and leaves, while sweet peas and dahlias add splashes of colour and flowers for them to pick.

“We have incorporated a rainwater harvesting system that captures water from the roof of the container classroom,” says Jody. Overflow is sent into water butts and then dispersed into the garden. “Sustainable urban drainage (SUDS) is super-important to our built-up environments to avoid flash flooding and undue erosion,” Jody says. The idea is it kickstarts a keen interest in gardens, from planting to caring, sparking a lifelong green-fingered relationship. “Our ‘pick, snip, tear and taste’ edible living wall with tumbling sweet tomatoes and basil offers an opportunity for the children to really connect with their food,” Barbara adds.

Jody worked with children at local Montessori nurseries to grow some of the plants that will feature in the garden, but



Above: Barbara Isaacs
Below: Jody Lidgard



it wasn’t without its challenges. “The space is ten metres by ten metres,” Jody says, meaning both aesthetics and practicality were key concerns. The result, however, is wonderful: visually beautiful, functional and conveying a larger message. That it will be on display soon is exciting for all involved.

“The Chelsea Flower Show is the greatest horticultural event in the world. Millions of people enjoy the spectacle around the world and it’s a real honour to be a part of the amazing event,” Jody says. “I want people to remember the times they spent with their parents and grandparents as children outside, mixing perfume from petals and flower heads, splashing in water or simply sitting in a flower-filled space watching the world go by.”

It sounds whimsical and magical, and we can’t wait to see it in the flesh.

The RHS Chelsea Flower Show, May 21-25, The Royal Hospital

PROMOTION



Your Smile Designers at Sloane Square

ADVANCED DENTAL TREATMENTS HELPING
TO DESIGN SMILES IN CHELSEA

Dr Roksolana and Dr Yevhen, a brother and sister team of second generation dentists opened their first paediatric dental clinic, Happy Kids Dental, in Marylebone in 2017. Following the success of this multi-award winning clinic they are now bringing their expertise to Chelsea where they are opening a new clinic at 18 Cadogan Gardens. The clinic will comprise of a new branch of Happy Kids Dental together with a brand new adult dentistry clinic called American Smile.

American Smile a boutique destination clinic is also at the forefront of dental innovation, and its passionate team offers advanced dental services to its clients in a stylish and modern environment.

Happy Kids Dental offers a wide range of innovative dental treatments for children, from routine maintenance, to orthodontics, and also offers educational programs such as the Toothbrushing Academy.

Dr Roksolana says "Our favourite thing about the area is the sense of community spirit across the neighbourhood. Our team will do everything they can to live up to the expectations of the Chelsea community and deliver the best dental care locals can expect from a dental clinic. Promotion of a healthy lifestyle and teeth health is at the heart of what we do. Above all we want the local Chelsea community to walk out with a smile they are happy with".

To book your initial consultation at American Smile and receive an exclusive new opening offer of 25% discount please call 020 3973 9266 quoting 'Sloane Square magazine'. Terms and conditions apply.

18 Cadogan Gardens - SW3 2RP

www.happykidsdental.co.uk www.americansmile.co.uk



AMERICAN
SMILE
SLOANE SQUARE

SLOANE SQUARE / MAY 2019



PETER THOMAS ROTH'S Hungarian Thermal Water Mineral-Rich Moisturizer is chock-full of minerals found in Hungarian thermal springs. If you want firmer, younger-looking skin, not to mention the reduced appearance of fine lines (and who wouldn't want all of that?), this is the moisturiser for you.

£44, Harvey Nichols, 109–125 Knightsbridge

CELEBRATE THE RHS Chelsea Flower Show with famed hairdresser Limoz Logli's Chelsea in Bloom package (£65). Book in for a manicure and blow-dry to receive a complimentary botanical cocktail, containing hibiscus syrup, rose water and prosecco – you'll have fun while looking fabulous. The salon is also taking part in Chelsea in Bloom, so be sure to take photos. *Until May 25, 78a Chelsea Manor Street*



MALAYSIAN DAY SPA Ushvani has launched a new vegan-friendly Lemon Tea Tree Handwash. It's packed with essential oils and smells delicious. Bring the spa vibe home. £25, 1 Cadogan Gardens



boutique fitness
London • Milan

No subscription, pay as you go • discounted volume passes
fast tracked results • ultimate custom workouts
fat-busting sequences



High energy Dynamic Pilates • Reformer • Barre • Personal training
Sculpt, lengthen, tone and strengthen in just 55 minutes



**INTRO
OFFER**

QUOTING **SSM38**
1 SESSION FOR **£10**
OR 10 DAYS FOR **£60**

Unlock the best YOU with
Lasting body changes
Leaner, longer muscles
Flatter chiselled abs
Stronger core, better posture

Open 7 days a week
1A Ives Street SW32ND
T. 020 7584 2822
info@vita-london.com
www.vita-london.com



VANISH SEAMLESS Finish Liquid Foundation is a new launch by cult favourite Hourglass. Available in a whopping 32 shades and offering full coverage, the formula is vegan and weightless, feeling like a second skin. It's also waterproof, sweat-proof and lasts all day. £48, Space NK, 27 Duke of York Square

RUUBY, the on-demand beauty-services platform founded by local girl Venetia Archer has recently launched its elite Black Label membership. It gives you access to 24-hour beauty services, new treatments not available on the existing RUUBY app and priority bookings on all therapies. That perfect mani, blow-dry or spray tan has never been easier to achieve. £450 per year, [ruuby.com](https://www.ruuby.com)



SARAH CHAPMAN'S new facial steamer should become part of your skincare regime. Use it to begin your at-home facials – it helps open pores so they become more receptive to extractions, thereby keeping skin clean. Steam also supplements moisture levels, which is good news for wrinkles. £119, 259 Pavilion Road



JOIN mayfairPA

Mayfair PA is a group of dedicated professionals who enjoy bespoke monthly events in and around Mayfair with the chance to experience luxury boutiques, fine dining restaurants, hotels and business services - all looking to showcase the best they can offer to Personal or Executive Assistants.

As a key influencer in your organisation, these evenings are wonderful opportunities to engage with premium brands that will be on your company's radar going forward. Always varied and fun, Mayfair PA is here to point you in the right direction, whatever your company's needs.

Joining Mayfair PA and attending its events are free of charge. To receive regular email event invitations, we do require your name, the company you represent and your work email address for this.

Please contact
MayfairPA@pubbiz.com
to express your interest.



Beauty / Summer hair

SLOANE SQUARE / MAY 2019

GOING LIGHTER FOR SUMMER IS SOMETHING MANY OF US ARE AFTER. SO FOR THOSE WHO WANT PERFECT SUN-KISSED BEACHY WAVES TO COMPLEMENT A TAN, CHARLOTTE PASHA ASKS THE EXPERTS HOW TO GET THE LOOK

SUMMER loving

LIM02 LOGLI



RICHARD WARD

AS WITH MOST beauty treatments, condition is key. Head to superstar colourist Hannah Gaboardi at Salon Sloane (186 Pavilion Road) and ask for her hair-filler treatment, to get your locks looking shiny. A concoction of various strengthening and conditioning treatments, it's the perfect way to make colour look glossy. Now that's taken care of, it's on to the fun bit: the colour itself. Try Hannah's sombre technique (from £225). "Sombre is a softer version of ombre; a middle ground between ombre and balayage," she says, referring to two popular techniques. "The appearance of dark roots is less harsh, with baby lights starting from the roots and becoming stronger towards the ends," Hannah says. She will help you pick the perfect hair colour for your skin tone, before achieving it in a finessed process. "The key to achieving sombre is to use more colours, taking the

Beauty / Summer hair

darker hue from the roots and subtly weaving through the ends with tiny baby lights,” she says. And don’t worry, brunettes can join in the fun. “It’s especially ideal for brunettes adding honey and caramel tones,” Hannah says.

You could also go to see Limoz Logli at his eponymous salon (78a Chelsea Manor Street) – the famed colourist has honed his technique over years. “The Limoz Signature Colour (from £450) is a subtle, lasting way of lightening your hair. It is done so precisely and delicately that there are no obvious transitions. I work on a full head of baby lights – super-fine strands of blonde to faintly lift the whole hair. Then I begin lightening the hair around the face and creating more depth by hand-painting blonde strands strategically. Once I am happy with the lightness and tone of the blonde, I smudge gloss from the root to create a melt of the natural root colour,” Limoz says.

Michael Charalambous at Nyumba (1 Sloane Square), meanwhile, has plenty of advice for those looking to lighten up. “Naturally in summer, hair gets lighter and skin gets darker, so by introducing different colouring techniques with low-peroxide products, one can achieve a very successful sexy summer look.” Head colour specialist Giulia Zuccaroli will personalise your colour for the best possible results, while various treatments to maintain post-colour hair health are available. “We use Olaplex, Leonor Greyl, Kérastase vitamin shots and bespoke hair treatments,” says Michael. “Your colourist will advise you on the right aftercare product to take home.”



LIMOZ LOGLI

“IT’S ESPECIALLY IDEAL FOR
BRUNETTES ADDING HONEY AND
CAMEL TONES”

Once you’ve got the perfect colour, you’ll want to get the bouncy blow-dry – and the talented team at Richard Ward (82 Duke of York Square) know exactly how to get summer waves. “Beach waves are deliberately messy,” stylist Zacharie tells me, “and generally a centre parting is used.” He goes on, “Blow-dry the hair, but just to smooth the cuticle; not so that the hair drops. Then, use a conical wand to curl it – the curls will stay longer that way.” Zacharie also recommends investing in a heat glove (he likes Cloud Nine), enabling you to really grip the wand. And the products you use, he says, are important – you want them to be dry, in order to add texture.

Finally, going lighter for the summer coincides with Ascot – which means hats. To style your hair perfectly with a hat, keep hair simple so it doesn’t detract. “You could tie your hair in a low bun,” says hairdresser Hakan Köse, founder of HK LONDON (311 King’s Road). “If you want to accentuate both the hat and the hair, a low ponytail tied gently to one side can create a very interesting yet understated look.”

They say blondes have more fun, so whatever your shade, let this be your best hair season yet.



SALON SLOANE

Look who's sharing our secret?



"Selfless devotion to wellbeing...
A temple of peace and pampering of
the highest order" *The Sunday Times*



This serene day spa in the heart
of Chelsea is the perfect place
to decompressyou'll feel the
benefits for weeks afterwards – and
leave counting the days until your next
appointment" *Vogue.co.uk*



"The tranquil, secluded surroundings of the
award-winning Malaysian-inspired Ushvani
spa are home to some of the capital's best
therapies" *London Evening Standard*



"Ushvani is a Chelsea hideaway
that rivals the exoticism of spas
in Asia" *Tatler Spa Guide*



"The benefits of having independent
status means Ushvani bears all the
hallmarks of a one-of-a-kind
establishment that Londoners are so
hungry for today" *European Spa*

The best day spa in London is right here in the heart of Chelsea

Treatments | Hydrotherapy Pool | Yoga | Workshops | Couples Suite | Tea Room | Relaxation Room | Skincare Products



Ushvani Spa | 1 Cadogan Gardens | London SW3 2RJ | Reservations: 020 7730 2888
reservations@ushvani.com | www.ushvani.com



of the best



Under the Sea isn't just the theme of this year's Chelsea in Bloom – it's also our theme when it comes to clothes, beauty products and interiors

RAG & BONE
Chelsea in Bloom
Tee, £95
(only available
May 20–27),
13–14 Sloane Square



PETER JONES
Emma Bridgewater
lobster platter, £115,
Sloane Square

PETER JONES
Elemis Ultra Smart
Pro-Collagen Serum,
£210, Sloane Square



Under the Sea / Top 10

SLOANE SQUARE / MAY 2019

THE ORGANIC
PHARMACY

Purifying Seaweed
Clay Mask, £37.95,
396 King's Road



5



TIMOTHY OULTON

Crab painting,
£850, Bluebird,
350 King's Road

OLIVIA VON HALLE

Eye Mask Cody, £150,
190 Pavilion Road



6

4



8

ANDREW MARTIN

Cushion, £65,
190-196 Walton Street



7

PETER JONES
Prestat Sea Salt
Caramel Truffles,
£14, Sloane
Square

HARVEY NICHOLS
La Prairie Skin Caviar
Luxe Cream, £384,
109-125 Knightsbridge



9



10

ANNOUSHKA
Mythology Crab locket,
£8,900,
41 Cadogan Gardens



“I was seeking a garden, I dreamed of a garden, but I did not know where it was.

One day I read a wonderful text about a garden in Venice that had been planted on the lagoon, and had inspired the dreams of generations of artists. Of course I wanted to visit, but I discovered that it was completely inaccessible and impenetrable. It was much discussed, but no-one had seen it and nature had completely regained its rights.

Eventually I wrote to the Hundertwasser Foundation, and the president gave me an appointment in Vienna. Even though he receives hundreds of letters every month, I think that mine had touched him.

In January 2017 I was finally able to push open the secret door and immediately I was struck with emotion. With each of my visits, I enjoyed different olfactory experiences. For example, in April I experienced pittosporums, small trees whose branches plunge into the lagoon, covered with thousands of tiny white and yellow flowers. They have a bewitching scent between the orange blossom and the jasmine.

In June I was touched by the fresh and delicate smell of magnolia. These magnificent white flowers are perched so high in the trees you have to lift your nose to smell them. It's as if the smell came from the sky.

However, when it came to creating the fragrance,



CHRISTINE NAGEL,
HERMÈS PERFUMER,
TALKS TO CALLY
SQUIRES ABOUT THE
INSPIRATION BEHIND
THE BRAND'S NEWEST
UN JARDIN SCENT

the grandiflora alba extract didn't match the magnolia smell I wanted to express, so I asked for a particular extract, made exclusively for our house – an extract from champaca. It's that ingredient that gave me the soul supplement I was looking for.

The bottle is our iconic lantern, created in 1951, and inspired by horse-drawn carriages of yesteryear. And the cap is shaped like a bowler hat.

To create this fragrance was to give this garden another life, an olfactory reality, and to enable everyone to imagine and dream of this garden. To enable everyone to open the gate and discover this secret oasis.”

*Un Jardin sur la Lagune, £89, from Hermès,
1 Cadogan Place*

SLOANE SQUARE / MAY 2019



Jared Eagland

The general manager at new eatery the Physic Garden Café on its 'plants-to-plate' approach and more

WE MERGE FOOD and horticulture in a green oasis within the city, offering a relaxed dining environment with fresh, locally sourced seasonal food. We use some of the rare ingredients grown in the garden and really want to bring 'plants to the plate'. It is wonderful to enjoy this within the walls of the oldest botanic garden in the capital.

ROCKET & RADISH, the company I work for, operates several other

cafés within nurseries. Seeing this project from start to finish has been so exciting. The USP is our location – on the banks of the Thames, in the heart of this beautiful city, yet in a tranquil green space. We believe that simple, fresh food done well is hard to come by these days, and we pride ourselves on the quality of our ingredients and our menus.

WE ARE REALLY looking forward to being in and among the Chelsea

Flower Show for the first time, one of the most important events in the calendar for London. We will be offering fresh daily changing specials replicating the theme of the Flower Show (this year Under the Sea) and also a grab-and-go hamper offer for those wishing to enjoy their food within the gardens.

BRUNCH IS THE MAIN EVENT these days – it is becoming increasingly popular for a weekend

9 to 5



meal out with friends and family. A personal favourite would have to be our Vegetarian – smashed avocado, mushrooms, tomato, grilled halloumi and poached eggs on toasted sourdough! Simple and classic, but so good.

I AM CONSTANTLY inspired by all aspects of the industry – I enjoy nothing more on a day off than sampling the array of restaurants in London's booming food scene.

Managing a restaurant in London is extremely rewarding, and although it is hard work, no day is ever the same and there is no job like it. I believe hospitality should be more recognised as an extremely skilled profession. It certainly takes passion for you to make it in this competitive world.

WE ARE LUCKY ENOUGH to be able to use some of the plants from the garden in our dishes. If we can't, due to

the quantity available or them being a protected plant, we still base our ingredients and flavours on what is right on our doorstep. Our fish is delivered to us daily from Billingsgate Market and all of our meat is from a great-quality butcher in Fulham. We source all of our products as ethically and locally as possible, and everything is fresh.

WE HAVE A BROAD demographic, from tourists visiting the

garden for the first time to friends of the garden who we see on a regular basis. We also get to meet lots of guests through the events that we hold year round. It is so lovely to have that mix of regulars who we can get to know well, but also lots of new faces every day. It is year one for us, so there are lots of interesting things in the pipeline – watch this space!

*The Physic Garden Café,
Chelsea Physic Garden,
66 Royal Hospital Road*



Borough best friend

SUSAN DOLTON IS THE DIRECTOR
OF THE KENSINGTON & CHELSEA
FOUNDATION, WORKING TO HELP
COMBAT INEQUALITY IN THE BOROUGH

“KENSINGTON AND CHELSEA is a fantastic place. What drew me to this borough was its diversity and the fact that it’s so vibrant. I was also aware of the huge inequalities that exist locally and I admired the values of the K&C Foundation and its role to bring people, businesses, schools and charities in our borough together to build a better place for everyone.

We believe no one should be held back by lack of opportunity. Since 2008, we’ve shone a light on issues that impact local people and we’ve raised more than £5 million to tackle them. We are uniquely placed to bring people together, be they individuals, schools or businesses, and to ensure that money, skills and other resources are directed to

People / Local hero

SLOANE SQUARE / MAY 2019

the excellent local charities and community partners who work tirelessly and with great expertise to support people in K&C.

We were one of the three key fundraisers for the Grenfell Tower tragedy and it was a privilege for our very small team to work to raise over £7 million to support the survivors, the bereaved and the wider affected community. Being local, we were able to work quietly and effectively with other local charities to help people at a truly dreadful time. Looking to the future, we are continuing to work side by side with the community in North Kensington, while also working closely with local people, businesses and charities in the south of the borough.

A lot of my time is spent getting to know people, whether that's a business in Sloane Square, a charity in Earls Court or a local museum. Listening is a big part of my job and that's how my organisation continues to learn and evolve. We are there to respond to the community and to take on board what we hear and react to it positively. That's the beauty of being local.

The best bit about my job is the variety. Every day is different and I get to meet some amazing, inspirational people of all ages and



K&C FUNDRAISING FOR THE FOUNDATION IN DUKE OF YORK SQUARE

LISTENING IS A BIG PART OF MY JOB AND THAT'S HOW MY ORGANISATION CONTINUES TO LEARN AND EVOLVE



from all walks of life. I spend a lot of time on local buses and one of my favourite things to do is to get on the 452 at Ladbrooke Grove and take it all the way to Sloane Square. Mainly, this is for work purposes, but I'm often tempted into Peter Jones and the shops on Duke of York Square.

We've spent a lot of time recently listening to people and also looking at data and evidence about local needs. This has informed our current priorities, which are helping people with skill building and employment, combatting some of the issues faced by our young people and supporting those suffering from isolation and loneliness. Whether you're a local resident, business or school, there are so many ways you can get involved. We'd love you to join our growing family of supporters and friends."

team@thekandefoundation.com



Raymond Blanc and Steven Kerr



Gary Jones and Adam Handling

Master chefs

RESTAURANT OPENING

ADAM HANDLING

There was much excitement in the air for the official opening of Adam Handling's new self-named restaurant at the Belmond Cadogan hotel. Fellow chefs such as Raymond Blanc, Pierre Koffmann and Russell Norman headed to Sloane Street for a night of champagne and canapés to toast the launch.



Shy FX (right)



Gary Jones (left of Pierre), Pierre Koffmann (middle) and Will Torrent (right of Pierre)



Gayle Rinkoff, Gaby Roslin, Tabitha Webb, Rosie Nixon and Tamsyn Spires



Trinny Woodall



Charlotte Spencer and Jack Fox

ESSENTIEL ANTWERP LAUNCH

SLOANE SQUARE

Fashionistas including Jodie Kidd, Trinny Woodall and Jo Elvin joined celebrities like Gaby Roslin and Jenni Falconer for the opening party of Essentiel Antwerp's first UK boutique. With some unexpected spring sunshine, many were wearing colourful designs from the Belgian brand's SS19 collection.



Olaf Hernandez, Yetti Smith and Nadine Leopold



Amy Williams, Jo Elvin and Emily Dawes

My Chelsea / Sue Biggs

SLOANE SQUARE / MAY 2019

SUE BIGGS,
DIRECTOR
GENERAL OF
THE ROYAL
HORTICULTURAL
SOCIETY (RHS)

FAVOURITE ELEMENTS OF THE CHELSEA FLOWER SHOW?

I love the Great Pavilion, the sights and smells are incredible. The amazing nursery growers put on the best horticulture displays in the world. The shopping opportunities are brilliant and I always buy myself a treat every year to remind me of each show. I love the build-up and buzz and, of course, I'm extremely honoured that I show HM The Queen around Chelsea.

WHY CHELSEA?

The Royal Hospital is a really special place. It's steeped in history and the Chelsea Pensioners with their cheery red coats and wicked sense of humour are such an iconic and lovely sight. Chelsea and the King's Road are great, too, with all their shops and restaurants.

CHELSEA IN BLOOM HIGHLIGHT LAST YEAR?

The winning Best Floral

Right: The M&G Garden plan
Photo: Andy Sturgeon



Display by Monica Vinader was spectacular. I love Chelsea in Bloom; the displays in the shops and local businesses are always wonderful.

WHAT DO YOU WISH MORE PEOPLE KNEW?

The RHS is a charity and I'd like people to know more about our community outreach work. We

have great people bringing horticulture and gardening into communities with literally life-transforming results. Then there's our schools campaign and scientific research into the environment, health and climate change.

LOCAL HAUNTS?

I am a huge fan of Italian food, so Manicomio in Duke of York Square

gets my vote, and Peter Jones is such an amazing institution.

WHAT CAN WE EXPECT FROM THIS YEAR'S FLOWER SHOW?

Eight nurseries are making their Chelsea debut this year, and for the first time a National Allium Collection will be on display, demonstrating the diverse size, colour and shape of these popular plants. Iconic Gold-medal-winning rose breeder David Austin Roses will be celebrating its 50th anniversary at the show with a sensual display of award-winning roses, and we are honoured that our very own RHS Back to Nature Garden is being co-designed by the Duchess of Cambridge and landscape architects David White.

rhs.org.uk





RECEIVE
£20
OFF
our skin treatments*

Quote the code below to redeem:

DERMALOGICA20

To book visit flagship.dermalogica.co.uk or
call our Duke of York store on 0207 730 5937.

dermalogica®

*Dermalogica reserves the right to amend or change this offer at any time. This offer cannot be used in conjunction with any other offer or promotion. Offer valid on all Dermalogica skin treatments except SkinBooster®. Limited to one use per customer. Valid until 31st August 2015 at Dermalogica Duke of York only, for cash alternative or substitute available. Quote DERMALOGICA20 to redeem.



CHELSEA
HEALTH CLUB & SPA



MY ME TIME

AT LONDON'S PREMIER HEALTH CLUB

Enjoy our 25m ozone-treated pool
and a new health club experience.

Receive a free spa treatment and PT session
when you quote 'Sloane Square Magazine' on joining.

chelseahealthclub.com/sloane