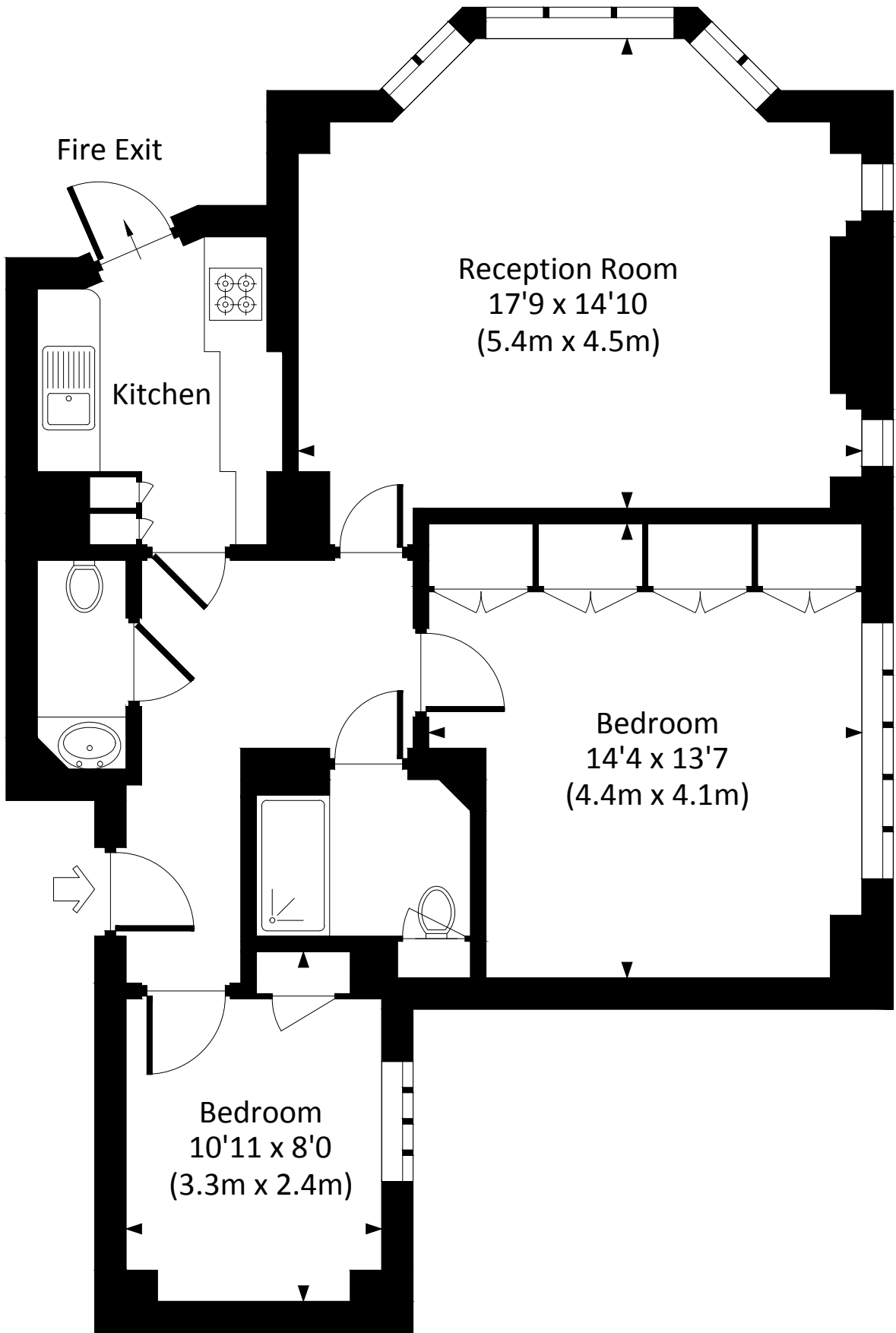
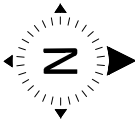


SLOANE STREET, SW1X

Approx. gross internal area  
751 Sq Ft. / 69.8 Sq M.



FIRST FLOOR



All measurements have been made in accordance with RICS code of Measuring Practice which are approximate only and only for illustrative purposes. For the avoidance of doubt, Dowling Jones Design shall not be liable for any reliance on these measurements. © 2018 [www.dowlingjones.com](http://www.dowlingjones.com) 020 7610 9933