

# SLOANE SQUAR

ART \ CULTURE \

NOVEMBER

## *FACE THE MUSIC*

GET READY FOR THE  
LONDON JAZZ FESTIVAL

*Gift guide*

PERFECT PRESENTS  
MADE EASY

*'Tis the season*

SKATING, SHOPPING  
AND FESTIVE FEASTS

*Lend a hand*

THE LOCAL CHARITIES  
THAT NEED YOUR HELP

My Life in Seven Charms - a selection of 18ct Gold Charms



**London**

Cadogan Gardens Studio



@annoushkajewellery



02078815829

**annoushka.com**

*Annoushka*



# Contents / November-December 2021

## 6 CALENDAR

Essential events for your diary in November and December

## 14 NEWS

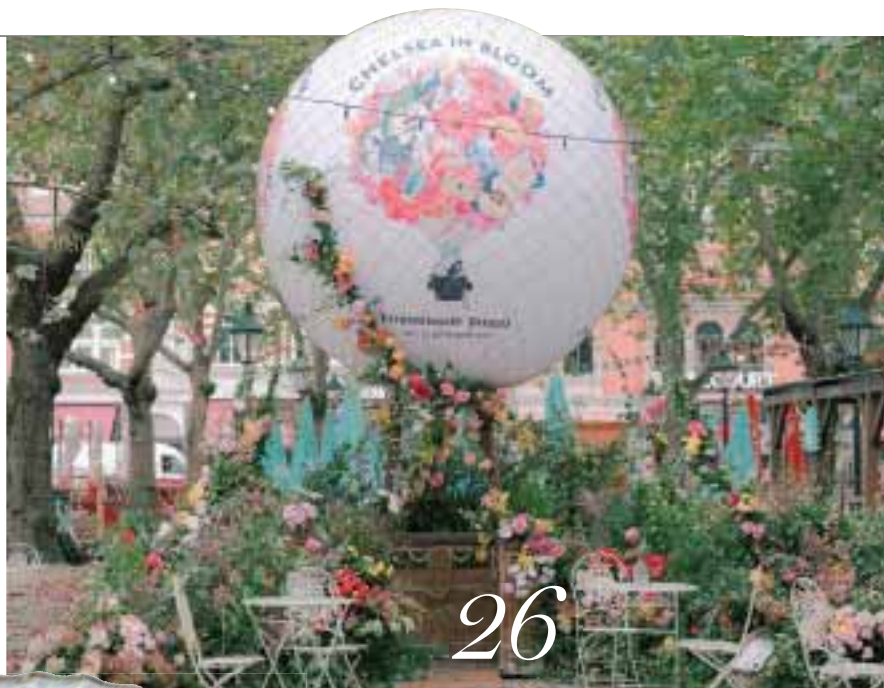
Keeping you in the know about what's going on in Chelsea

## 21 ART NEWS

All the must-see exhibitions

## 24 ART

How the Saatchi Gallery gives back



26

## 26 CHELSEA IN BLOOM

Celebrating Chelsea's floral extravaganza

## 30 HISTORY

Behind the scenes with cinematic Chelsea

## 35 FOOD NEWS

Brand new openings and a disco brunch

## 38 FOOD

The return of Sloane Street Deli

## 40 FOOD MEMORIES

Local foodies share their feasts of Christmas past

## 44 SHOPPING

Source your Christmas food locally, from cheese to mince pies

## 48 INTERIORS

Learn the secrets of tablescaping from Lay London

## 50 SUSTAINABILITY

Explore Pont Street's urban forest

35



## COVER

Lakecia Benjamin, just one of the many world-class jazz acts appearing at the London Jazz Festival.

Image © Elizabeth Leitzell

Page 7



74





# Chelsea Physic Garden Christmas Fair

Thursday 25 - Sunday 28 November

Tickets £7: book online at  
[chelseaphysicgarden.co.uk](http://chelseaphysicgarden.co.uk)

66 Royal Hospital Road, London, SW3 4HS



## 52 GIFT GUIDE

Your Christmas shopping - wrapped

## 59 FASHION NEWS

Sustainable cashmere and recyclable T-shirts

## 62 FASHION

Johnnie Boden on the British brand's 30th birthday



## 64 JEWELLERY

Annoushka Ducas and Alice Temperley on their bridal jewellery collection

## 66 LOCAL HERO

Give where you live with these local charities

## 68 AWARDS

Nominate your local heroes

## 72 CHARITY

Introducing the winter warmth campaign

## 74 CULTURE

The most expensive music ever made is recorded at Cadogan Hall

## 76 CULTURE

Meet conductor Harry Christophers

## 78 BEAUTY NEWS

Get the Sloane Shag

## 82 MY CHELSEA

Jake Greenall of the Beaverbrook Townhouse



### SLOANE SQUARE

is produced for Cadogan by

#### Publishing Business

3 Princes Street  
London W1B 2LD  
020 7259 1050

#### Cadogan

10 Duke of York Square  
London SW3 4LY  
cadogan.co.uk

#### Editor

Alice Cairns  
020 7259 1058  
alice@pubbiz.com

#### Deputy editor

Charlotte Pasha  
020 7259 1054  
charlotte@pubbiz.com

#### Writers

Sophia Charalambous,  
Daniel Pembury

#### Sub editor

Selma Day  
020 7259 1052  
selma@pubbiz.com

#### Designer

Andy Lowe

#### Advertisements

Bridget Rodricks  
020 7259 1059  
bridget@pubbiz.com

#### Richard Taylor

07423 099 277  
richard@pubbiz.com

#### Publisher

Adrian Day  
020 7259 1053  
adrian@pubbiz.com



This product is made of material from well-managed FSC®-certified forests and from recycled materials.

All inks vegetable based. Our printers are certified to ISO 14001 Environmental Management.

This magazine is fully recyclable, when you have finished reading it please put it in your paper recycling bin.



Publishing Business is a member of the Professional Publishers Association and observes the PPA Code of Publishing Practice.



@SloaneSquareMag  
@DOYSQ  
@SloaneStreetSW1  
@Pavilion\_road



@SloaneStreetSW1  
@PavilionRoad  
@dukeofyorksquare  
@SloaneSquareMag  
@Kingsroad.london

# Calendar

## FROM NOVEMBER 17

### ANCIENT GREEKS: SCIENCE AND WISDOM

This free exhibition explores the ways in which the Ancient Greeks interpreted the natural world. Using objects and artworks including globes, sundials, headdresses and medical instruments, the exhibition draws parallels between Ancient Greek thinkers and modern-day scientists.

**Science Museum, Exhibition Road;**  
[sciencemuseum.org.uk](http://sciencemuseum.org.uk)



## DECEMBER 22

### KEALA SETTLE IN CONCERT

You may recognise Keala Settle as the breakout star of *The Greatest Showman*. Her soulful performance of 'This Is Me' broke records by staying at No. 1 in the UK charts for 28 weeks running. For one night only, she'll be performing live at Cadogan Hall, with a personal repertoire of songs that have helped her heal in times of crisis.

**Tickets from £25; Cadogan Hall,**  
**5 Sloane Terrace;**  
[cadoganhall.com](http://cadoganhall.com)



## UNTIL JANUARY 16

### NATURAL HISTORY MUSEUM ICE RINK

Don't miss the last ever ice rink at the Natural History Museum. After 16 incredible years, the rink's iconic location will be repurposed in an urban wildlife habitat. All the more reason then for you to get your skates on, wrap up warm and enjoy the final year of this twinkling, frosty Christmas treat – preferably with a glass of mulled wine in hand.

**The Natural History Museum,**  
**Cromwell Road; [nhm.ac.uk](http://nhm.ac.uk)**





## NOVEMBER 12-21

### LONDON JAZZ FESTIVAL

The London Jazz Festival is back with a bang. After 2020 saw the festival staged digitally, jazz enthusiasts will be longing to get back to the joy of live performance. Cadogan Hall is the venue for many of the world-class jazz acts on the festival's 2021 line-up: don't miss the likes of saxophonist Lakecia Benjamin, Grammy-winning jazz singer Dianne Reeves, and Indonesian jazz pianist Joey Alexander.

[efglondonjazzfestival.org.uk](http://efglondonjazzfestival.org.uk)

# Events diary

NOVEMBER  
& DECEMBER

## NOVEMBER 19

### THE RESTART SLEEPOUT

Homelessness charity RESTART is holding its annual sleepout outside St Columba's Church in Knightsbridge. The aim is to raise £75,000 to support rough sleepers as they restart their lives. Visit the website to register.

**St Columba's Church,  
Pont Street  
[restartlives.org](http://restartlives.org)**

## DECEMBER 13-17

### PAINT POTS FESTIVE FUN

This fun-packed week of festive activities at St Mary The Boltons is perfect for children from 12 months to two and a half years. Little ones can enjoy sensory play and music, while older children can get crafty by making homemade decorations, presents and wrapping paper.

**8 The Boltons; [paint-pots.co.uk](http://paint-pots.co.uk)**





## DECEMBER 1

### PLACE 2 BE CHRISTMAS CAROL CONCERT

This uplifting carol concert takes place at Holy Trinity Church, with livestream tickets available too. Expect lashings of live music, festive fun and celebrity readings, with proceeds going to support children's mental health services in schools.

6.30pm, Holy Trinity Church, Sloane Street, [place2be.org.uk](http://place2be.org.uk)

## DECEMBER 23 & 24

### CAROLS BY CANDLELIGHT

Enjoy an evening of carols and seasonal classics performed by the Mozart Festival Orchestra and Chorus. This most festive of celebrations comes with a twist: the performers will be dressed entirely in 18th-century costume, and the hall will be illuminated in flickering candlelight. Alongside the music, actor Peter Davison will give festive readings.

Tickets from £27.50; Cadogan Hall, 5 Sloane Terrace; [cadoganhall.com](http://cadoganhall.com)

## DECEMBER 24

### CHRISTINGLE AND NATIVITY SERVICE

This service at St Simon Zelotes Church is the perfect way for young ones to celebrate the Christmas story. Children are encouraged to come along in nativity costume to re-enact the story of Jesus' birth, with the help of a real donkey, a live baby and plenty of Christmas carols. Every child will take home a 'christingle' – an orange studded with sweets. 5pm; St Simon Zelotes, 34 Milner Street; [stsimonzelotes.com](http://stsimonzelotes.com)

GET INTO THE  
FESTIVE SPIRIT  
WITH THREE  
UNMISSABLE  
CAROL  
CONCERTS

## *A Christmas Carol*





# CASSANDRA GOAD



BEAUMAR-  
CHAI  
FIGARO

Gold chain  
necklace or  
bracelet from  
a journey to  
Italy

[cassandrագoad.com](http://cassandrագoad.com)



## NOVEMBER 21 & 28 FESTIVE FLORAL MASTERCLASS

Join Neill Strain Floral Couture for a festive floral workshop at Harrods. You'll learn how to arrange flowers and greenery to create gorgeous seasonal displays – the perfect way to get your home Christmas-ready.

**Harrods, 87-135,  
Brompton Road;  
neillstrain.com**

## NOVEMBER 30

### CHRISTMAS COCKTAIL FAIR

Opera Prelude supports rising stars in the opera world, working with the Garrison Chapel in the Chelsea Barracks to stage masterclasses and showcases. To raise funds, the charity is holding a 'Christmas Cocktail Fair' at Clementi House in Kensington. Shoppers will be able to browse a selection of gifts, while being serenaded by operatic superstars of the future.

**operaprelude.org**

## NOVEMBER 10-DECEMBER 18

### RARE EARTH METTLE

Al Smith began his creative career at the Royal Court Writer's Group, and recently received a nomination for 'Most Promising Playwright' at the Evening Standard Theatre Awards.

Now he's back with Rare Earth Mettle, a new work which explores ambition, nature and indigenous communities, played out on a Bolivian salt flat.

**Tickets from £12;  
Royal Court Theatre;  
royalcourttheatre.com**





## HOMES FOR SALE IN CHELSEA AND KNIGHTSBRIDGE



### CARLYLE MANSIONS, SW3

A magnificent penthouse apartment within a portered Victorian block with incredible views up and down the River Thames.

3 BEDROOMS | 2 BATHROOMS | 2 RECEPTION ROOMS  
LIFT | APPROXIMATELY 2,201 SQ FT | EPC D

Guide price £4,000,000 Share of freehold

Knight Frank Chelsea  
charles.olver@knightfrank.com 020 3813 9302



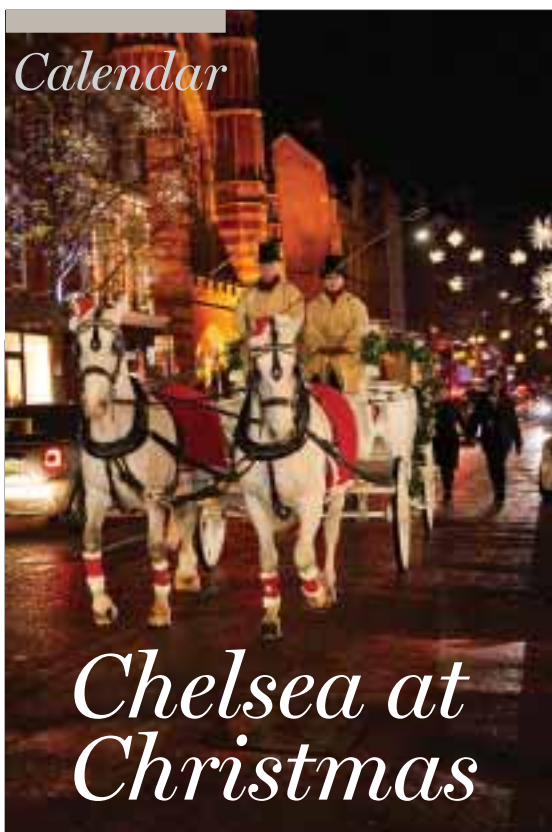
### ORMONDE GATE, SW3

A stunning apartment set on the first floor across two period red brick buildings with beautiful green views over Burton Court in the heart of Chelsea.

3 BEDROOMS | 2 BATHROOMS | 2 RECEPTION ROOMS  
APPROXIMATELY 1,864 SQ FT | EPC D

Guide price £3,150,000 Leasehold

Knight Frank Knightsbridge  
alastair.nicholson@knightfrank.com 020 8033 4108



## *Chelsea at Christmas*



### TWINKLING LIGHTS, WINTER COCKTAILS AND HORSE-DRAWN CARRIAGE RIDES

This December, Chelsea will be transformed into a festive wonderland thanks to its annual Christmas celebrations.

Mark the start of the most magical time of the year with the Chelsea Christmas Light Switch-On, taking place on Saturday November 20. From 2pm, enjoy celebratory performances

on stage as well as roaming entertainment throughout the neighbourhood. You'll also be able to pick up artisanal treats from the festive Fine Food Market at Duke of York Square, and enjoy Christmas cocktails on the Sloane Square Winter Terrace whilst soaking up the atmosphere on the King's Road, part-pedestrianised for the very first time. Father Christmas and a little local hero - a child from the top of the 'nice' list - will be switching on the lights this year, with the unmissable moment taking place at 5pm.

And, to add a little sparkle to your Christmas shopping this year, mark Saturday, December 4 in your diaries for the return of the Chelsea Christmas Shopping Event. Expect a glittering host of neighbourhood offers, promotions, and entertainment for all the



family, including the return of the much-loved complimentary horse and carriage rides.

**Please visit  
[chelseachristmas.co.uk](http://chelseachristmas.co.uk)  
for further information**





# *The Walton Street Stationery Company*

PRIVATE STATIONERS SINCE 1970



SPREAD JOY THIS SEASON WITH LUXURY BESPOKE CHRISTMAS CARDS

# News

LOCAL RESIDENT Fleur Colville has started Mix & Rise, a new business dedicated to helping people to bake plant-based goodies at home. From its offices at The Workary in Chelsea, Mix & Rise creates easy baking kits and monthly subscription boxes full of locally-sourced, vegan ingredients that are delivered in biodegradable packaging. [mixandrise.com](http://mixandrise.com)



THE LOVE MY HUMAN TOWNHOUSE will be holding monthly 'Dog Matters' talks, aiming to equip dog parents with all manner of top canine tips. Experts will guide you through everything from adopting a rescue to becoming a dog influencer. Gardeners will teach you how to plant a dog-friendly garden, an aromatherapist will discuss the best oils for your pet, and there will be lessons in dog fur maintenance. *330 King's Road*

GREG HANDS, the conservative MP for Chelsea and Fulham, has been appointed Minister of State for Energy, Clean Growth and Climate Change in the recent cabinet reshuffle. It's a high-profile appointment that coincides with the UN Climate Change Conference (COP26), which runs from October 31 to November 12.





AMAFFI PERFUME HOUSE has recently relaunched its Sloane Street boutique. Every Amaffi scent is housed in an individually-designed bottle, decorated with gold or silver plating and inset with up to 2,000 Swarovski crystals. With prices starting at £2,400, these fragrances certainly aren't for everyone – but perfume enthusiasts will be delighted to learn that the scents are made with the highest-quality natural ingredients, including rare absolutes like champaca, agarwood and narcissus.

*8 Sloane Street*



THE CADOGAN, A Belmond Hotel has partnered with Pet Pavilion to provide the ultimate dog-friendly hotel experience. Your pup will be picked up by a doggy taxi and whisked away to Pet Pavilion on King's Road, where they'll indulge in pampering spa rituals before being transferred back to the hotel. They can then feast on a carefully curated menu of dog-friendly dishes, delivered to your room by a dedicated butler service, before reclining in the sumptuous bedding. Gift boxes are also available, featuring delicious treats and whimsical toys.

AFTER THE SUCCESS of her pop-up greengrocers, Anya Hindmarch is transforming the Village Hall at 11 Pont Street into a festive wonderland. From November 15 – December 23, children can explore an 'Anya Christmas grotto' complete with moonlit forests and crunchy snowscapes, where Father Christmas can be found reading seasonal stories. At the same time, The Christmas Store will be selling festive gifts and decorations, while the Anya Café will be serving up limited edition treats including mince pies, gingerbread men and Christmas cakes.

11 Pont Street



IMAGE: MARLOES HAARVANS



A PRESTIGIOUS private members' club has opened in Knightsbridge. The Pavilion Club boasts an all-day dining menu from Michelin-starred chef Tom Kerridge, and a third-floor terrace with panoramic views over Hyde Park. The launch night was held in September, and attracted famous faces including Amelia Windsor, Poppy Delevingne and Frank Lampard.

64 Knightsbridge

REEDAH EL-SAIE of Burton Court, Sloane Square, has launched a new educational mobile app. 'Xplorealm's' is a game for 7-14 year-olds which has been developed to support the National Curriculum while fostering critical thinking and digital literacy. Children at Sussex House School in Chelsea and Hill House School in Knightsbridge were the first to experiment with the app, which has now been rolled out to youth centres across the borough.

[xplorealm.com](http://xplorealm.com)





# 11

CADOGAN  
GARDENS

C H E L S E A

## GIVE THE GIFT OF MEMORIES

*For him, for her,  
for them.*

Choose from an array of delightful gift vouchers from overnight stays in one of our sumptuous suites, to a delicious dining experience at Hans' Bar & Grill, or gift someone an indulgent evening of cocktails in the Chelsea Bar.

LONDON | SW3 2RJ

020 7730 7000

11CADOGANGARDENS.COM

@11cadogangardens.com @hansbarandgrill





AN OVERWHELMING majority of businesses on the Brompton Road recently voted in favour of establishing a new Business Improvement District, or BID, to support the area. Thanks to the new Brompton Road BID, which came into operation on October 1, the district will now receive £6 million of new private sector investment over the next five years to help it to upgrade the public realm, improve traffic management, enhance the local environment and recover from the impact of COVID-19.

Cllr Elizabeth Campbell, Leader of the Royal Borough of Kensington and Chelsea, said "As our first Business Improvement District in the borough, the creation of the Brompton Road BID marks a really exciting time of change and growth for our business


community. With two other BIDs in the pipeline for Kensington High Street and King's Road, we want to continue supporting the future of our fantastic local high streets."


Hugh Seaborn, Chief Executive of Cadogan and Chairman of the Brompton Road Partnership, said "this is a great result for the Brompton Road. The BID will act as a voice for businesses and a catalyst for much needed improvements which will benefit everyone who lives and works here. The BID will work in partnership with our two local authorities, who have been supportive throughout, the Mayor and local resident and amenity groups to help secure a vibrant, viable and sustainable future for Knightsbridge" [bromptonroadbid.co.uk](http://bromptonroadbid.co.uk)

PARTRIDGES is adding an exciting new flavour to its popular range of Chelsea Flower Gins. This month, get ready to sample Chelsea Bun Gin, which contains botanicals and spices inspired by the flavours of the Chelsea Bun. Expect a tipsy twist on a traditional treat.  
*2-5 Duke of York Square*







poggen  
pohl 

**New Studio Opening Autumn 2021**

**Poggenpohl Chelsea**  
265-267 Fulham Road | London SW3 6HY  
phone 020 7730 7927  
[chelsea@poggenpohl.com](mailto:chelsea@poggenpohl.com)  
[www.chelsea.poggenpohl.com](http://www.chelsea.poggenpohl.com)

**FIRST IN GERMAN LUXURY  
KITCHEN ARCHITECTURE  
POGGENPOHL.COM**

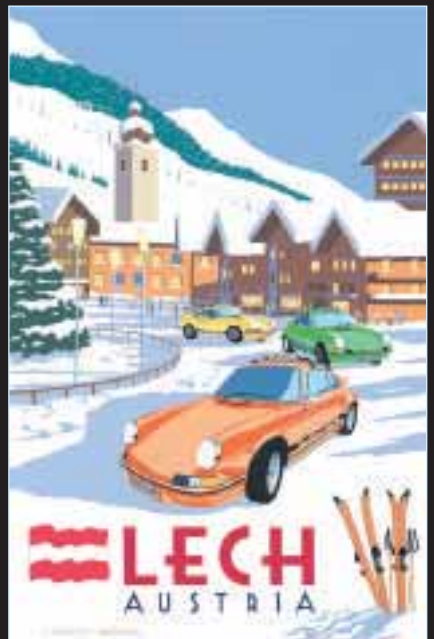
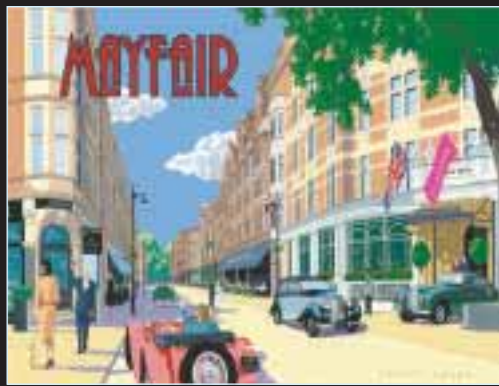
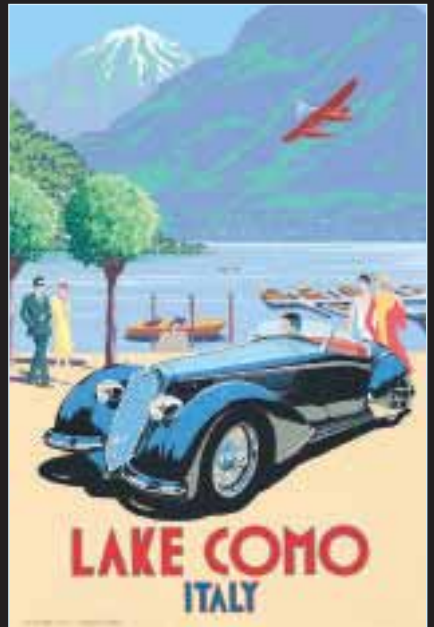




# PULLMAN EDITIONS



ORIGINAL, LIMITED-EDITION ART DECO POSTERS



Limited to editions of 280, our newly-commissioned Art Deco posters feature glamorous holiday destinations around the world, ski resorts in the European Alps, and the world's greatest historic automobiles. **Over 100 designs to choose from**, all printed on 100% cotton fine art paper, measuring 97 x 65 cm. **Priced at £420 each** (inc. UK sales tax).

**Private commissions are also welcome.**



@pullmaneditionsposters

**Pullman Editions Ltd**  
94 Pimlico Road  
Chelsea  
London SW1W 8PL

[www.pullmaneditions.com](http://www.pullmaneditions.com)

[info@pullmaneditions.com](mailto:info@pullmaneditions.com)

Tel: +44 (0)20 7730 0547



Our central London gallery

All images and text copyright © Pullman Editions Ltd. 2021

**View and buy online at [www.pullmaneditions.com](http://www.pullmaneditions.com)**





**FROM NOVEMBER 6**

**Known And Strange:  
Photographs from the Collection**

This arresting new exhibition from the V&A explores the power of photography to transform everyday life. Explore some of the most compelling achievements in contemporary art photography, with more than 50 images created by renowned names as well as emerging talents.

**Victoria & Albert Museum, Cromwell Road**

**UNTIL DECEMBER 11**

**Jonathan McCree:  
I Never Imagined It  
Could Be Like This**

Don't miss this exhibition of new work by British artist Jonathan McCree, whose brightly coloured sculptures are made using cut and folded cardboard. McCree's architectural creations will fill the gallery space, with visitors invited to step over pieces that lie horizontally across the floor, or to navigate around sculpture groups that lean up against the wall.

**The Foundry Gallery,  
39 Old Church Street**



# Art / News

**The newly arrived Soho Home** on Duke of York Square has launched Soho.Home Studio, a space for creatives to showcase and sell their work. A dynamic line-up of artists, designers, authors and florists will display their collections in the studio space: expect to see the likes of Let's Do Better, a non-profit art collective telling black stories, and Priya Ahluwalia, a London-based designer who will be hosting a 3D exhibition. **Soho Home, 6 Duke of York Square**



KAY GASEI, ARTIST IN RESIDENCE

**NOVEMBER 10 TO  
DECEMBER 7**

**Lionel Smit:**

**Solo Exhibition**

Enjoy an exhibition of new paintings and sculptures by celebrated South African artist Lionel Smit. In this new body of work, Smit uses portraiture to reflect on the Western Cape communities in which he lives and works, creating brightly coloured paintings and highly textured bronze sculpture.

**Everard Read,  
80 Fulham Road**



**NOVEMBER 10 TO 27**

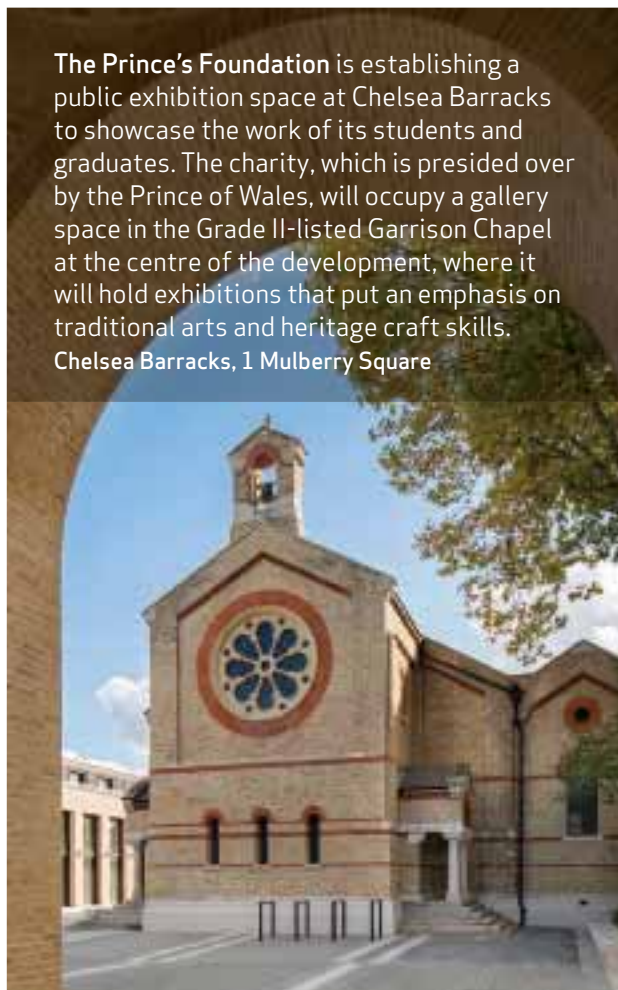
**Bridget Lansley: Love Life**

Explore the vibrant world of Bridget Lansley, an artist who creates deceptively simple paintings using rich blocks of colour. This solo exhibition will take inspiration from Scottish landscapes, the world of sports and the great outdoors.

**Cricket Fine Art, 2 Park Walk**

The Prince's Foundation is establishing a public exhibition space at Chelsea Barracks to showcase the work of its students and graduates. The charity, which is presided over by the Prince of Wales, will occupy a gallery space in the Grade II-listed Garrison Chapel at the centre of the development, where it will hold exhibitions that put an emphasis on traditional arts and heritage craft skills.

**Chelsea Barracks, 1 Mulberry Square**





Not yet...

Not yet...


Now.

Find your partner in property today.

Knightsbridge  
52-54 Sloane Avenue  
London SW3 3DD  
020 8033 4108

Chelsea  
352A King's Rd  
London SW3 5UU  
020 3813 9302

[knightfrank.co.uk](http://knightfrank.co.uk)

 Your partners  
in property  
for 125 years



# The big picture

## CELEBRATING SAATCHI GALLERY, A CHAMPION OF THE ARTS IN THE HEART OF CHELSEA

THE SAATCHI GALLERY has been an iconic part of Chelsea's cultural landscape ever since 2008. Today, it routinely wows visitors with landmark exhibitions and boundary-pushing contemporary art, from the epic photography of JR to the ancient treasures of Tutankhamun's tomb.

But scratch the surface, and you'll soon discover that there's far more to Saatchi Gallery than big names and priceless paintings. In fact, on your next trip, we'd recommend bypassing the big exhibitions altogether (at least for now!) and heading instead for the Learning Gallery on the top floor.

It's here that a different kind of magic happens. This gallery isn't reserved for big-name artists; instead, it's a place for schools, charities and marginalised members of the community to share their creative work with the world. In the last few years, it's hosted exhibitions

of work by the homeless, the elderly, care leavers, young people, and those suffering from early-stage dementia. It's a unique and exciting space in which ordinary

people can share their diverse experiences through art, in the very same building that also exhibits works by the likes of Andy Warhol, Tracey Emin and Lucian Freud.

Of course, celebrating creativity in the community has always been one of Saatchi Gallery's central aims - and never more so than in the three years since it became a registered charity in 2019. Today, its mission is to work with young people and community groups across the UK to provide access to art - whether that's through free visits, workshops, online



Lala Thorpe, Head of Learning at Saatchi Gallery



'London Grads Now. 21' is at Saatchi Gallery from November 4 until January 16. Featured works include (left to right)

Night Bathers 3 (2021)



by Melitta Nemeth, UAL: Camberwell School of Art

Untitled by Emma Liao, UAL: Chelsea School of Art

Untitled (from All the Jacks) (2021) by Ahren Warner Goldsmiths University of London

Snake and Veil by Lindsey Jean McLean, UCL: The Slade School of Fine Art

Over there by Hee Jyung Kim, UCL: The Slade School of Fine Art



resources, activity trails or a dedicated learning space.

"Our celebrated Saatchi Gallery Learning Programme was created to further the Gallery's mission to inspire and engage a diverse audience to the cutting edge of contemporary art and culture"

says Lala Thorpe, Head of Learning. "The programme sets out to foster creative thinking across a wide range of age groups, abilities and interests, encouraging participation through our online resources."

And Saatchi Gallery's learning department has recently received a boost thanks to a brand-new partnership with M&C Saatchi. The three-year collaboration will involve new on-site workshops, community engagement projects and an annual art prize, all designed to inspire and nurture the next generations of artists.

"This ground-breaking partnership will provide a meaningful contribution to the arts" says Moray MacLennan, M&C Saatchi CEO. "Our ambition is to bring art and culture to a younger and more diverse

audience because, quite simply, creativity changes everything."

Until January 16, Saatchi Gallery is also holding a major exhibition dedicated to MA graduates from London's leading art programmes. Following the unprecedented cancellation of graduation shows as a result of the pandemic, the gallery saw an opportunity to support young people starting out in creative careers. The London Grads Now. 21 exhibition will use nine galleries across two floors, displaying more than 250 artworks created and curated by over 200 young art graduates.

100 per cent of proceeds from any sales will be retained by the artists, funding them as they continue to flourish as creatives.

"The London Grads Now. 21 exhibition is a beautiful opportunity to show the works of dedicated artists who persevered through the most challenging times due to Covid-19" says Goldsmiths graduate LaTosha Monique. "The selected work provides a look as to how creativity plays an active role in sustaining our collective well-being."

In fact, there's never been a more important time to champion the arts among young people. The number of students opting to study Art at GCSE level has plummeted by almost 40 per cent since 2010, while the number of pupils studying Art at A-level has dropped by almost a third. The pandemic resulted in devastating closures for galleries across the country, reducing access to the soul-soothing,

horizon-expanding power of art.

"As the world begins to recover, there is still a need and demand to inspire and grow creatively" says Lala Thorpe. "It is an important time to be collaborative and to learn from one another. We are ambitious in our future plans to expand our Learning Program even further, to inspire an even greater audience with the opening of our next major exhibition London Grads Now. 21, which focuses on celebrating the generation of emerging artists of today."

*London Grads Now. 21 runs from November 4 - January 16 2022. For more information about upcoming events, visit [saatchigallery.com](http://saatchigallery.com) and follow @saatchi\_gallery on Instagram.*

## Events / *Chelsea in Bloom*



CHELSEA BLOOMED INTO  
LIFE THIS SEPTEMBER  
WITH BREATHTAKING  
BOTANICAL DISPLAYS

AS THE FESTIVE SEASON GETS UNDERWAY, be sure to raise an egg nog to the botanical extravaganza that was Chelsea in Bloom 2021. London's largest free flower show returned this September with the theme 'extraordinary voyages', an invitation for Chelsea businesses to celebrate the golden age of travel through creative displays.

And Chelsea certainly rose to the challenge. For six days, the streets blossomed into life with lashings of creative floral art and stunning displays. Tourists and locals could explore everything from hot air balloons to New York cityscapes, via bees, unicycles, ships, butterflies, elephants, vintage cars and pyramids. Complimentary rickshaws were available to whisk visitors on a whistle-stop tour of the sights, and an information point was established on Sloane Square to answer any burning floral questions.

# FLORAL *fantasy*



Images: This page, Joanna Briggs Photography; opposite page, Adam Duke Photography







Michela Domina and  
Susannah Lee (LK Bennett)

Vince Zara  
(Sticks 'n' Sushi)



Lord Chelsea, RHS judges Karen Armstrong,  
Howard Franklin, Julia Ryde, and Cadogan  
CEO Hugh Seaborn

Andrea di Filippo,  
Sara Santini  
(Pretty Little  
London)

## THE AWARDS

Chelsea names and local businesses came together to celebrate Chelsea in Bloom on the outdoor roof terrace at Vardo. Lord Chelsea and Cadogan CEO Hugh Seaborn awarded certificates to the worthy winners.



Janie Yang (Love My Human), India Burrill (Lavender Green), Jennifer Matthews (Love My Human), Toks Aruoture (The Baby Cot Shop)

That wasn't all: in addition to displays from local businesses, magnificent floral artworks from All For Love London were installed in public spaces across Chelsea. A pair of life-sized camels could be found in Duke of York Square, constructed from dried pampas grasses and bark, with seed pods for toes. In Pavilion Road, an enormous floral Statue of Liberty towered over passers-by, constructed out of eucalyptus leaves which mimicked the iconic copper patina of the original statue. A six-metre high statue of the Eiffel Tower graced Sloane Square, woven out of thousands of stems of stripped birch branches and decorated with pink and red roses.

This vibrant floral celebration, produced by Cadogan in association with the Royal Horticultural Society, was a valuable reminder of Chelsea's creative spirit and close-knit community. Roll on next year, when Chelsea will bloom again in May.



## Chelsea in Bloom

### LAVENDER GREEN FLOWERS

#### Best Floral Display

This sustainable (and largely living) installation was inspired by a sea voyage. Coils of rope, mosses, grasses, succulents and seashells all decorated the storefront, while the interior was draped with billowing sails and filled with the sounds of the sea.

*239 King's Road*



### RALPH LAUREN

#### People's Champion

The storefront was transformed into an old-fashioned train carriage, complete with vintage props, antique leather trunks and billowing 'steam' created from wild grasses and clouds of blossoms.

*32-22 Sloane Square*

## Best in show

MEET THE DESERVING WINNERS  
OF CHELSEA IN BLOOM

### STICKS'N'SUSHI

#### Innovation Award

This twisting, turning floral dragon was created using sustainable materials and 6,800 fresh carnations. The dragon's serpentine tail snaked its way in and out of the restaurant, while its piercing eyes lit up at night!

*113-115 King's Road*



### THE CADOGAN, A BELMOND HOTEL

#### Highly Commended

This display made use of antique suitcases and beautiful botanicals, with flowers and plant materials inspired by the 22 countries to which you can travel with Belmond. Hats, binoculars, globes, compasses and brown paper parcels were hidden in the foliage.

*75 Sloane Street*





HANDMADE Chelsea



14<sup>TH</sup> EDITION

THE  
CONTEMPORARY  
CRAFT & DESIGN  
FAIR 12-14 NOVEMBER

CHELSEA  
OLD TOWN HALL



Online: £5  
On the door: £8  
Scan QR Code  
to buy tickets

[handmadeinbritain.co.uk](http://handmadeinbritain.co.uk)

   @handmadebritain



“MOVEMENT IS LIFE,” said British cinema pioneer William Friese-Greene (1855-1921). “Moving pictures will satisfy something deep inside all the people in the world.”

How prophetic these words sound in the centenary year of Friese-Greene’s death, as the Chelsea cinema building bearing a medallion portrait of him undergoes its recreation. We’re talking of course about 196-222 King’s Road, which has its own place in cinema history, but before exploring the fabled site, it’s worth taking a closer look at the man with movie-star looks who was driven by an insatiable appetite to reinvent photography.

Many people assume that cinema, like Hollywood, was an American creation and that the movie camera was invented by midwesterner Thomas Edison. Peter Domankiewicz, who has studied Friese-Greene for the past quarter of a century, presents a more panoramic view. “By 1889, Friese-Greene had not only co-patented a moving-picture film camera but also he’d devised a second, more advanced version which encapsulated five of Edison’s six later patent claims and, indeed, many of the fundamentals of what a typical movie camera would become.”

Friese-Greene’s inventive successes (and commercial frustrations) were chronicled in the 1951 Technicolor biopic *The Magic Box*, which tells the rollercoaster story of his life. The film was a *Who’s Who* of British cinema. The cast included Robert Donat (playing Friese-Greene), Laurence Olivier, Michael Redgrave and Richard Attenborough. Eric Ambler wrote the screenplay. American director Martin Scorsese cited it as a childhood inspiration.

Friese-Greene lived and worked at 39 King’s Road (now a Leon restaurant). He moved there in approximately 1891 to manage a photographic studio for his wife, after he became bankrupt. From outside this address he shot what



## Cinematic Chelsea

THE LIVING HERITAGE OF THE BIG  
SCREEN BY DANIEL PEMBREY



Friese-Greene, and his Chelsea close-up dating back to 1934  
© The Board of Copyrights Trustees of the Science Museum, London



Above: Preview of 196-222 King's Road.

Above right: The King's Road in 1891: what is believed to be the oldest surviving film made in a London street.

is believed to be the oldest surviving film made in a London street. Domankiewicz has reconstructed the reel (search online for: Friese-Greene King's Road 1891). Adds Domankiewicz, "Friese-Greene was experimentally showing films in his workshop." In other words, Friese-Greene can also be viewed as the King's Road's original theatrical exhibitor.

Other theatrical exhibitors followed. There was the Electric Cinema Theatre on the corner of Markham Street (renamed the Classic in 1937), the Cadogan Electric Palace further along the King's Road, and other cinemas down towards Worlds End, all of which flowered in the first half of the twentieth century.

But the Gaumont, which opened in 1934 at 206-222 King's Road, stood apart. It was gargantuan – able to accommodate 2,500 cinema-goers. The vast King's Road exterior was its own show-stopper. Either side of the Friese-Greene medallion portrait were medallions representing comedy and tragedy. On the lower portion of the façade, on either side of the entrance, were Art Deco panels depicting 'The Awakening of Science to the Force of the Elements' and 'The Harvesting of the Elements in the Film' (they were later removed or rendered over). It was as though the façade strove to tell the story of cinema's birth.

After the Gaumont became an Odeon in the 1960s, the cinema's foyer and stalls were converted into a Habitat store, yet it was still a very large cinema with 750 seats. It became the Curzon Chelsea, and after current renovations, it will return as a main auditorium with over 400 seats, plus two smaller auditoriums to be used for separate films or for overflow when staging larger events. Though

more appropriately scaled for today's audiences, the cinema will forsake none of its cultural significance. A film events programme is set to resume there.

One of the traditions of the Chelsea Curzon is celebrating local connections, be they invoked by, say, a special screening of Michelangelo Antonioni's cult Sixties film *Blow-Up* (1966) starring David Hemmings and using various Chelsea locations, or by a 'Q&A' with Mike Leigh, director of *Mr. Turner* (2014), a film that shows the great painter's time in Chelsea.

Not only has Chelsea proved a popular setting for films but also it has been a magnet for film makers themselves. Sir Carol Reed, who directed *The Third Man* (1949), lived at 213 King's Road. Joseph Losey directed another British masterpiece, *The Servant* (1963) starring Dirk Bogarde, Sarah Miles, Wendy Craig and James Fox. *The Servant* used the exterior of the house opposite what became Losey's own home in Royal Avenue, and Bogarde went on to live in Cadogan Gardens.

It should come as no surprise that Chelsea is well connected with the biggest British cinematic beast of all: James Bond. Character creator Ian Fleming lived off Cheyne Walk in Carlyle Mansions, which was known as the 'writers' block' for the number of famous writers residing there (including Somerset Maugham and Henry James). Fleming gave his superspy a flat off the King's Road, and current local author William Boyd, who wrote the Bond continuation novel *Solo*, pieced together what is believed to be the precise fictional address: 25 Wellington Square.

Chelsea was also home to John Barry, the five-time Academy Award winning film composer and conductor who wrote the scores for 125 films, including eleven Bond movies. Barry's former home in Cadogan Square was used for filming *Skyfall* (2012), in which Daniel Craig's Bond, having gone 'off grid', returns and enters the home of 'M' played by Dame Judi Dench. Over whiskies, they agree that Bond must return to active service. The location is visible in exterior shots, and, unusually, the house was also used for interior filming (such interior scenes for Bond movies typically being shot at Pinewood Studios). It is a fitting tribute to Barry, in what turned out to be the highest-grossing Bond film to date.

And the 'cinematic Chelsea' story continues. Cadogan has appointed Futurecity, the cultural placemaking agency, to curate and deliver two prominent artwork panels for 196-222 King's Road that will once again frame the entrance on the King's Road. The panels will be visible to all passers-by and will play an integral role in the reinstatement of the historic façade. A major competition is underway to identify the most compelling designs. Here, invention, art and cinema live on.



John Barry's former home in Cadogan Square, as used in Bond blockbuster *Skyfall*. Unusually, the interior scenes were shot there too. SKYFALL © 2012 Danjaq, LLC and Metro-Goldwyn-Mayer Studios Inc. All rights reserved





# Poliform



*Partridges*  
LONDON

## On the 12th Day of Christmas Partridges delivered to me...

- 
- 12 Traditional Mince Pies
  - 11 Packs of London Cured Smoked Salmon
  - 10 Port and Stilton Hampers
  - 9 Panettones
  - 8 Elvas Plums
  - 7 Bottles of Chelsea Bun Gin
  - 6 Alderton Marmalade Hams
  - 5 Boxes of Luxury Christmas Crackers
  - 4 Chocolate Bath Olivers
  - 3 Free Range Turkeys
  - 2 Gold Plated Buckingham Palace Tea Cups

**And a Partridges' Gift Voucher**

(to buy some of the 10,000 speciality foods, fine wines and Christmas presents)... **in a Pear Tree!**

*Illustration by local artist, Julia Page*

## CELEBRATING PARTRIDGES' 50<sup>TH</sup> CHRISTMAS

**NEW**



Stores Open 8am - 10pm  
& until 7pm on Christmas Eve  
2-5 Duke of York Square, Chelsea SW3 4LY  
17-23 Gloucester Road, Kensington SW7 4PL

FREE LOCAL DELIVERY • Now on DELIVEROO

Follow us on



Use QR code to  
see a digital  
copy of  
**Partridges'**  
**50th**  
**Christmas**  
**Catalogue**



## Food / News



WEST EXPANDS EAST as Pavilion Road's fishmonger The Sea, The Sea has opened a second site in Hackney. A fishmongers-cum-chef's table-style restaurant, it is seriously cool, complete with live fish and seafood in tanks and 12-course tasting menus. Dehydrated fish, anyone?



BEAVERBROOK TOWNHOUSE has opened and, with it, in-house restaurant the Fuji Grill and Omakase Sushi Bar. Designed in a soft green and decorated with woodblock prints depicting Mount Fuji, the restaurant is elegant and seductive. Sashimi, tempura and robata dishes such as the classic miso black cod are flawlessly presented, alongside signature Beaverbrook dishes such as 'Charcoal' Wagyu with Juniper Miso. Do enjoy a post-drink cocktail in the bar – there is pink fitted seating and tables are decorated with new and vintage Japanese matchbox covers.

BELOVED HEALTHY FAST FOOD JOINT LEON has opened a 28 cover, 1,340 square feet space on the King's Road. Digital-first with kiosks for ordering and payments, look out for exclusive new menu innovations and collaborations, as well as the classics: carbon neutral burgers, gluten-free chicken nuggets and more.



## Food / News

SUMOSAN TWIGA has launched an Uptown Brunch, for the perfect combination of disco and dining. Taking place every Saturday from 12-4pm, come along for signature Japanese dishes as well as classic Italian favourites like tortelloni with ricotta, lemon and bottarga. There will be live music followed by a DJ, and a bottomless drinks menu of champagne, cocktails, beer, wine and spirits.



BELOVED PUB THE CHELSEA PIG has reopened, having been around since 1892. With a luxurious facelift courtesy of interiors by Chelsea stalwart Timothy Oulton, the pub is open daily and serves up British favourites such as Scottish scallops, rabbit terrine and Sunday roasts. Cosy weekend lunches await.  
*35 Old Church Street*

THE NEW CHINOISERIE BAR at the Jumeirah Carlton Tower is the perfect cosy place for a festive nightcap. The drinks menu is divided into Signature Cocktails, Rewriting History and No and Low. Sustainability is key – garnishes are limited, bitters are made using discarded citrus peel from the bar, and the bakery's barley goes towards craft sodas.





*Let's*  
**CADOGAN**  
*Together*



**THE CADOGAN**

A BELMOND HOTEL  
LONDON

INCOMPARABLE GENUINE TRAVEL

BELMOND.COM

# *Deli-* CIOUS



SLOANE STREET DELI IS  
BACK – WITH A DIFFERENCE.  
CHARLOTTE PASHA MEETS ITS  
NEW MARKETING DIRECTOR  
KATE DE'ATH

## **WHY WAS NOW THE RIGHT TIME TO REOPEN SLOANE STREET DELI?**

We felt it was the perfect time to open a site to bring the community together; never has that been more important. A home away from home for residents to discover unique flavours and innovative new dishes to bring a freshness to the neighbourhood... much in line with the new cool direction of the area. The deli is now being operated by London Restaurant Group, hopefully you will see more of us in the future.

## **WHAT IS NEW AND DIFFERENT ABOUT IT SINCE THE LAST SLOANE STREET DELI?**

Everything. It's a new menu, new design, new team with former Le Manoir chef Dave Watts at the helm. You will need to see for yourself!

## **WHO DO YOU THINK YOUR CLIENTELE WILL BE?**

It is designed to be for locals with a few tourists on the weekends.

## **WHAT GAP IN THE MARKET DO YOU THINK SLOANE STREET DELI FILLS?**

We see it rather as complementing what is already there and providing additional options. "Grab and go" options, especially for those working in the area, are limited. We strongly believe we can provide an exceptional offsite dining alternative.

## **WHAT WILL THE MENU BE LIKE?**

The vegetarian-forward menu embraces a style rooted in British regionality: with Mediterranean and Middle Eastern notes to deliver balanced dishes utilising the freshest locally sourced ingredients. Guests will be offered a gastronomic





Interior focus is with the customer journey always at the forefront, from the deli counter to the barista bar, to the market and the eatery.

#### **WHY IS CHELSEA A GOOD PLACE TO HAVE A RESTAURANT?**

There is a real sense of new life coming to Chelsea, Cadogan is doing an incredible job at bringing new businesses to the neighbourhood. Duke of York market on a weekend and Pavilion Road are my Chelsea go-to spots.

#### **WHAT ARE YOU MOST LOOKING FORWARD TO ABOUT THE FESTIVE SEASON?**

The lights, the concerts, the traditional feeling of Christmas time... It's a magical moment on Sloane Square and the wider Chelsea area.

#### **HOW WILL YOU BE SPENDING CHRISTMAS?**

Packing hampers at the deli... of course!

*162B Sloane Street*

## **“GUESTS WILL BE OFFERED A GASTRONOMIC JOURNEY UNLIKE ANY OTHER”**

journey unlike any other, an array of vegetarian bases from which to build. Additional proteins, dips and sides provide unlimited options, with which guests can interact with the menu.

#### **WHAT ARE YOUR FAVOURITE MENU ITEMS?**

Popular in the tastings have been French toast, date syrup and orange scented labneh and Shakshuka, tahini and laffa bread from the breakfast menu, with the Fontal cheddar toasty a firm favourite with the entire team. The signature dips are also set to become a neighbourhood “must try”.

#### **WHO DESIGNED THE INTERIORS?**

Rawan Muqaddas Behbehani, London/NYC interior architect has imagined a fresh all-new interior, inspired by the cover of a 1920s book by Mario Dei Gaslini where a fabric-wrapped female is printed in sage on to cream. Her intention was a play on today's modern deli and eatery, with customer service at the heart.



## Food / Festive memories

### TONY ROBERT HEAD CHEF AT VARDØ

Growing up in South Africa it was always warm over the Christmas period and was filled with food and family. Mum's honey roast gammon was always a firm favourite of mine and great for a few days after. Also having a Braai / BBQ on Christmas Day was always a treat. My most memorable Christmas dinner was the first time myself and my now wife hosted Christmas in London for the family. We absolutely loved getting everyone together and cooking for them. I'm a bit of a traditionalist so this year I am going for a boned and rolled stuffed Turkey. It's a lot easier to cook and cut than a bird on the bone, and I'll always have a honey roast gammon on the table too.

Christmas is all about family and food for me, the lead up to the big day is always such a busy time so I make the most of the few days off over Christmas. We do coffee and pressies with the family over a bit of salmon and scrambled eggs for breakfast. Then a morning Christmas walk is a must to work up a good appetite before home and to the kitchen for a few of hours. I'm a big fan of board games so it's good to squeeze a game of Monopoly in. Late afternoon is dinner followed by Christmas pudding, cheese and a cheeky glass of port, good conversation and a Christmas film.



## Feasts of Christmas *past*

CHELSEA FOODIES  
LOOK BACK AND  
REMINISCE ON  
THEIR FAVOURITE  
CHRISTMAS DINNER  
MEMORIES







## ALEX FUBINI MANAGING DIRECTOR AT ICE CREAM UNION

Christmas was hot summer days by the swimming pool, BBQ's, holidays and Santa in shorts! And presents of course. My most memorable Christmas dinner was whole BBQ Lamb slowly cooked over wood at my uncle's ranch in Argentina, I must have been 14 years old and nothing has topped it yet!

Now, I normally go for goose, lamb or a large côte de boeuf, never turkey. We always have more panettone that we can eat.

I'm an atheist born in a Jewish family, so Christmas itself has little meaning. I mostly celebrate time with family, eating good food and enjoying what life brings.

We spend Christmas day by the fireplace roasting chestnuts.

My favourite festive menu item at Ice Cream Union is Zabaione ice cream! It is one of my favourites and works so well during cold December days.



Alex Fubini: "I'm the taller kid with the grey jacket, my brother Franco is in the blue tracksuit, my mom just behind my brother. I was probably 11 or 12."



## OLIVIA BURT HEAD CHEF AT STANLEY'S

When I was little, Christmas was all about the parties that we used to have in the run up before Christmas Eve. The smell of mulled wine is still very much the smell of Christmas for me and it has inspired a new dessert which features on the menu this Christmas season at Stanley's.

Now, there is a much bigger focus on the food - every year I need to top the last with a better turkey. Last year was probably my most memorable because it was just spent with my closest family. I had all the time to think about making the perfect feast. This year, I will be making turkey with all the trimmings, brining my turkey in a citrus and garlic brine for 24 hours and then slow roast. Christmas Day is very family focused and we normally spend the morning opening a few presents and having a long breakfast, turkey is usually saved for mid afternoon around 4 pm.



### MARCO CALENZO EXECUTIVE CHEF AT THE CARLTON TOWER JUMEIRAH

My best memory from when I was a little boy is on the morning of the 25th when I would run to look for the gifts left by Santa Claus.

Christmas represents the time where I did not go to school and would meet with all my family at my grandmother's house. My mum, my aunts and my grandmother would cook all day from early morning until the evening. There were plenty of pork-based dishes, sausages, ragu, free range chicken, stuffed artichokes, gnocchi and tortellini in capon broth [a kind of chicken broth].

The most memorable moment was when the table was set-up. It was 15 meters long and it was filled in every corner with Christmas delicacies. It was like an old-time banquet, we never ran out of food and everyone always had something to eat.



"Here I am washing the cherry tomatoes from my grandmother Assunta's garden.

These tomatoes were used to make a tomato 'conserva', which was preserved in jars.

I ate those tomatoes until I was about 18 years old, I never ate bought conserva until my grandmother passed away!"

I usually cover Christmas at work. I definitely will cook for my family but with my wife being Japanese, New Year is also a very important celebration.

For Al Mare, I am thinking about making a capon-based dish, perhaps a tortelli di capon, cooked in its broth, served with mortadella, parmesan cheese and shaved white truffle from Alba. At home, I will make fresh pasta with my family and have my children help cook dishes on my Japanese charcoal grill. I don't cook any turkey as I am not a fan but I would certainly love to enjoy shellfish and some Italian truffle, because why not?

My dream is to replicate with my children the atmosphere that reigned at my grandmother's house and to create that magic again, showing them authentic products like the ones I used to enjoy. The products I used to eat in my family came from the local farmers and vegetable gardens. This is true luxury.





ST PHILIP'S SCHOOL

The country's leading Catholic prep school for boys aged 7-13



*Inspirational teaching in a warm and nurturing environment with exceptional results*

*50% of leavers since 2019 to Eton, City of London and Dulwich*

[admissions@stpschool.co.uk](mailto:admissions@stpschool.co.uk)

6 Wetherby Place, London SW7 4NE



[stpschool.co.uk](http://stpschool.co.uk)



BREAD AHEAD is the place for Christmas cake and mince pies – get the latter in store from November 13 onwards. “Last year we added a bit of extra nutmeg to the mincemeat,” says baker Matthew Jones. “This year I’m planning to put in some mace, as well as nutmeg – old school. Mace has a slightly more spicy, peppery flavour, which works really well. The pastry will remain the same – mum’s pie crust, back from childhood days in Sevenoaks. As usual, we will brush the top with a little egg and sprinkle a bit of demerara sugar for flavour and crunch.” You could also try your hand at a mince pie, yule log or Christmas pudding workshop at Bread Ahead on Pavilion Road (see online for details).

# *TIME to SHOP*

THERE ARE LESS THAN TWO CALENDAR MONTHS TO GO UNTIL THE BIG DAY – SO SHOP LOCAL AND STOCK UP ON EVERYTHING YOU NEED TO MAKE IT A WONDERFUL TIME FOR FAMILY AND FRIENDS





# Christmas / Shopping

AT PROVENANCE, the most popular items at Christmas are the traditional centrepieces: bronze turkeys, hams and gammons, three bird roasts and whole duck, and increasingly rib of beef is becoming popular as a centrepiece. Provenance offers all the trimmings – stuffing, cranberry sauce, gravy, pigs in blankets and devils on horseback.

Provenance has been using the same British farmers since it opened in 2013. All use traditional farming methods of rearing the animals slowly for optimal quality and flavour whilst also providing a long and happy life for the animals. Almost all key ingredients and sides are made in-house.

FISH COMES from The Sea The Sea: festive stuffed trout filled with blanched kale and seasoned with orange skin powder, cinnamon, and truffle butter; caviar paired with blinis, a caviar spoon, and crème fraîche; turbot, wild mushrooms duxelles, brown butter solids and vanilla. All seasonal offerings have optional pairings of champagne and wines for the perfect Christmas celebration.

WHEN YOU'RE PLANNING your Christmas feast, don't forget the vegetarians! Daylesford Organic is offering a warming beetroot wellington that's ideal for meat-free guests, packed with earthy flavours like lentils, celeriac and chestnut. They also offer vegan alternatives to some quintessential Christmas desserts, including a dairy-free yule log made with salted caramel, and a vegan Christmas pudding densely packed with dried fruit, citrus peel and nuts. While you're at Daylesford, you could also pick up some of its



festive drinks: its mulled wine is spiced with star anise, cinnamon, nutmeg, clove and orange zest, while its new spirit, 'Darling Clementine', is a deep winter concoction made with citrus, cardamom and an artisanal fir tree liqueur from the forests of eastern France. Serve straight from the fridge over ice with a slice of orange zest.

GOOD VEG is an important part of any Christmas celebration. When it comes to sourcing your festive five-a-day, Natoora is the ideal destination, selling everything from jewel-like Sicilian pomegranates to green-streaked winter tomatoes from Italy and Spain. The seasonal fruit and veg are sustainably sourced and sold in plastic-free punnets or home-compostable bio-nets. Andreas of Chelsea Green is another great destination for veg; a local grocer that has supplied the River Café and Petersham Nurseries, among other prestigious venues.

WHAT WOULD Christmas be without a cheeseboard? Luckily, Jared Wybrow from London Cheesemongers is on hand to recommend some must-have cheeses...



## Christmas / Shopping

"Stilton is the quintessential Christmas cheese. I'll be choosing between Colston Bassett and Stilton on the big day – both are delicious.

"I like to have a mild, light-textured cheese for Boxing Day. Appleby's Cheshire or Kirkham's Lancashire would both be great eaten with Christmas cake or mince pies, or in ham sandwiches.

"For soft cheese, it has to be Baron Bigod. It's made in Suffolk, so it's essentially English brie, and it has a slightly lighter, brighter acidity than French cheese.

"I would also recommend Vacherin Mont d'Or, a soft, rich gooey cheese, which comes in a little box: you can pop it in the oven with a big splash of white wine on the top and plenty of garlic, and bake it to make a kind of fondue. It's perfect with leftover roast potatoes and Christmas ham!

"I always have a really big piece of French or Swiss mountain cheese at Christmas – think gruyère or comté. They keep really well, so you can just keep a chunk on



the side in the kitchen for people to keep chipping away at."

AND FINALLY, for those looking to add a touch of luxury to their Christmas spread, feast your eyes on The Golden Hamper (priced at £225). Designed to celebrate the Partridges' 50th anniversary, this traditional wicker hamper is packed with everything you could want to complete a festive spread: champagne, prosecco, coffee, truffle oil, chocolates from Charbonnel and Walker, artisan panettone, alpine flower honey... the list goes on. It would also make a (very generous) gift for the foodie in your life.

With a bounty of festive food and drink available in the local area, your Christmas dinner should be a meal to remember. Enjoy!







# BRETZ®

## INTERIORS & FURNITURE

SINCE 1971

HAPPY  
CHRISTMAS  
AND NEW YEAR

LONDON / ISTANBUL 359 Kings Road Chelsea SW3 5ES, LONDON

Store: +44 20 7351 1102 Mob : +44 73 8554 2815

[www.bretz.com.tr](http://www.bretz.com.tr) @bretzhestia @bretzuk



**BRETZ®**  
INTERIORS & FURNITURE  
SINCE 1971

**BRONZE COUPON**

**£50 OFF FOR**

**ACCESSORIES**

When you spent over £250

This coupon is not redeemable for cash.

This coupon cannot be combined  
with other coupons and with other  
promos and offers as well.

Valid Untill: 15/01/2022



**BRETZ®**  
INTERIORS & FURNITURE  
SINCE 1971

**SILVER COUPON**

**£250 OFF FOR**

**ARMCHAIRS & SIDE TABLES**

When you spent over £3,000

This coupon is not redeemable for cash.

This coupon cannot be combined  
with other coupons and with other  
promos and offers as well.

Valid Untill: 15/01/2022



**BRETZ®**  
INTERIORS & FURNITURE  
SINCE 1971

**GOLD COUPON**

**£400 OFF FOR**

**SOFAS & DINING TABLES**

When you spent over £4,000

This coupon is not redeemable for cash.

This coupon cannot be combined  
with other coupons and with other  
promos and offers as well.

Valid Untill: 15/01/2022







Alice Herbert



# *TABLE*

TABLESCAPING –  
ELEVATING THE TABLE  
TO A WORK OF ART,  
ALMOST TOO BEAUTIFUL  
TO EAT OFF – IS VERY  
MUCH A ‘THING’ AND  
AT CHRISTMAS IT  
COMES INTO ITS OWN.  
CHARLOTTE PASHA  
GETS TIPS FROM ALICE  
HERBERT, CHELSEA  
RESIDENT AND ONE  
HALF OF TABLESCAPING  
BUSINESS LAY LONDON







## *Interiors / Tables*

Thames, a botanical-themed afternoon tea in Cadogan Gardens, and an über-luxe picnic in Hyde Park. Sourcing tableware with a twist is huge fun, so we love receiving unusual briefs.

### **HOW WOULD YOU CREATE THE PERFECT FESTIVE TABLE?**

Festive tables should have a sense of joy and glamour. Mix metallic tones and plush textures. Flowers make the table sing, and I love sprawling, banquet-like vines, or vases of blossomy hydrangeas in deep tones.

### **HOW CAN PEOPLE UPGRADE THEIR TABLES USING WHAT THEY HAVE AT HOME?**

Tall candles in varying heights adds a party mood, and a colour-combo can look great too. A quick cheat is with bowls of pomegranates or clementines – and flowers. If you're short on florals, using little bud vases scattered along the table. Lastly, you can get creative by making your own place cards for guests.

### **HOW CAN YOU ELEVATE THE EVERYDAY TABLE TO THE EXTRAORDINARY?**

Personalising the placement is always special. This could be illustrations of the guests at the table (you may need to outsource this!), napkins with embroidered initials or small keepsakes.

### **WHAT DO YOU LOVE MOST ABOUT LIVING IN CHELSEA?**

It's quite village-y, which I love as I walk everywhere. I love spying on the prettiest streets, especially when the blossom and jasmine is out.

### **WHERE ARE YOUR LOCAL HAUNTS?**

I've been to a new restaurant Huo on Park Walk a few times. Their menu and cocktails are very more-ish. I'm a sucker for anything sweet in JuiceBaby. I love walking down Pavilion Road as it's got a village-like feel.

### **WHAT ARE SOME OF YOUR FAVOURITE FESTIVE MEMORIES?**

We would always make a big fuss of the Christmas table when I was young. My mother has a very impressive collection of decorations so the table would be wild with sparkling leaves, feathery birds, berries – you name it!

*laylondon.com*

# TALK

### **WHAT IS LAY LONDON?**

LAY London is the city's first rentable tablescapes service. We style beautifully crafted tableware into colourful 'ready-to-lay' tablescapes that can be hired for any occasion. Hosts can simply pick their favourite LAY look, just like picking a party outfit. We deliver to their door, collect after the party and can even 'lay-up' the table too, so the host need not lift a finger.

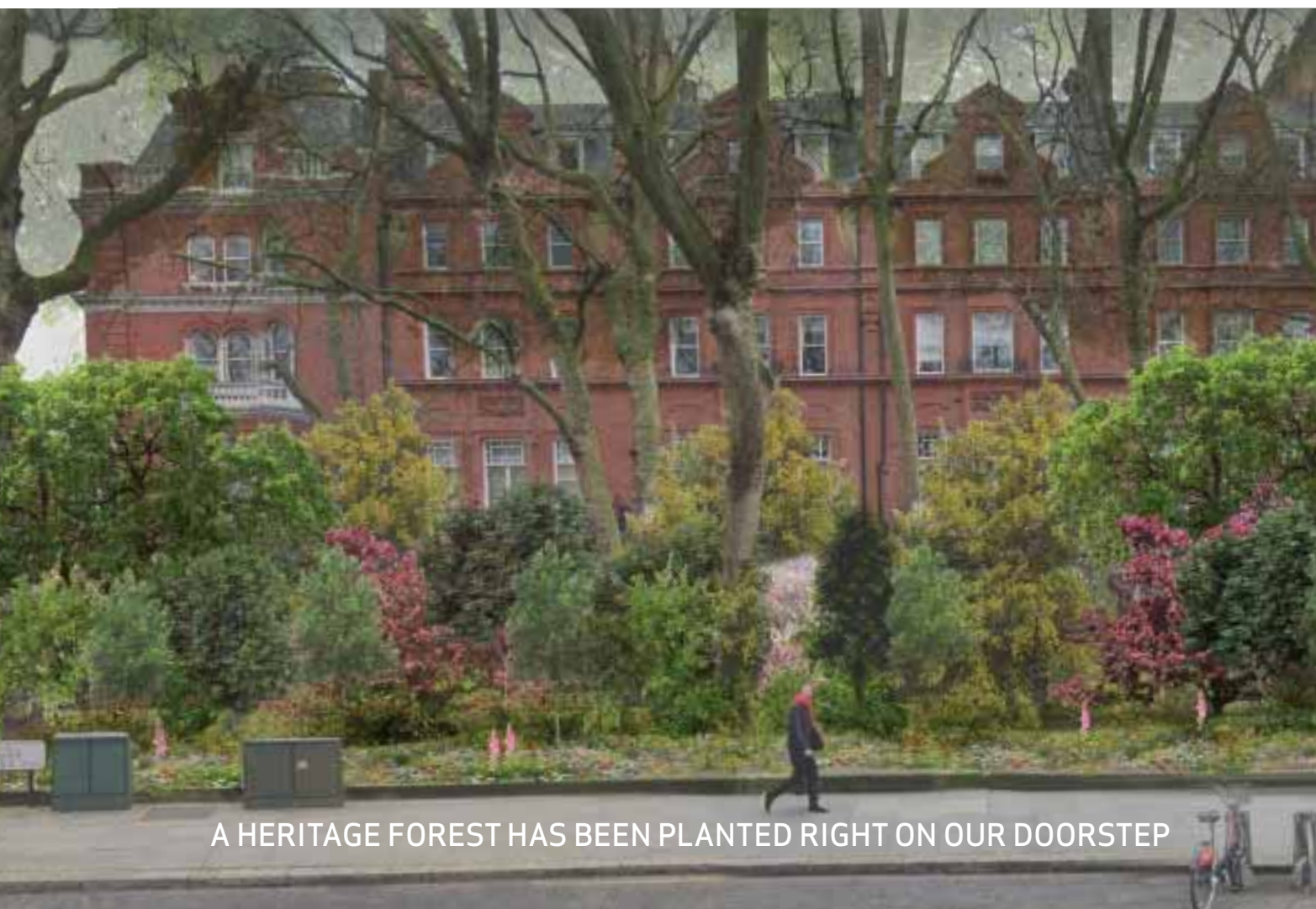
### **WHEN DID YOU FOUND IT AND WHY?**

We wanted to find a way to provide people with wow-factor table settings that bring joy and fun to their tables when hosting friends. Renting your tableware means you can enjoy luxury tableware at a fraction of the cost of purchasing new. Not to mention no 'single use' purchasing. 'Rent-host-return' is our motto, and it's the new consumer model for a reason – look at Rent the Runway!

### **WHAT HAVE BEEN SOME OF YOUR MOST MEMORABLE TABLESCAPES?**

We've styled a birthday event on a yacht on the





A HERITAGE FOREST HAS BEEN PLANTED RIGHT ON OUR DOORSTEP

# *Call of the wild*



Students from Christ Church Chelsea  
and Holy Trinity Schools

CENTRAL LONDON'S first heritage forest has been planted on Pont Street. A partnership between SUGi, Louis Vuitton and Cadogan, the 240 sq m pocket forest will see 630 native trees and shrubs planted in total. Within three years, it should become totally self-sustaining, creating a peaceful oasis in the midst of the urban hustle and bustle.

The project has been overseen by SUGi, an organisation dedicated to restoring 100 per cent native forests in urban spaces. Planted according to the complex 'Miyawaki' method, it's made up of four layers – shrubs, sub-trees, trees and canopy – with at least three trees planted per square metre. The native plants were selected based on extensive research, and will include Red Campion, Sessile Oak, Hawthorn and a forest floor dense with shrubbery and wildflowers. The use of native species means that the forest will require less maintenance and watering, removing the need for pesticides and artificial plant foods, while creating an ideal habitat for up to 80 species of insect.

Elise Van Middeltem, founder of SUGi, says: "the forest will be a green space for local neighbours to find quiet moments of respite and to take in the joys of nature in a vibrant and busy city. Visitors can



# *Sustainability / Pont Street*



Lord Chelsea with Mayor Cllr Gerard Hargreaves

take in the changing colours of the trees, the aromas of the blossoms and the sound of rustling leaves. Thanks to its urban location, this forest will offer not only an individual experience but a communal one. We hope it becomes a recognised source of joy for all."

The project is another step in Cadogan's ambitious 10-year sustainability strategy, Chelsea 2030, which aims to improve air quality and enhance green infrastructure and biodiversity across the estate. Cadogan CEO Hugh Seaborn says: "This forest is certainly a complementary contrast to the 15 acres of more manicured gardens across the estate and our plans to make Sloane Street a dramatically greener boulevard from Knightsbridge to Sloane Square. It is vital that we try new opportunities to accelerate positive change and we believe this will be a beautiful and necessary addition, while offering inspiration for

many similar opportunities – we look forward to monitoring its growth and impact in partnership with Louis Vuitton."

A little patch of wilderness in the heart of Chelsea, the Pont Street forest promises to provide a thriving green space for locals and visitors to enjoy for years to come.



Cadogan CEO Hugh Seaborn, Amandine Rohmer (Louis Vuitton) and Elise Van Middelhem (SUGI)

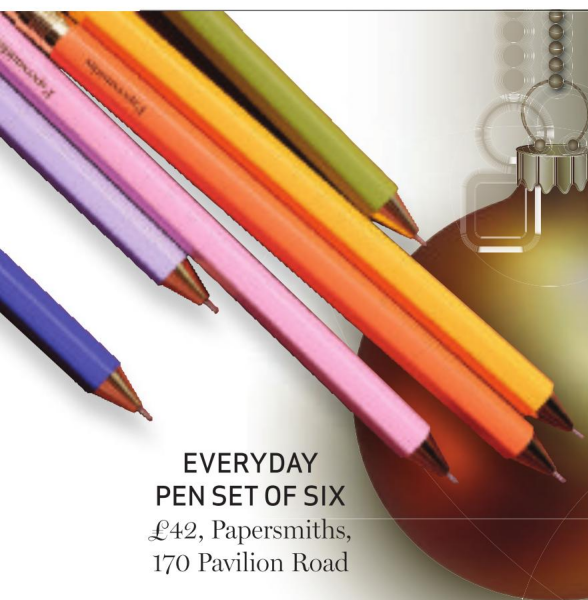


Pont Street forest imagined in full bloom



# Christmas / Gift guide

## Glorious gifts



**EVERYDAY  
PEN SET OF SIX**  
£42, Papersmiths,  
170 Pavilion Road

HAVE YOURSELF A  
MERRY CHRISTMAS  
WITH THE BEST  
GIFTS FOUND IN  
CHELSEA



**PYJAMAS**  
£465, Olivia von Halle,  
190 Pavilion Road



**TATAH GLASSES**  
£265, Moscot,  
74 King's Road



**SOMETHING  
YOU  
NEED**



**TAYSIDE SHOOTING  
SOCKS**  
£65, Oliver Brown,  
75 Lower Sloane  
Street



**BRITISH STANDARD MUGS**  
£12, David Mellor, 4 Sloane Square



**WINTER INDULGENCE  
CANDLE**

£140,  
The White Company,  
4 Symons Street



**CHARLES BRACELET IN  
ITALIAN BLACK LEATHER  
WITH STERLING SILVER**

£279, Tateossian,  
55 Sloane Square



**SOMETHING  
YOU WANT**

**SMALL DONKEY TOTE**

£450, Anya Hindmarch,  
15-17 Pont Street



**ROCOCO ORANGE  
DARK CHOCOLATE  
THINS 150G**

£17.95,  
Harvey Nichols,  
109-125  
Knightsbridge



**18CT YELLOW GOLD & BLUE  
LAPIS LAZULI CUFFLINKS**

£3,750, Theo Fennell,  
169 Fulham Road



**HOLIDAY FULL  
ACCESS CHEEK SET**

£46, NARS,  
27 King's Road

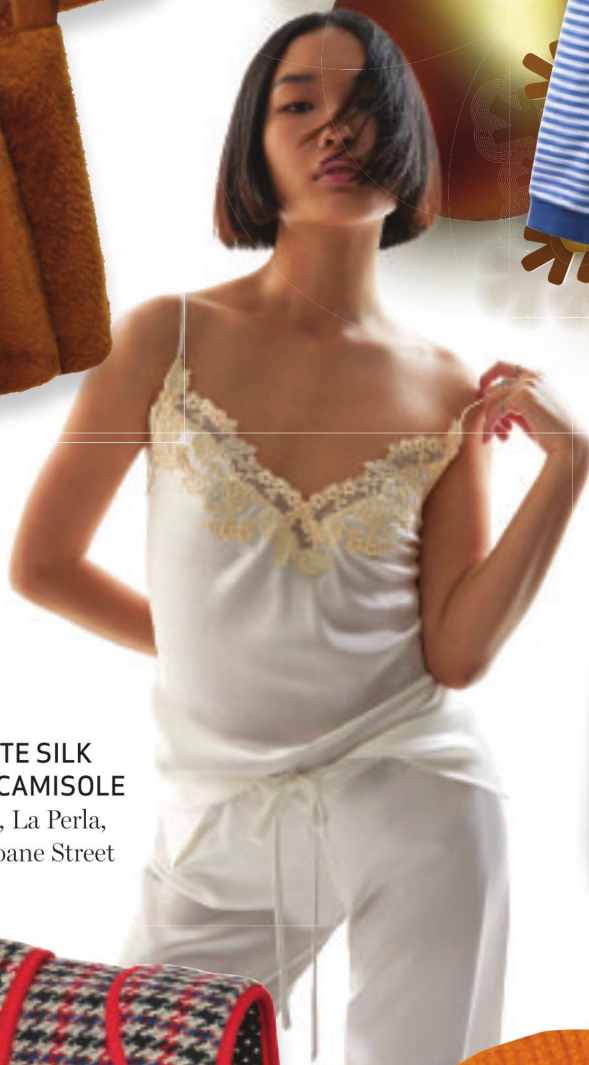


## Christmas / Gift guide

### SOMETHING TO WEAR



**TEXTURED  
MERINO COAT**  
£2,495, Joseph,  
Duke of York Square



**WHITE SILK  
SATIN CAMISOLE**  
£460, La Perla,  
163 Sloane Street



**WOOL-BLEND  
DOG COAT**  
£100, LK Bennett,  
164-166 King's Road



**JINGLES POM  
POM SLEEP  
SUIT**  
£22, The Little  
White Company,  
4 Symons Street



**BOTTLE GREEN  
SWEATSHIRT**  
£185, Fursac,  
Duke of York Square



**CASHMERE  
WRISTWARMERS**  
£55, Brora,  
6 Symons Street





# JOIN mayfairPA

Mayfair PA is a group of dedicated professionals who enjoy bespoke monthly events in and around London's best areas with the chance to experience luxury boutiques, fine dining restaurants, hotels and business services - all looking to showcase the best they can offer to Personal or Executive Assistants.



As a key influencer in your organization, these evenings are wonderful opportunities to engage with premium brands that will be on your company's radar going forward. Always varied and fun, Mayfair PA is here to point you in the right direction, whatever your company's needs.

Joining Mayfair PA and attending its events are free of charge. To receive regular email event invitations, we do require your name, the company you represent and your work email address for this.

Please contact  
[MayfairPA@pubbiz.com](mailto:MayfairPA@pubbiz.com)  
to join the fun





## Christmas / Gift guide



### VISIONAIRE 58 – SPIRIT

This book of Alexander McQueen's work can be planted to create a flower garden.  
£1,500, Peter Harrington,  
100 Fulham Road

## SOMETHING TO READ



### JOURNEY TO THE RIVER SEA, BY EVA IBBOTSON

Joanna Hasler, at Hill House School, says: "I discovered this when I became a teacher. Every class I've read it with has been captivated."  
£7.99, John Sandoe,  
10 Blacklands Terrace

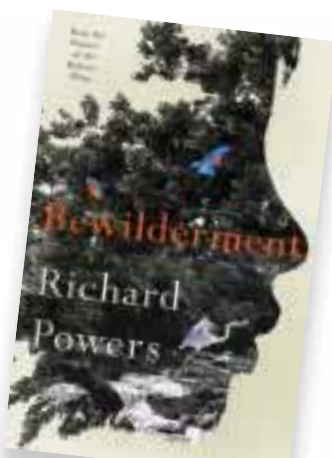


### A GARDEN EDEN

Relive the glories of Chelsea in Bloom with this floral tome from Taschen, a stunning compendium of the very best botanical illustrations.  
£50, TASCHEN, Duke of York Square

### BEWILDERMENT BY RICHARD POWERS

According to Jade Rose, manager of Waterstones King's Road: "*Bewilderment* is a fantastic pick, very of the moment in the way it discusses our imperilled planet."  
£16.99, Waterstones,  
158 King's Road



### WHY DO WE WEAR CLOTHES? BY HELEN HANCOCKS

This colourful book is the perfect pick for budding fashionistas or costume designers, packed full of lavishly illustrated facts about the clothes we wear.  
£12.99, V&A Museum Shop,  
Cromwell Road



The background of the advertisement features several dark blue gift boxes from Ted Baker. One box in the foreground is open, revealing a teal-colored interior with a fine, repeating geometric pattern. Another box is partially visible behind it, and a third is in the upper left corner. The lighting is soft and focused, creating a sense of depth and highlighting the textures of the boxes and the patterned lining.

TED BAKER  
LONDON

*Ted's Grooming Room*

This Christmas  
gift a traditional  
barbering experience at  
Ted's Grooming Room

---

136 King's Road,  
Chelsea, London,  
SW3 4XB

020 3397 9966



# Forward-thinking legal advice

Being prepared for tomorrow means making the right decisions today.

When you need exceptional, tailored legal advice focused on your future, delivered with the utmost care, simply get in touch.

Call us on 020 7591 3333  
or find out more at [www.crippspg.co.uk](http://www.crippspg.co.uk)







CASHMERE BRAND Brora has been pronounced carbon neutral by decarbonisation specialist BeZero Carbon. The world's first 'full life cycle assessment' of cashmere took into account every part of the process, including the feed and herding techniques used on the goats which produce cashmere wool. Brora cashmere is now deemed one of the most sustainable materials – a perfect excuse to buy a Christmas jumper. *6 Symons Street*

THEO FENNEL has released his autumn/winter range. The colourful collection features statement pieces in the shape of snakes, salamanders, hearts, keys, bees and game birds, bedazzled with diamonds and sapphires in a rainbow of bold colours. Most of the pieces can be customised and engraved to create one-of-a-kind gifts. Theo also creates intricate custom pieces (often complete with hidden compartments). *169 Fulham Road*



CONGRATULATIONS TO BRUNELLO CUCINELLI, who was named 'Designer of the Year' at the GQ Men of the Year Awards. Cucinelli was presented with his award by actor Jonathan Bailey, who claimed that "his name is synonymous with Italian excellence" and praised his artisan craftsmanship. *159 Sloane Street*

DUCO BLOEMERS, a Chelsea local, has started a new circular clothing company called Plainandsimple. Buy one of its super-soft cotton t-shirts and wear it until it's worn out, at which point you can return it in exchange for £6 of store credit. Your well-loved shirt is then broken down and turned into new garments, reducing textile waste and protecting the planet. [plainandsimple.com](https://plainandsimple.com)



IT'S NEVER TOO EARLY to start thinking about your spring style. Quirky British brand RIXO recently debuted its Spring '22 collection at London Fashion Week, with styles inspired by vintage postcards, holiday deckchairs and tourist souvenirs. The collection also celebrates RIXO's extended sizing range, which now covers sizes 6 to 20. *104 King's Road*

OLIVER PEOPLES has collaborated with Brunello Cucinelli to bring out a stylish new eyewear range. With stores just a few doors apart on the King's Road, this collaboration is a match made in Chelsea heaven. The resulting collection takes inspiration from old Hollywood, as well as the Italian skyline. *151 Sloane Street*





# BUILT ON PURPOSE

INEOS



RESERVATIONS OPEN

Scan the QR code to be first in line







# *Happy Birthday Boden*

AS THE BRITISH BRAND  
CELEBRATES ITS 30TH  
BIRTHDAY, ALICE CAIRNS  
CATCHES UP WITH  
JOHNNIE BODEN



IT TAKES A CERTAIN KIND OF BRAND to flourish for 30 years – and an even rarer one to become a touchstone for an entire aspirational lifestyle. For me, the mere mention of ‘Boden’ is enough to conjure up images of Breton stripes, patterned wellies, velvet jackets, and beaming family groups striding through the countryside.

In fact, so synonymous is Boden with a colourful and countrified all-English neverland that it comes as some surprise to me to learn that its founder spent the first five years of his career as a stockbroker on Wall Street – “something I wasn’t particularly good at and didn’t enjoy!” he says.

It wasn’t until Johnnie Boden received a windfall inheritance from an uncle that he was able to experiment with a series of less lucrative dream jobs: as a publican, a teacher, a music label owner, and finally, as a fashion entrepreneur.

“I’d always had a keen interest in fashion” he says. “I spent my teenage years in flea markets in Notting Hill hunting down vintage bargains; these early fashion moments influenced my appreciation of well-made classics. When I was working in America as a stockbroker, I had an idea that mail-order would take off, even though it wasn’t considered in any way cool or interesting at the time. So at home in West London, on my living room floor, I launched the first hand-drawn Boden catalogue with a line of just eight menswear products.”

Modelled by a handful of Johnnie’s obliging friends, the clothes went down a treat. A year later, in 1992, Boden introduced womenswear, and in 1996 Mini Boden was born. Although it’s still primarily an online and mail-order brand, it also has two retail stores, including 20-23 Duke of York Square (“as a West London based brand, Chelsea was the perfect choice for a retail space to showcase the brand in all its glory,” Johnnie says.)

So what’s the secret to Boden’s success? It’s a brand that refuses to follow trends, instead reinventing a core collection of classic styles and shapes in new prints and colours. In fact, to

celebrate its 30th anniversary, Boden has opted to release a lightly modernised capsule collection of some of its greatest hits, using the very same British model (the gorgeous Jean Campbell) who first starred in a Boden campaign at the age of four in 2002.

Luckily Boden’s refusal to chase trends or to court what’s ‘cool’ has meant that many of its products have stood the test of time in a way that’s almost unheard of in the fast-paced world of high street fashion. Just think of the Boden Breton – a laid-back but stylish scoop-neck top that’s been visible on women across the UK for the best part of three decades.

“The Breton has been a continual bestseller for us over the past 30 years and is something we have become known for. Everyone needs one for those ‘don’t know what to wear’ days,” Johnnie says.

And nobody appreciates a Breton Boden more than the Duchess of Cambridge, who frequently sports them – along with her collection of Boden coats, shirts and dresses – for photo ops, causing instant sell-outs.

Is it any wonder, then, that Johnnie and his team have bestowed a familiar name on their ‘Boden woman’?

“We like to refer to our ideal customer as ‘Kate’. She is a busy, positive woman, interested in style but not obsessed with trends. She loves colour and print. We want her to look and feel amazing, whatever she’s doing, whether that’s working or walking the dog.”

Whether or not you identify with that description, Johnnie clearly knows his audience: far from being confined to the home counties, the brand now boasts a veritable army of 11.5 million ‘Kates’ across 145 countries. So how does Johnnie feel knowing that his brand of brightly coloured, trend-defying fashion is still flourishing at 30?

“I can’t quite believe it – I feel a bit proud and rather old. I’ve had the most brilliant time over the years, with some fantastic people, many of whom are still working with me. I still love it, and will keep going until I’m told I’m useless – probably by my family!”



# *Fashion / Annoushka x Temperley*

IT'S OFFICIAL: Alice Temperley and Annoushka Ducas have tied the knot. For years, these design icons have shared a gift for bringing out the boho beauty in their clients. While Annoushka works in fine jewellery and Alice specialises in gowns, the pair are joint masters of the casual-luxe aesthetic that's prized by brides everywhere.

Which is why the release of Annoushka x Temperley is big news. This new bridal jewellery collection is a true marriage of minds, a glittering range of non-traditional rings, earrings, necklaces and bracelets driven by Alice and Annoushka's shared vision of what a contemporary wedding should look like.

"People don't come to Alice Temperley looking for a wedding dress" Alice tells me. "They come for a very beautiful white dress that they can wear for their wedding, and then keep on wearing, because it's not overtly bridal. We wanted the same to be true of this collection: we wanted to create pieces that brides could stack up and wear in new ways, long after their big day!"

That meant that demure pearls or simple diamond studs ("quite twee" according to Alice) were out. Instead, Annoushka x Temperley is made up of surprising and versatile pieces: detachable earrings that can be worn as studs or drops; glittering disco rings studded with aquamarine and pearls; diamond chokers that can be accessorised with dangling charms.

"It was so important to us that these pieces should have movement" says Annoushka. "The way a piece of jewellery feels is just as important as the way it looks. When jewellery doesn't move, it can feel very heavy and uncomfortable. These pieces have beautiful movement, which works so well with the fluidity of Alice's dresses."

And while this collection certainly has a contemporary feel, it doesn't shun tradition entirely. The use of recycled gold not only protects the planet ("we don't need to be digging up our world any more!" says Annoushka), but provides a bride with her 'something old'. A tiny blue sapphire hidden on the backs of the earrings supplies the 'something blue'.







Alice Temperley (right) and Annoushka Ducas (left)

# *Dynamic DUO*

ALICE TEMPERLEY AND  
ANNOUSHKA DUCAS  
HAVE COLLABORATED  
ON A RANGE OF BRIDAL  
JEWELLERY. ALICE  
CAIRNS FINDS OUT MORE

“We also used doves, which are symbols of love, and pearls, which are symbols of purity,” explains Annoushka. “Jewellery is all about telling a story.”

At the centre of this story is the bride – in this case, a woman who isn’t afraid to push boundaries on her big day. So which muse did the pair have in mind when designing the collection?

“Me!” say Alice and Annoushka at once.

“I always design for someone like me, who wears things with a little bit of edge” Alice explains. “If we were designing for someone who wasn’t anything like us, we’d be doing something quite weird!”

“It’s a completely authentic way to approach design” Annoushka agrees. “I don’t design anything that I wouldn’t wear myself. How selfish is that!”

On the topic of muses – as on so many things – Alice and Annoushka appear to be in total agreement. But though their collaboration may have been a match made in heaven, their union hasn’t been all wedded bliss.

“It was really interesting collaborating with Alice” Annoushka says. “Usually, there’s a bit of reluctance to upset someone, but that wasn’t the case here! At one point, Alice actually looked at what we had so far, and said ‘I don’t know what’s gone on here, but it’s dreadful.’ And it was! So I would say she pushed me to do things I wouldn’t have done on my own, and the collection is all the better for that.”

These (refreshingly honest) negotiations took place over Zoom, in the depths of the pandemic, at a time when most weddings were being postponed, cancelled, or drastically downaized. Luckily, Alice and Annoushka’s designs are perfect for an industry that’s bouncing back in new and exciting ways:

“Weddings will probably stay smaller and more individual” predicts Alice. “But the industry will always survive! Hopefully it’ll be nice for brides to come into the showroom and see a real collaboration, which is all about celebrating love in a beautiful, individual way!”

*Annoushka Boutique, 41 Cadogan Gardens*



BECOME A LOCAL HERO  
THIS CHRISTMAS BY  
SUPPORTING SOME OF  
OUR BRILLIANT LOCAL  
CHARITIES, SAYS SOPHIA  
CHARALAMBOUS

# *The season of giving*

## CW+

CW+, THE CHARITY of Chelsea and Westminster Hospital NHS Foundation Trust, is launching Best For You, an in-patient adolescent unit to tackle the devastating effect of the pandemic on young people's mental health. Launching next year, it will link with a day service and community service, while the digital platform has been fast-tracked to reach children and adolescents struggling with their mental health. Chris Chaney, chief executive of CW+ says: "We are three local NHS Trusts who have come together with local services and national partners to deliver a profoundly different model of care for young people in mental health crisis and their families."

*To find out more and learn how you can help to support the programme, visit [bestforyou.org.uk](https://bestforyou.org.uk)*



## GLASS DOOR

GLASS DOOR homelessness charity partners with churches and community centres to offer shelter and support, and will remain open throughout the Christmas period. Glass Door is anticipating a surge in demand this winter as Covid-19 emergency protection measures end, which will leave many struggling households at risk of homelessness. CEO Lucy Horitz says: "Christmas can be an incredibly difficult time for people who don't have a support network of family and friends. For people who are experiencing homelessness, there is the added practical challenge of vital services and amenities such as day centres, libraries and shops shutting down over the festive period." This year, Glass Door is encouraging people to donate funds rather than items. Lucy adds: "We also encourage people to stop and have a conversation with someone they see on the street. Do ask if you can offer a cup of tea or have a chat. Our guests tell us they feel invisible and incredibly lonely on the streets, and having a conversation with someone can help. You could also ask if they know about local support services in the area, and print information on our services to hand out."

*To find out more and print information on daytime support services visit [glassdoor.org.uk](https://glassdoor.org.uk)*



# People / Local heroes

## CHELSEA PHYSIC GARDEN

FOR 350 YEARS, Chelsea Physic Garden has supported the community, growing herbs to fight illness and nurturing green space where people can connect to nature. There are always new ways to help support the Garden. Learning volunteers are needed for the Learning Department that teaches over 5,000 children every year about the importance of plants in their lives. Marketing manager Rachel Bates says: "Chelsea Physic Garden has stayed open for our community throughout much of the last 18 months, and remained a focal point as a green space for local residents, with possibilities for social interaction and time spent in nature away from everyday life. Our community of Friends (members of the Garden) enjoy the opportunity to have a coffee, read the newspaper, or have a chance encounter with a neighbour or friend, all within the walls of our secluded four-acre botanical garden. Our learning team has been running community workshops and school sessions with local residents and is looking to expand this offer in the next year." Some of the activities include garden tours for visiting school groups, pond-dipping and seed planting, researching and preparing workshops. Chelsea Physic Garden is especially looking for Sunday volunteers.

*For more information, please email [learning@chelseaphysicgarden.co.uk](mailto:learning@chelseaphysicgarden.co.uk)*



CHELSEA THEATRE

BUILT IN 1977 as part of the World's End Estate, Chelsea Theatre was designed to be an ideal 'super community' with 750 affordable flats, community spaces, shops, a primary school, and a church, all within walking distance of each other. For over 40 years, it has been a home for culture, community and creativity, housing everything from after-school clubs, youth projects and early years programs alongside exercise classes, film clubs and yoga specifically for over 50s. In January 2020, it re-opened after a multi-million pound refurbishment. The theatre is looking for people to get involved with their Christmas programme in whatever way possible.

*To find out more and how you can get involved visit [chelseatheatre.org.uk](http://chelseatheatre.org.uk)*



**"OUR LEARNING TEAM HAS BEEN RUNNING COMMUNITY WORKSHOPS AND SCHOOL SESSIONS WITH LOCAL RESIDENTS AND IS LOOKING TO EXPAND THIS OFFER IN THE NEXT YEAR"**



# THE *CHELSEA* AWARDS

WITH THE CHELSEA AWARDS ON THE HORIZON, DON'T MISS YOUR CHANCE TO NOMINATE THE LOCAL BUSINESSES AND INDIVIDUALS THAT MAKE OUR COMMUNITY SO SPECIAL

IT'S TIME TO SEND in your nominations for The Chelsea Awards, a celebration of excellence, innovation, craftsmanship and culture in our local area. At a time when many of us have never felt more grateful for the strength and support of our community, the Chelsea Awards are the perfect way to say thank you. Making a nomination is your chance to shine a spotlight on the local shops you love, the cultural institutions you couldn't live without, and the community heroes who make our

area a better, brighter place to be.

Each of the eight awards categories has been designed to celebrate a different form of local excellence, from artisan craftsmanship to compassion in times of crisis. Receiving a Chelsea Award lets a business or individual know that they're a valued part of their community, encouraging them to continue their good work and celebrating the part they play in our unique and special area.

SIMPLY VISIT  
**CHELSEAWARDS.COM**  
AND FILL IN THE FORM TO  
SHINE A SPOTLIGHT ON THE  
PEOPLE AND ORGANISATIONS  
THAT MATTER TO YOU.

ONLY IN CHELSEA  
A business that brings  
something unique to the area

IN GOOD TASTE  
Someone who has made Chelsea  
more delicious

MASTER OF CRAFT  
An artisan who elevates the  
everyday to the extraordinary

COMMUNITY HERO  
An organisation or person that  
has benefited the community  
through their actions



# Community / *The Chelsea Awards*



ABOVE: WINNERS AT THE PREVIOUS AWARDS  
BELOW: SOHO HOME – NEW TO DUKE OF YORK SQUARE  
RIGHT: HOLY CARROT

In 2019, the inaugural Chelsea Awards were a celebration of Chelsea's vibrant restaurants, artisanal hubs, streets, shops and residents. Plenty of beloved local institutions took home prizes: from designer David Mellor who won the 'Masters of Craft' award, to independent booksellers John Sandoe Books who carried away the 'Only in Chelsea' prize. 'In Good Taste', an award which celebrates Chelsea's most delectable food and drink, went to Royal Warrant-holders Partridges, while The Fashion School won the 'Future Forward' accolade, celebrating its sustainable

fashion workshops and zero-waste practices.

As well as celebrating local excellence, the Awards also shine a light on those who serve their community through acts of charity. In 2019, 'Cultural Champion', a hotly contested category given Chelsea's wealth of wonderful arts venues, went to the Royal Court – a recognition of the support it provides to emerging talent.

The 'Community Collaboration' winners were Glass Door, the homelessness charity which encourages the community to join forces at the annual Sleep Out in order to fund night shelters throughout the winter. Finally, 'Community Hero' went to the K&C Foundation, the independent charity which supports disadvantaged people across the borough.

This year, you have the chance to nominate a whole new raft of worthy winners. Perhaps you've been touched by the work of a local charity, inspired by the courage of a neighbour, or bowled over by the delicious food at a local restaurant. You may have fallen in love with one of the brand-new shops and



**COMMUNITY COLLABORATION**  
Businesses that have joined forces for the greater good

**FUTURE FORWARD**  
A company that is innovating to meet tomorrow's challenges. That could be sustainability, experiential retail or something quite different

**CULTURAL CHAMPION**  
An organisation that has enriched Chelsea's culture and raised the area's profile

**COMPASSION IN THE CRISIS**  
An individual or business that has adapted and served the community during the Covid-19 pandemic

## Community / The Chelsea Awards

“OUR BUSINESS IS BUILT ON THE SUPPORT OF THE LOCAL COMMUNITY. WE LOVE THE WAY THE AWARDS HIGHLIGHT THE SMALL INDEPENDENT BUSINESSES THAT GIVE THAT SPECIAL SENSE OF PLACE”

Melissa McIntyre, Studio Director, The Hot Spot Yoga

venues that have arrived in Chelsea in 2021: from plant-based restaurant Holy Carrot to chic interiors brand Soho Home. Whatever and whoever has inspired you this year, be sure to let us know by making your nominations for each of the eight Chelsea Awards categories. Your favourites will thank you!

This year we're also excited to be celebrating a brand-new prize category: the 'Compassion in the Crisis' award. It's an opportunity to recognise the extraordinary acts of everyday heroism and kindness that we've seen during the Covid-19 pandemic, at a time when the local community has been an invaluable lifeline for so many. Here at Sloane Square, we've been lucky enough to meet some of the inspiring residents and organisations

who've gone above and beyond during the pandemic – including Mark Gallagher, the Evening Standard seller who walked 20 miles a day to deliver papers to vulnerable people throughout Chelsea; and Age UK's Jess Millwood, who supported elderly people in the borough during the pandemic. Your life may have been touched by a volunteer, an inspirational teacher, a local doctor, a community group, a charity or a neighbour.

Nominating them for this brand-new Chelsea Award is a wonderful way to show them that their hard work has been recognised, and that they played their part in making their community feel a little safer during an unprecedented and difficult time.

So what are you waiting for? Take a walk around Chelsea, revisit old favourites, try out new destinations, and when you're ready, head to [chelseaawards.com](http://chelseaawards.com) to make your nominations. We can't wait to celebrate the wonderful people, shops, venues and artisans who make Chelsea such a unique and special place to live and work.

The Chelsea Awards are created by Sloane Square and Cadogan.

The awards are also kindly sponsored by Knight Frank, The Hot Spot Yoga, Cripps Pemberton Greenish, Ineos, Ted's Grooming Room, The Cadogan, a Belmond hotel and Poliform UK.



CADOGAN



Poliform

TED BAKER  
LONDON

*Ted's Grooming Room*

INEOS

THE CADOGAN  
A BELMOND HOTEL  
105-107 SLOANE SQUARE

AGE UK'S  
JESS  
MILLWOOD  
HAS HELPED  
SUPPORT  
THE ELDERLY  
THROUGHOUT  
THE PANDEMIC





# Planning to travel?

As a government registered private COVID-19 provider we can help

- IN CLINIC & REMOTE DAY TWO TESTS
- RAPID ANTIGEN FIT TO FLY TEST
- RAPID THREE HOUR PCR FIT TO FLY TEST
- NEXT DAY FIT TO FLY PCR TEST
- TEST TO RELEASE
- RAPID ANTIBODY TEST

Located at 18 Milner Street, SW3 2PU

**£10 OFF YOUR FIRST BOOKING  
USE CODE: CHELSEA10**



## A SERVICE CULTURE DOESN'T HAPPEN BY ACCIDENT

In need of a private chef, butler, chauffeur or a personal assistant?

Celebrating 20 years of matching private support staff with individual's requirements, ensuring service excellence no matter where they are in the world.

Call us today on 020 7917 1801

- Butler
- Chauffeur
- Chef
- Chief of Staff
- Close Protection
- Estate Manager
- Gardener
- House Attendant
- Housekeeper
- House Manager
- Live-in Couple
- Private PA

**FIERCELY DISTINCTIVE** | BUSINESS SUPPORT | PRIVATE | HOSPITALITY | TECHNOLOGY | HR  
[tiger-private.com](https://tiger-private.com)

**TIGER**  
Private

WITH YOUR  
HELP, AN OLDER  
RESIDENT  
WILL NOT HAVE  
TO MAKE THE  
DIFFICULT  
CHOICE THIS  
WINTER BETWEEN  
HEATING AND  
EATING

Give where  
you live

## Winter warmth campaign

AS THE AUTUMN brings news of increasing fuel bills, the Kensington + Chelsea Foundation has relaunched its annual Winter Warmth campaign to support vulnerable residents who cannot afford to heat their homes.

The K+C Foundation works with local partners, Age UK K+C, Citizens Advice K+C and Nucleus Legal Advice Centre to provide financial support to older residents like Sarah, who are struggling to keep warm through the winter months.

### SARAH'S STORY

Sarah is 71 years old and has a number of serious, long-term health conditions, which mean much of her time is spent at home, where she lives alone. She also has limited mobility and needs to heat her flat all day in order to avoid becoming hospitalised.

Sarah was becoming increasingly anxious about fuel costs and worried about how she would pay her heating bills and still have enough money left to pay for food. Thanks to a grant from our Winter Warmth campaign, Sarah's heating is now paid for and she is able to heat her home without stress and anxiety. She is able to use her limited income for food

and other essential living expenses without making difficult choices.

IF YOU'RE ABLE TO, we invite you to please donate your Winter Fuel Allowance, or an amount of your choice, to support an elderly person in the community who is struggling to pay their winter fuel bills. Your donation will ensure that neighbours like Sarah can stay warm this winter. Visit <https://thekandcfoundation.com/donate> to make a difference.

### ABOUT US

The Kensington + Chelsea Foundation is an independent charity, currently supporting more than 100 impactful local projects that improve the lives and life chances of some of the most disadvantaged and vulnerable residents in our borough.

If you or your company would like to know more about supporting this work and getting involved, contact [team@thekandcfoundation.com](mailto:team@thekandcfoundation.com)

Registered charity number  
1125940

Kensington  
+ Chelsea  
Foundation  
A better life together





Eaton Square Schools



# Preparing for the future

Eaton Square's world-class family of schools is expanding. Discover Eaton Square Senior School's new Sixth Form – opening in September 2022.

**LOCATED IN A HISTORIC BELGRAVIA townhouse,** expertly revived to provide the best facilities for Sixth Form students, Eaton Square Senior School's new Sixth Form is fundamentally future-focused, without losing sight of traditional values. Offering a vibrant, entirely bespoke, educational framework, a structured Preparation for Life programme lies at its core.

This Preparation for Life programme, unique to Eaton Square's new Sixth Form, fully prepares each student for life beyond school. Enabling every student to take their place as a truly global citizen, its modules span financial literacy, the basics of business, managing mental health, entrepreneurship and leadership.

To further equip students for the future, Eaton Square has made the wise choice to offer both A Levels and T Levels. Naturally, most students will choose the traditional 3 A Levels route, but some may be more suited to a T Level: the equivalent to 3 A Levels and including a minimum 45 day in-depth industry placement. This structured programme enables students to gain valuable workplace experience, while also allowing employers to spot early talent in their industry. The resulting benefit to a student's future employment is evident. T Level options at Eaton Square range from Accounting and Finance to Digital Production, Design and Development.

Naturally, university preparation at sixth form level is paramount. As the only central London Sixth Form in the prestigious Dukes Education family, Eaton Square enjoys unparalleled access to world-leading university consultancies. Ranging from A-List

Education (the UK's leading US university admissions specialists) to Oxbridge Applications, the wealth of support and insight into the world's finest universities is outstanding.

Environment naturally plays a key part in the success of any education. Eaton Square's location is unparalleled. Just a short walk from London Victoria, access from all parts of London and the Home Counties is simple. Located just moments from the globally renowned cultural venues, business hubs, tech districts, royal palaces, restaurants, shops and cafes of our capital, opportunities and places to develop internships and friendships are abundant.

In this ever-changing world, Eaton Square students are aptly prepared to embrace the future with the skills and confidence required for success.

## TO FIND OUT MORE

You're invited to one of Eaton Square's next Sixth Form Evenings:

**When:** Tuesday 16th November 2021,  
Wednesday 23rd February 2022

### RSVP:

[admissions.senior@eatonsquareschools.com](mailto:admissions.senior@eatonsquareschools.com)

[www.eatonsquareschools.com](http://www.eatonsquareschools.com)

+44 (0) 20 7491 7393





SUPERSTAR VIOLINIST JANINE JANSEN RECORDED HER NEW ALBUM, '12 STRADIVARI', AT CADOGAN HALL. ALICE CAIRNS MEETS JUSTINE WADDELL, THE PRODUCER OF A NEW FILM ABOUT THE EXTRAORDINARY PROJECT

LEFT: JUSTINE WADDELL. RIGHT: JANINE JANSEN



# *In HARMONY*

LAST YEAR, Dutch violinist Janine Jansen visited Cadogan Hall to record some of the most expensive music ever made. Her album '12 Stradivari' was performed on 12 exquisite Stradivari violins: each worth a small fortune, and collectively valued at an estimated £200 million. Watching from the wings was Justine Waddell, the producer of *Falling for Stradivari*: a new documentary which tracked the progress of this ambitious project.

"The violins were collected together by a London violin dealer called J & A Beare" explains Justine. "Each instrument was carefully chosen to encompass different periods in Stradivari's career as a luthier.

Many of the violins also had remarkable histories, having been played by great virtuosos like Oscar Shumsky, Fritz Kreisler and Ida Handael. Janine's challenge was to bring out the characteristic sound of each violin, and just as importantly, not to be intimidated by the great violinists who'd played them before!"

The presence of all 12 violins in one venue was a logistical marvel in its own right: the instruments are usually housed in private collections and museums in far flung corners of the globe. Some of them – including the Alard-Baron Knoop ("the greatest violin in existence" according to Justine) – have been in private hands for the





“JANINE’S CHALLENGE WAS TO BRING OUT THE CHARACTERISTIC SOUND OF EACH VIOLIN”

best part of a century, and have never been recorded.

“It’s a very thorny issue, because the less a violin is played, the less wear and tear it sustains” Justine says. “But at the same time, a violin is a tool, and if it doesn’t get used, that can also be bad for it. This project was a wonderful thing because it gave each of these violins an outing, a chance to be heard.”

In addition to drawing together an A-team of Antonio Stradivari’s finest, the project also secured the help of celebrated pianist Sir Antonio Pappano. With Janine flying in from Sweden and Sir Antonio making the journey from Italy, it’s unlikely

that this busy pair would have been able to work together at Cadogan Hall if the pandemic hadn’t cleared their schedules. But just as things were progressing apace, disaster struck.

“Between the rehearsal period and the recording at Cadogan Hall, Janine became very ill with Covid. We immediately stopped filming for three weeks, and it was touch and go whether we’d be able to keep the violins in the UK: they came from all over the world and there were hugely complicated issues around insurance and the schedules of other violin players!”

Luckily, Janine made a full recovery after three weeks of illness – but by that point, the project’s already complex logistical schedule was in jeopardy.

“When we did begin to record at Cadogan Hall, the first violin Janine played actually had to be flown straight back to Japan that evening. That gives you an idea of the immensely finite window we were working in – and the degree of pressure on Janine!”

But Janine was not to be deterred. Against the odds, she overcame nerves, illness and time pressure to record 15 pieces of music on the 12 violins, with each piece carefully chosen to suit each violin’s particular sound and history. Cadogan Hall made the perfect venue for the recording, an intimate but historic space in which the instruments could shine.

“It’s a beautiful hall, with so much history – it was wonderful to film there rather than in a recording studio” Justine explains. “Listening to Janine play in Cadogan Hall was like standing in a waterfall for five days – just this sort of cascading bath of incredible sound. On top of that, the way Janine and Antonio interacted with each other was so funny and inspiring (and occasionally spiky!) I was blessed to be there, in that wonderful space, watching two musicians at the peak of their powers and listening to instruments that may never be heard live again in my lifetime! Janine absolutely conquered this project, and she remained this wonderful, funny, open artist letting us all follow her on journey. I find that utterly inspiring.”

A man with dark, wavy hair is sitting on a wooden chair in a room with a fireplace and a window. He is wearing a grey coat, a dark scarf, and blue jeans. His hands are clasped in his lap. The room has a wooden floor and a fireplace on the left. A window is visible on the right.

# *The* **MUSIC MAN**

FESTIVE CONCERTS AT CADOGAN HALL ARE A REAL TREAT. THE SIXTEEN WILL BE PERFORMING CONCERTS CENTRED AROUND BOB CHILCOTT'S DOUBLE-CHOIR ADVENT ANTIPHONS, ALONGSIDE CAROLS. WE MEET CONDUCTOR HARRY CHRISTOPHERS CBE



# Music / Harry Christophers

## HOW LONG HAVE YOU BEEN A CONDUCTOR?

When I left university, I was a professional singer for six years (Westminster Abbey, BBC Singers and English Music Theatre Company) but during that time I had started conducting. I formed The Sixteen in 1979, and was conducting mostly chamber orchestras from all over Europe (Northern Sinfonia, Avanti!, Deutsches KammerPhilharmonie and so on). I actually never trained as a conductor, in fact I have never had a conducting lesson. I suppose I developed my own style by watching other conductors really closely and I had the immense privilege of working with the likes of Boulez and Ozawa.

## WHAT IS YOUR FAVOURITE PART OF YOUR JOB? AND YOUR WORST?

The best is planning programmes, the whole rehearsal process and of course the concert itself. The worst bit is sitting in an airport lounge waiting to depart.

## WHAT IS YOUR FAVOURITE PIECE OF MUSIC TO CONDUCT?

Monteverdi *Vespers*.

## WHAT IS YOUR FAVOURITE CHRISTMAS CAROL?

Ding dong merrily on high!

## WHAT IS YOUR FAVOURITE CHRISTMAS MEMORY?

Spending Christmas at Canterbury Choir

School when I was a chorister there. I was a day-boy but all the day-boys (and there were only about four of us out of the 18 choristers) were invited to stay over the Christmas period. The music was great, the Cathedral looked amazing and going out to pick holly in the woods all added to the magical festivities.

## HOW DO CHRISTMAS CONCERTS DIFFER FROM OTHERS THROUGHOUT THE YEAR?

For me, it's the opportunity to sing some well-known carols mixed with evocative works from the Renaissance and the modern day, which makes our concerts special. But it's the feeling of love, hope and sheer happiness which emanates from the audience wherever we go. Everyone is smiling!

## WHAT IS SPECIAL ABOUT PERFORMING AT CADOGAN HALL IN PARTICULAR?

Our concerts sell out pretty quickly so it is always special performing to a capacity audience. For the singers, it's lovely - a warm acoustic, not too reverberant and they can see all the audience's faces, which lends a unique ambience to the evening.

## WHERE ELSE DO YOU LIKE TO GO IN CHELSEA?

The Royal Court Theatre and, of course, The Antelope, and then I always buy the family Christmas jigsaw puzzle from Peter Jones in Sloane Square.

[cadoganhall.com](http://cadoganhall.com)



## Beauty / News

CULT FAVOURITE BRAND Juliette Has A Gun has launched its latest fragrance Lili Fantasy, now available at Harvey Nichols and Peter Jones. Lili Fantasy is an extravagant cocktail of white flowers and amber notes with a gourmand twist. Could this be your winter spritz?



URBAN RETREAT AT THE WHITE HOUSE is launching an exciting new beauty concept. Located on the second floor of the chic building, Studio 1 will be led by top hair and beauty experts Angelo Seminara and Lan Nguyen-Grealis. Forget traditional in-store makeovers where you're limited to one brand. Here, hair and makeup artists – experts in their fields – will tailor your service to suit your exact complexion, needs and desires, across an array of brands. Pricing and package details to be announced shortly, but we're already counting down.

*2-4 Hans Crescent*

REFORMER PILATES STUDIO VITA has expanded to a six-storey studio at 31 Sloane Square. The home of the holistic wellness experience, you'll find personal training, Pilates studio with reformers, yoga and barre studios, and a treatment room dedicated to physiotherapy, osteopathy, sports massage and nutrition. VITA's training technique is all about controlled movements, high repetitions and low intensity core-centred exercises. Prepare to feel stronger and more flexible.







Sponsors of the  
Chelsea Awards



London's hottest spot for Yoga & Pilates

25 Heathmans Road London SW6 4TJ

020 3696 6050

[www.thehotspotyoga.co.uk](http://www.thehotspotyoga.co.uk)

**BESPOKE FACIALS AT KXU** are great for anyone looking to boost their skin. Aesthetic therapists combine deep cleansing, gentle extraction, lymphatic drainage massage, sculpting and lifting techniques on a case-by-case basis to ensure wonderful results. Unsure of which treatment to choose? Start with a complimentary 30-minute consultation to discuss concerns and create a treatment plan.



**ARE YOU READY FOR THE SLOANE SHAG?** The new hairdo at Neville on Pont Street celebrates the era when Jane Birkin and Bianca Jagger wafted down the King's Road; think layers, tapered ends and fuller crown. Soft yet edgy, Neville stylist Domenico Casella says it's best suited to curly hair but works for all. "On short hair, it will give a choppy look and works best on fine hair. For medium hair, it's perfect for rounder faces. For long hair, lots of layers work great for women with thick hair."



**HARRODS HAS OPENED** a revamped hair and beauty salon with new services and products. Come for the powder-pink walls, the conditioning bar, the hairdressing rotunda and a hair extension library. There are also transformative hair treatments from trichology to laser hair-removal, as well as facials, waxing, massages, body wraps, eyelash and brow treatments, nail art, plus beauty products spanning brands like Sarah Chapman and Philip Kingsley.



# Hepa Diet helps you to lose weight without feeling hungry

Hepa Diet is a new scientifically formulated 14-days meal plan that helps to lose belly fat and improves well-being.



THE DIET is based on a high-quality meal replacement shake with nutrients that lower blood cholesterol, improve metabolism, and maintain normal liver function.

## Easy to follow

During two weeks of the diet, you will have 2 Hepa shakes, 2 portions of vegetables, one high-protein meal, with addition of some oil, per day.



The number of vegetables in a serving should not exceed one 100 kcal (which equals a large bowl of salad), and a protein dish should fit into 280 kcal. This is a large portion of chicken or fish, or a huge pile shrimp, or a small steak.

## Lots of protein and fibre

Despite the calorie restriction, you are less likely to feel hungry since the diet is high in protein and fibre. One Hepa serving includes 26 g of protein to support muscles (this is more than in most protein shakes in the market) and 100% of the NRV vitamins and minerals. This means that you will not feel weak and dizzy. A healthy dose of nutrients will keep you during the day. You will feel energized enough to keep up with your exercise routine.

## Is it safe?

On Hepa Diet, you lose fat, not muscles. Your scales may show a few kilos less, but most importantly, fat from the belly and thighs should go, and you should start feeling better.

The diet triggers the mechanism of self-adjustment. The effects will last after you finish the diet. If you do everything correctly and stick to the follow-up plan, the chances of you facing a yo-yo effect, are minimized.

Hepa Diet was developed in Germany by Hardy Walle, MD, PhD, nutritionist with more than 20 years of experience and broad expertise in nutrition counselling. The diet is renowned worldwide for its premium quality, safety, and efficiency. Hepa shakes are made in Germany, too, and meet all quality standards.

Prospective studies run by scientists of the Health and Prevention Center (Vienna) and the Medical University of Vienna show that Hepa Diet therapy reduces liver fat, waist circumference, and BMI.

## Beneficial for skin and hair

Hepa shakes also have a beneficial effect on skin and hair conditions and improve overall well-being.

Hepa Diet is suitable for everyone over 18 if there are no medical contraindications. Not suitable if you are pregnant or breastfeeding.

If in doubt, consult your nutritionist first. You can find the ingredient list and nutrition information on the diet's website.

Contact: [hepadiet.com](http://hepadiet.com)

TRY HEPA DIET TODAY TO SEE VISIBLE RESULTS BY THE END OF THE YEAR. 15% OFF WITH A PROMO CODE SLSQD15 UNTIL 1 JANUARY.

Hepa Diet

# My Chelsea / Fake Greenall

**JAKE GREENALL** IS HOTEL MANAGER AT THE RECENTLY-OPENED BEAVERBROOK TOWN HOUSE ON SLOANE STREET. HE SHARES HIS FAVOURITE CHELSEA HOTSPOTS AND HOW HE UNWINDS

## WHAT'S YOUR FAVOURITE CHELSEA SHOP?

With a plethora of boutique stores at my fingertips here in Chelsea, it's hard to choose just one but Taschen bookstore in the Duke of York Square has to be my favourite way to while away an afternoon.

## WHERE IS YOUR FAVOURITE PLACE TO EAT IN CHELSEA?

Granger & Co on Pavilion Road is the perfect spot for a delicious light lunch and some people watching, whilst Elystan Street is my go-to for a special occasion.



## WHAT MAKES CHELSEA THE PERFECT LOCATION FOR BEAVERBROOK?

We are delighted to be part of such a fantastic community, with everything from shopping to dining to nightlife right on our doorstep. Lord



Beaverbrook didn't do anything by half; therefore it is the perfect fit for us to be located in the heart of such an iconic neighbourhood.

## WHAT'S YOUR FAVOURITE PART OF THE TOWN HOUSE?

The walls of Beaverbrook Town House are adorned with 540 prints, photographs and pieces of art, curated by our creative director Sir Frank Lowe. It's true that a picture speaks a thousand words and each of ours has a unique story to tell.

## WHAT IS YOUR FAVOURITE PART OF THE JOB?

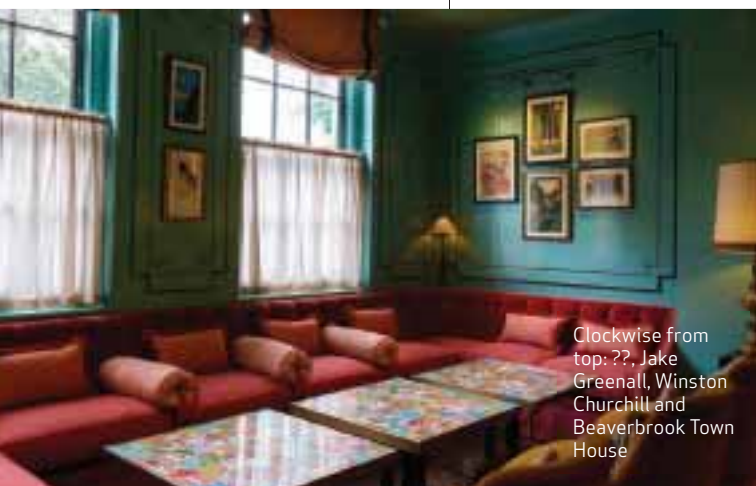
I've loved bringing our quintessential British charm from our Surrey estate into the city. Engaging with our guests and creating unforgettable experiences for them is the best part of the job.

## WHAT DO YOU DO FOR FUN?

My wife and I share a passion for food and drink and our favourite pastime is to explore London's food scene.

## FAVOURITE WORDS TO LIVE BY?

"A pessimist sees the difficulty in every opportunity, an optimist sees the opportunity in every difficulty." Lord Beaverbrook's great friend and house guest, Winston Churchill.



Clockwise from top: ??, Jake Greenall, Winston Churchill and Beaverbrook Town House







## *Cromwell Road, SW7 2JB*

**A Bright Newly Refurbished 700 sq ft TWO Bedroom flat on the second floor with views over the Majestic Natural History Museum**

Open plan reception with wood floor and fireplace incorporating a new kitchen with granite worktops and integrated appliances. Master bedroom with dressing area, Second Bedroom/Study/Dining Room, Stylish Bathroom, Laundry Cupboard with washer and dryer, Good Storage and Wood Floors throughout.

*Floorplan from [justin@proprium.co.uk](mailto:justin@proprium.co.uk)*

*Long Let Unfurnished £625 per week*

[www.proprium.co.uk](http://www.proprium.co.uk)  
020 7589 6298  
[justin@proprium.co.uk](mailto:justin@proprium.co.uk)



**PROPRIUM**  
Established 1974



# Neatsmith

BESPOKE FITTED WARDROBES, STUDIES & LIVING ROOM UNITS



544 KING'S ROAD, LONDON, SW10 0UB | 020 8017 3909

[WWW.NEATSMITH.CO.UK](http://WWW.NEATSMITH.CO.UK)