

# SLOANE SQUARE

ART \ CULTURE \ FASHION \ FOOD

SEPTEMBER / OCTOBER 2022

## CHELSEA'S VIBRANT AUTUMN

YINKA ILORI JOINS  
A SPARKLING SELECTION  
OF FESTIVALS AND  
EXHIBITIONS

### *Music makers*

KENSINGTON  
SYMPHONY  
ORCHESTRA

### *Fright night*

HORROR  
FILMS MADE  
LOCALLY

### *Ever green*

CHELSEA'S  
SUSTAINABILITY  
FESTIVAL






# YOKO

LONDON

EXCEPTIONAL PEARL JEWELLERY

NEW FLAGSHIP STORE  
NOW OPEN

6 SLOANE STREET | LONDON | SW1X 9LF

[www.yokolondon.com](http://www.yokolondon.com)  [yokolondonpearls](https://www.instagram.com/yokolondonpearls)



RATIO—VINCENT VAN DUYSSEN

# Molteni & C | Dada

MOLTENI&C | DADA FLAGSHIP STORES: LONDON SW3 2EP, 245-249 BROMPTON ROAD / LONDON WC2H 8JR, 199 SHAFTESBURY AVENUE

MOLTENI@HOME - VIRTUAL DESIGN CONSULTANCY AT MOLTENI.IT

# Contents / September-October 2022

## 8 CALENDAR

Essential events for your diary in September and October

## 16 NEWS

Keeping you in the know about what's going on in Chelsea

## 26 NATURE

The trail of tiny homes you won't want to miss

## 27 SUSTAINABILITY

A new festival celebrating all things green

## 28 FASHION NEWS

Welcoming a host of new stores to the area

## 32 BOOK CLUB

Book-lovers pick their top historical reads

## 34 HISTORY

Spying and secret agents in Chelsea

## 36 LGBTQ+

Celebrating Chelsea's queer pioneers



41



68



62



## COVER

Colour Palace, East Dulwich Picture Gallery by Yinka Ilori whose exhibition starts at the Design Museum on September 15.

Image: Andy Stagg.

Page 9

## 41 ART NEWS

Tiffany Anna's colourful creations

## 44 ART

The London Design Festival is back with a bang

## 46 ART

Combining care and creativity at a local hospital

## 48 CULTURE

The Agatha Christie novel inspired by 1960s Chelsea

## 50 MUSIC

The renowned local orchestra that is one of Britain's best

# Contents

## 52 CINEMA

A host of horror films with local links

## 57 TRENDING

Get autumn-ready with our knitwear guide

## 62 TOP TEN

The best high-tech buys for babies

## 65 FOOD NEWS

The Ukrainian restaurant offering a taste of home

## 68 FOOD

The Pavilion Road hotspot that is serious about seafood

## 70 CHARITY

How the K+C Foundation is helping people build better lives

## 72 LOCAL HERO

The classical singer relishing her role at the Royal Hospital

## 74 LOCAL HERO

How charity Glass Door offers vital help to the homeless

# 29



## 76 SOCIAL

Toasting 150 years of Tiffany in London

## 78 BEAUTY NEWS

Hair repair, sleep solutions, skin treatments and more

## 82 MY CHELSEA

Why The Fold founder Polly McMaster chose Chelsea

# 78



### SLOANE SQUARE

is produced for Cadogan by

#### Publishing Business

Berkeley Square House  
22 Berkeley Square  
London W1J 6BD  
020 7259 1053

#### Cadogan

10 Duke of York Square  
London SW3 4LY  
cadogan.co.uk

#### Editor

Alice Cairns  
020 7259 1058  
alice@pubbiz.com

#### Deputy editor

Will Moffitt

#### Writer

Sophia Charalambous

#### Sub-editor

Kate White

#### Designer

Andy Lowe

#### Advertisements

Bridget Rodricks  
020 7259 1059  
bridget@pubbiz.com

Richard Taylor  
07423 099 277  
richard@pubbiz.com

#### Publisher

Adrian Day  
020 7259 1053  
adrian@pubbiz.com



This product is made of material from well-managed FSC®-certified forests and from recycled materials.

All inks vegetable based. Our printers are certified to ISO 14001 Environmental Management.

This magazine is fully recyclable, when you have finished reading it please put it in your paper recycling bin.



Publishing Business is a member of the Professional Publishers Association and observes the PPA Code of Publishing Practice.



@SloaneSquareMag  
@DOYSQ  
@SloaneStreetSW1  
@Pavilion\_road



@SloaneStreetSW1  
@PavilionRoad  
@dukeofyorksquare  
@SloaneSquareMag  
@Kingsroad.london



# Poliform

# Calendar

## FROM SEPTEMBER 24

### HALLYU! THE KOREAN WAVE

This exhibition will explore the influence of Korean culture on the world at large, from music and cinema to fashion, fandom and sculpture. Explore an immersive recreation of black comedy thriller *Parasite's* bathroom set, browse costumes and props from dramas like *Squid Game*, and marvel at monumental Korean artworks.

**V&A, Cromwell Road**



## ONGOING

### ROAD TO RECOVERY

This free exhibition follows the process of rehabilitation after mental or physical injury. Improvements in battlefield care have seen soldiers surviving injuries that would once have proved fatal, pushing the boundaries of modern medicine with the invention of new treatments.

**National Army Museum,  
Royal Hospital Road**

# Events diary

SEPTEMBER  
& OCTOBER





**OCTOBER 31**

**LEVISON WOOD: THE ART OF EXPLORATION**

Join author and explorer Levison Wood as he shares stories from his lifetime of travel. From the front-lines of Afghanistan to the Congo, the Nile and the Himalayas, he will teach you how to apply the art of travel to your everyday life, allowing you to have adventures both great and small.

**Cadogan Hall,  
5 Sloane Terrace**



**FROM SEPTEMBER 15**

**YINKA ILORI**

The London-based artist/designer creates a colourful world through installations, patterns and graphics for a joyful and playful experience inspired by the African fabrics of his childhood.

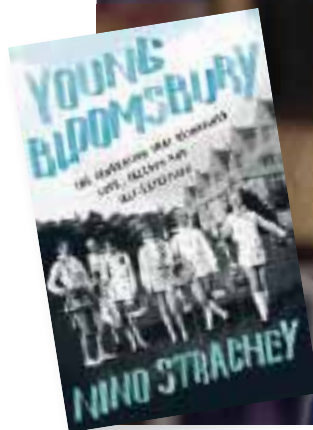
**Design Museum,  
224-238 Kensington High Street**

**OCTOBER 18**

**SOWETO GOSPEL CHOIR**

Catch the Grammy award-winning Soweto Gospel Choir on their first UK tour in 10 years. The choir performed at Nelson Mandela's 90th birthday concert in Hyde Park, and have shared the stage with the likes of U2, Aretha Franklin and Stevie Wonder. Their latest tour will celebrate South Africa's quest for democracy and freedom.

**Cadogan Hall, 5 Sloane Terrace**



**SEPTEMBER 14**

**GOVERNOR'S LECTURE SERIES**

Nino Strachey will be visiting the Royal Hospital to discuss her latest book, *Young Bloomsbury*, which tells the story of the bright young things who reinvigorated the Bloomsbury Group. The evening will take place in the Grade I listed State Apartments, and will include a drinks reception.

**The Royal Hospital, Royal Hospital Road**



## SEPTEMBER 17-25

### CHELSEA HISTORY FESTIVAL

The Chelsea History Festival is back for a jam-packed fourth year. This partnership between three Chelsea institutions – the National Army Museum, the Royal Hospital and the Chelsea Physic Garden and sponsored by Cadogan – aims to bring the past to life through a programme of talks, performances and interactive events. Don't miss our pick of the highlights....

### A HISTORY OF UKRAINE

On September 17, journalist and author Anna Reid delivers a timely talk on one thousand years of Ukrainian history. Then on September 21, General Sir Adrian Bradshaw will give a talk on the crisis in Ukraine, giving his unique perspective on the ongoing conflict.

### WAR HORSE: THE CONCERT

On September 22, celebrate the 40th anniversary of Michael Morpurgo's War Horse. Michael will read an abridged version of the novel in the historic Wren Chapel, accompanied by music from the much-loved National Theatre production. This is the exclusive launch of a concert which will embark on a nationwide tour in the new year.



### HISTORY STREET

From September 24-25, an immersive experience will see Burton Court transported into the past. Expert living historians will create scenes from the medieval period all the way to the modern day, with opportunities to take part in a sword school and to meet the King's Troop Royal Horse Artillery.

### CHELSEA PHYSIC GARDEN

On the weekend of September 24-25, Chelsea Physic Garden will open its doors free of charge. Families will be able to try pond dipping, planting and storytelling, before enjoying seasonal refreshments at the Physic Garden Café.

### ROCK 'N' ROLL CHELSEA

Take a guided tour of Chelsea's place in rock 'n' roll history on September 21. Expert guide Richard Porter will show you the King's Road hangouts where the Sex Pistols were formed, the hotel used by The Beatles as their London base, and influential boutiques like Mary Quant's Bazaar.

[Chelseahistoryfestival.com](http://Chelseahistoryfestival.com)





FOR ALL YOUR TOMORROWS...



AURIENS

CHELSEA

CALL 0204 549 8000 OR VISIT [AURIENS.COM](http://AURIENS.COM)

# Calendar



## SEPTEMBER 14

### TINY TROOPERS

These sensory sessions are perfect for children aged two to four, allowing them to sing, play and create. Each month has a new theme, with September's session inspired by army transport.

**National Army Museum,  
Royal Hospital Road**



## SEPTEMBER 12-16

### INTRODUCTION TO BOTANICAL PAINTING

Did you know that the Chelsea Physic Garden is home to the Florilegium Society, the oldest botanical painting society in the UK? Find out more with a week-long introductory course to this precise and scientific form of art.

**Chelsea Physic Garden,  
66 Royal Hospital Road**

## SEPTEMBER 19 – OCTOBER 22

### JEWS: IN THEIR OWN WORDS

Journalist Jonathan Freedland has created a theatrical inquiry into antisemitism and prejudice using verbatim interviews with the likes of Howard Jacobson, Simon Schama and Luciana Berger. On October 12 he'll take part in a post-show Q&A.

**Royal Court Theatre,  
Sloane Square**





**Poggenpohl Wigmore** | 118 Wigmore Street | London W1U 3RT  
020 7224 1986 | wigmore@poggenpohl.com

**Poggenpohl Chelsea** | 265-267 Fulham Road | London SW3 6HY  
020 7730 7927 | chelsea@poggenpohl.com

**Poggenpohl Hampstead** | 477 - 481 Finchley Road | London NW3 6HS  
020 7794 7801 | hampstead@poggenpohl.com

KITCHEN ARCHITECTURE  
SINCE 1892  
POGGENPOHL.COM

## Calendar

### UNTIL MAY 2023

#### SOKARI DOUGLAS CAMP

A monumental sculptural group by British-Nigerian artist Sokari Douglas Camp is on display at the V&A. Douglas Camp considers the history of the African diaspora in her work, including issues of power, slavery and gender.

V&A Museum, Cromwell Road



### OCTOBER 31

#### HALLOWEEN AT THE NATURAL HISTORY MUSEUM

Fancy dress is encouraged at this spooky late-night Halloween celebration. As darkness falls, look out for towering dino skeletons, sinister specimens and shadowy creatures lurking around every corner.

Natural History Museum,  
Cromwell Road

### SEPTEMBER 30

#### MILOŠ: HOMAGE TO SEGOVIA

See one of the world's most celebrated classical guitarists in concert. Miloš will pay homage to the great guitar legend Andrés Segovia, weaving together a selection of original pieces and familiar classics that reflect the versatility of the guitar.

Cadogan Hall, 5 Sloane Terrace





---

EATON HOUSE BELGRAVIA

---

Celebrating 125 years of excellence

# Potential is Our Passion



Since 1897, Eaton House Belgravia, our academically outstanding single sex school for boys, has achieved exceptional academic results. Between 2010-2022 some 24% of our seven and eight-year-olds have left for Westminster, St Paul's and King's College, Wimbledon, with many more offers to these and other fine schools. This achievement is all the more remarkable as we offer a non-selective entry for boys at ages 2+ and 4+.

Wellbeing is at the core of this well-rounded education. Each child is supported as an individual so that they can flourish both academically and socially. Finding the potential in each child is our passion.

---

**New open house dates available now,  
visit [bookopen.day](https://www.bookopen.day) to book.**

Speak to our Head of Admissions, Miss Sam Feilding, on 020 3917 5050, or visit [www.eatonhouseschools.com](https://www.eatonhouseschools.com) for more information.

---

\*Non-selective at 2+ and 4+ entry.

# Calendar

## SEPTEMBER 8-18

### ARTS & CRAFTS FESTIVAL 2022

Holy Trinity church was dubbed “the cathedral of the Arts and Crafts movement” by John Betjeman, and boasts interiors by some of the finest craftsmen of the 19th century. This year, its eight-day Arts & Crafts festival has a “CraftLife” theme and will celebrate artists and craftspeople from across the UK. Kicking off with a jazz-age cocktail party, the event will feature dance, film, lectures, workshops, worship and more.

**Holy Trinity, Sloane Street**



## SEPTEMBER 5 – DECEMBER 16

### PAINT POTS: STEM FOR TWO TO THREE YEARS

Children aged between two and three can delve into science, technology, engineering and maths at these hands-on sessions. From exploring light and shadow with puppets to experimenting with magnets, they will learn in a fun and creative environment. Each class will end with an interactive movement and music session.

**St Mary the Boltons church hall, the Boltons**



## SEPTEMBER 15-18

### FIRSTS: LONDON'S RARE BOOK FAIR

Celebrate the 65th anniversary of one of the world's most prestigious rare book fairs. This year it is themed around banned books, recognising the 100th anniversary of the publication of *Ulysses*. Highlights will include a signed copy of *Lady Chatterley's Lover*.

**Saatchi Gallery, Duke of York Square**



# Now is the time for...



## **We are open, enquire today.**

Enjoy the vibrancy of Kensington with idyllic parks and cultural venues all on your doorstep.  
Spacious one, two and three-bedroom apartments for sale.  
A new kind of later living designed around you.

—  
Prices range from £1,115,000 to £3,000,000\*.

24/7 concierge  
Maria G's Italian restaurant and bar  
Landscaped gardens  
Health & Wellbeing  
Range of amenities including  
a private cinema



Coe House, 4 Warwick Lane  
London W14 8FN

**Contact us to find out more  
or book your personal  
appointment.**

**Call 020 3839 8553  
riverstoneliving.com**

\* Other fees apply. Prices correct at time of printing for selected apartments. Image of the Riverstone Kensington garden.

# News / September

CHELSEA FOOTBALLERS Millie Bright and Fran Kirby were both starters in the Lioness team that beat Germany in the UEFA Women's Euro 2022 final. Cheered on by 87,192 spectators at Wembley, the match broke records by achieving the highest attendance of any Euros fixture in history.



A PLAQUE honouring Jewish war heroine Vera May Atkins has been installed at Nell Gwynn House on Sloane Avenue, where she lived during World War Two.

Vera fled anti-semitism in Romania before becoming a British intelligence officer. After the war, she tirelessly tracked down missing agents and intelligence service personnel, determined to bring recognition to her peers and closure to their families. Thanks to her work, many courageous women received official recognition from the British government, including a posthumous George Cross awarded to fellow spies Violette Szabo and Noor Inayat Khan.

Vera's plaque was erected by the UK branch of the Jewish American Society for Historic Preservation in partnership with AJEX.



ARTWORKS CREATED by Chelsea's amateur and professional artists have gone on display at the Civic Gallery at Kensington Town Hall. The special exhibition showcases 15 works by local creatives, including Sarah Lawton, art teacher at Hill House School, and Camilla Broadbent, a lifetime member of the Chelsea Arts Club. Each piece responds to the recent platinum jubilee, reflecting on moments of personal or historical significance during the Queen's 70-year reign.





DUKE OF YORK SQUARE has been named London's favourite lifestyle street at the 2022 London Lifestyle Awards, taking the crown for the second time. The square beat tough competition from Carnaby Street, Seven Dials and many more, and was commended for its iconic status as a destination for shoppers, diners and locals alike. Elsewhere, Cinquecento Pizzeria (1 Cale Street) was named casual dining restaurant of the year.



CHELSEA RECENTLY enjoyed its very first "dog day". Held on August 27 in celebration of International Dog Day in one of London's most dog-friendly neighbourhoods, the festival included a dog-themed market at Duke of York Square, in-store activity from over 50 brands and the likes of dog-friendly cinema screenings and 'pawtrait' artists. Money raised went to Dogs Trust.



CADOGAN has released an annual progress update on "Chelsea 2030", its stewardship strategy designed to build a sustainable future for the area. The report found that significant progress has been made towards each of the 12 targets, which include goals for air quality, waste and wellbeing. Since 2019, there has been a 10 per cent decrease in total emissions, a 12 per cent increase in urban greening factor and a seven per cent increase in the estate's operational recycling rate. It's a positive step in an ambitious plan to emit net zero carbon by 2030.

THE CADOGAN ARMS has launched a new wedding package offer, perfect for pre- and post-wedding celebrations. The happy couple can pick from options including cocktails and canapés in the bar, a private meal in the dining room, or exclusive hire of the entire venue. It's a great choice for couples marrying at nearby Chelsea Old Town Hall, where stars including Hugh Grant, Judy Garland and Bobby Moore tied the knot.  
*298 King's Road*



THE NATURAL HISTORY MUSEUM has begun fundraising for its Urban Nature Project, which will see its grounds transformed into a free-to-visit green space in the heart of London.

The five-acre site will include outdoor galleries, an enormous bronze diplodocus, a learning centre, a sunken walkway and a range of habitats for wildlife. For £50, you can sponsor a square metre of the garden; for £250, you can engrave a name on the jetty railings; and for £10,000, you can engrave a name on a standalone bench. *For more options and to donate, visit [nhm.ac.uk](http://nhm.ac.uk)*

BARBARA CHARONE has been named the new director of Chelsea FC. Her new book, *Access All Areas*, tells the story of her career as a legendary pop publicist, living in Sloane Street and working with the likes of Madonna, Depeche Mode, Robert Plant, Foo Fighters, Mark Ronson and more. A Chelsea season ticket holder for some 40 years, Barbara was also involved in the creation of the 1997 FA cup anthem *Blue Day*.





## QUOTE PENDANTS

Gold or silver  
with the quote  
of your choice

Cassandra Goad  
147 Sloane Street  
London SW1X 9BZ  
Tel: 020 7730 2202

[cassandragoad.com](http://cassandragoad.com)

PLANS TO TURN SLOANE SQUARE into an outdoor dining hub have been approved for the next decade. May to October will see the square transformed into a destination for al fresco dining, while from November to April it will host a range of pop-up activities such as Christmas markets and winter fetes. With plans approved until 2033, Chelsea's cafe culture looks set to thrive.



Giles Semper, Head of Place at Cadogan said: "Chelsea is buzzing - it's fantastic to see footfall bounce back to higher levels than we were seeing pre-pandemic, and opportunities to activate public spaces like this will ensure it stays that way.

Sloane Square is at the heart of the neighbourhood and it feels right that it can now be animated with inspiring, accessible activity that contributes to the community."



RESIDENTS of Kensington and Chelsea may be eligible for a visit from a "green doctor", who can offer free advice on how to save energy. The service is open to people who are 65 and over, on a low income or experiencing a long-term health condition or disability.

Other council programmes include the "try before you buy" bike scheme, which allows anyone who lives, works or studies in the borough to rent a new bike for a monthly fee that can be claimed back if they choose to buy. [rbkc.gov.uk](http://rbkc.gov.uk)



LUXURY German kitchen brand Poggenpohl has opened a new flagship store on Fulham Road. Expect three floors of displays, as well as on-site interior architects who will develop bespoke solutions for your kitchen. *265-267 Fulham Road*



# sachi: Happiness in Japanese.

Join us for a celebration of Japanese food, drinks and culture inspired by its regions.

Sachi is now open for lunch, dinner and late-night cocktails.



Bookings:  
[sachi@pantehcnicon.com](mailto:sachi@pantehcnicon.com)  
+44 (0) 207 034 5405

**PANTECHNICON**

19 Motcomb St. London SW1X 8LB

# Beer's all round



MARK AS SCROOGE AND (BELOW) LADY BRACKNELL

Mark Beer is one of the UK's leading disabled actors, and the first disabled actor to play a regular leading role on TV. This October, he's coming to Chelsea Theatre to perform in Alan Bennett's *Talking Heads*



"WHEN I STARTED OUT, there were only a handful of disabled actors. I auditioned at LAMDA and RADA and all the main drama schools at 16, and they all told me that although I had ability, they were not accessible to me as someone with a disability.

"Things have improved a great deal in the 38 years I've been acting, but we're still at the point where if I'm cast in a television series or a film, I'm always the young man who was hit by a car or injured in a skiing accident. Because my cerebral palsy isn't severe, people often think that I wasn't born with my disability, but that I've acquired it. That's fine – I'll take the money and I'll do the job, and I'll do it well, but my main objective in my career is not to be fitted into a box. I don't want to just play the token disabled person.

"Luckily, theatre is much more welcoming and open and I've been able to play a huge variety of roles on stage. This year alone I've played Lady Bracknell in *The Importance of Being Earnest*, then I'll be performing in *Talking Heads* in Chelsea, and in November I'll be playing Scrooge in *A Christmas Carol*. You couldn't get much more diverse – and that's all thanks to how open the world of theatre is.

"I adore *Talking Heads*. It's beautifully written, a joy to read or listen to and I can perform my role entirely from an armchair, so it is very easy physically for me to play. It can also be very hard to find a theatre that is completely wheelchair accessible – especially in London, where theatres are very old – but Chelsea Theatre has had a refurb and is now completely accessible. It makes things much easier for me, and I hope this won't be the last time I get to work there!"  
*See Mark in Talking Heads at Chelsea Theatre from October 6-8 and 13-15. [chelseatheatre.org.uk](http://chelseatheatre.org.uk)*





## *Bishops Wharf House SW11 4NP*

**Smart Two Bedroom Two bathroom flat on Third floor of this modern development on Parkgate Road, just over Albert Bridge and moments from Battersea Park.**

Entrance : Reception Room with doors onto full width Balcony : Kitchen hatched into reception with all appliances : Master Bedroom with en-suite shower room : Second Bedroom : Full Bathroom : Secure Parking : Separate Storage room: Lift : Porter

*Floorplan from [justin@proprium.co.uk](mailto:justin@proprium.co.uk)*

*Lease to September 2994 £810,000*

[www.proprium.co.uk](http://www.proprium.co.uk)  
020 7589 6298  
[justin@proprium.co.uk](mailto:justin@proprium.co.uk)



**PROPRIUM**  
Established 1974

# Nature / Trail

IN RECENT MONTHS, eagle-eyed shoppers may have noticed some surprising additions to Pavilion Road and Duke of York Square. Hidden on doorsteps, tucked between railings, wedged into tree forks and concealed in planters are 20 tiny homes, each created by a leading architect or designer.

These curious structures are part of Nature's Architects, a free, family-friendly trail that takes its inspiration from the natural world. Each of the miniature homes is based on the intricate built structures found in nature, from kingfisher nests and termite cities to spiders' webs, clam shells and coral.

The trail is a collaboration between Cadogan and the Museum of Architecture, and is designed to get us thinking about different ways of building our homes and cities, including techniques that could be more sustainable and eco-friendly.

Kate Neale, Head of Sustainability at Cadogan, said: "Nature's Architects is a fascinating project that will hopefully



DISCOVER A FAMILY-FRIENDLY TRAIL THAT'S INSPIRED BY THE BEAUTY (AND ENGINEERING PROWESS) OF NATURE



inspire people of all ages to think a bit differently about nature, and what we can learn from plants and animals of all sizes. The natural world is incredibly adaptive and can inspire us with new ways to tackle many of the global challenges we're facing. The recent heatwave is a stark reminder of the real impacts of climate change, making it more important than ever that we embrace genuinely sustainable design like the kinds of progressive, pioneering architecture on display here."

Families can download a printable map to follow, as well as taking part in online activities and tasks by scanning a QR code found on each structure. The Nature's Architects trail is the perfect afternoon out for curious minds, and is bound to prompt conversations about our complex relationship with the wonderful world around us.

*Until September 25;*  
*[schoolforcreativethinkers.com](http://schoolforcreativethinkers.com)*

# Fashion / Sustainability

**SEPTEMBER 17**  
DESIGNER PICNIC AND  
SUSTAINABILITY  
SHOWCASE  
FOR LONDON  
FASHION WEEK  
10-4pm

AS PART OF  
LONDON FASHION  
WEEK'S 'Citywide  
Celebration', Chelsea will  
be hosting a 'Designer  
Picnic' on the green  
opposite the Saatchi Gallery.

Curated by Orsola de  
Castro (co-founder of Fashion  
Revolution), the Designer  
Picnic will be a chance to meet  
and get hands on inspiration  
from four designers who are  
changing the way fashion is  
made and worn.

Several designer sessions  
will take place throughout  
the day, completely free but  
booking is necessary. Orsola  
comments, "At a time when  
looking for solutions is  
imperative to mitigate climate  
change, we are here to remind  
you that the road to circularity  
demands  
longevity,



and that your  
journey starts  
with your  
wardrobe.

Our picnic will  
provide an inspiring,  
joyful and meaningful way to  
begin. Loved clothes last!"

Other highlights during  
the day include a 'Stitch and  
Bitch' session at Duke of York  
Square, a single-use plastic  
free Food Market featuring  
sustainable food pioneers and  
brand activations from many  
neighbourhood shops and  
restaurants, including Nike  
and Lampoo.

Look out for a pop-up  
sustainability 'kiosk' from  
Allbirds, 'Stitch It Don't  
Ditch It' sessions at Brora, a  
recycling service at Monica  
Vinader, sustainable fashion  
shows at Peter Jones, quilting  
workshops from The Fashion  
School, tips and techniques  
from The Handbag Clinic.  
Chelsea, in particular the  
King's Road, has long been a  
home for pioneering fashion  
creatives, this is an opportunity  
to champion both today's and  
those of the future.

*For further information  
visit [kingsroad.co.uk](http://kingsroad.co.uk)*

## THE SUSTAINABILITY SHOWCASE FEATURES

**Colechi:** A collective of curators  
taking the London fashion scene  
by storm. For this special picnic,  
they will enact their legendary  
knitting club – all are invited to  
join, beginners to experts, for a  
knit and yarn (BYOK – bring your  
own knit – or borrow – but be  
there).

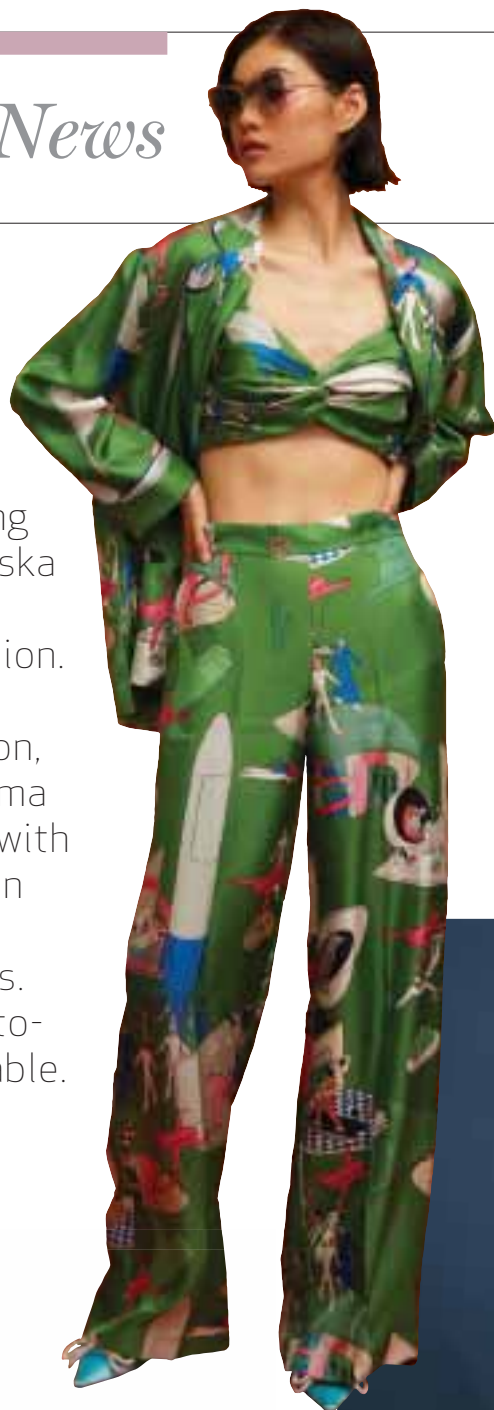
**Katie Jones:** Crocheter  
extraordinaire, Katie invites you  
to join her colourful world where  
you can watch her in action or  
crochet your own granny square,  
in hot anticipation of her book,  
*Hip to be Square*, out in October.

**Georgia Keeling:** Part of The  
Seam London's excellent team  
of seamstresses, Georgia's  
speciality is visible darning –  
be inspired by her meticulous  
darned 'galaxies'.

**Revival LDN:** Bringing denim  
upcycling to a whole new level,  
Revival LDN will show you how  
to customise and transform old  
denim into amazing new outfits,  
giving your jeans multiple lives if  
you care and repair.

## Fashion / News

CHELSEA-BASED DESIGNER Lena McCroary has teamed up with young artist Izabela Olesinska to create a range of pop-art printed fashion. Part of Lena's New Cosmic Age collection, these luxurious pyjama suits are decorated with motifs that reflect on space travel and the future of life on Mars. Each piece is made-to-order and customisable. [sannelondon.com](http://sannelondon.com)



### SEPTEMBER 21 – OCTOBER 26 MENSWEAR AND MASCULINITIES ONLINE COURSE

To tie in with its Fashioning Masculinities exhibition, the V&A is holding a month-long online course examining male dress. Led by cultural historian Dr Benjamin Wild, the course will analyse the social and political pressures that shape menswear. Lectures will take in everything from signet rings to Speedos, via suits, shoes, short shorts and more.

*Cromwell Road*



**DID YOU KNOW** that a typical mobile phone contains 0.2g of gold? Chelsea-based jeweller Eliza Walter founded Lylie in 2017, using salvaged gold and silver from electronic waste to create beautiful pieces of recycled jewellery. Her latest offering is the Canine collection, a selection of dog cufflinks lovingly sculpted by British artisans. Choose from breeds including a beagle, cocker spaniel, greyhound and more. [lylies.com](http://lylies.com)





YOKO LONDON, the luxury jeweller specialising in pearls, has opened a new flagship store on Sloane Street.

The store will span 4,000 square feet across two floors, making it one of the largest pearl jewellery stores in the world.

The space will also operate as a pearl atelier, with the brand's team of experts working closely with clients to make bespoke creations.

*6 Sloane Street*



OLIVIA VON HALLE has launched the Giardino collection, a glamorous tribute to sunny holidays on the Italian Riviera. The hero print is a lush landscape inspired by the terraces of the Amalfi coast, which is guaranteed to transport you to a bygone summer. As part of the collection, the brand has also released an updated version of its iconic Contessa slipper, which features plush ostrich feather pom-poms.

*190 Pavilion Road*



MANOLO BLAHNIK has won a 22-year legal battle to use his name in China. China has a "first to file" trademark system, which meant that Chinese businessman Fang Yuzhou, who filed a trademark in 1999, owned the right to use the Manolo Blahnik name. China's highest court has now cancelled the trademark, allowing the British brand to expand to one of the world's fastest growing luxury markets.

*49-51 Old Church Street*

ACCLAIMED FASHION DESIGNER Emilia Wickstead, renowned for dressing some of the world's most glamorous women, has launched a brand new flagship doubling the size of her prestigious Sloane Street location. The fashion designer worked closely with London-based architecture and interior design studio Nenmar to ensure that the 370 square metre boutique matched the brands' timeless and elegant style. Paying homage to Italian rationalism Nenmar's inspiration arose from the rational simplicity and functionality of the Italian architecture of the 1920-1940's.  
*152-153 Sloane Street*



EMILIA WICKSTEAD NEW FLAGSHIP STORE. IMAGE © PAUL RIDDLE



THE NOVA DRESS AND MATCHING TROUSERS BY EMILIA WICKSTEAD

LOOKING FOR a quirky party idea? The Fashion School has you covered. Experts will guide you and six or more friends as you craft your own fashion accessories, with options including Liberty pyjama shorts, tote bags, handbags, or other accessories of your choice. It's the perfect activity for a children's birthday, hen-do, baby shower or team building day... Just remember to bring your own cake!  
*224a King's Road*



SUSTAINABLE FOOTWEAR BRAND Allbirds has opened a new store on King's Road.

The fashion brand makes shoes from natural materials such as merino wool and eucalyptus fibre.

Claire Barber, Asset Management Director, Cadogan, said: "Allbirds will fit perfectly with the growing community of sustainably driven shops and concepts in Chelsea – a truly innovative retail brand who I'm sure will cleverly use this physical space to connect with the powerful local neighbourhood here. We very much look forward to welcoming them to the King's Road."

*54 King's Road*

# FRESHLY BAKED ON PAVILION ROAD



Find our infamous Bread Ahead doughnuts, pastries, breads and pizza daily.

Learn to bake with our expert bakers in our Chelsea Bakery School.

[www.breadahead.com](http://www.breadahead.com)

**BREAD  
AHEAD**  
BAKERY

# Literature / Bookworm



**JUSTIN MACIEJEWSKI, DIRECTOR GENERAL AT THE NATIONAL ARMY MUSEUM**

*The Spy Who Loved: The Secrets and Lives of Christine Granville* by Clare Mulley

The story of Christine Granville (real name Krystyna Skarbek) who was Britain's first female special agent of World War Two and the longest serving of all Britain's wartime women agents is inspiring and fascinating. Her courage and guile combined with both tenderness and ruthlessness makes her such an extraordinary person. I could not put the book down except when I needed to reflect and allow certain parts of Christine's amazing story to really sink in.



## BOOK CLUB

# Historical reads

LOCAL BOOKWORMS PICK THEIR FAVOURITE WORKS OF HISTORICAL FICTION AND NON-FICTION



**GEOFFREY MATTHEWS, CEO AND SECRETARY OF CHELSEA ARTS CLUB**

*An Evil Cradling* by Brian Keenan  
Keenan's wise and wonderful book is an account of

the time he spent as a terrorist hostage in late-80s Lebanon. He became headline news when he was kidnapped by fundamentalist Shi'ite militiamen and held in the suburbs of Beirut for the next four-and-a-half years. Above all this book tells the story of the writer's inner journey during that ordeal. What he found deep inside himself was remarkable, and provides a profound and inspiring lesson about what it is to be fully human.



**ARABELLA DAVIES, HISTORY TEACHER AT CHRIST CHURCH AND HOLY TRINITY SCHOOLS**

*Black and British: An Illustrated History* by David Olusoga  
This is the children's version of *Black and British*, the adult book that was written some years ago. It tells the

story of black people and the contribution they have made to British society since the Roman conquest of Britain in AD 43. As Olusoga says, this was the story that was never told when we were at school. It is an important element of our country's past for all of us, and it helps us to make sense of the country we live in today. A thoroughly interesting and informative read for children and adults alike.







**BARBARA WHILDS,  
CHELSEA PENSIONER**

*Six Wives* by David Starkey  
I'm into the history of the Tudors, and this is the book I come back to time and again. It covers a period that changed England forever. The manners and etiquette of the age, the court gossip and intrigue – it's so fascinating. Starkey studies the varied characters of the queens, all interesting in their own right. He speaks compassionately of their follies. Their husband, King Henry, was a highly intelligent and educated man but one who put his own desires above all else. He was brutal in enforcing his will. This story has as much violence, mystery, sex and thrills as any blockbuster, and it's true!



**NEIL DEWEY,  
CHAUFFEUR AT  
AURIENS**

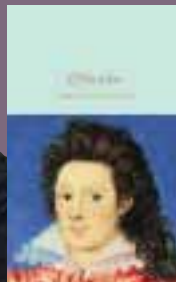
*A History of London* by Stephen Inwood  
This is a big one, 1,000 pages long! It was given to me by a resident at Auriens, who is a doctor of history. I've always had a fascination with history ever since I was a kid, especially the history of London. I like to know about where I am, and I was taught as a small boy to constantly look up, because that's where the history is. Working in hospitality, my favourite part of this book is about the growth of London's tourism industry, with its five-star hotels and restaurants.



**ROSALIND MCKEVER, CO-CURATOR OF  
FASHIONING MASCULINITIES: THE ART OF  
MENSWEAR AT THE V&A**

*Orlando: A Biography* by Virginia Woolf

The main character romps through history from the time of Queen Elizabeth I to Woolf's own present day in 1928. On the way we get an intimate look at their experiences of life and love. This is all the more fascinating because they change gender about halfway through and have to adjust to living, and dressing, as a woman. Woolf's biting wit exposes gender inequalities through history, sartorial and otherwise, and parodies the way historians and biographers tell stories. I find it especially beautiful that a book with such a playful approach to time continues to resonate with readers nearly a century later.



# History / Espionage

COMMONLY KNOWN AS ONE OF LONDON'S MOST CREATIVE AND CONVIVIAL AREAS, CHELSEA IS NOT THE FIRST PLACE THAT SPRINGS TO MIND WHEN IT COMES TO HIGH STAKES ESPIONAGE. HOWEVER, AS TOUR GUIDE GUY FAIRBANK WILL REVEAL AT THIS YEAR'S CHELSEA HISTORY FESTIVAL, IT HAS A MURKY, HIDDEN HISTORY

STROLL DOWN CHELSEA'S prominent King's Road to number 138 and you will find a Santander with the bank's signature red and white typeface emblazoned on the curved building's grey exterior. It's the kind of run-of-the-mill branch housed in towns and cities across the UK, but this one has a particularly dark history.

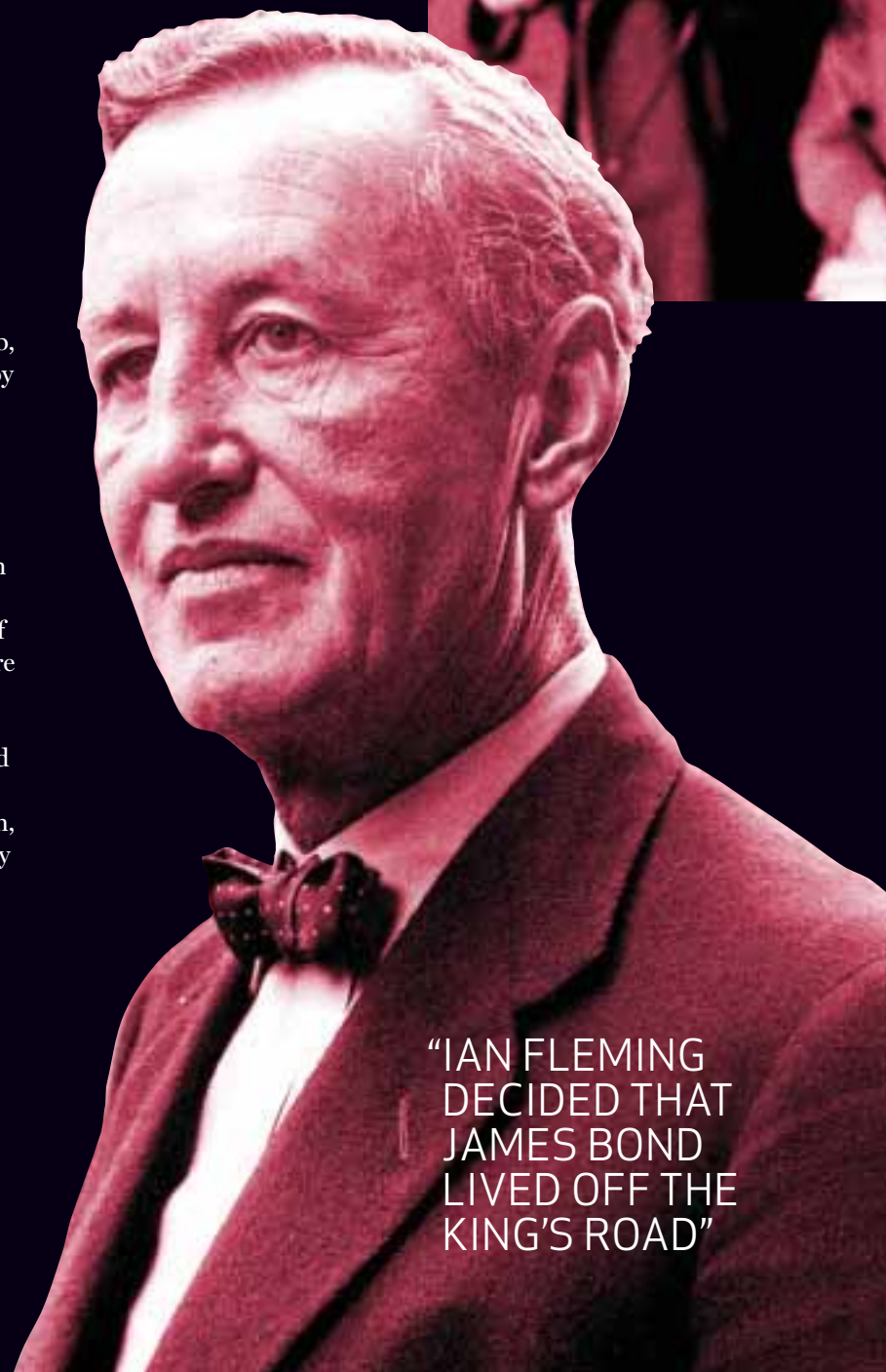
Formerly the site of the Markham Arms pub, it was here during the 1950s that the Soviet spy Kim Philby met fellow conspirator Anthony Blunt to reestablish contact after members of the infamous Cambridge spy ring had fled to the Soviet Union.

Formerly a resident of Chelsea's 18 Carlyle Square, Philby's name is still synonymous with dark acts of treachery. His spilling of national intelligence secrets to the KGB cost the lives of hundreds of British agents, most of whom were consequently imprisoned, tortured and killed.

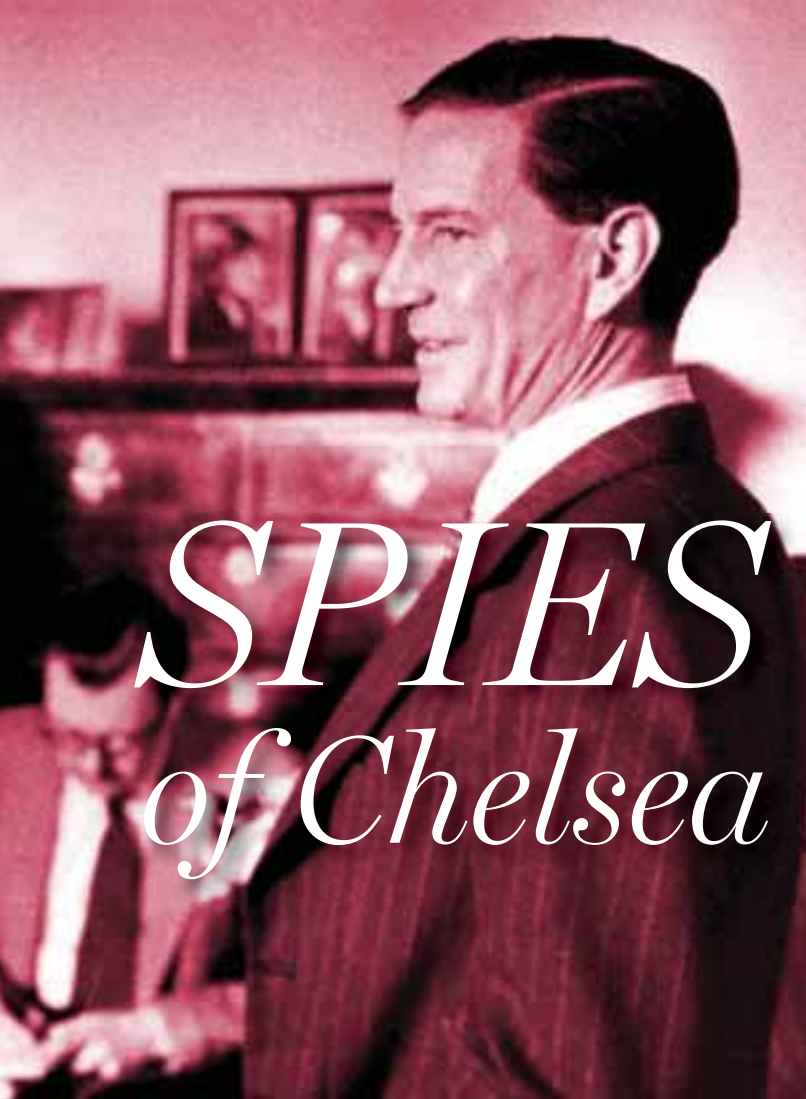
These real-life tales of espionage – along with the fictional spy stories they have inspired – reveal a history of clandestine activity in Chelsea that lurks beneath its otherwise stylish, convivial exterior. It is this shadowy underbelly that piqued Guy Fairbank's interest.

As an award-winning Blue Badge and City of London guide, Guy is particularly drawn to Chelsea, having worked for several years on Flood Street and Draycott Avenue, leading walks in SW3 both privately and for the Chelsea Society. This September, to mark the Chelsea History Festival, he will lead a guided tour that seeks to uncover the cloak-and-dagger world of espionage and intelligence on the seemingly quiet streets of Chelsea.

"I did some walks for friends and for



"IAN FLEMING DECIDED THAT JAMES BOND LIVED OFF THE KING'S ROAD"



Kim Philby

# SPIES of Chelsea

the Chelsea Society, and there are a few connections to spying,” Guy says. “Some were fictional. For example, Ian Fleming decided that James Bond lived off the King’s Road. And then John le Carré’s protagonist George Smiley also lived off there.”

It was writer William Boyd who solved the elusive mystery of precisely where Fleming’s iconic spy holed up when he wasn’t saving the world. While researching for his own Bond novel Boyd noticed a crucial line in *Thunderball* that seems to reveal 007’s bachelor pad. Bond pulls out of his square on to the King’s Road before driving “fast up Sloane Street and into the [Hyde] Park”. According to Boyd that puts him at Chelsea’s very own Wellington Square.

This makes sense given Fleming’s own affinity with Chelsea. The writer lived in a red-bricked apartment in Carlyle Mansions, formerly the home of TS Eliot and Henry James. It was at this address that he conceived the Bond novels with his first, *Casino Royale*, written in 1953.

Guy found other leads by accident. On Chelsea’s Old Church Street, for instance, there’s a blue plaque honouring Judy

Ian Fleming

Campbell, mother of the singer and actress Jane Birkin.

Campbell’s husband and Jane’s father David Birkin was a Royal Navy lieutenant-commander and a World War Two spy who worked as a navigator taking British spies across the Channel to France, while also rescuing stranded airmen and escaped prisoners of war.

Despite being half blind and prone to seasickness Birkin was a brilliant navigator, leading spies in boats to covert locations on moonless nights. He revealed his exploits years later, recalling one particular tale where his team dropped Dutch resistance operative Peter Tazelaar off in a dinner jacket to help fool the Germans.

“They had this idea to get this agent across to Holland so he had a dinner suit under his dry suit, and arrived near the shore,” Guy explains. “He just wandered around the beach in his dinner jacket looking completely drunk. The Germans paid no attention to him because he just seemed like he had been to a very good party.”

Other tales told on this winding tour are more macabre. In Duke of York Square, for instance, German spy Josef Jakobs underwent a military tribunal in August 1941. After two days Jakobs was found guilty of spying and sentenced to death in the Tower of London, where he remains the last person to have been executed.

Asked why Chelsea seems to have such a rich history of espionage both on and off the page, Guy is uncertain. “I’ve been thinking about that. Obviously it’s a nice place to live and it’s quiet. Honestly, I don’t have an answer,” he says. Those who do would surely never tell.



*Chelsea History Festival runs from September 17-25. Guy will lead Spies of Chelsea on September 18*



# Chelsea *PRIDE*

## FROM OSCAR WILDE TO QUENTIN CRISP, ALICE CAIRNS EXPLORES CHELSEA'S PLACE IN LGBTQ+ HISTORY

WITH ITS REPUTATION as a bohemian enclave, a creative quarter and a home to artists and eccentrics, it's little wonder that Chelsea has had a role to play in queer history. Take a stroll through its streets and you're bound to find an address where lesbian, gay and bisexual residents played out dramas of defiance, liberation and love, creating communities and forging relationships in the face of discrimination.

Perhaps the most famous of Chelsea's LGBT residents was Oscar Wilde, the writer and wit who lived at 16 (now 34) Tite Street. It was here in Chelsea's fashionable artists' quarter that Wilde lived with his wife and his two sons, entertaining the likes of WB Yeats, Ellen Terry, the Prince of Wales and Lillie Langtry – as well as his lover, Lord Alfred Douglas.

It was also at Tite Street that the Marquess of Queensberry, Lord Alfred's father, made an unannounced visit to accuse Wilde of corrupting his son. Wilde, who had been the toast of London after the triumphant premieres of *The Importance of Being Earnest* and *An Ideal Husband* in January and February of 1895, decided to sue the Marquess for libel – a disastrous course of action that resulted in his arrest for “gross indecency” in April of that year.

This climactic moment took place at another Chelsea address: the Cadogan Hotel on Sloane Street. Concerned friends begged Wilde to escape to France, where attitudes to homosexuality were more lenient, but he refused. After learning his arrest was imminent, Wilde is reported to have turned very grey, but to have insisted that “I

## History / LGBTQ+



shall stay and do my sentence, whatever it is." At 10 past six on April 6, a waiter followed by two detectives entered Wilde's bedroom, where a half-packed suitcase lay on the bed, and took him to Bow Street. A bankruptcy sale of Wilde's possessions took place at his Tite Street home a few weeks later, in which his treasure trove of books, artworks, furniture and personal letters were put up for sale – raising a sum that was still insufficient to pay off his debts.

While Oscar Wilde's story ended in tragedy, a number of his contemporaries were able to live lives of quiet contentment. Artists Charles Shannon and Charles Ricketts lived together for 50 years – spending 1888-94 at 2 The Vale, King's Road. Although they never publicly identified as gay, there's no doubt that they dedicated their lives to one another from the moment they met at art school. They worked in adjoining studios and collected art together, with Ricketts taking on commercial work as an illustrator to support Shannon's career as a painter.

During their time together, Shannon sometimes engaged in relationships with women, and Ricketts wrote diary entries confiding his fears that his companion would marry. However, the couple continued to cohabit until Ricketts' death in 1931, and were steadfast friends to Oscar Wilde, visiting him in prison and assisting him financially after his release.

Another contemporary of Wilde was Bram Stoker, author of *Dracula*. He lived at several addresses in Chelsea, including 27 Cheyne Walk and 18 St Leonard's Terrace. Stoker was not openly gay, but his life has invited speculation from scholars.

His marriage to Florence Balcombe – whose former suitor was none other than Oscar Wilde – was rumoured to be sexless, and at the age of 24, Stoker wrote to Walt Whitman calling him a "wife to my soul".

Parts of *Dracula* were written during Oscar Wilde's trial, and many

literary scholars have identified currents of homoeroticism in the novel, centring around the sexually ambiguous figure of the bloodsucking Count.

One Chelsea resident whose sexuality was far from ambiguous was artist's model Quentin Crisp. Despite enduring abuse and regular beatings, Crisp was openly gay, wearing makeup, dyeing his hair and dressing flamboyantly in the 1930s and beyond. In 1940 he moved to a flat at 129 Beaufort Street in Chelsea, where he lived for 41 years. A notoriously indifferent housekeeper, Crisp claimed "there is no need to do any housework. After four years, the dirt doesn't get any worse."

Crisp was ostracised for his refusal to hide his sexuality – but even in the 40s and 50s, there were some spaces where those in the know could express themselves without fear of persecution. The Gigolo club at 328 King's Road was frequented by gay men, while behind a green door at 239 King's Road was Gateways, a women-only club that became a thriving hotspot for lesbians

### VISITORS WERE EXPECTED TO ADHERE TO RIGID RULES – INCLUDING IDENTIFYING AS EITHER "BUTCH" OR "FEMME"



GATEWAYS CLUB, 1955



QUENTIN CRISP

and bisexuals. Visitors required a code to enter, and were expected to adhere to rigid rules – including identifying as either "butch" (with Brylcreemed hair and a shirt and tie), or "femme" (skirts and blouses).

As the 70s and 80s progressed and Gateways' clientele became more emancipated and politically conscious, Gina Cerrato, who owned the club with her husband Ted, insisted that all clients leave their politics at the door to prevent heated debates about feminism and the newly founded Gay Liberation Front. It was also Gina who refused Rolling Stones frontman Mick Jagger entry to the club – even when he offered to wear a dress. By the time Gateways closed in 1985 it had become the world's longest running lesbian club.

Today, Chelsea is home to residents of all sexualities and gender identities. Football fans can join Chelsea Pride, Chelsea FC's official LGBTQ+ supporters' group, while in 2012 the Chelsea Arts Club decorated its facade with murals of Quentin Crisp, Oscar Wilde and more for its Night of a Thousand Queens ball. Even Chelsea Physic Garden recently held a tour inspired by queer botany, exploring same-sex reproduction in nature. It's a culture of acceptance and equality that wouldn't have been possible without Chelsea's queer pioneers.



# DRAYCOTT

NURSING & CARE



## Bespoke nursing & care in the comfort of your own home

From one hour visits to live-in care

Our nurse-led care enables clients to remain in their own home whilst being cared for by professional and highly trained Carers and Registered Nurses.

Call +44 (0)20 7351 7171  
or visit [draycottnursing.co.uk](https://www.draycottnursing.co.uk)



THE CHELSEA ANTIQUES & FINE ART FAIR

2ND - 6TH NOVEMBER 2022

INVITATION ONLY PREVIEW ON THE 1ST

CHELSEA OLD TOWN HALL,  
KING'S ROAD, SW3 5EE

SIGN UP FOR YOUR  
COMPLIMENTARY TICKETS  
[www.chelseaantiquesfair.co.uk](http://www.chelseaantiquesfair.co.uk)

OFFICIAL FAIR PARTNERS

ALTIDO®   28-50  
WINE WORKSHOP & KITCHEN  
ENGLAND

FOR THE FULL LIST OF EXHIBITORS VISIT [WWW.CHELSEAANTIQUESFAIR.CO.UK](http://WWW.CHELSEAANTIQUESFAIR.CO.UK)



Certified  
**B**  
Corporation

COMMITTED TO EXCELLENCE

Tiger Recruitment is B Corp Certified, which means that we've been verified as meeting B Lab's high standards for social and environmental impact.

Call us on +44 20 7917 1801 about your next hire.

B Corp is synonymous with our own brand values: **excellence, positivity, integrity, dedication** and **gravitas**. These guide every approach to matching exceptional support staff to top businesses and private individuals globally.

FIERCELY DISTINCTIVE | BUSINESS SUPPORT | PRIVATE | HOSPITALITY | HR | TECHNOLOGY | FINANCE  
[tiger-recruitment.com](http://tiger-recruitment.com)

**TIGER**  
Recruitment



# Art / News



**UNTIL SEPTEMBER 28**

**Tiffany Anna: TA X LDN**

Self-taught artist Tiffany Anna found her passion for painting during the pandemic and has been turning heads with her colour-drenched art. Head to the King's Road to view her new collection of over 125 NFT works, curated in the form of a virtual reality metaverse, alongside 40 large-scale physical paintings and prints of brightly coloured animals. Visitors can travel into the metaverse to view and buy one of these limited-edition pieces.

**340 King's Road**

**SEPTEMBER 14-30**

**Clare Granger**

Clare Granger's work captures people she met and observed in Colombia, Burma and India. Working on the spot with pencil and watercolour, she then depicted select scenes with oil on canvas back in her studio. Her art evokes a sense of adventure and empathy expressed through a distinctive colour palette.

**2 Park Walk**



**FROM OCTOBER 6**

**Science Fiction: Voyage to the Edge of Imagination**

By blending scientific principles with skilfully rendered storylines, science fiction offers both escapist fun and ominous visions of imagined futures. This interactive voyage at the Science Museum uncovers hidden gems from sci-fi culture while exploring how science can shape our future.

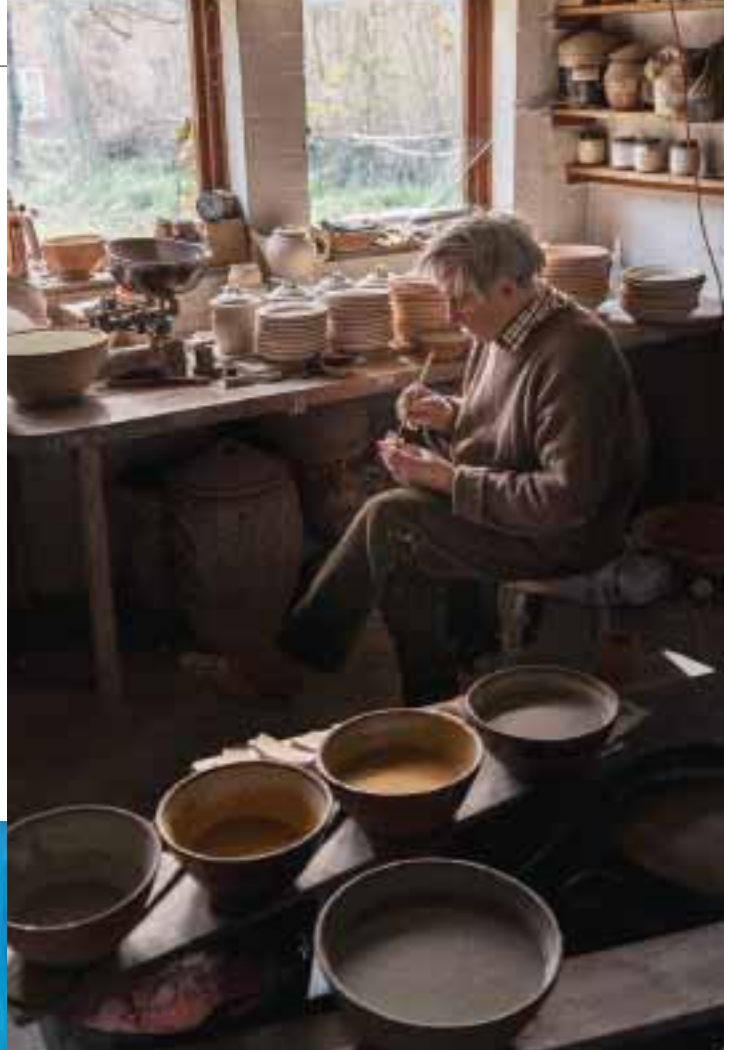
**Exhibition Road**

**SEPTEMBER 29 – OCTOBER 2**

**British Art Fair**

Hosted at Saatchi Gallery, this homage to modern British art has showcased old and new masters since 1988. This year's show promises some exciting developments, including Solo Contemporary – an installation of 10 contemporary galleries curated by Zavier Ellis, each showcasing the work of one emerging British artist.

**Duke of York Square**



**UNTIL SEPTEMBER 26**

**Richard Batterham: Studio Potter**

Raised in Dorset, Richard Batterham's brand of thrown stoneware was influenced by the orient and medieval and vernacular pottery. His finest achievement was his ability to create practical and distinctive items that could be admired and used in equal measure. As this retrospective at the V&A shows, his extensive body of work put post-war pottery on the map.

**Cromwell Road**



A new book from Taschen showcases the work of German artist Georg Baselitz. Growing up during World War Two, Baselitz channelled his feelings of being born into a "destroyed order" by experimenting with unconventional perspectives and fractured spaces. The book costs £1,500 and includes over 400 images of the artist's work.

**12 Duke of York Square**





# BRITISH ART FAIR

[BRITISHARTFAIR.CO.UK](http://BRITISHARTFAIR.CO.UK)

## Modern and Contemporary British Art

29 September – 2 October 2022  
Saatchi Gallery, London



# Design for lives

WITH AN ARRAY OF INNOVATIVE INSTALLATIONS AND EYE-CATCHING SHOWS, THE LONDON DESIGN FESTIVAL RETURNS TO THE V&A THIS SEPTEMBER, WRITES WILL MOFFITT



Whale in the Room by Design Earth

NOW IN ITS 13TH YEAR as the official festival hub, the V&A's iconic spaces will be transformed by an extraordinary collection of specially commissioned installations and displays by contemporary designers from across the globe for the London Design Festival, which runs from September 17-25.

Centred on the theme of transformation, this year's designers have approached the topic from myriad angles: from the transformation of molecules and material to the regeneration of the planet.

First up is R for Repair: London x Singapore, a project led by DesignSingapore Council and the National Design Centre in Singapore, which sees broken household objects creatively renewed by Singaporean and UK designers.

In Material Experiments, Canadian artist Omer Arbel transforms the John Madejski Garden into an immersive glass-blowing studio, with Arbel's iridescent fragile sculpture *113* taking centre stage. During the nine-day performance, common copper and glass antiquities procured from flea markets

and vintage shops will be returned to their raw materials and used to create new artefacts.

Meanwhile, Plasticity will see a monumental sculpture designed by Niccolo Casas, 3D-printed by Nagami and made with marine plastic waste intercepted by Parley for the Oceans. The project explores the possibility of giving harmful waste material new uses.

Told through an animated film by Design Earth, a research practice founded by Rania Ghosn and El Hadi Jazairiy in 2010, *Whale in the Room* imagines what would happen if the blue whale skeleton at the Natural History Museum came alive and swam in the Thames to demand climate action.

Next up is Not David! a project by all-female interdisciplinary design collective Xcessive Aesthetics, which explores data and alternate realities and aims to propose a new mode of reclaiming public space, reconsidering who or what is given space within the museum context.

The V&A will also host the Global Design Forum, the festival's thought leadership programme that will bring together creative leaders to exchange ideas and solutions for some of the most pressing issues of our time.



R for Repair: image © Zukera film production



Awakening by Gary James McQueen and Simon Emmett

# THE DECORATIVE FAIR

**AUTUMN 2022**  
4 to 9 October  
Battersea Park  
London

**Antiques, Design and Art for Interior Decoration**

Book tickets at [decorativefair.com](https://decorativefair.com) or pay at door  
Free entry from 4pm daily | @decorativefair



# *Creative* solutions

TRYSTAN HAWKINS is evangelical about the power of art. Whether it's a finely crafted painting offering precious moments of escapism and reflection; or a delicately rendered piece of music, Chelsea and Westminster Hospital's patient environment director wants it to make a difference to every patient who steps into this facility.

As my tour around the hospital confirms, the former head of the Royal West of England Academy in Bristol has transformed the Fulham Road institution into an art gallery. The collection displayed inside is made up of over 2,000 artworks, many of which are bespoke commissions, and the hospital is also a research centre dedicated to studying how art and design choices impact patient health and wellbeing.

"I think what we have here is quite unusual," Trystan says. "We have outstanding clinicians and an openness to working in different ways that is unusual and rare. Creating work that hopefully benefits people who are often at some of the lowest points of their life is so powerful."

Previously director of Wysing Arts Centre, which was selected as a model of excellence by Arts Council England, Trystan began his current role in 2013. Investigating the relationship

between medicine and the arts has been his calling since he collaborated with the artist Jordan Baseman and a heart surgeon on a project centred in Royal Papworth Hospital.

Shocked by the poor quality of lighting and lack of visual stimuli he encountered, Trystan began thinking about how medical facilities could be better designed to be more connected with the outside world and the community.

In his current role he has spent nearly a decade collaborating with painters, sculptors, filmmakers and musicians, from global names including the painter Andy Burgess and the composer Brian Eno to local artists who work for extended periods on site. In 2019, for instance, drawer-in-residence Anouk Mercier created 50 individual portraits of female nurses from a 1919 photograph to document women's contribution to hospital life.

Moreover, while works are donated or selected for a particular use, Trystan prefers to work with practitioners in-house so that they can be inspired by and ground their projects in an immersive and authentic understanding of day-to-day hospital life.

As he is only too happy to admit, the hospital's definition of "art" is a broad one. It could mean



FOR ALMOST A DECADE TRYSTAN HAWKINS HAS LED CHELSEA AND WESTMINSTER HOSPITAL'S ART AND DESIGN PROGRAMME, COLLABORATING WITH ARTISTS AND MUSICIANS TO CREATE STIMULATING WORK SPECIFICALLY CRAFTED TO ENHANCE THE PATIENT EXPERIENCE. HE TELLS WILL MOFFITT HOW THE HEALING POWER OF A GOOD PICTURE AND CLEVER DESIGN CAN IMPROVE CLINICAL OUTCOMES

getting an artist to spend months sketching in an ICU ward or curating 60 hours of film content that runs on screens in patient bed areas. It also extends to design and wellbeing more generally. Recently Trystan and his team have been interested in digital technologies that create holographic representations of plants, birds and butterflies.

These ambitious in-house projects are complemented by the hospital's philosophy that small acts of creativity can provide huge therapeutic benefits.

"Every day there is creative activity happening on the wards," Trystan says. "We work very closely with the staff in terms of how it can enhance what might be happening anyway. For example, on our stroke ward, they've got a musician coming in and they're using instruments that might promote motor skills in the hands. We also have clinically trained art therapists who will come in and do work as well."

This passionate desire to fund and drive ambitious creative projects and improve patients' wellbeing has its share of challenges too.

"Money is always a challenge. If we're offering a new service you need to consider how it might be commissioned and who's going to pay for it," Trystan says. "Once it opens, the charity might kickstart it, but we need to make sure that it is sustainable."

"The challenging part of my job is distilling down the real world elements that we can't control, while not losing the quality of what underlies the work," he adds. "Generally, it works, but we don't always get it right. I've learned from that as well."

Those obstacles have not stopped Chelsea and Westminster Hospital striving to fund more art projects and design better wards. Work is already underway to devise a new patient pathway around adolescent mental health and a treatment centre for day-case surgery.

"It's about asking how we can optimise the journey through that environment, but also potentially increase the throughput of patients," Trystan says.

"If you can see more people, that's going to reduce waiting list times. Ultimately, we want the outcomes for patients to be better."



"EVERY DAY THERE IS CREATIVE ACTIVITY HAPPENING ON THE WARDS"



All images courtesy of CW+

# Culture / Agatha Christie



EVERY ISSUE, WE'LL BE EXPLORING A CULTURAL ARTEFACT THAT WAS INSPIRED BY CHELSEA AND ITS SURROUNDINGS. IN THIS EDITION, ALICE CAIRNS READS AGATHA CHRISTIE'S *THIRD GIRL*

## What is it?

*Third Girl* is a 1966 novel by queen of crime Agatha Christie, starring her beloved Belgian detective Hercule Poirot.

## What's it about?

Poirot receives a visit from a distraught young woman who is convinced that she has committed a murder. His subsequent investigation takes him on a whirlwind tour of Chelsea's youth culture, from the fashionable King's Road to dingy artists' studios populated by mods, rockers, beatniks and long-haired posers...

## Why Chelsea?

In 1966, Chelsea was the epicentre of the Swinging Sixties. As a result, it's the perfect setting for a book about the conflict between youth and age, complete with recreational drugs, ever-changing hairstyles and characters clad in velvet waistcoats,

# Cultural artefact

skin-tight trousers and skimpy skirts. At the start of *Third Girl*, a terrified young Chelsea-dweller rejects Poirot's services on the basis that "nobody told me you were so old". Her doubts are short-lived, of course – and by the end of the book, Poirot's little grey cells have triumphed again.

## How was it received?

Reviews were mixed. Most critics were baffled by the 76-year-old Christie's decision to write about the hip Chelsea set, with crime writer Robert Barnard calling it "one of Christie's more embarrassing attempts to haul herself abreast of the Swinging Sixties". More

favourable was critic Maurice Richardson, who was sufficiently convinced to note in the *Observer* that "after this, I shan't be a bit surprised to see [Agatha Christie] wearing a mini skirt".

## It's best read...

A murder mystery demands to be read in the warmth of one of Chelsea's many cosy pubs. The Surprise, the Cadogan Arms and the Chelsea Pig are all less than a 10-minute walk from Swan Court, the apartment building on Chelsea Manor Street where Christie lived and which inspired the novel.

*If there's a cultural artefact you'd like us to explore, drop us an email at [alice@pubbiz.com](mailto:alice@pubbiz.com)*



# Separation without Heartache. It is possible.

THE EMOTIONAL, PRACTICAL AND FINANCIAL IMPLICATIONS OF ANY DIVORCE CAN BE OVERWHELMING. FOR MOST SEPARATING COUPLES THE CONCERNS REMAIN THE SAME: THE NEED FOR PRIVACY, AND THE DESIRE TO AVOID UNNECESSARY CONFLICT. SIMON DONALD, LONDON PARTNER AT CRIPPS, OFFERS HIS ADVICE.



FILMS AND TV DRAMAS WOULD HAVE us believe that every divorce comes with melodrama and bitterness. In practice, this is far from reality. The introduction in April 2022 of 'no fault' divorces, based on a statement of the irretrievable breakdown of the marriage, removed the need for evidence of 'conduct' or 'separation' to be presented to the court when dissolving a marriage. Long gone are the days where wealthy couples need to conduct their separation in court. The court system can, on occasion, be a blunt instrument for resolving such disputes. A more delicate approach serves best in unpicking the intricacies of complex tax arrangements, off shore assets, company structures and inherited wealth.

Increasingly couples look to anticipate the potential breakdown of the relationship by managing that possibility through pre-nuptial and post-nuptial agreements. While not legally binding in the courts of England and Wales, these agreements offer an opportunity for couples to identify what assets should be shared between them.

Such agreements, if carefully considered and drafted, can inform a judge on how best to settle any sharing of a couple's wealth on divorce, recognising the parties' wishes to retain inherited wealth, or addressing unmatched financial contributions to the marriage. With many people entering into second marriages, these agreements provide the opportunity to preserve assets meant to benefit children from previous relationships. They bring much-valued confidence and the potential to avoid acrimonious separations and court disputes.

Understandably, not everyone feels comfortable discussing divorce and financial settlements at the same time as planning their wedding. Even where there is no pre-nuptial agreement, there are still a range of options which avoid court involvement.

Alternative dispute resolution (ADR) has seen a significant rise in popularity. Private arbitration works particularly well, as it offers couples privacy, a timetable for resolving matters that they control, and a swifter resolution. The judiciary continues to encourage couples to explore arbitration in an

effort to remove pressure from the family court system.

Alternatively, a separating couple could achieve an outcome based on agreement and conciliation, if they have good advisers working to find the best solution for them.

**If you are considering a pre or post-nuptial agreement, or need advice on any aspect of family law, contact me for discreet and independent advice on +44 (0)20 7591 3320 or email [simon.donald@cripps.co.uk](mailto:simon.donald@cripps.co.uk)**



**Cripps**

# Music / KSO

IN 1956, CONDUCTOR LESLIE HEAD founded an orchestra with a difference. Members of the Kensington Symphony Orchestra rehearsed diligently just off Sloane Square (before retiring to one of Chelsea's many pubs). They performed in prestigious venues to the very highest standard. They created exciting programmes and received rave reviews. In spite of this, KSO was composed not of professional musicians, but of exceptional amateurs, who gave up their free time to hone their craft.

More than 60 years later KSO is still flourishing. It performs six concerts a year, including regular visits to Cadogan Hall (where its last appearance included a piano cameo by singer Myleene Klass). Many of its members are Chelsea residents, including cellist Kim Polman, who lives just off the King's Road.

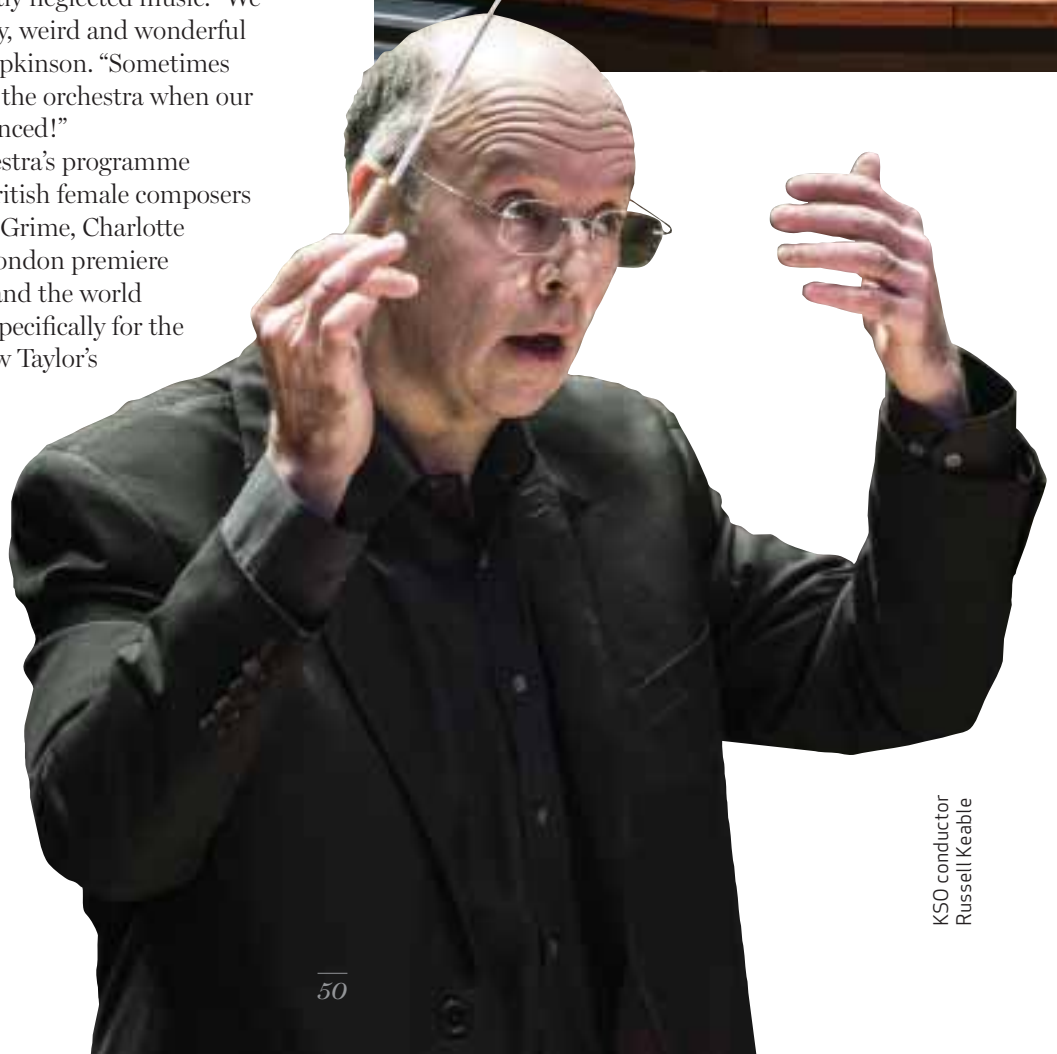
"It's such an amazing orchestra to be part of," she says. "When you get 80 musicians all aligned and playing together, there's such power and such depth, and such a range of emotions and sounds that we can make. It's really just an astonishing experience."

KSO is known for its willingness to perform unusual, ambitious or unjustly neglected music. "We programme all sorts of wacky, weird and wonderful things," says violinist Ria Hopkinson. "Sometimes you hear audible gasps from the orchestra when our next piece of music is announced!"

Highlights from the orchestra's programme include pieces by as many British female composers as possible, including Helen Grime, Charlotte Bray and Anna Clyne; the London premiere of Dvorak's opera *Dimitrij*; and the world premieres of pieces written specifically for the orchestra, including Matthew Taylor's *Symphony No 4*.

"I've spoken to members of professional orchestras who have told me that they wish they could play what we play," says Ria. "They have to keep their audience happy, whereas we have the freedom to devise our own programmes and to experiment."

KSO's much-loved music director and conductor is Russell Keable, who has been with the orchestra for 40 years this



KSO conductor  
Russell Keable



# ORCHESTRAL *manoeuvres*

**THE KENSINGTON SYMPHONY ORCHESTRA IS OFTEN CALLED THE BEST NON-PROFESSIONAL ORCHESTRA IN THE UK. ALICE CAIRNS FINDS OUT MORE**

September. “The better the orchestra is, the better the conductor has to be,” says Russell. “My role is to be endlessly encouraging and persuading, to have a very clear vision of what I’m expecting and to draw the orchestra along with me – especially on a Thursday evening when they’re all a bit tired and would quite like to go straight to the pub!”

He’s clear that although the orchestra is composed of amateur musicians, there’s nothing amateur about the sound they produce.

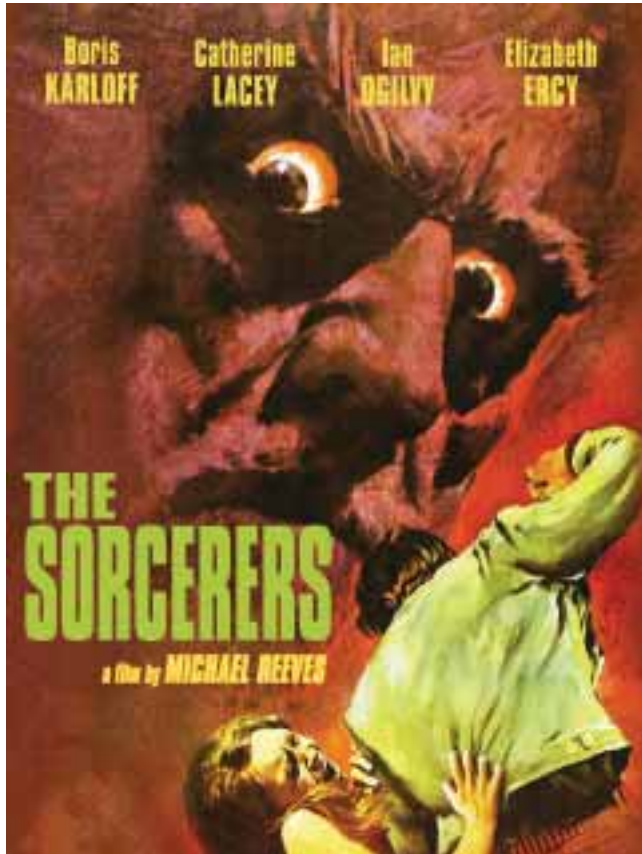
“The UK is a country that has nurtured amateur talent in music since before the 18th century, much more so than continental Europe,” Russell explains. “But even so, the word amateur has come to mean something less than top notch. That is not the case with KSO. I’ve conducted amateur orchestras

all around the country, and KSO is singular and exceptional.”

In order to perform the requisite six concerts a year, every member of KSO is required to put in a huge amount of work, by attending weekly rehearsals and learning and practising complex pieces of music in their free time. “These are high-powered professionals in their own spheres, so giving up the time to learn how to play the first horn part of a Mahler symphony is no small ask,” says Russell. The fact that they all choose to do so is testament to the important role that the orchestra plays in their lives – both as a creative outlet and as a community.

“KSO is a very, very special thing,” Russell says. “When we first played together after the pandemic, many people were in tears. It was just so incredibly moving, and showed how very much people had missed playing together. It’s a vitally important part of our spiritual life as much as anything else.”

Ria agrees: “Some people have met their partners at KSO, and some people come from well outside London – including a flautist who for a little while was commuting from Yorkshire every Thursday night. It’s just that special!”



Dracula AD 1972

# Chelsea's HORROR films

JUST IN TIME FOR HALLOWEEN, HORROR WRITER AND HISTORIAN LAUREN JANE BARNETT TAKES ALICE CAIRNS ON A SPINE-TINGLING TOUR OF CHELSEA





FOG ROLLING IN OFF THE RIVER, ghostly apparitions in graveyards and cloaked figures in dark alleyways... London has long captured our imagination as the perfect setting for spooky stories. But can the same really be said for Chelsea?

The answer, according to horror historian Lauren Jane Barnett, is an emphatic yes. While living in Duke of York Square, Lauren began to investigate London's unique place in the history of cinema. Her book *Death Lines: Walking London Through Horror Cinema* will be published on October 18, and explores eight areas of London through the lens of horror films.

"Chelsea was where I started, because not many people know about its place in horror cinema," she says. "In fact, Chelsea is the setting for some brilliant scary films."

When Lauren began researching Chelsea's horror movies, she was surprised to find that the majority were made between 1967 and 1976.

"When I thought about it, it all made sense," she explains. "These films were responding to the liberation and the danger of the Swinging Sixties – and Chelsea was at the centre of that."

"One example is a 1967 film called *The Sorcerers*, which very few people know. It's about

an elderly therapist and his wife, who discover a way to hypnotise a very cool, very hip young man so that they can live through him, and can eventually control what he does.

"The film was made by Michael Reeves, who was in his 20s at that time. He saw how his contemporaries didn't want to be part of the world or part of a community, but wanted to burn really bright and really fast. That knowledge scared him, and so he made this amazing horror film as a response to the fear he felt for his generation. Chelsea, as the centre of rebellious youth culture, was the natural setting."

*The Sorcerers*, like so many of Lauren's favourite horror films, is about far more than cheap thrills and gore. In fact, Lauren argues that the very best horror films have a unique power to probe our social and political anxieties, and to provide a cathartic outlet for feelings of powerlessness or uncertainty. Her own love of horror developed after she experienced a devastating personal tragedy, which left her struggling to sleep.

"My brother killed my parents, and afterwards I suffered from insomnia. That was why I started watching horror films, because it helped me to confront my fears in a safe and contained way. I always say to my friends that there's a horror film out there for everyone, because there's something that will speak to you and make you say, 'I really needed that.' It can be really nice to feel fear, knowing that at the end everything will turn out OK."

The trick, according to Lauren, is to find the right kind of horror film for you.

"There are so many different kinds of horror movies. There are wonderful, eerie ghost stories; there are monster movies like *Jaws*; there's even a list of some 7,000 horror movies without a single drop of blood. That's because there are so many ways to get you thinking about what you're afraid of.

"Whether it's a rom-com horror, a comedy horror, or whatever it is, I think the only person who truly doesn't like a single horror film is somebody who doesn't like movies at all."

Of course, the sheer number of horror films didn't make Lauren's job any easier. While writing her book, she discovered that as of 2021, some 146 horror films have been set in London – more than any other city in the world. "I



A Clockwork Orange

think it's because London has so much," Lauren explains.

"We have horror history, in the form of Dracula and Jack the Ripper. We have one of the oldest underground systems in the world, and some of the newest skyscrapers. We have open spaces like Piccadilly, and tight enclosed alleyways, and then the river Thames, with its unseen depths and its sense of secrecy."

And while movies set in haunted houses or moonlit forests teach us to fear isolation, London's horror films seem to have a different message – that what's really worthy of terror is the presence of other people. In Chelsea, that may be the gang of Mary Quant-clad hipsters intent on raising the dead in *Dracula AD 1972*, or the carefree King's Road partygoers whose liberal attitudes and short skirts drive Dorian Gray to suicide in the 1970 film of the same name.

"Chelsea is a wonderful place for a horror-lover, as long as you're in the know," Lauren says. "I love sitting in the McDonald's on the King's Road, knowing that it featured in *A Clockwork Orange*, or that the Chelsea Physic Garden had a sinister role to play in *Jack the Ripper*."

"Incidentally, Chelsea is also home to the place I'd most like to shelter during a zombie apocalypse: the Saatchi Gallery. It's fortified, you've got tons of space, and Partridges is just across the road. What more could you want!"

#### CHELSEA'S UNMISSABLE HORROR FILMS

**THEATRE OF BLOOD.** "This is perfect for anyone who likes comedy horror, or who loves Shakespeare. It's about a group of theatre critics who keep dying in ways that show up in Shakespeare plots. It's really clever, but it's also really funny because Vincent Price [who plays the lead] is so camp, almost John Waters-level camp. For flamboyance and crazy plots, it's an amazing one."

**DRACULA AD 1972.** "This is one of those horror movies that has everything you hope for and expect from the genre. Dracula shows up, and he has this young, cool, almost beatnik minion with a black turtleneck, and he's seducing all these ladies and then killing them, and it's cheesy in a really fun way. Get yourself a cup of cocoa and watch it at Halloween. Plus the costumes are amazing, because this is Chelsea after all!"



Theatre of Blood

# Care Beyond Compare at Loveday



Loveday Abbey Road's stunning garden, Loveday Kensington Bar & Lounge and Bedroom Suite

## Bespoke Care

Loveday & Co is London's only private member's club for seniors offering tailored, compassionate care and world-class hospitality for those with a wide range of needs - from dementia and Parkinson's, to more complex nursing needs or respite care. Their expert team provides holistic, discreet care, and they are passionate about enhancing the lives of their members as well as their families.

## Beautiful Locations

Loveday has three beautiful properties for you to choose from in Kensington, Chelsea and Abbey Road, with a fourth property in Notting Hill opening later in the year.

## Luxury Living

The properties are as lavish and opulent as any private members club. Loveday's unmatched concierge services reflect those of a five star hotel, making a member's stay feel like a luxurious getaway rather than a care home environment. There are elegant suites, a cinema room, spa and beauty salon, library and a members lounge. Award-winning chefs serve delicious and nutritious

meals using fresh, seasonal produce in the spacious restaurant and private dining room. Outside there are beautiful gardens which provide an attractive place to sit and relax. There are also extensive activities to suit the hobbies and interests of each individual, from trips to the opera and galleries to musical performances, art workshops and fitness classes.

*"Their expert team provides holistic, discreet care, and they are passionate about enhancing the lives of their members as well as their families"*

## Technologically Advanced

Loveday is one of the most innovative care homes in the UK. From sleep and medicine to care planning and pain management, every aspect of care has been analysed and evaluated. They invest in cutting-edge research,

and the best technology has been discreetly implemented throughout the home to ensure that Members have the highest quality of living. Electronic care planning records enable staff to devote more time to care, while a Paincheck App uses facial analysis and AI to assess pain levels. Medicine management software allows medication to be taken when needed, and the latest PCR machines provide rapid test results. Circadian lighting systems automatically adjust to mimic the natural environment, and motion sensors trigger soft lighting to guide members at night.

## Flexible range of health & lifestyle services

For those not quite ready to make the move into a care home, but who still require support, there is The Loveday Day Club, Loveday at Home and Respite at Loveday - all thoughtfully designed for those with a wide range of care needs.

**To book a tour or to secure one of the suites at Loveday contact:**  
**T: 0203 9930210**  
**E: [info@lovedayandco.com](mailto:info@lovedayandco.com)**  
**[www.lovedayandco.com](http://www.lovedayandco.com)**



JOIN  
**mayfairPA**

Mayfair PA is a group of dedicated professionals who enjoy bespoke monthly events in and around Mayfair with the chance to experience luxury boutiques, fine dining restaurants, hotels and business services - all looking to showcase the best they can offer to Personal or Executive Assistants.



As a key influencer in your organization, these evenings are wonderful opportunities to engage with premium brands that will be on your company's radar going forward. Always varied and fun, Mayfair PA is here to point you in the right direction, whatever your company's needs.

Joining Mayfair PA and attending its events are free of charge. To receive regular email event invitations, we do require your name, the company you represent and your work email address for this.

Please contact  
[MayfairPA@pubbiz.com](mailto:MayfairPA@pubbiz.com)  
to express your interest.







*KNIT  
hits*

UPDATE YOUR  
WARDROBE WITH SOME  
CONTEMPORARY  
AUTUMN KNITWEAR

**BRUNELLO CUCINELLI**  
Nordic jacquard sweater,  
£2,650; cream cashmere  
sweater, £1,900,  
159 Sloane Street

*Fashion / Women*



**GANNI**  
Wool pullover, £265,  
94 King's Road



**JOSEPH**  
Leopard pants, £645,  
76 Duke of York Square

**TOAST**  
Neat wool  
cardigan, £135;  
collared half-sleeve  
sweater, £165,  
205 King's Road

**REALLY WILD**  
Fair Isle knit in  
burnt orange,  
£185, 53 Sloane  
Square



**RIXO**  
Cream Lexie  
dress, £295,  
104 King's Road



**THE KOOPLES**  
Red leopard print  
socks, £25,  
36 King's Road



**BRORA**  
Lambswool ribbed  
tank, £145,  
6 Symons Street



**TROTTERS**  
Ribbed knee-high socks  
in French blue, £8,  
34 King's Road



**BODEN**  
Slouchy cable  
cardigan, £34-£39,  
20-23 Duke of York  
Square



**ERIC BOMPARD**  
Cashmere child's  
hat, £65,  
29 King's Road



**PETIT BATEAU**  
Babies' moss stitch  
cotton cardigan, £44,  
106-108 King's Road



**BONPOINT**  
Brianna sweater  
in bronze green,  
£122, 6f Sloane  
Street



**JACADI**  
Baby boy knit onesie, £65,  
156 King's Road



**THE WHITE  
COMPANY**  
Organic cotton  
jumper, £34,  
4 Symons Street

## Fashion / Men



**BAMFORD**  
Maroon jumper,  
£225, 104  
Draycott Avenue



**OLIVER BROWN**  
Lovat  
lambswool  
crew-neck  
jumper, £145,  
75 Lower  
Sloane Street

**ALL SAINTS**  
Statten crew  
jumper, £99,  
14 Duke of  
York Square



**REISS**  
Caine merino wool roll-  
neck jumper, £98,  
35-47 King's Road



**BOGGI MILANO**  
Navy crêpe cotton  
knitted double-breasted  
jacket, £229, 28 Sloane  
Square



**SUNSPERL**  
Loopback  
sweatshirt, £120,  
73 Duke of York  
Square



**HACKETT**  
Cotton cashmere half-zip  
jumper, £175, 137-138 Sloane  
Square



## ST PHILIP'S SCHOOL

The country's leading Catholic prep school for boys aged 7-13



*Inspirational teaching in a warm and nurturing environment with exceptional results*

*50% of leavers since 2019 to Eton, City of London and Dulwich*

[admissions@stpschool.co.uk](mailto:admissions@stpschool.co.uk)



6 Wetherby Place, London SW7 4NE

[stpschool.co.uk](http://stpschool.co.uk)



## *of the best*

As the world becomes more high-tech so is the baby market. Here are some of the pieces we suggest investing in. By Sophia Charalambous



**1**  
**LUMIE**  
The Bedbug, £75, offers a unique sleep experience for young ones. Minimising blue light with low-blue LED technology to help get a better sleep, it also has a night-light and a soothing 15-minute sunset light that can fade to darkness or a reassuring orange all night.  
*Peter Jones, Sloane Square*



**ARTIPOPPE**  
Made from cashmere, cotton and silk, the Artipoppe x Harrods Zeitgeist baby carrier, £680, has an ergonomic design that soothes your baby and promotes bonding.  
*Harrods, 87-135 Brompton Road*



**HUBBLE**  
The Nursery Pal Deluxe 5, £200, is the ultimate way to keep an eye on your baby remotely. Features include pre-loaded lullabies and audiobooks.  
*Argos collection point,  
75 Sloane Avenue*

# Top 10 / Baby tech



4

## SNOO

Once you've tried a Snoo Smart Sleeper, £1,145, you'll never look back. The bassinet uses smart tech to soothe babies back to sleep by mimicking the sounds and motions of the womb.  
*Harrods, 87-135 Brompton Road*



## ELVIE

The double pump, £499, is an ultra-quiet, electric pump that will slip into your bra and express milk. It's all controlled via an app on your phone.  
*Boots, 60 King's Road*

5

## BÉABA

The Babycook Neo food steamer blender, £170, steams, blends, defrosts and reheats food in a glass bowl that doesn't degrade with time.  
*Peter Jones, Sloane Square*



## STOKKE

The Xplory X Signature, £1,079, is made with all the technical details for the most comfortable ride for you and your baby.  
*Harrods, 87-135 Brompton Road*



6

## MORI

The Clever sleeping bag 2.5 tog, £69.50, features thermoregulating fabric so your baby will be at the perfect temperature all night.  
*Harvey Nichols, 105-129 Knightsbridge*



## AQUA SCALE

Patented technology that can precisely weigh your baby is just one of the incredible features of the 3-in-2 digital baby bath, £67.49.  
*Peter Jones, Sloane Square*



63



## TOMMEE TIPPEE

The GroEgg2 digital room thermometer, £22.50, has an innovative colour-changing system and temperature display with three adjustable brightness levels.  
*Boots, 60 King's Road*

8

10



By Appointment  
to H.M. Queen Elizabeth II  
Grocers  
Partridges, London

Partridges  
LONDON

1972 - 2022

## CELEBRATING 50 YEARS IN CHELSEA



Cartoon by **Raine Bryant**, Special Mention Award in Partridges Anniversary Cartoon Competition

Partridges 2-5 Duke of York Square, SW3 4LY

A family owned and run independent speciality grocer stocking over 10,000 fine food & drink products and offering the ultimate in convenience. Open 8am-10pm daily, shop online at [www.partridges.co.uk](http://www.partridges.co.uk) and find us on **Deliveroo**.

For all the latest news & events visit: [LINKTR.EE/PARTRIDGESFOODS](http://LINKTR.EE/PARTRIDGESFOODS)

E: [shop@partridges.co.uk](mailto:shop@partridges.co.uk) T: 020 7730 0651

Follow us on:





## Food / News



A NEW RESTAURANT from world-renowned Ukrainian chef Yurii Kovryzhenko and his partner Olga Tsybytovska will offer a taste of their homeland. Mriya, meaning “dream”, will be staffed by Ukrainian refugees, serving dishes like borscht with porcini mushrooms and duck and chicken kyiv with mashed new potatoes and peas.  
*275 Brompton Road*

TAKING ITS NAME from a small Japanese town, Nakanajo will serve dishes enjoyed across specific regions of Japan and Peru in the heart of Chelsea. Founded by hospitality entrepreneur Josh Ahmet, the venture is one of the first and only Peruvian izakaya restaurants in the UK. Dishes will include Nikkei chicken karaage served with chipotle mayo and red onion; and ceviche maki with sea bass, mango salsa, avocado and mangetout. Cocktails will include Sumo in a Sidecar, a mix of Four Fox saké, apricot brandy and lemon juice.

*356-360 King's Road*



HARRODS WILL BE the first location for Louis XIII cognac's new-look boutiques. Designed by French architecture firm RDAI, the space will be inspired by the “swirl of time”, evoking the spirit's lengthy ageing process and the action of swirling it in the glass. A screen will transport viewers to Grande Champagne, giving a glimpse of the craftsmanship that goes into the luxury spirit.  
*87-135 Brompton Road*



### PUB GRUB

As autumn fast approaches and the temperatures drop, a cosy pub becomes ever more enticing. Here are three of the best

#### THE CADOGAN ARMS

The long-awaited 2021 reopening of this much-loved Chelsea institution saw it restored to its former glory with an ambitious renovation that gave it a sharp new look and kept its quintessentially British roots. Alongside its carefully curated wine, beer and cocktail collection, the pub has an enticing menu that celebrates seasonal ingredients.  
*298 King's Road*

#### THE FOX & PHEASANT

Tucked away on quaint Billing Road, this establishment was originally founded in 1846 and began life as the Bedford Arms. Transformed from an old football pub by singer-songwriter James Blunt and his wife Sofia, it has styled itself as a "little country pub" in the heart of London. Alongside a varied assortment of real ales, the Fox prides



The Cadogan Arms

itself on its food. Make your order, grab a glass and head to one of its three fireplaces.  
*1 Billing Road*

#### THE CROSS KEYS

Open since 1708, this pub is the perfect spot for guests looking to escape the hustle and bustle of the King's Road. Many flock here for the food, which is creative, well-considered and thoroughly British with the menu changing daily.  
*1 Lawrence Street*



A SELECTION OF OVER 500 wines and spirits will be available to try this October as the award-winning Wine & Spirits Show comes to Chelsea's historic Old Town Hall. The three-day programme of tasting and masterclasses successfully gathered 2,000 wine lovers and 400 trade members at each of its last two shows, uniting drinks fanatics in a relaxed but informative atmosphere. The venue will be divided into three halls, with the main hall dedicated to wine producers, the second to the Global Masters, beer and spirits exhibitors, and the third turned into a masterclass theatre.  
*October 21-23, Chelsea Old Town Hall*

# HANS'

BAR & GRILL



## DINE IN STYLE IN THE HEART OF CHELSEA

Embrace autumn with our delicious new seasonal menu and Sunday lunch menu.

PAVILION ROAD | CHELSEA | SW1X 0AW

For reservations, call +44(0)20 7730 7000

Or email [info@hansbarandgrill.com](mailto:info@hansbarandgrill.com)

Follow us: [@hansbarandgrill](https://www.instagram.com/hansbarandgrill)    [hansbarandgrill.com](https://www.hansbarandgrill.com)

## Food / *The Sea, The Sea*



ALEX HUNTER

SINCE THE SEA, THE SEA OPENED ITS DOORS IN APRIL 2019, THE FISHMONGER, DELICATESSEN AND SEAFOOD AND CHAMPAGNE BAR HAS BECOME A FAVOURITE HAUNT FOR SERIOUS SEAFOOD LOVERS. FOUNDER ALEX HUNTER TELLS WILL MOFFITT ABOUT BRINGING FRESH IDEAS AND FRESHER FISH TO PAVILION ROAD



THE SEA, THE SEA is a proper seafood restaurant. A quick glance through its windows – where skewered fish unapologetically reside – and its protein-rich menu confirms this. Beer-battered cod is out. Dry-aged monkfish with dashi glaze and smoked caviar are in. Drawing on the renowned talents of head chef Leandro Carreira, formerly of Londrino, it's a restaurant that prides itself on being a fun place for people who take seafood seriously.

That has proved to be a winning formula. Since it opened its doors on Pavilion Road in April 2019, the venture has impressed locals and critics alike with its seafood treats sourced from the English coast that are delicately refined by Leandro into compelling but uncomplicated dishes. It also doubles up as a fishmonger and delicatessen, enabling customers to buy fresh seafood sourced directly from fishermen and cook it from the comfort of their own homes.

For its founder Alex Hunter, who also co-founded the Bonnie Gull Seafood Shack, launching a venture in

this prime location was a no-brainer. "A colleague told me about all the good things happening on Pavilion Road and he asked if I'd be interested in doing a fish retail concept. It was just a great pitch on a great development with a landlord who's trying to do things the right way," Alex says. "The dual function of being a shop and a seafood bar was also hugely attractive."

Growing up in Edinburgh with a mother who was a semi-professional cook, Alex was raised on good quality food, enjoying the wide variety of fresh fish and seafood Scotland has in abundance. Moving to London in the early noughties he was surprised at the dearth of good value seafood restaurants in the capital.

"I've always enjoyed eating fish. It's not such a big deal in Scotland. There's a lot of fish everywhere," Alex says. "When I moved to London, I felt that the only places that served fish were very upmarket, very expensive. The idea for Bonnie Gull came out of that."

Bonnie Gull began as a pop-up in an old pie and eel shop in east London. It sourced a wide variety



# Fish *food*

of high quality fish and served it in relaxed, upbeat surroundings. For its founder, while The Sea, The Sea is a different proposition, the overall goal is much the same.

“We’re an island surrounded by amazing fish, and yet we export most of it, and we import most of what we eat. I think our tastes, as a nation, have become incredibly narrow,” Alex says. “We’re not trying to claim we own it, but we’re part of this movement that is trying to bring back local fish because fish is best when it’s eaten nearest the source.”

“We’re trying to bring seaside freshness to London and open people up to traditionally less popular or well-known fish,” he adds. “We sell a lot of wild bass in Chelsea, which is fantastic because it’s line-caught, it’s plentiful, but it’s quite premium. We’re also trying to promote some of the lesser-known species like grey mullet, for instance.”

To achieve that quality, Alex has worked to establish close relationships with fishermen and suppliers in

Cornwall, Devon and Scotland. Fresh batches are transported via truck and processed overnight to ensure maximum freshness. Sometimes, in the case of the dry-aged monkfish, the catch is kept in a high-tech vessel enabling it to retain freshness while acquiring a “funkier” flavour. Once the fish is ready to go, then it’s up to Leandro to work his magic.

“When you’ve got a chef as talented as Leo all you’ve got to do is set a direction and occasionally, if he’s going off course a little bit, just help steer him back in,” Alex says. “Leo gives a lot of freedom to other chefs as well, everyone gets to contribute creatively here.”

Perhaps the biggest compliment you could pay The Sea, The Sea is that its menu is fashioned to a large extent by fishermen.

“The menu in Chelsea will change every day, sometimes twice in a day, because we’re all about using what’s in the shop, what’s in season, what’s best value at the time,” Alex says. “It’s all based on what the fishermen are catching.”

# Charity / K+C Foundation



## ANNOUNCING 16 NEW PROJECTS TO BUILD BETTER LIVES IN A BOROUGH OF INEQUALITIES

In response to the findings of the Kensington + Chelsea Foundation's 2021 research report *Poverty and Prosperity in Kensington + Chelsea*, which identified the key drivers of inequalities in our borough, the foundation has recently launched three new portfolios. These portfolios will invest in initiatives providing targeted and tailored support to residents affected by poor mental health, unemployment and poor educational attainment.

It is delighted to announce that, with the support of two community grant panels, it has already chosen 16 new, impactful partnerships focusing on improving mental health and reducing educational inequalities. Across these portfolios, it will make a difference to 6,000 residents at risk over the next three years.

### RICHARD'S STORY

Through the Improving Mental Health portfolio, the foundation is able to help residents like Richard, who joins a daily three-course table-service lunch that aims to tackle food poverty and social isolation. The lunch programme also offers wraparound support for issues such as addiction, mental health and housing, which has slowly enabled Richard to open up and access other support services.

Richard is 60 years old, has severe learning difficulties and a reading age of around five. He began attending the lunch service after becoming homeless due to a marriage breakdown. Over time he has regularly connected with the support worker at the lunch project, who has helped him to read and understand bills and to support his mental health needs, referring him for help with suicidal ideations.

Having previously struggled to engage in meaningful activity, he now takes part in reading classes, art classes and outings and has recently joined Walking Football. He sees the support worker as somewhere between friends and family, in the absence of either in his life, and both his physical and mental health have improved. Richard has commented that the lunch service is a lifeline for him and without it he would feel "alone and depressed".

More information about the process and the projects funded can be found on the foundation's website and it will be providing updates through its newsletters and webinars on the projects' progress. Sign up to the newsletter here to stay up to date: [thevandcfoundation.com/newsletter](https://thevandcfoundation.com/newsletter)

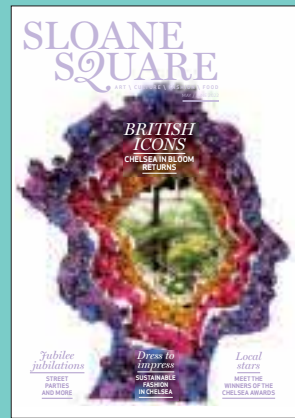
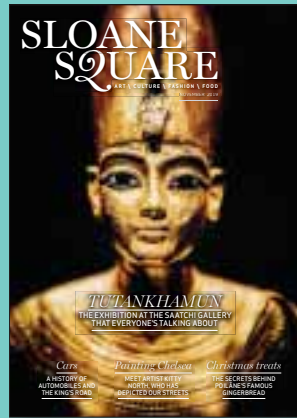
The foundation will open its Developing Skills and Employment portfolio in the autumn and would be keen to hear from you if you are interested in donating to this fund, or finding out about any of its programmes. Please contact [team@thevandcfoundation.com](mailto:team@thevandcfoundation.com).

Registered charity number 1125940

Kensington  
+ Chelsea  
Foundation

A better life together

# KEEP IN THE KNOW



We know that these days you might not be in the area every day - or you may just visit us occasionally - but you still want to keep up-to-date with what's happening locally

So why not sign up to receive the digital edition of Sloane Square and we'll send you the latest edition as it is published

That's it. You will receive no other emails or marketing material

To start the service simply visit [pubbiz.com/subscribe](http://pubbiz.com/subscribe)



MEET GERMAN MEZZO SOPRANO FRIEDERIKE KRUM, THE  
VERY FIRST AMBASSADOR FOR THE CHELSEA PENSIONERS.

AS TOLD TO ALICE CAIRNS

I LIVE VERY CLOSE to the Royal Hospital and I have always spent a lot of my time there. One day I got talking to a pensioner and he told me about the Scarlets Appeal, which was a campaign to raise money for a lighter coat for the Chelsea Pensioners. The old coat was very warm, very thick and very heavy, so the pensioners were really suffering in hot weather. Remember, they are anything but retired, they are so busy with their voluntary work and they needed a uniform that would work for them.

The Chelsea Pensioners were kind enough to make me an ambassador and I set to work raising money. One thing I did was to record a specially commissioned song called *Home*

*From Home* with Russell Watson, with a launch performance at the Royal Albert Hall. Thanks to that and to plenty of generous support, I managed to raise over £100,000 for the Scarlets Appeal, which was about half of the necessary funds.

It's something I'm very proud of, because it is such an iconic uniform. To have played a part in its history felt really special.

The friendships I made during that time were also very meaningful to me and when lockdown hit, I didn't want to stop visiting my friends at the Royal Hospital. Every day I'd walk along the South Grounds and I'd spend an hour chatting to the pensioners through the fence in Ranelagh Gardens. That



FRIEDERIKE WITH RUSSELL WATSON



generation isn't always confident using FaceTime and iPads, so it became really important for them to have a real-life connection with people on the outside. Now that restrictions have lifted, I visit my pensioner friends for coffee, or take them to museums and events. A few months ago I attended Henley Festival and I took a Chelsea Pensioner with me as my guest. He made the best wingman!

I love combining my singing with charity work and the military is a passion for me. I just think it is such amazing work – to put your life on the line for a greater good, for peace, for safety. I have huge respect for these people.

One thing I'll never forget is being invited by the German Ministry of Defence to fly out to Afghanistan with Ursula von der Leyen [who is now president of the European Commission].



I performed for the troops out there and I spent a whole week in the camp, having some really moving conversations. I felt the camaraderie and I was exposed to some of the danger too. We had an attack on the night of my concert, when I was performing outside in Kabul. There was a casualty – a young German who

had volunteered in a school out there. We took his body back with us on the plane to Cologne and the captain allowed me to sing *Amazing Grace* through the intercom. I just felt I had to do something, to honour him. I could not ignore it.

Now I'm turning my attention to Ukraine, because the Chelsea Pensioners are extremely passionate about that conflict. One of the pensioners, a gentleman called Chris O'Connor, has been to Ukraine three times, driving ambulances and bringing in medical aid. He is 80 years old

# The right note



with an oxygen tank! What is happening in Ukraine is atrocious and we cannot allow it to become an everyday thing that we get used to. At the moment, the pensioners and I are in the process of planning a fundraising concert to raise awareness and to supply proper medical equipment to those in need.

I hope to encourage more people to visit the Royal Hospital. It's such a gem in Chelsea and the entire location is open to the public. You can of course book tours where a pensioner will take you round and really teach you about the history, or you can visit the cafe and Ranelagh Gardens, the chapel or the fantastic museum. The Royal Hospital also has my very favourite post office in London.

The Chelsea Pensioners are so lovable and so very interesting – they have so much to tell and I really appreciate spending time with that generation. Becoming their ambassador was a very proud moment for me and I hope to continue to work with them for a long time to come.



THIS OCTOBER, HOMELESSNESS CHARITY GLASS DOOR IS HOLDING ITS 10TH ANNUAL SLEEP-OUT. ALICE CAIRNS CELEBRATES A DECADE OF VITAL FUNDRAISING

# Helping the *homeless*

IN OCTOBER 2013, Homeless Concern, a small charity based above Chelsea Methodist Church, held a sleep-out to raise money for its vital winter services. Ten years later, the charity has moved to larger offices, doubled the size of its team and rebranded itself as Glass Door – but its annual sleep-out is still going strong.

“Chelsea is where we started, and it’s at the heart of where we come from and what we do,” explains fundraising manager Ellie Francis. “The sleep-out is held in Duke of York Square and it has a real community feel to it – a sense of camaraderie. We’re all in it together for one night.”

Participants arrive in the square at 9pm, to be greeted with cups of tea and snacks. They set out a patchwork of yoga mats,

sleeping bags, blankets, umbrellas, flasks and cardboard sheets, before settling down to snatch what sleep they can. At 5am the next morning, they’re greeted with a hot bacon sandwich (or veggie alternative) from the team at nearby Partridges. Ever since the pandemic, Glass Door has also been offering the option to participate virtually, via livestream, while sleeping outdoors at a location of your choice.

“We do want to be clear that this is not replicating what it’s actually like to sleep rough,” says Ellie. “We have staff and security on site, hot tea, a first aider in case anything happens, and we all go home to our lovely warm beds afterwards.”

Nevertheless, Ellie reports that participants are often surprised by how difficult the

# People / Local hero

experience can be – asking whether it's possible to turn off the street lights, or to make the square quieter.

"It can be eye-opening, just discovering how noisy and bright it is in central London at four in the morning. All night you experience waves of different people, from a younger crowd heading home at 2am, to workers out and about at 5am. It's never quiet. You can feel quite vulnerable and exposed, although we're always on hand with tea and biscuits!"

The night of interrupted sleep is well worth the sacrifice, however, with all cash raised going directly to fund Glass Door's vital work. To celebrate its 10th anniversary, the charity hopes to raise £200,000 for people who are at risk of, or are experiencing, homelessness.

"We have an all-year-round team of caseworkers who work with our guests one-on-one to remove barriers to becoming

more stably housed," Ellie says. "We can help them to recover documentation, open bank accounts, register with a GP and navigate the system. In the winter we run night shelters in partnership with churches in Chelsea, Hammersmith, Fulham and Wandsworth to provide food and a safe place to sleep."

And now, as the sleep-out approaches its 10th anniversary, Glass Door's services seem more vital than ever. A recent Chain report showed that almost 3,000 people experienced homelessness between April and June 2022, a 16 per cent increase on the same period in 2021, with almost half of those rough sleepers new to the streets.

"The cost of living crisis means that we are seeing more and more people coming to us who aren't yet homeless, but who are at risk of becoming homeless," Ellie says. "There are a lot of people in the borough who need our help, hidden behind the glitz and glamour of the King's Road. It's important to raise awareness of that, and to take the time to stop for a day and think about those people who need our support."

And Chelsea appears to be rising to the challenge. Among those who have already signed up is Camilla, a local resident who has taken part in every sleep-out since the

inaugural 2013 event. "Each year has had something special," she explains. "I've taken part with friends, and also with my sons, as I believed it was very important to get young teenagers involved. Raising funds via the sleep-out is crucial because, living in London, we can see the scale of homelessness every day."

"Everyone's support is so very appreciated," Ellie adds. "It helps us to continue doing what we do."

To take part in the 10th annual sleep-out, visit [glassdoor.org.uk](http://glassdoor.org.uk)



# Social / People



Daisy Edgar-Jones



Rosé



Eileen Gu



Eva Apio

## COCKTAILS AT TIFFANY

### VISION & VIRTUOSITY LAUNCH PARTY AT SAATCHI GALLERY

A century and a half after Tiffany's opening in London, Vision & Virtuosity featured over 400 unique objects that have defined the brand since 1837. Guests at the opening bash included *Bridgerton* star Nicola Coughlan, Florence Pugh, Daisy Edgar-Jones from the TV adaptation of *Normal People* and Rosé, from South Korean girl group Blackpink.



Nicola Coughlan, Florence Pugh and Emilia Wickstead



Rachel Zegler



Candice Lake



Sabrina Dhowre Elba  
and Simone Ashley



## FURNITURE FLAGSHIP

### LEMA'S EXPANDED SHOWROOM ON KING'S ROAD

To celebrate the unveiling of its expanded showroom space, Lema welcomed clients, designers and architects to view the designs that included items from the recent Salone del Mobile in Milan.

One of the rising stars of contemporary Italian design, Federica Biasi, was the guest of honour and presented her new Niveaux sofa that strives to "adapt to any space or lifestyle".

Lema has also opened new offices just across the road on Sydney Street.



## Beauty / News

DUCK & DRY has a new treatment bar to repair dry and brittle hair after the summer. Relax with a glass of prosecco and choose from four nourishing options, including a scalp scrub and moisture boost. Treatments start from £15 and are added on to your blow dry.  
*335-337 King's Road*



### SEPTEMBER 11

#### Living Medicine: Skin & First Aid

This hands-on workshop at the Chelsea Physic Garden will teach you how to use herbs from your garden to protect your skin. You'll make an infused oil, lotion, cream and ointment as part of a first-aid kit that will help you address problems like eczema and insect bites. Lunch at the on-site cafe is included.  
*66 Royal Hospital Road*



HAVE YOU VISITED the recently opened Vita Boutique Fitness studio on Sloane Square? The studio is offering an exciting selection of small group classes, including ab workouts, cardio dance parties and relaxing gong sound baths. If you'd prefer to work out one-on-one, individual classes can be tailored to your needs, and are particularly recommended for those getting back into fitness after injury or surgery.  
*31 Sloane Square*



SLEEP.8 is renovating its store on the King's Road. The new 2,950 sq ft space will offer bespoke solutions for sleep-related issues, from high-tech beds and hypoallergenic bedding to temperature-controlled pillows and sleep aids. Customers can try products in-store to ensure they find the perfect fit.  
*362-368 King's Road*



PERFUME BRAND DIPTYQUE has launched a range of household cleaning products. The La Droguerie collection comes in refillable amber bottles made from recycled glass, and is scented with herbs, fig, orange blossom and basil. From dishwashing liquid to anti-odour candles, the range brings the art of perfumery to even the most mundane household tasks.  
*160 Sloane Street*



KXU IS NOW PROVIDING osteopathic and chiropractic support to its clients. Experts including chiropractor Dr Ben Carraway will work with you to diagnose and treat musculoskeletal system disorders, increasing the mobility of your joints, relieving muscle tension and enhancing blood circulation. Treatments also include advice on exercises to aid recovery and prevent symptoms recurring.  
*241 Pavilion Road*

## Beauty / News

THIS SEPTEMBER, Cosmetics à la Carte is launching a recycling scheme to limit packaging waste. When you return five empty skincare or makeup items to the Chelsea boutique and sign up to the newsletter, you'll receive £5 off your next purchase. Your empties will be recycled and turned into new packaging.  
*192 Pavilion Road*



THE NATALI KELLY CLINIC is offering non-invasive skin treatments using nothing but light. The Dermalux LED treatment involves exposing the skin to light from the infrared part of the spectrum in order to reduce the appearance of acne, blemishes, rosacea, redness and pigmentation. The result is healthier, more radiant skin – with no downtime required after treatment.  
*69 Walton Street*



NEVILLE HAIR AND BEAUTY has launched the Diamond treatment, which uses laser-cut diamonds and vacuum suction to unclog pores and remove dead cells. Costing £85 for 30 minutes, it enhances circulation and lymph flow while improving skin tone and texture.  
*5 Pont Street*







THE POWER TO  
**EXTEND YOUR LIFE.**

In the last few years, we've seen a dramatic change in people's behaviours as they seek to understand their health and wellbeing better. At Radox Health, we provide a range of private health packages designed to do just that.

Using patented Radox technology we uniquely screen for hundreds of sensitive disease markers to produce personalised health data designed to identify early signs of illness and predict the risk of disease. This proactive approach empowers clients to track their health data and make simple lifestyle changes to live healthier for longer.

#### **Why should I be tracking my health?**

Regular review is key to maintaining good health and wellbeing, by taking control of your health in this way you can target problems before they arise. Our cutting-edge Signature health programme combines access to our complete portfolio of diagnostic tests with expert advice.

The 12-month programme is inclusive of two full health checks per year and involves three phases;

#### **1. Initial Health Screen**

Over 350 data points are measured comprising markers related to gut health, tumour markers, genetic tests for inherited conditions and more to provide an in-depth analysis of your overall wellness.

#### **2. Follow up Consultation and Report**

After the initial screen you will receive a personalised health plan and follow up GP consultation designed to help establish your health baseline and understand areas of improvement that are specific to you. Our GPs may recommend additional testing including further genetic tests based on your results inclusive of the cost.

#### **3. Follow up Health Screen**

After 6 months you will be invited back for repeat testing to identify any improvements or aspects of your health that still require attention, this data can then be tracked over time.

---

With clinics conveniently located in Marylebone, St Pauls, Chelsea, Chiswick and Fulham it's never been easier to take control of your health. Start your journey today by visiting [radoxhealth.com](https://www.radoxhealth.com).

# My Chelsea / Polly McMaster

LUXURY WOMENSWEAR LABEL THE FOLD  
FOUNDER AND CEO **POLLY McMASTER**  
TELLS US ABOUT CELEBRATING THE  
COMPANY'S 10TH ANNIVERSARY AND  
WHY CHELSEA IS THE PERFECT LOCATION  
FOR THE BRAND'S BOUTIQUE



## HOW LONG HAS THE FOLD BEEN IN CHELSEA?

We opened our beautiful store in Chelsea in March 2018 after five years in Clerkenwell. This was a key milestone for the brand, opening an exciting retail concept that reflects our modern minimalist aesthetic. Chelsea was the perfect location for us. Over the years we have hosted incredible events and offered our community the chance to network with like-minded women and form friendships and business links.

## WHY DID YOU WANT TO CELEBRATE THE 10TH ANNIVERSARY WITH A LIMITED EDITION FUTURE ICONS COLLECTION?

When I started the business in 2012 one of my goals was to become the go-to brand for quality and stylish workwear. We want to be seen as the authority on workwear, leading the way when it comes to versatile and timeless clothing that works as hard as the groundbreaking and ambitious women we dress. We launched the



Future Icons collection to celebrate our exceptional craftsmanship, taking inspiration from our signature bestselling silhouettes. We created 10

iconic styles made from the highest quality fabrics that women can wear now and for years to come.

## WHAT IS YOUR TOP PLACE IN CHELSEA TO EAT AND DRINK?

I absolutely love walking down Pavilion Road, there are lots of amazing restaurants and a buzzy street cafe atmosphere.

## FAVOURITE QUOTE?

Eleanor Roosevelt once said, 'A woman is like a tea bag; you never know how strong it is until it's in hot water.'

## WHAT'S NEXT FOR THE FOLD?

It has been 10 fantastic years and I'm so proud of what we have achieved

but I do honestly feel this is only the beginning and there's so much more to come. Our most exciting opportunities include continuing our international expansion including in the US, which is already our biggest market, expanding our product offering to cater to our customers' lifestyles and most importantly we are working on our ESG strategy. We have already taken steps to remove plastic and virgin polyester from our supply chain, we are a member of the Ethical Trade Initiative and we continue to support our key charity partner, Smart Works.

28 Cadogan Place



Above left: fashion from The Fold.  
Below: Pavilion Road



## Bar 55

A warm and friendly BAR in the grounds of Stamford Bridge. Located on the 1st floor of the Copthorne Hotel, serving bespoke cocktails and exciting BAR food.

Opening Hours: 11:00 - 23:00  
Bar Food served from: 11:00 - 17:30



## Frankie's Sports Bar & Grill

Never miss a moment of your favourite sports as you tuck in to a tasty meal, surrounded by 16 big screens. Our rotating seasonal menu will see you through all the football games, golf tournaments and NFL games as we aim to give you access to every live sport game on TV.

Opening Hours: 12:00 - 23:00



## Stadium Tour and Museum

Our fantastic live tour guides lead you through Stamford Bridge on a fantastic 60 minute experience including the Dressing Rooms, Press Room, Player's Tunnel, Pitchside and much more.

  
**MILLENNIUM & COPTHORNE**  
HOTELS  
AT CHELSEA FOOTBALL CLUB



*The Pride of London*

Experience a stay at the Home of the Blues with modern rooms with luxurious fittings and large marble bathrooms providing the perfect setting for business and pleasure.

The ideal place for a weekend break or to stay and watch Chelsea play at home.



*Enjoy your stay with us*

For more information, contact our reception team on 0203 479 3565

**MILLENNIUM**  
HOTELS AND RESORTS





# Neatsmith

BESPOKE FITTED WARDROBES, STUDIES & LIVING ROOM UNITS



BRENTWOOD | CHELSEA | HAMPSTEAD | HAMPTON HILL | HATCH END

[WWW.NEATSMITH.CO.UK](http://WWW.NEATSMITH.CO.UK)