

SLOANE SQUARE

ART \ CULTURE \ FASHION \ FOOD

NOVEMBER / DECEMBER 2022

FEEL THE WARMTH THIS CHRISTMAS

CELEBRATIONS, CAROLS
AND FESTIVE FOOD

*Picture
perfect*

TRAILBLAZING
PHOTOGRAPHY AT SAATCHI

*Singing
the Blues*

FOOTBALL
IN CHELSEA

*In
Style*

A NEW HOME FOR
THE FASHION SCHOOL

YOKO

LONDON

REDEFINING PEARLS



NEW FLAGSHIP STORE
6 SLOANE STREET

YOKOLONDON.COM @YOKOLONDONPEARLS







Molteni & C | Dada

MOLTENI&C | DADA FLAGSHIP STORES: LONDON SW3 2EP, 245-249 BROMPTON ROAD / LONDON WC2H 8JR, 199 SHAFTESBURY AVENUE

MOLTENI@HOME - VIRTUAL DESIGN CONSULTANCY AT MOLTENI.IT

Contents / November-December 2022

8 CALENDAR

Things to see and do in Chelsea this winter

14 CALENDAR

From carols to lights, we've got Christmas covered

16 NEWS

All the latest local happenings, including Santa's grotto



21 ROYALTY

The local shops that are favourites of the royal family

22 FOOTBALL

The fascinating history of Chelsea football club

26 BOOK CLUB

Local bookworms recommend their top sporty reads

29 ART NEWS

Surrealism on show, plus Handmade in Britain returns

32 ART

A day in your life. Photographer Alison Jackson's community competition

34 ART

Black photographers take centre stage at Saatchi Gallery

38 CULTURE

Snowy scenes by the acclaimed artist Whistler

40 DANCE

Meet Chelsea Ballet Schools founder Dorothy Ind

43 FOOD NEWS

New local launches include a Mexican restaurant and margarita bar



12



COVER

Beaverbrook Town House at Christmas.

Picture Perfect
THE BEVERBROOK TOWN HOUSE
PHOTOGRAPHY BY SAATCHI

Singing the Blues
THE BEVERBROOK TOWN HOUSE
IN CHELSEA

In Style
A NEW HOME FOR
THE FASHION SCHOOLS

Contents



29



46 FOOD

Four chefs share their top tips for cooking at Christmas

50 CHRISTMAS GIFTS

Perfect presents to buy in Chelsea's boutiques

56 FASHION NEWS

Football-inspired fashion plus a new jewellery store

61 TRENDING

Dress to impress with our party style guide



66 FASHION

Inside the Fashion School's new Burnside Street base

68 SOCIAL

Anniversary celebrations and pawsofme festivals

72 CHARITY

How you can help your neighbours in need

74 LOCAL HEROES

The charities offering a lifeline to local people this Christmas

76 BEAUTY NEWS

Party pampering plus Diptyque's new store

78 TOP TEN

Seasonal surprises: the best advent calendars

80 HEALTH

Wellness hub KXU celebrates five years

82 MY CHELSEA

Oliver Tomalin shares his top local spots

SLOANE SQUARE

is produced for Cadogan by

Publishing Business
Berkeley Square House
22 Berkeley Square
London W1J 6BD
020 7259 1053

Cadogan

10 Duke of York Square
London SW3 4LY
cadogan.co.uk

Editor

Alice Cairns
020 7259 1058
alice@pubbiz.com

Deputy editor

Will Moffitt
Sub-editor
Kate White

Designer

Andy Lowe

Advertisements

Bridget Rodricks
020 7259 1059
bridget@pubbiz.com

Richard Taylor
07423 099 277
richard@pubbiz.com

Publisher

Adrian Day
020 7259 1053
adrian@pubbiz.com



This product is made of material from well-managed FSC®-certified forests and from recycled materials.

All inks vegetable based. Our printers are certified to ISO 14001 Environmental Management.

This magazine is fully recyclable, when you have finished reading it please put it in your paper recycling bin.



Publishing Business is a member of the Professional Publishers Association and observes the PPA Code of Publishing Practice.



@SloaneSquareMag
@DOYSQ
@SloaneStreetSW1
@Pavilion_road



@SloaneStreetSW1
@PavilionRoad
@dukeofyorksquare
@SloaneSquareMag
@Kingsroad.london



Poliform

Calendar



DMITRY KOKH, WILDLIFE PHOTOGRAPHER OF THE YEAR



BRANDON GÜELL, WILDLIFE PHOTOGRAPHER OF THE YEAR

ONGOING

WILDLIFE PHOTOGRAPHER OF THE YEAR 2022

Discover 100 stunning photos that celebrate the beauty and mystery of life on planet Earth. This redesigned exhibition is made up of entries to the 59th Wildlife Photographer of the Year competition, and features photos of everything from seascapes and underwater worlds to predators, insects and harrowing scenes of climate change.

**Natural History Museum,
Cromwell Road**

NOVEMBER 30 - JANUARY 7

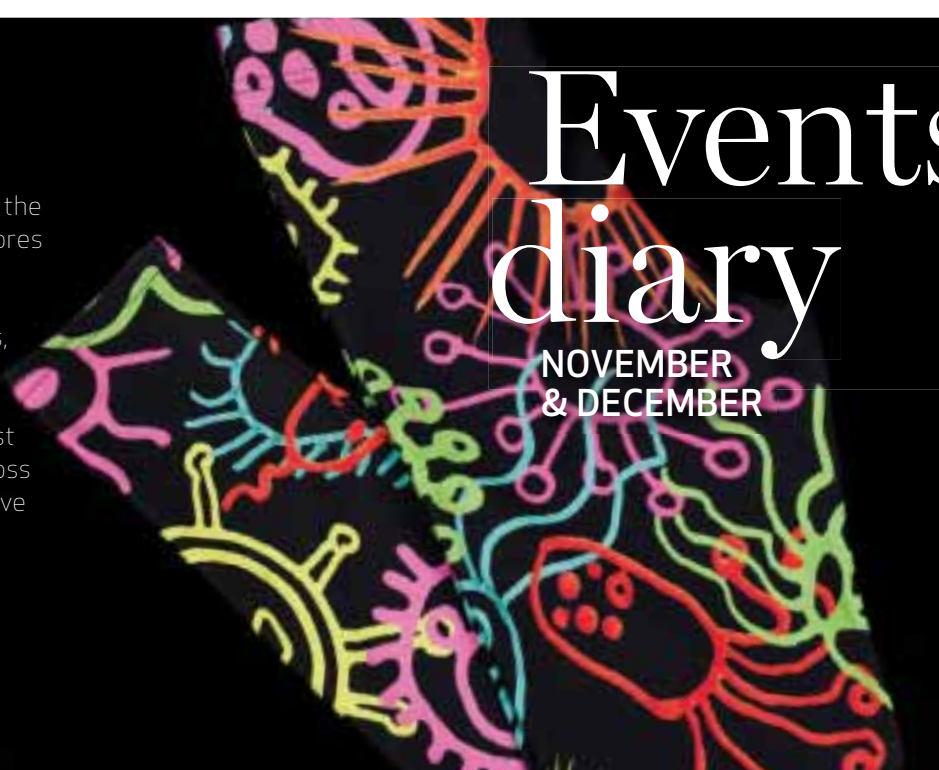
INJECTING HOPE

This free exhibition at the Science Museum explores the worldwide effort to develop a vaccine for Covid-19. Artworks, personal objects and interactive displays reflect the race against time as scientists across the globe fought to save lives.

Exhibition Road

Events diary

NOVEMBER
& DECEMBER



NOVEMBER 18 - DECEMBER 17
BAGHDADDY

This moving coming-of-age story is set against the backdrop of the Gulf War, exploring cultural identity and the father-daughter relationship. It's the debut work of Jasmine Naziha Jones, and was developed as part of the introduction to playwriting group at the Royal Court. On November 29 there will be a post-show talk and Q&A with the writer.

Royal Court Theatre, Sloane Square



DECEMBER 2

TCHAIKOVSKY'S NUTCRACKER GALA
Bask in the Christmas spirit with this evening of classical music, with a range of festive favourites from renowned composers including Tchaikovsky's *Nutcracker*. Five dancers will perform excerpts from the ballet and there will be an immersive photo opportunity with a sparkling snowflake ballerina.

Cadogan Hall, 5 Sloane Terrace

NOVEMBER 24-27
CHRISTMAS FAIR

The annual Chelsea Physic Garden Christmas fair returns, this year with more than 100 curated stands. Browse festive products from the very best independent suppliers, from jewellery and crafts to food and drink. The garden itself will be transformed into a festive wonderland, and refreshments will be available in the on-site cafe.

66 Royal Hospital Road





DECEMBER 19

ALL-STRADIVARI GALA CONCERT

Dutch violin virtuoso Janine Jansen directs a concert performed entirely on instruments made by Antonio Stradivari. World-class musicians will pay tribute to some of the most important instruments ever created, with a programme including pieces by Chausson and Mendelssohn.

Cadogan Hall, 5 Sloane Terrace

UNTIL

NOVEMBER 12

DEAF LED POP-UP PERFORMANCE

Performers Sahera Khan and Louis Kissaun lead these storytelling sessions for families, delivered in British Sign Language and spoken English. The free, inclusive events have been co-designed with Frank Barnes Primary School for Deaf Children, and last approximately 40 minutes.

V&A, Cromwell Road



FROM NOVEMBER 3

TECHNICIANS: THE DAVID SAINSBURY GALLERY

A new, free gallery is opening at the Science Museum, celebrating the vital but hidden role of technicians. Visitors will be able to try out interactive tasks, including working as a lighting technician on the set of *Black Panther*, and piloting a remotely operated vehicle on the ocean floor.

Exhibition Road



Where better to celebrate Christmas?

Join us for the Chelsea Christmas Lights Switch-On
Saturday 19 November, from 11am

Family entertainment throughout the neighbourhood and live on the big stage, complimentary horse & carriage rides, a Christmas market, Christmas crafting and more.

With plenty of sparkling seasonal festivities across the
 neighbourhood until Christmas Eve

Visit Santa's Grotto, the Bavarian Curling Rink and Winter Terrace on Sloane Square, enjoy tempting offers, cosy al fresco dining, festive feasts and the best sparkling displays.

www.ChelseaChristmas.co.uk

Calendar

NOVEMBER 3

THE SEAGULL

The latest instalment in the National Theatre Live series is *The Seagull*, with Emilia Clarke making her West End debut. Enjoy the play from the comfort of the Everyman cinema, where waiters will deliver food and drinks – including cocktails, ice cream sundaes and freshly baked cookie dough – to your seat.

279 King's Road



NOVEMBER 30

CHOCOLATE TASTING WITH COCOA RUNNERS

Spend the evening tasting 10 different kinds of craft chocolate, with £10 from the price of every ticket going to the campaign A Garden for All – Engaging Londoners with Nature. Along the way, you'll learn about chocolate's fascinating history and the science of taste and flavour.

**Chelsea Physic Garden,
66 Royal Hospital Road**



NOVEMBER 11-20

LONDON JAZZ FESTIVAL

The London Jazz Festival is celebrating its 30th anniversary with a jam-packed programme of performances, many of which will take place at Chelsea's Cadogan Hall. With performers including Dianne Reeves, the five-time Grammy-award winning singer, and Ron Carter, the most recorded jazz bassist in history, this is your chance to see jazz royalty in action.

5 Sloane Terrace



DIANNE REEVES, PHOTO: JERRIS MADISON



EATON HOUSE BELGRAVIA

Celebrating 125 years of excellence

Potential is Our Passion



Since 1897, Eaton House Belgravia, our academically outstanding single sex school for boys, has achieved exceptional academic results. Between 2010-2022 some 24% of our seven and eight-year-olds have left for Westminster, St Paul's and King's College, Wimbledon, with many more offers to these and other fine schools. This achievement is all the more remarkable as we offer a non-selective entry for boys at ages 2+ and 4+.

Wellbeing is at the core of this well-rounded education. Each child is supported as an individual so that they can flourish both academically and socially. Finding the potential in each child is our passion.

**New open house dates available now,
visit [bookopen.day](https://www.eatonhouseschools.com) to book.**

Speak to our Head of Admissions, Miss Sam Feilding, on 020 3917 5050, or visit www.eatonhouseschools.com for more information.

*Non-selective at 2+ and 4+ entry.

Christmas Lights switch-on



NOVEMBER 19

MARK THE START of the most magical time of year with the Chelsea Christmas Light Switch-On, taking place on Saturday November 19. The King's Road will be part-pedestrianised (just wander down from Sloane Square), with a Christmas market and entertainment for all the family beginning at 11am. Join us to meet the reindeer, try your hand at glass bauble blowing and wrapping paper marbling at the artisan makers quarter, and soak up the atmospheric entertainment from the big stage.

Complimentary horse and carriage rides will return along with many shops, restaurants and bars running tempting offers and exciting experiences. Father Christmas and a little local hero, their name picked off the top of the 'nice' list, will be switching on the lights this year, illuminating Chelsea at 5pm.

Further sparkle will continue across the neighborhood this Christmas with Sloane Square undergoing a yuletide makeover, with a magical pop-up featuring Santa's Grotto, seasonal food and drink, outdoor seating and a Bavarian curling rink for all the family.

Visit chelseachristmas.co.uk for the full programme of festive fun and for details on Santa's grotto and curling.





Carol concerts

GET INTO THE FESTIVE SPIRIT BY ATTENDING THESE LOCAL CAROL SERVICES AND HELP RAISE MONEY FOR A GOOD CAUSE

DECEMBER 1

PLACE2BE'S ANNUAL CHRISTMAS CAROL CONCERT
Sponsored by Cadogan, Place2Be's annual Carol Concert is the charity's longest running fundraising event, raising vital funds for children's mental health services. This year, guests will enjoy festive readings from the likes of Sophie Dahl, David Walliams, Paloma Faith, Ortis Deley and Jacob Anderson, as well as musical performances from award-winning musician Jamie Cullum, Sacred Heart Primary School and Laura Wright.

Holy Trinity, Sloane Street

DECEMBER 13

CHILDLINE'S MERRY LITTLE CHRISTMAS CONCERT
Following four years of sell-out success, Childline's Merry Little Christmas returns to celebrate its 14th year with spectacular musical performances.

Look out for celebrity guests and bid in a luxury silent auction to win the perfect Christmas gift. All guests will receive a drink and mince pie on arrival, and funds raised will go to Childline, which offers round-the-clock counselling to help children and young people deal with a range of psychological and social issues.

Cadogan Hall, 5 Sloane Terrace

DECEMBER 23

CAROLS BY CANDLELIGHT

Enjoy a sublime concert of carols and seasonal classics performed by the Mozart Festival Chorus and Orchestra, staged in full 18th-century costume in an evocative candlelit setting.

Cadogan Hall, 5 Sloane Terrace

DECEMBER 24

A DICKENSIAN CHRISTMAS

Savour the Christmas spirit with readings from Charles Dickens' inimitable *A Christmas Carol* and hear the very best of Victorian and classic carols, including *Silent Night*, *God Rest Ye Merry Gentlemen* and *Good King Wenceslas*.

5 Sloane Terrace

DECEMBER 20

THE BACH CHOIR AT CADOGAN HALL

The Bach Choir returns in full sonorous voice to Chelsea for its annual carol concert, delivering a charming selection of carols alongside the London City Brass band conducted by David Hill.

Old festive favourites will feature alongside new harmonies, including the winning entry in the annual Sir David Willcocks Carol Competition, which supports and encourages composers of all ages to write a new carol. Enjoy a magical evening of fun and festive cheer in the historic confines of Cadogan Hall.

5 Sloane Terrace



News / November

CADOGAN HAS PARTNERED with AccessAble, the UK's leading provider of disabled access information, to create detailed guides for the primary destinations in Chelsea. The new Access Guides provide facts, figures and photographs to help people plan their movements around the area, with information on everything from pedestrian crossings to accessible toilets. Residents and visitors will be able to use the guides to navigate destinations like the King's Road, Sloane Street and Duke of York Square.

Kate Neale, head of sustainability at Cadogan, said: "The ability to seamlessly move around an area should be accessible to all. These guides will empower residents and visitors with the accurate information they need to have a stress-free and enjoyable experience around the spaces and venues that make Chelsea such a special neighbourhood."

Cadogan's Access Guides can be found at sloanestreet.co.uk/your-visit, dukeofjorksquare.com/visit and kingsroad.co.uk/visit-us



CLIMATE ACTIVIST Greta Thunberg recently visited the Natural History Museum, where she is producing an event for schoolchildren exploring biodiversity loss. Greta, who was pictured holding a spectacular specimen of the critically endangered Philippine eagle, said: "Science is a warning signal but also one of the best solutions that we have, and we need to invest in it."

THE KING'S ROAD PRIVILEGE CARD continues to tempt local shoppers, with over 60 participating brands from across the neighbourhood. New offers include discounts at The Black Penny, Bluebird Chelsea, Lavender Green, Scribbler and when open mid-November, Self Portrait. Membership is available for those who live and work within two miles (terms and conditions apply) of the area and can be applied for at kingsroad.co.uk/privileges.



IT'S BEGINNING to look a lot like Christmas! The Anya's grotto experience at the Anya Village is back for 2022, with moonlit forests covered in crunchy snow and Father Christmas reading seasonal stories. The Christmas store sells gifts, decorations and hampers, while the Anya Cafe offers festive treats including gingerbread men and collectable biscuit tins. *The Village Hall, 11 Pont Street*



THE CHELSEA PENSIONERS and Royal Hospital staff recently held a drumhead service of remembrance for Queen Elizabeth II. The traditional drumhead service is conducted around an altar of regimental drums, providing soldiers with a place of remembrance for their fallen comrades. This special service, which allowed the pensioners to mourn and reflect, ended with a chorus of *God Save the King*.





DIPTYQUE'S NEW UK FLAGSHIP opens on November 18. The brand's largest UK store is designed to resemble a Parisian apartment, with a French mosaic entryway, Edwardian cornices and a monumental fresco drawn by French artist Claire Basler. This new boutique will house the brand's entire product offering, and will have space for private consultations and exclusive events.
161 Sloane Street



SOHO HOME has released a new festive collection which will infuse your interiors with holiday spirit. Browse Italian tableware with hand-painted foliage motifs, mouth-blown glassware inspired by the 1960s, tinted glass lighting designed to remind you of candlelight, and silk pyjamas that have been hand-painted by an in-house artist. The Soho Home fragrance range is now also available in warm, seasonal scents like *Leather & Oud* and *Fireside*.
6 Duke of York Square

MEKHANN

Hand Embroidered Textiles



84 Fulham Road, SW3 6HR | 020 7584 9490

mekhann.co.uk



THE ICONIC IMAGES GALLERY on Park Walk has unveiled five never-before-seen images of David Bowie, salvaged from a 1974 portrait session with Chelsea photographer Terry O'Neill. The newly discovered negatives show Bowie wearing a Freddie Burretti suit.



PARTRIDGES RECENTLY PRESENTED the Children's Surgery Foundation with a cheque for £7,500, raised during its World Chelsea Bun Awards. The donations will support the charity's campaign to buy an ultrasound vein finder for every paediatric surgical department in the UK. Lady Sophie Windsor, royal patron of the Children's Surgery Foundation, accepted the cheque.



THE SMALLEST HOUSE in Chelsea is for sale for £1.2 million. The 290 sq ft home, by St Luke's & Christ Church, was once a gravedigger's cottage and later a sweetshop. Owner Robin Swailes said: "What is beauty? To me, it's proportion. This house may be small, but it's nicely proportioned!" hardinggreen.com

Royalty / Warrants

SLOANE SQUARE MAGAZINE WAS DEEPLY SADDENED TO HEAR OF THE QUEEN'S DEATH AT THE AGE OF 96. CHELSEA HAS A LARGE NUMBER OF ROYAL WARRANT HOLDERS - WE LOOK AT WHAT'S NEXT FOR THE LOCAL SHOPS WITH THE ROYAL STAMP OF APPROVAL

Royally *EXCELLENT*

THE QUEEN AT CHELSEA FLOWER SHOW



What are royal warrants?

Dating back to the 15th century, they are permits which allow the recipient to display the Royal Arms. Warrants are granted to businesses that regularly supply goods and services to a royal household, whether that's crystal glass (as provided by William Yeoward Crystal at 270 King's Road) or toilet requisites (manufactured by Penhaligon's at 25 King's Road).

Do many Chelsea businesses have a royal warrant?

From Moyses Stevens to Turnell & Gigon and from Peter Jones to Smythson, plenty of local businesses bear the royal stamp of approval.

What happens to the Queen's warrants?

Her warrants became void on her death, although holders maintain the right to use her royal insignia for a further two years. Partridges and Jean Monro are two local businesses that hold a royal warrant from the Queen. They will now have the chance to reapply for their warrant – a process that will

involve proving their environmental credentials, as sustainability moves to the forefront of the national (and royal) consciousness.

What else should I know?

Brands can hold more than one royal warrant if they regularly supply goods to more than one royal household. Smythson is one of a select group of brands to hold three royal warrants, as stationers to the Queen, supplier of leather goods to the Duke of Edinburgh and suppliers of stationery and office equipment to the Prince of Wales (now King Charles III). Of course, Smythson's right to display the arms of the Queen and Prince Philip will expire two years after their deaths.

What happens now?

The monarch decides which members of the royal family have the power to grant warrants. It's expected that King Charles will bestow this right to William and Catherine, Prince and Princess of Wales, so a new set of businesses – including some Chelsea favourites – may receive royal approval.

JEAN MONRO, MOYSES STEVENS, PENHALIGON'S

Shooting stars



WITH THE WORLD CUP ON THE HORIZON, ALICE CAIRNS EXPLORES CHELSEA'S FOOTBALLING HERITAGE

LOVE IT OR LOATHE IT, football fever is sweeping the nation. The 2022 FIFA World Cup is due to kick off on November 20 – bringing with it a tide of hope, heartache, anger and elation.

Chelsea's own footballing legacy began in 1905, when businessman Henry Augustus "Gus" Mears bought the Stamford Bridge Athletics Ground in the hope of turning it into a football pitch. He originally offered the space to Fulham FC, but when they turned him down, he resolved to start his own club. After debating between names

(Stamford Bridge FC, London Athletic FC and Kensington FC were all suggested) he settled on Chelsea.

Known as the Pensioners because of the nearby Royal Hospital, Chelsea FC originally wore Eton blue – the racing colours of the club's first president, Lord Cadogan. The team built their following at an unprecedented speed, becoming the first London club with an average attendance of over 40,000.

Tragically, Gus Mears died in 1912 at the age of 37, before he could witness the

success of the club he had founded. In the century to come, Chelsea would go on to win 34 major trophies – including two UEFA Champions League titles, six first division titles, eight FA Cups and one FIFA Club World Cup.

In 1913, Chelsea welcomed their first non-English player (Danish international Nils Middelboe). They have since signed legendary players like Gianfranco Zola, Frank Lampard, Peter Osgood and Didier Drogba, as well as managers like José Mourinho, Antonio Conte, Carlo Ancelotti and more. Chelsea FC's historic connection with the Chelsea Pensioners continues, with a quota of free tickets at every home game allocated to residents of the Royal Hospital.

The club have also established an immensely successful women's team, Chelsea Women, who have been a dominant force since 2015. The first women's game at Stamford Bridge was played in 1920 by the Dick, Kerr Ladies team from Preston. However, a year later the FA implemented a ban that prevented women from playing on the grounds of any affiliated club. The women's game had gained enormous popularity during World War One, filling stadiums to capacity on a regular basis. But the FA felt the game was "quite unsuitable for females and should not be encouraged", and blocked its access to facilities and fans.



Above: Chelsea Women FC, Super League champions 2020-21

Opposite: There have always been good links between the club and the wider community

This ban wasn't lifted until 1971, by which point women's football had lost much of its momentum and was seen as little more than an inferior branch of the men's game. Chelsea Ladies, now Chelsea Women FC, was founded in 1992, but relied on bucket collections at men's games to pay for transport and accommodation. It wasn't until the 2004/05 season that the club became a financed part of Chelsea FC, eventually finding a new home at Kingsmeadow in Kingston-upon-Thames.

Chelsea Women FC have now won six women's league titles and four Women's FA Cups, while two Chelsea footballers (Millie Bright and Fran Kirby) started in the Lionesses' victory over Germany in the 2022 UEFA Women's Euro final.

Chester Bates of the Chelsea Women Supporters Club says: "I enjoy women's football more than the men's game. The players care even more, because they've had to struggle against this prevailing view that women aren't good enough to play football.

"The connection with the players is a lot better – you can speak to the players, they know who you are, and they appreciate your support. I'd encourage anyone to come along to a game."

Chelsea FC have also made an effort to welcome supporters from a diverse range of backgrounds. Gone are the days when the notorious Chelsea Headhunters stalked the stands of Stamford Bridge. Today, social

Chelsea FC 1906-07



responsibility programmes like the Chelsea Foundation fund initiatives focusing on employment, education, social deprivation, crime reduction and youth offending. At the same time, organisations like Chelsea Pride work to address prejudice and stamp out intolerance faced by fans.

“We started six years ago, and the club were extremely supportive,” says Tracy Brown, chair of Chelsea Pride. “They want to change the narrative around football fans, who have obviously massively adapted and changed over the years. LGBTQ+ fans now have a voice. Every year we do London Pride with the club, with a double-decker bus in Chelsea blue driving through the city.”

In recent times, much has changed for Chelsea FC. The club switched hands from long-term owner Roman Abramovich to a new ownership group led by Todd Boehly. Manager Thomas Tuchel was recently replaced by ex-Brighton coach Graham Potter, known for his unorthodox methods.



Time will tell how the club will fare in the competitive 2022/23 season, but with a legacy and a fanbase like Chelsea's, the Blues have plenty of reason to be hopeful.

And it's not just the professional game that thrives locally. Grassroots teams also flourish, with clubs like Kensington & Chelsea FC and Dingo FC, who are based on Sydney Street. Founder Salah Abraham says: “Football is about more than just kicking a ball. It's about mental health, self-worth and learning that life is tough, but that you can handle anything if you can learn to think under pressure.”



Frank Lampard holds the 2012 UEFA Champions League cup

Famous Chelsea supporters

The Blues boast their fair share of famous fans...

Richard Attenborough became a Chelsea fan after training with the team to get in shape for his role in 1948 film *Brighton Rock*

Bill Clinton has supported Chelsea since the late 1960s, when he studied at Oxford and visited Stamford Bridge

Gordon Ramsay played for the Oxford United youth team and trained with Rangers before a knee injury ended his footballing career. He's now a loyal fan of the Blues



FOR ALL YOUR TOMORROWS...



AURIENS

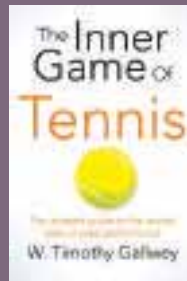
CHELSEA

CALL 0204 549 8000 OR VISIT AURIENS.COM

GEORGE ROUSSOS, SECRETARY OF
THE CHELSEA HANDBALL CLUB

The Inner Game of Tennis by Timothy
Gallwey

Although it's not a book about handball, I feel that *The Inner Game of Tennis* promotes principles that can be applied to virtually any sport, as well as any aspect of daily activity. In the context of sport, and more specifically, in the context of grassroots community sport, the book's principles are very relevant. By allowing yourself to become immersed in the present moment, within the few hours that you choose weekly to participate in physical activity, by embracing the social interaction that comes along, and by achieving mini-goals that elevate yourself within a controlled-competitive environment, it has helped me (and others) unlock our potential.



BOOK CLUB

Sporty reads

LOCAL BOOKWORMS PICK THEIR
FAVOURITE BOOKS ABOUT SPORT



GILES LYON, CO-OWNER OF
WORLDS END BOOKSHOP

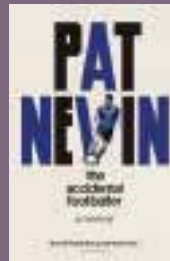
The Soccer Syndrome
by John Moynihan

First published in the build-up to England's Wembley World Cup win, *The Soccer Syndrome* is a celebration of this country's love affair with the game it created. Moynihan captures the mood of the national sport, from the days when star players got the bus home after games to the Swinging Sixties, when George Best became the fifth Beatle. His prose rattles off the page like a Keegan piledriver coming back off the bar, taking in games at Chelsea, waiting in vain for Tommy Lawton's autograph and watching the 1958 World Cup final in a bar in Paris. No less than a classic of sports writing.

**RICK GLANVILL, AUTHOR AND
OFFICIAL CHELSEA FC HISTORIAN**

***The Accidental Footballer* by Pat Nevin**

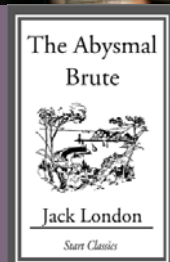
In his second book the former Chelsea and Scotland winger Pat Nevin shows himself as nimble and expressive on a keyboard as he was with a ball at his feet. Typical of the man, this is an unconventional footballer autobiography – more polymath than Plymouth away, as much Godot as ‘get stuck in, son’. From his Earl’s Court bedsit he explored everything arty, post-punk 1980s London could offer a young Glaswegian, but he is especially insightful on football’s transition from social pariah to global success, modestly relating his own contribution. By the end you’ll come to know him and his times, and may well be fonder of both.



MARTIN DIMITROV, FOUNDER AND COACH AT THE SQUARE BOXING CLUB

***The Abysmal Brute* by Jack London**

In this short but powerful novel, through love and sadness, happiness and disappointment, Jack London introduces us to the innocent, pure and inspirational side of the lonely and at the same time, beautiful sport of boxing. But along with this, he also reveals its dark and hurtful companion, dressed as business. My personal take on the book is that, despite distractions and obstacles on the sports field and in life, we must stay true to our nature, hold on to our values and always show discipline, dedication and sportsmanship in whatever sport we choose to practice, professionally or not.





THE HOLIDAYS ARE COMING

Looking for a chauffeur to transport you to your seasonal parties in style?

Inviting guests over for an indulgent dinner party, designed and crafted by a top-class chef?

In need of a personal assistant to research and pick up your holiday gifts?

Call us on +44 207 917 1803 to book your holiday staff today.

FIERCELY DISTINCTIVE | BUSINESS SUPPORT | PRIVATE | HOSPITALITY | HR | TECHNOLOGY | FINANCE
tiger-private.com

TIGER
Private

LekoGO
Eco - Friendly cleaning company



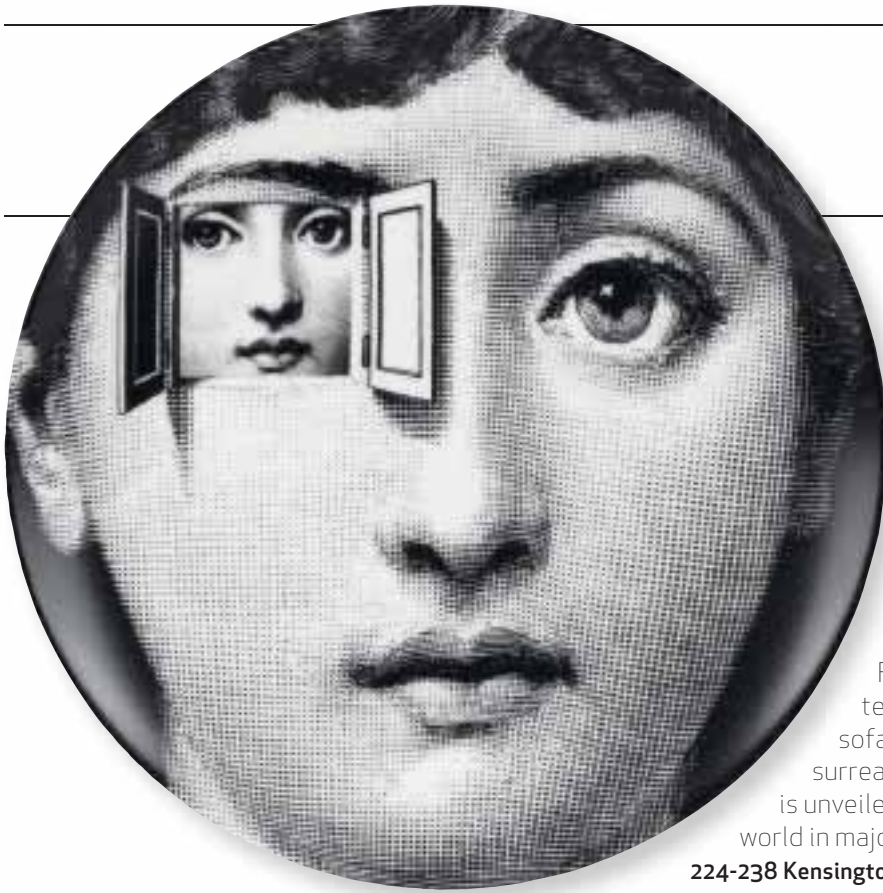
LEKOGO is the ideal solution for a reliable and safe way to keep your business, home or commercial premises sparkling.

Our service and our commitment to our customers.

Domestic cleaning | Commercial/Shop/Office cleaning | Move In & Out cleaning
Housekeeping services | Pet sitting.

Free visit from an expert for an estimate.

www.lekogo.com phone: 0203 740 8440



UNTIL FEBRUARY 19
Objects of Desire: Surrealism and Design 1924 - Today

This landmark exhibition at the Design Museum showcases the tangible influence of artists such as Salvador Dali and Man Ray on furniture, interiors, fashion, photography and film. From Dali's oversized lobster telephone to his Mae West Lips sofa, the creative boom birthed by surrealism's search for the subconscious is unveiled, revealing how it has shaped the world in major and unexpected ways.

224-238 Kensington High Street

NOVEMBER 1-19
Picturing Chelsea

Peter Harrington presents a collection of plein air etchings, lithographs and prints by Theodore Roussel. Born in Brittany, Roussel spent his working life in Chelsea at the turn of the 20th century. His works depict familiar scenes including The White Horse Pub on Parson's Green, as well as street views of Ediscombe Road, Cheyne Walk and King's Road.

100 Fulham Road



DECEMBER 1
Lunchtime Lecture: The Christmas Story

A lecture at the V&A will tell the Christmas story using well-loved paintings by Italian and Flemish artists, alongside other less well-known images. The museum's Paula Nuttall will explore the rich symbolism of Christmas imagery, including some unfamiliar aspects such as the midwives and Joseph's stockings.

Cromwell Road

NOVEMBER 10-13

Handmade in Britain

One of the UK's longest running contemporary craft fairs by Handmade in Britain returns to Chelsea this November, as more than 100 of the UK's most talented designers exhibit work ranging from ceramics and glass to sculpture and wood. From Waywood's handcrafted furniture to Terry Macey's coveted fashion line, visitors can secure Christmas gifts while meeting their talented makers.

Chelsea Old Town Hall, King's Road



NOVEMBER 25 - DECEMBER 23

Bulgari x Refik Anadol at Saatchi

Bulgari will exhibit an immersive installation in collaboration with the award-winning media artist and director Refik Anadol. Honouring the 75th anniversary of Bulgari's most famous icon, Serpenti, Anadol has harnessed the power of artificial intelligence to bring viewers on an immersive journey that follows an ever-changing snake. Visitors will be exposed to sounds and smells synonymous with Bulgari's finest fragrances.

Duke of York Square

UNTIL DECEMBER 10

A Light Left On

Eleanor May Watson's exhibition at the Foundry Gallery draws on May Sarton's poem as creative inspiration, with a complex and layered installation that is a visceral, intellectually stimulating and deliberately open-ended meditation on the concept of "home" and belonging.

39 Old Church Street



PETROSSIAN

FONDÉ À PARIS EN 1920

FINE FOOD – DELI – RESTAURANT



Opening in December 2022

6 Fulham Rd, South Kensington, London, SW3 6HG

www.petrossian.co.uk



@petrossianuk

Art / Photography

AN EXHIBITION of winning photographs from the Day in Your Life competition was recently held at Saatchi Gallery. Founded by BAFTA-winning artist Alison Jackson, the annual photography competition focuses on discovering new talent from budding and aspiring photographers, including hundreds of children from the local community across Kensington & Chelsea. The competition encourages entrants to capture a day in their life, from the ordinary to the extraordinary. Alison Jackson says “everyone should have a chance to shine. I started this photography competition to help cultivate, celebrate and create



MODEL: FAITH 14 YEARS; PHOTOGRAPH BY URSULA 14 YEARS – EARLS COURT YC



SONJU SHEELA ROBINSON 22

opportunity for undiscovered talent who may not have had the chance before – or believed they could. I was offered my first BBC award-winning TV series when I was fresh out of college in Chelsea, so I have made the prizes primarily educational and vocational, with a fantastic network of leading artists, arts organisations and businesses.”

The competition was open to entrants aged 7+, with open workshops held in youth centres, community centres, trusts and schools. The selection of prizes were designed to kickstart a career in photography, and included mentorships, prestigious courses and camera equipment.

Hugh Seaborn, chief executive of Cadogan, says “Cadogan is proud to sponsor such an impactful community project which offers life-changing opportunities to hundreds of aspiring young photographers and artists across the local neighbourhood – Alison cares deeply and while the competition is open to all, she focuses on directly reaching those who would not usually have this kind of privileged access to leading artists, arts

A DAY IN YOUR LIFE



FULL HEAD CROPPED. AVIRE BY SKY. H12.

organisations and mentors. A Day in Your Life has the power to change lives and uncover the creative visionaries of the future, opening doors for young people to high quality education and paid work in the creative industries.”

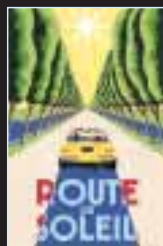
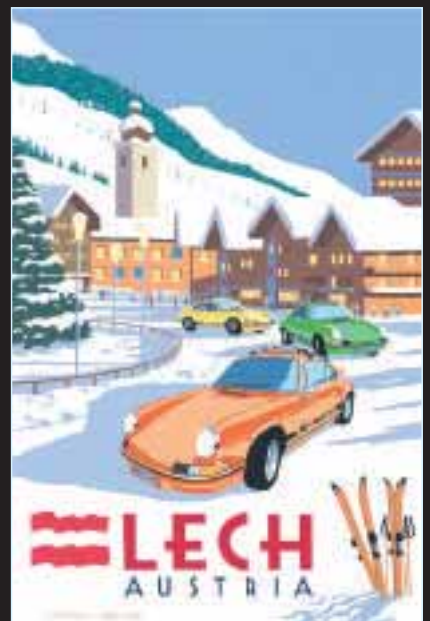
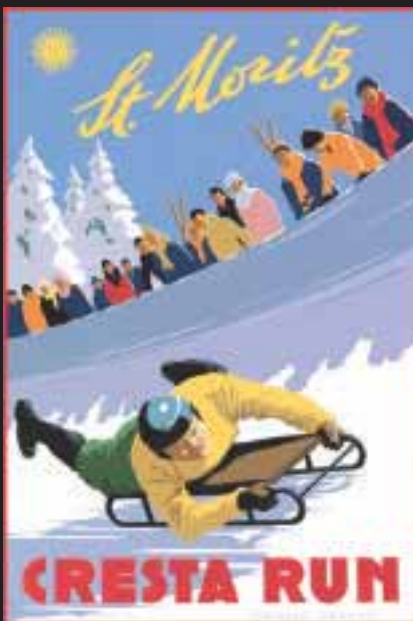
A Day in Your Life was judged by experts from the worlds of art, business and entertainment, all of them with strong links to the local area. This year, the panel included broadcaster Sir Trevor Phillips, photographer Rankin, musician Nick Rhodes, artist Dr Chila Kumari Singh Burman, and award-winning photojournalist Peter Dench.

To find out more, and to enter next year's competition, visit dayinyourlife.co.uk



PULLMAN EDITIONS

ORIGINAL, LIMITED-EDITION ART DECO POSTERS



Limited to editions of 280, our newly-commissioned Art Deco posters feature glamorous holiday destinations around the world, ski resorts in the European Alps, and the world's greatest historic automobiles. **Over 100 designs to choose from**, all printed on 100% cotton fine art paper, measuring 97 x 65 cm. **Priced at £420 each (inc. UK sales tax).**

Private commissions are also welcome.

 @pullmaneditionsposters

Pullman Editions Ltd
94 Pimlico Road
Chelsea
London SW1W 8PL

www.pullmaneditions.com

info@pullmaneditions.com

Tel: +44 (0)20 7730 0547



Our central London gallery

All images and text copyright © Pullman Editions Ltd. 2022

View and buy online at www.pullmaneditions.com

Jamal Neeclana, Johannesburg



AN UNMISSABLE
NEW EXHIBITION AT
SAATCHI GALLERY
SHINES A SPOTLIGHT
ON CONTEMPORARY
BLACK PHOTOGRAPHY
AND CREATIVITY.
THE GALLERY'S
PARTNERSHIPS
DIRECTOR LAURA
UCCELLO TELLS US MORE

Striking shots



Dana Scruggs, Fire on the Beach



Tyler Mitchell, *Untitled Hijab Couture*

Curator Antwaun Sargent says...

"Members of The New Black Vanguard are making fashion images that focus on an array of attitudes, depictions and poses and that reimagine notions of beauty, style and the status of the Black figure for their generation. In borrowing from and breaking with canons of traditional Black portraiture and fashion photography, the emerging new talent is creating new, self-referential visions of Black power that continue the work of normalising the representation of Blackness by diversifying the images that record its myriad forms."

Excerpt taken from The New Black Vanguard: Photography between Art and Fashion

SAATCHI GALLERY IS HOSTING an exciting exhibition of work by 15 black photographers.

The New Black Vanguard, which is on until January 22, is curated by American writer and critic Antwaun Sargent and was inspired by the idea that black style and beauty is rarely celebrated in the mainstream media.

The contemporary photographers featured in the exhibition have been chosen because they've helped to represent the beauty of black bodies to a broader audience, whether that's through images for ad campaigns, lifestyle magazines or even social media feeds.

"We always look for shows that deserve to have an audience, but which are still on the sidelines because museums and institutions are looking at the more traditional mediums and artists," explains Saatchi Gallery's partnerships director, Laura Uccello. "This show fits within that mission."

Featured photographers include Arielle Bobb-Willis, whose teacher gave her a camera when she was 13 and suffering from depression; Nadine Ijewere, who became the first black woman to shoot a *Vogue* cover in 2018; and Quil Lemons, who began taking photographs of his family because he wanted to represent the everyday black experience.

"A lot of the images in the exhibition are very much inspired by the paintings of the Old Masters," says Laura. "And also by things like 1960s photography and British portraiture. There are all these layers of influence that come from the past, which when added to the photographers' experiences as black creatives, make for really original images."

Many of the photographs on display were produced with the help of a team of black creatives, including models, stylists, makeup artists and nail technicians. The result is a series of pictures that challenge stereotypes about what it means to be a black man or woman.

"The black identity has been oversexualised for many years," says Laura,

“but when you look at the images in *The New Black Vanguard*, you’re looking at very ethereal figures. Sex appeal is no longer the focus. Many of the images celebrate femininity, even with male subjects.

“Particularly in America, the press and other publications have told you to fear black men – but here there’s this beauty and softness and gender fluidity to their representation, so that you almost can’t tell if the figures are male or female.”

One of Laura’s favourite photographs from the exhibition is Tyler Mitchell’s untitled picture of a black woman wearing a couture hijab. It’s a striking image, and one that pays homage to the diversity of the black experience.



Nadine Jewere, *Untitled*



Quil Lemons, *New York*

“A lot of times, when we talk about black identity, we forget about the black diaspora,” she explains.

“That image is so striking, so beautiful. Her pose and gaze are something you see in Old Master portraits, and you see the way that the pose empowers her. Her authority is really striking. That image really sets the tone for the show, because it shows how wide and varied black identity is across the world.”

The exhibition, which is supported by Burberry, contains work by photographers from all over the globe, with an even mix of female and male photographers.

“It’s an exhibition that’s full of collaboration, exploring art and fashion through the lens of inclusivity and diversity,” Laura says.

“Many of the photographers exhibited here know each other – some of them went to school together, or share studios. So it’s very special to see their work in dialogue together.

“At its core, *The New Black Vanguard* is about giving a platform to a group of photographers who really merit it, who are doing something very exciting and recalibrating our views of black beauty. That’s something we’re very excited about at Saatchi Gallery.”

Your New Home in an Italian Village

ITS ITALY HAS SIMPLIFIED THE PROCESS OF BUYING AND MANAGING PROPERTIES IN ITALY

ANYONE WHO HAS VISITED ITALY knows what it's like to fall in love with regions like Sicily and Sardinia, or the famous rolling hills of Tuscany.

Many of us have even dreamed of moving to live there. But if Italians are warmly welcoming to their many tourists, the country's bureaucracy is far from friendly: buying a property can be a daunting process.

Now, however, a London-based start-up, ITS ITALY, is taking the

strain out of buying a slice of 'la Dolce Vita'. They offer hassle-free purchases of regenerated apartments and charming stone houses in small, ancient villages across more than 50 municipalities.

The properties can be virtually turnkey: not only fully restored, but beautifully furnished.

Selecting a property and having it refurbished typically takes about six months and you'll be told what it's going to cost upfront. There is also the option to have it financed for up to 90 per cent of the final value. Our business is serving a double purpose – helping foreign buyers buy more easily, while regenerating many of these depopulated villages.

A spokesman for ITS Italy, said: "It all started when we were asked by friends to help purchase small flats and houses on a tiny budget. They loved the idea, but were put off by the notorious Italian bureaucracy and complex buying process. We saw a business opportunity and it has taken off."

The company has already attracted more than 10,000 registrations in less than 2 years.

An additional benefit is that Italy is a tax haven for anyone who settles with 70-90 per cent tax exemptions for new residents for the first five years, jumping to 10 if they invest in property.

HOW IT WORKS

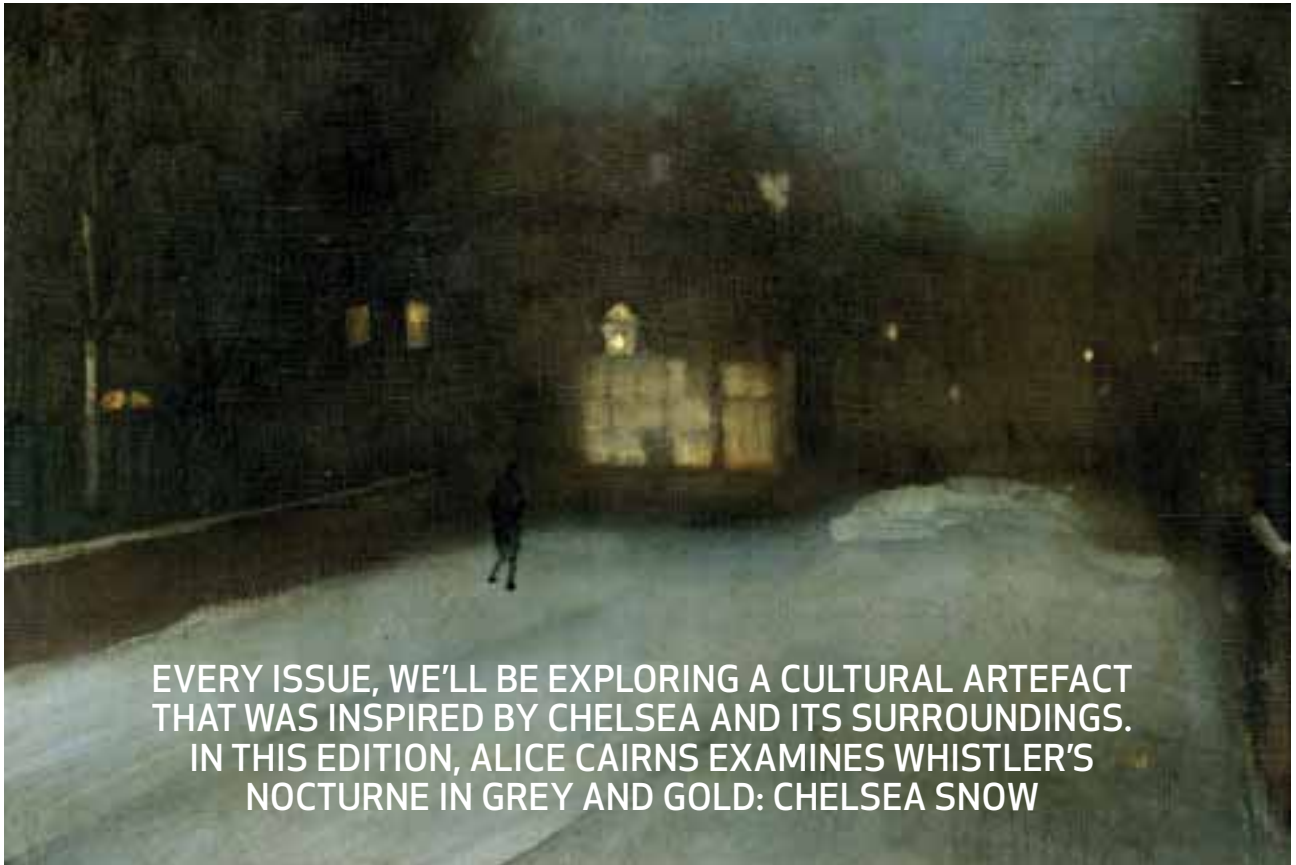
To join the scheme would-be buyer must first register on the ITS ITALY website [www.itsfor.it]

They will receive periodic newsletters outlining available properties. From the end of July all properties will be displayed online and optionable directly from the website. Potential buyers then have three options of how to purchase:

- Pay a secured deposit, normally between 10 to 30 percent, and expect to pay the full amount when the property is ready, usually within six months.
- Buy through a trust. Using a British lawyer the trust will deal with all the process.
- Pay a secured deposit and stagger the remaining amount over an agreed period up to ten years. Once you have paid the balance, you can register the property in your name.
- Finally, ITS ITALY, can also manage the property and, if you wish, rent it out



Culture / Whistler's Nocturne



EVERY ISSUE, WE'LL BE EXPLORING A CULTURAL ARTEFACT THAT WAS INSPIRED BY CHELSEA AND ITS SURROUNDINGS. IN THIS EDITION, ALICE CAIRNS EXAMINES WHISTLER'S NOCTURNE IN GREY AND GOLD: CHELSEA SNOW

What is it?

One of James Abbott McNeill Whistler's famous nocturnes, or night views, which show the shadowy city after dark.

Why Chelsea?

The American-born Whistler moved to 96 Cheyne Walk in 1859, at a time when Chelsea was a bohemian suburb removed from the hustle and bustle of the city. He spent much of his working life painting the streets and riverscapes of Chelsea, and on Sunday mornings he'd hold elaborate breakfasts for a crowd of local dandies and wits including Oscar Wilde and Lillie Langtry.

When was it painted?

In 1876. The yellow glow comes from the gas lamps which illuminated London at that time, providing less light than a modern

Cultural artefact

25-watt bulb. There would have been pools of total darkness between each lamppost.

What's it about?

In his essay *The Red Rag*, Whistler describes his work as "symphonies" in colour, and argues that his paintings aren't intended to tell the kind of story you'd find in a Dickens novel. On the subject of the lonely figure in *Chelsea Snow*, he said: "I care nothing for the past, present, or future of the black figure, placed there because the black was wanted at that spot. All that I know is that my

combination of grey and gold is the basis of the picture."

What should I bear in mind?

The painting we see now may be darker than Whistler intended. He often began by painting a dark wash of paint over his canvas. As the upper layers of paint become translucent with age, that dark ground is more visible, which darkens the overall appearance of the painting.

I'm feeling artistic...

Why not visit Green & Stone of Chelsea, the art supply shop that was established in 1927. In nearly 100 years, it has supplied the likes of David Hockney, Bob Geldof, King Charles III and Adele.

If there's a cultural artefact you'd like us to explore, drop us an email at alice@pubbiz.com

*Chelsea
Physic
Garden*

FOUNDED
1673



Chelsea Physic Garden Christmas Fair

Thursday 24 - Sunday 27 November

Book online at:

chelseaphysicgarden.co.uk/christmasfair

Dance / Ballet

DOROTHY IND IS THE FOUNDER OF THE CHELSEA BALLET SCHOOLS, WHERE LOCAL CHILDREN HAVE LEARNT TO DANCE FOR 40 YEARS. ALICE CAIRNS FINDS OUT MORE



A 2019 PERFORMANCE OF THE NUTCRACKER

Called to the barre

NOBODY EXPECTED DOROTHY IND to head up her own ballet empire – least of all her parents. When I meet the founder of the Chelsea Ballet Schools at her home in Chelsea, she tells me that professional success was the last thing she'd been raised to expect.

“I was brought up to think that I wouldn't have a career, I would simply marry,” she says. “But I met my husband when we were students, and in those days my mother would have died of shame if we'd spent one night together before marriage. So we married very young, and therefore I had to work.”

A talented dancer, Dorothy put an advertisement in

the *Times* offering ballet tuition. In 1982, she was listed in *The Official Sloane Ranger Handbook* as the new ballet teacher on the Chelsea block, although her class at that time consisted of just three pupils.

But what began as a necessity quickly became a pleasure. Forty years since she started out, Dorothy's ballet school now boasts several thousand students and a large network of alumni that stretches across the country.

“By the time I could have stopped working, I loved it so much that I didn't want to,” she says. “In fact, my husband and I are both working now, even though we're



DOROTHY IND AT HOME IN CHELSEA



PUPILS AT THE CHELSEA BALLET SCHOOLS

a long way past retirement age. I shall keep going as long as I can.”

Dorothy is well aware that ballet can be a punishing pursuit, and one in which only a lucky few can hope to find a full-time career. Nevertheless, she believes that time spent at the barre is never wasted.

“Most of our pupils don’t go on to do ballet professionally,” she says. “But you don’t learn the piano to become a concert pianist – you do it because you love it. The same is true with ballet. I see how much the

children love to dance – and if they love it, it has to be something good.”

With its wealth of performance venues and its community feel, Chelsea has proved the perfect spot for Dorothy’s ballet school. In the four decades since she founded her company, she’s never been tempted to move her HQ elsewhere.

“Everyone knows one another, which is a lovely feeling,” she says. “As a ballet teacher, I have taught almost every child who has lived on my street. I am continually seeing people out and about who say, ‘Don’t you remember me? You taught me!’ Of course, all that remembering is getting harder now we teach thousands of pupils every year.”

Christmas is a particularly important time for the Chelsea Ballet Schools. Every year, the pupils stage a gala performance of *The Nutcracker* with the help of a very illustrious partner: the English National Ballet. It’s a highlight of the calendar, and a chance for the children to perform on one of London’s most prestigious stages.

“About 80 of our children take part, along with the stars of the company and the full English National Ballet Philharmonic Orchestra,” Dorothy explains. “To perform on the stage at the London Coliseum is a wonderful thing for our children – a lifetime memory for them.”

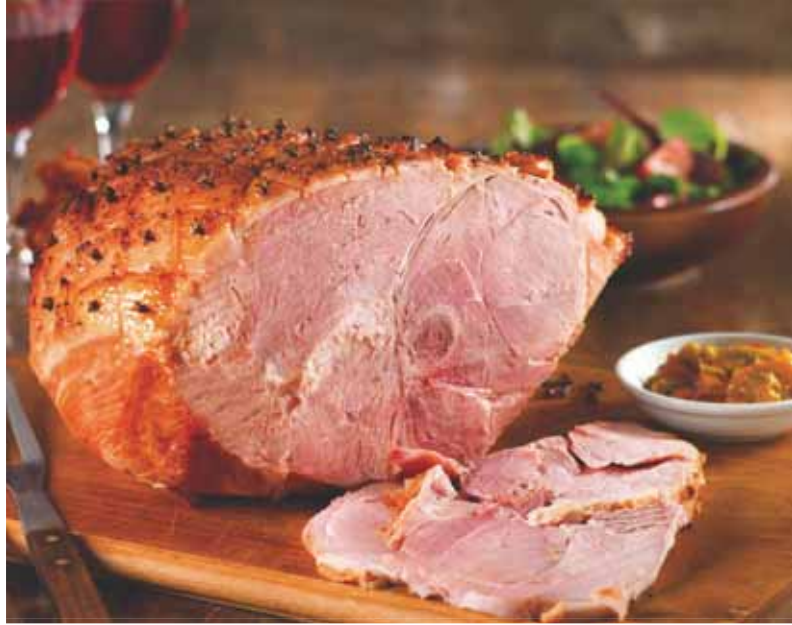
Rehearsals are now underway for the production, which will take place on December 19. At this year’s performance, Dorothy will be remembering the woman who inspired her own ballet dreams all those years ago.

“Eve Pettenger was my teacher at the Arts Educational School,” she says. “I didn’t have as much training as the other pupils, so Eve used to come in every morning at 8am and give me an extra private lesson. She was the most

dedicated, amazing teacher, and she taught me so much. I was able to nominate her for an MBE – I went to the palace with her to receive it, and then afterwards we went to the Ritz for lunch.

“She supported me in everything I did and when she died a year ago, she left me £2,000 to put towards this *Nutcracker* gala. I trust that we will do her proud.”

The Nutcracker Christmas Gala will be performed on December 19. chelseaballet.com



Supplying 'Good Things for the Larder' For 50 Years

For all the latest news, events & products visit: www.partridgesco.uk

2-5 Duke of York Square, SW3 4LY

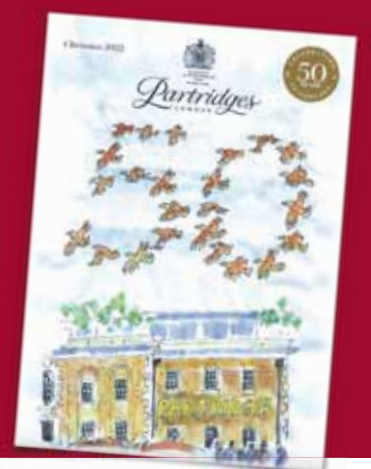
E: shop@partridges.co.uk

T: 020 7730 0651

Follow us



Partridges 50th Anniversary
Christmas Catalogue:
Download Here



Food / News



A NEW BAR and restaurant has opened on the site of the Jam Tree. Former owner Ashley Letchford and the Riding House Cafe's Clive Watson are the duo behind King's House, which offers British-Basque food cooked by *MasterChef* winner Dhruv Baker. The menu ranges from Txuleton steak to grilled fish with butter beans and chorizo, as well as Spanish bar snacks, weekend brunches and Sunday roasts.
541 King's Road



STICKS 'N' SUSHI has launched a new menu with more plant-based options than ever before. Combining traditional sushi with yakitori sticks from the grill, it features brand-new dishes such as yellowtail kingfish with yuzu miso, spring onion yuzu kosho and ponzu. All sauces and butters are vegan friendly, while the new Nasu Aburi nigiri is a plant-based nigiri made with seared aubergine, fermented green chilli and yuzu.
113-115 King's Road

PARTRIDGES IS SELLING its golden anniversary hamper in perfect time for Christmas. Launched to mark its 50th anniversary, the hamper comes stuffed full of treats, including Moët & Chandon champagne, duck terrine, L'Aquila mushroom and truffle sauce and Mr Shepherd's coffee, making it the perfect gift for foodies.
Duke of York Square



Food / News

GAIL'S BAKERY on the King's Road has partnered with Natoora on Pavilion Road to create a range of delicious soups using ingredients that have been sourced directly from farmers and independent producers. Launched in October with the delicate pumpkin and farrow and catalogna chicory, lemon and white bean flavours, these soups boast seasonal ingredients and a traceable supply chain.
209 King's Road



KUTIR, Chelsea's much-loved modern Indian restaurant, has been voted restaurant of the year at the British Restaurant Awards. Founded in 2018 by Michelin-starred chef Rohit Ghai and Abhi Sangwan, its signature dishes include masala prawns, guinea fowl biryani and truffled quail naan.
10 Lincoln Street

A MEXICAN RESTAURANT and margarita bar has opened in Chelsea. Mestizo, which serves diverse and authentic Mexican food, was launched in London 17 years ago and has moved to the King's Road following the success of its Camden restaurant. The margarita bar draws on a range of ingredients mixed with tequila, including hibiscus, lavender, mole (a traditional Mexican sauce) and lychee.
392 King's Road



HANS'

BAR & GRILL



JOIN US IN THE HEART OF CHELSEA FOR SOME WARM FESTIVE CHEER

Hans' Chef and his merry brigade have prepared an array of wonderful menus for the holiday season. Book your Christmas party, whether corporate or private, with a special festive menu from 21st November right up until Christmas Eve. Or join us for the big day so that you do not miss out on the delicious Christmas Day four course set menu.

For reservations, call +44(0)20 7730 7000

or visit: [hansbarandgrill.com](https://www.hansbarandgrill.com)

Follow us: [@hansbarandgrill](https://www.instagram.com/hansbarandgrill)



Christmas FEASTING

CHELSEA CHEFS AND RESTAURATEURS DISH OUT THEIR
TREASURED FESTIVE MEMORIES AND THEIR TOP TIPS FOR
DELIVERING THE PERFECT CHRISTMAS ROAST.
AS TOLD TO WILL MOFFITT

ALEX HARPER
Executive chef at the
Cadogan Arms

I love the smells of Christmas. Wood fires, red wine, Christmas spices, roast potatoes cooking in duck fat, pigs in blankets cooking in butter, Christmas pudding – the smell is often better than the taste.

To deliver the perfect Christmas roast you should...

brine your meat before cooking to make sure it's tender and juicy.

The one mistake everyone makes when it comes to



Christmas cooking is... taking too much on. Organisation and preparation are key. If you get most of the preparation done the day before, then on the day it is just a case of cooking the meat and warming the garnishes.

The most underrated part of the Christmas meal is... sprouts. I cook mine with plenty of butter, bacon and chestnuts.

The most overrated part of the Christmas meal is... turkey. I personally prefer goose or a good quality chicken.

Food / Christmas

PHIL HOWARD

Two Michelin-starred chef and co-owner of Elystan Street

Christmas is all about familiarity and nostalgia for me – and nothing too sophisticated. There's no need for change or doing anything differently – it only happens once a year after all. Christmas is smoked salmon, the mother of all roasts and a magnificent Christmas pudding. My wife Jennie knows how to make a house sparkle like no one else – and this, with kids, background carols and crackling fires is all it takes.

To deliver the perfect Christmas roast you should...

get the prep done the day before, clear the kitchen of anything not needed to create additional space and think carefully about your cooking equipment and facilities. Make sure the turkey has had at least three hours at room temperature before going into the oven.

The one mistake everyone makes when it comes to Christmas cooking is...

trying to do too many things. A few wonderful things done well is so much more delicious than a plate piled high with tired, lukewarm, overcooked things.



Mince pies from Cadogan Arms



LEWIS JOHNSON

Head chef at the Fox & Pheasant

The first time I cooked the entire lunch by myself I was 17 and had gone all out. I made my own bread for the starters and boned out the turkey legs, stuffed and rolled them and it went down perfectly. Admittedly I did spend two hours preparing sprouts for my granddad only to throw them in the bin by mistake.

To deliver the perfect Christmas roast you should...

get the gravy done ahead of time. I make mine on Christmas Eve. Take all the wings and giblets off the turkey and roast them hard then add some vegetables. Make sure it's nice and caramelised then add fresh

Food / Christmas

herbs and plenty of garlic, deglaze with a decent amount of wine, reduce that down then add stock or water and simmer and reduce again for a few hours. On Christmas Day, have it simmer away. Add any resting juices from the turkey and beef and a good amount of butter to richen it up.

The one mistake everyone makes when it comes to Christmas cooking is...

waking up in the early hours of the morning to put the turkey in the oven. An average turkey will only need two hours to two and a half, and about an hour and a half resting. As the turkey is resting I prep and cook my vegetables. Then everything comes together around the same time with no stress.

The most underrated part of the Christmas meal is...

the leftovers. You can't go wrong with bubble and squeak, turkey curry and beef sandwiches. My grandmother freezes any unused gravy and uses it in stocks for soups.

The most overrated part is...

Christmas pudding. I find it too stodgy and heavy at the end of the meal. I prefer a trifle or just another glass of champagne.



FIONNAN FLOOD

Head chef at the Chelsea Pig

Growing up Christmas always involved a timeless breakfast of smoked salmon with scrambled eggs, all served up on a hearty slab of brown soda bread. Lunch would then consist of goose with rosemary roast potatoes at my family home in County Wicklow, Ireland.

To deliver the perfect Christmas roast you should...

get organised. Any preparation you can do the day before will make life a great deal easier. You can also never go wrong with a glass of bucks fizz on Christmas morning to help the cooking process along.

The one mistake everyone makes when it comes to Christmas cooking is...

putting too much pressure on yourself to deliver a standout meal. The most important thing is spending the day with people you love, while remembering to relax and enjoy yourself.

The most underrated part of the Christmas meal is...

Brussels sprouts. They really don't get the credit they deserve. They're an absolutely delicious vegetable packed full of flavour, and can be cooked in so many different ways.

The most overrated part of the Christmas meal is...

Cranberry sauce. It's just not my thing at all.





sachi

Japanese restaurant & cocktail bar in the heart of SW1.

Join us for a celebration of Japanese food,
drinks and culture inspired by its regions.

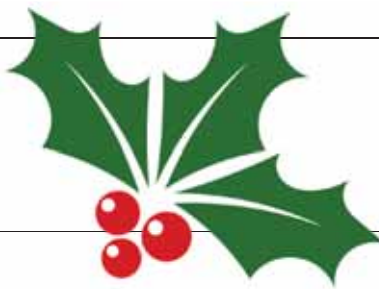
Sachi is now open for lunch, dinner and
late-night cocktails. Walk-ins welcome.

Bookings:
sachi@pantehnicon.com
+44 (0) 207 034 5405

PANTECHNICON

19 Motcomb St. London SW1X 8LB

Christmas / Gift guide



LUMINOUS CREAM
SHADOW IN FAITH
£32, Cosmetics A La
Carte, 192 Pavilion Road



SLOANE STREET GIFT CARD
sloanestreetgiftcard.co.uk

STOCKING FILLERS

SILK AND SATIN
HOT WATER
BOTTLE COVER
£185, Emilia
Wickstead, 152-
153 Sloane Street



WATERMELON
LOCKHART T-SHIRT
£40, Love Brand & Co,
5 Park Walk



That's a wrap

FIND CHRISTMAS PRESENTS
FOR FAMILY AND FRIENDS
IN CHELSEA'S BOUTIQUES

JACKSON BOW
BARRETTE
£32, Free People, 38-39
Duke of York Square



EAU ROSE PARFUM
£140, Diptyque,
161 Sloane Street

AUTUMN LEAVES RING
£14,750, Theo Fennell,
2 Garrison Square,
Chelsea Barracks



GLITZ
AND
GLAM

**JIL SANDER
BOOTS**
£425,
Lampoo, 31
King's Road



**QUEENIE
EQUUS ROBE**
£3,495, Olivia
von Halle, 190
Pavilion Road



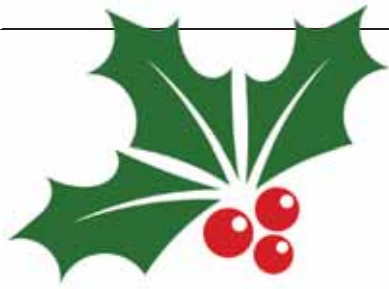
**GUCCI ROUGE
DE BEAUTÉ**
£36,
Peter Jones,
Sloane Square

**CUP
HOLDER**
£125, Anya
Hindmarch,
16 Pont
Street



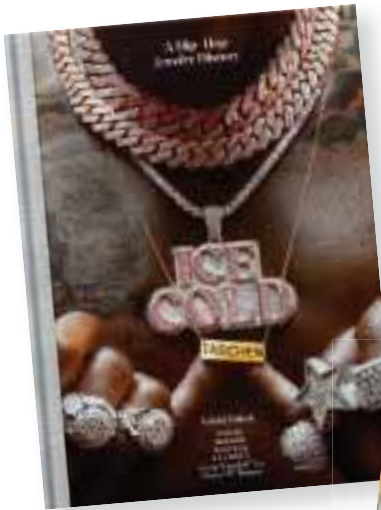
**SECRET GARDEN
DROP EARRINGS**
£12,000, Boodles,
6 Sloane Street



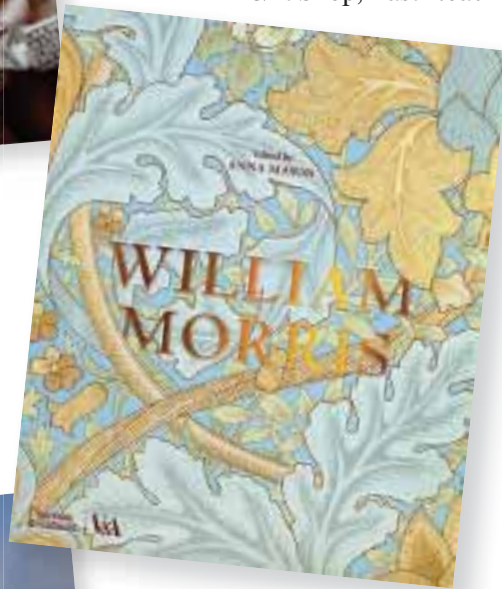


WILD ABOUT CHELSEA
Journey through Chelsea
with photographer
Andrew Wilson.
£21.99, Royal Hospital
Gift Shop, East Road

**READERS
AND
WRITERS**



ICE COLD
A history of hip-hop
jewellery featuring 40
years of iconic imagery.
£80, Taschen,
12 Duke of York Square



WILLIAM MORRIS
A beautiful,
illustrated study
of the designs of
William Morris.
£50, V&A Shop,
Cromwell Road

**FIVE YEAR KEEPSAKE
JOURNAL SET**

Record five years of memories with
this collection of hardcover journals.
£65, Papersmiths, 170 Pavilion Road



BUILT IN CHELSEA
Dan Cruickshank investigates three-
centuries of Chelsea's fascinating
architecture.
£30, Waterstones,
158 King's Road



**THE SNOWMAN
BY RAYMOND
BRIGGS**
A first edition
presentation
copy that's
inscribed by the
author.
£1,500, Peter
Harrington, 100
Fulham Road

Christmas / Gift guide



APPLE WATCH
£369, Peter
Jones,
Sloane Square



**THE MODEL ONE
SCOOTER**
£990,
The Conran Shop,
81 Fulham Road

**GADGET
GURUS**



DIFFUSER
£80, The White
Company,
4 Symons Street



HEART RATE BAND
£80, Peloton,
110-112 King's Road



**SONY NECKBAND
SPEAKER**
£269, Sevenoaks
Sound & Vision,
403 King's Road



POWER CHARGER
£12, Flying Tiger
Copenhagen,
234a King's Road



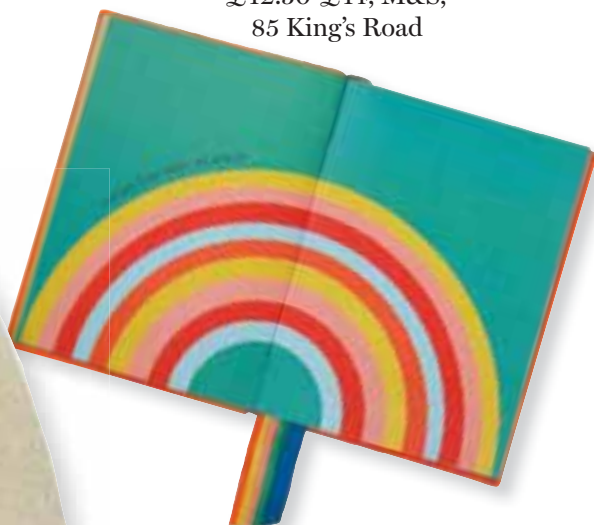
SAFARI FINGER PUPPETS
£4, V&A Shop, Cromwell Road



**ANIMAL PRINT KIDS
PYJAMAS**
£12.50-£14, M&S,
85 King's Road

LITTLE ONES

**ALMIRE
SWEATER**
£122, Bonpoint,
6f Sloane Street



MY FIRST SMYTHSON
Designed to encourage a new
generation of storytellers.
£175, Smythson,
141-142 Sloane Street



**NATURAL FABRIC
ART KIT**
£24.50, Peter Jones,
Sloane Square



**GIRLS ALL-
OVER BUNNY
JUMPER**
£60, Trotters,
34 King's
Road

Make a wish – Generational Wealth

VICTORIA FAIRLEY, PARTNER AT CRIPPS LAW FIRM, EXPLAINS HOW TO CARRY OUT SUCCESSION PLANNING AND ENSURE YOUR PERSONAL WISHES ARE FOLLOWED.

WHEN THINKING ABOUT THE FUTURE, you naturally want the best for your loved ones, particularly after you've gone. That's why writing down your wishes for how you'd like your estate to be managed is time well spent.

Putting a Will in place should always be top of the agenda when starting any succession planning. Your Will transfers your assets to those you trust most to carry out your wishes, ensuring they have sufficient powers to administer your estate. It can be tailored to give your family as much discretion or control as you'd like.

Write a 'letter of wishes'

A Will must include certain formalities which can make it tricky to provide more human guidance to those carrying out your wishes. A way around this is to draft your Will in flexible terms (to give those responsible a wide discretion) while also writing a 'letter of wishes'. A letter of wishes contains non-binding statements

about what you want to happen. It's an effective and powerful tool which provides more scope for transferring your personality onto the page.

A letter of wishes should be personal to you. Its informality makes it easier to involve your family in your succession planning, allowing you to create a clear roadmap for how your wealth will be structured and passed from generation to generation.

An added benefit is that once your Will is in place, you can update your wishes, in a cost efficient manner, as your family circumstances and finances evolve. Further letters can amend your guidance without the need to sign new formal documents, taking the stress out of ordering your affairs.

Make your wish today

While it's natural to focus on the here and now, taking the time to set up flexible succession structures today will help to

prevent potential difficulties arising in the future - making things easier for your loved ones.

To find out more about how to structure your Will and the most effective way to communicate your wishes, please call a member of the Cripps' private wealth team on 020 7591 3333 or email Victoria.fairley@cripps.co.uk



Cripps

Fashion / News

ASTRID & MIYU has launched its new Aura collection, inspired by mysticism, star signs and the cosmos. A highlight of the range is the reimagined mood ring – a grown-up interpretation of the childhood favourite, with a stone that shifts through six different colours to reflect your state of mind.

192 King's Road



QUINN HARPER has launched a new range of flower girl dresses inspired by royalty. There are more than 50 styles in the collection, ranging from simple gowns to elaborate creations complete with trains and hand embroidery. The brand also offers accessories like beaded tiaras, flower headpieces and lace capes.

331 King's Road

LOUIS VUITTON has released a new capsule collection of leather goods to celebrate the 2022 World Cup. Each of the five pieces features the Damier motif, embossed to recall the movement of the net as a goal is scored. The leather tags are shaped like league badges, while the protective bottom studs are shaped like football cleats.

190-192 Sloane Street



CASSANDRA GOAD



DECIMUS

Silver or gold
enamel rings
with or without
diamonds

Cassandra Goad
147 Sloane Street
London SW1X 9BZ
Tel: 020 7730 2202

cassandrಾಗoad.com

Fashion / News

LK BENNETT has partnered with Thrift+ to give your clothes a new lease of life. Customers will have the option to receive a free Thrift+ x LK Bennett clothing bag with any order, which they can fill with their preloved clothes. For any pieces sold, you will receive credits to donate to a charity of your choice or to spend on items on the Thrift+ website.
Duke of York Square



FREYA ROSE has opened a new boutique in Chelsea, having started her business with a loan from the Prince's Trust. Freya's new Woven for Women jewellery collection is handmade by artisan jewellers using a rare east Indonesian technique. Founder and designer Freya said: "The concept behind the weave is that while light, delicate and feminine, it holds such strength – reflecting how women are stronger together."
50 Fulham Road



MONICA VINADER is now offering wedding styling appointments. These one-to-one sessions last for one hour, and are led by a dedicated stylist who will provide tips on accessorising for your big day. Your appointment will also include complimentary drinks and same-day engraving to personalise your pieces, as well as 15 per cent off the price of your purchase.

71-72 Duke of York Square

THEO FENNELL



UNIQUE JEWELLERY AND SILVERWARE

THEOFENNELL.COM

BUY & SELL PRE-LOVED LUXURY

Experience effortless selling with free home collection, private appointment or express drop-off in our Chelsea Boutique.



LAMPOO

Lampoo, 31 King's Road, London, SW3 4RP



Find out more

*PARTY
time*

DRESS TO IMPRESS
FOR THE FESTIVE
SEASON

**SOMERSET BY
ALICE TEMPERLEY**
Red check tie front
jumpsuit, £99, Peter
Jones, Sloane Square

Fashion / Women

ESSENTIEL ANTWERP
Happy hair slide, £65,
27a Sloane Square



LK BENNETT
Ramplung red
dress, £699, Duke
of York Square



GANNI
Gold denim jeans,
£315, 94 King's Road

RIXO
Kendra
Pistachio Poppy
jacquard dress,
£275, 104
King's Road



MONSOON
Rory embroidered
jacket, £110,
Peter Jones,
Sloane Square



PINKO
Faux fur bomber jacket,
£429, 102 King's Road



DI MINNO
Diva shoe,
£655, 148
Sloane Street

M&S

Slogan crew-neck Christmas jumper, £25, 85 King's Road



SUNSPEL

Paul Weller merino zip cardigan, £395, 73 Duke of York Square



THE KOOPLES

Beige cardigan, £240, 36 King's Road

OLIVER BROWN

Carlyle velvet jacket, £595, 75 Lower Sloane Street



HACKETT

Fair Isle jumper, £210, 137-138 Sloane Street



SIRPLUS

Green cashmere crew-neck jumper, £395, 178a King's Road



TOAST

Cheaney Elliot Derby shoes, £385, 205 King's Road



Fashion / Kids



BONPOINT
Flavie party
dress, £364,
6f Sloane Street



JACADI
Baby boy
intarsia pattern
jumper, £55,
156 King's Road

PETER JONES
Zebra print vest,
£24, Sloane Square



AMAIA
Razorbil coat in navy,
£150, 14 Cale Street



**THE LITTLE WHITE
COMPANY**
Novelty Christmas
pudding hat, £16,
4 Symons Street

OFFICE
Dr Martens junior
1460 lace-up boots,
£69, 58 King's Road



**IL
PORTICCILO**
Trousers in
green, £50, 123
Sydney Street





Alexa Court, Lexham Gardens, W8 6JL

A Spectacular 933 sq ft Two Bedroom apartment on the second floor (with lift) of a handsome period building that has been meticulously re-fitted and refurbished by the present owner and so is ready to move into. The property is flooded with natural light and the open plan reception/dining/kitchen with 3.11m ceiling height faces due south with a terrace offering peaceful garden views.

Entrance hall : Open plan Reception/Dining/Kitchen : Master Bedroom : Ensuite Bathroom :
Second Bedroom : Shower Room : Balcony : Lift : Porter

Floorplan from justin@proprium.co.uk

Share of Freehold £1,875,000

www.proprium.co.uk
020 7589 6298
justin@proprium.co.uk



PROPRIUM
Established 1974



Bohemian

THE FASHION SCHOOL HAS A NEW, LARGER HOME JUST OFF THE KING'S ROAD. ALICE CAIRNS FINDS OUT MORE

rhapsody

BOHEMIANS, DANDIES, PUNKS and Sloane rangers... when it comes to fashion, Chelsea has seen it all. What better place for the Fashion School to call home?

First established in 2012, the school began promoting sustainability and slow fashion long before it was cool. Founder Caroline Gration and her team have now opened a new and improved London base at 6 Burnhall Street, just off the King's Road.

"Chelsea has always been part of my history," says Caroline.

"When I was young, my family would bring me here on a Saturday to visit the shops and grab a snack at the Chelsea Drugstore. I've strutted down the King's Road with hair dyed every colour under the sun!"

After studying fashion at the Royal College of Art and working as a lecturer, designer and trend illustrator, Caroline wanted to share her love of the industry with the next generation. The Fashion School originally offered sustainable sewing classes and workshops for children aged six-plus, but has since expanded to cater for the entire family – including adults.

"If you're breathing, we have space for you!" Caroline says. "Bring your dog too, we don't mind. We believe that sewing has something to offer anybody, at any age.

"With our adults, a lot of them have high-profile, intense jobs, so when they come here it's mindful, it's relaxing. There are no deadlines, and we've never assessed anything in our lives – we believe that if you've made it with your own hands, it's great."

Fashion / Fashion School



JODIE GLEN-MARTIN (CENTRE) AND CAROLINE GRANTON (RIGHT) AT THE FASHION SCHOOL



MARY QUANT IN 1966 COURTESY OF THE DUTCH NATIONAL ARCHIVES

Never threaded a needle? No problem. Caroline assures me that beginners are just as welcome as experts. “In fact, sometimes beginners can be easier to work with,” she says.

The experience of trying something new can be a powerful equaliser, and Caroline has seen many unlikely friendships begin over the buzz of the sewing machine.

“When our children are sewing, they’re all the same,” she says. “That’s what’s so great and so unique about what we do here – it’s easy for us to bring kids together from all over the neighbourhood, and from every walk of life. It’s great watching them exchange their life stories with each other.”

It’s in this spirit that the Fashion School has recently launched Sewing Family – a new charity offering a space to sew and training for those who need it.

Struggling teenagers, refugees, asylum seekers and those from disadvantaged backgrounds can come together to learn a new skill, and to benefit from Caroline’s insider knowledge of the industry.

“We offer a space to sew, but also the opportunity for training,” Caroline says. “What I hear from my connections is that designers need really good sample sewers, and they’re so hard to find. So if we train our students in correlation with designers and what they’re looking for, that can be a path into the industry for them.”

The other social mission close to Caroline’s heart is sustainability. The Fashion School uses deadstock fabrics

that have been donated by British designers, including the likes of Liberty and Alexander McQueen. It’s a point of pride that no scrap of fabric, however small, goes to waste, “even if it would make our lives a lot easier at times”, says Caroline.

Central to this mission is the school’s newly founded quilting club, which is led by textile expert Jodie Glen-Martin.

“We’re trying to get a quilting club going,” Jodie says. “I’d like to get people of all ages to come together over coffee and cake, helping each other and passing on skills. There are so many great things about quilting: I recently made a quilt for my mum who’s got dementia, with fabric from her house, and she’s really responded to it.”

Jodie works with fabric squares as small as one inch by one inch, meaning that even the smallest offcuts from projects at the Fashion School can be given a beautiful new lease of life. It’s just one of the ways in which the school promotes a slow and sustainable approach, an antidote to an industry too often dominated by ever-changing trends and poor quality workmanship.

“Often, when children first come here, the idea of wearing something secondhand or from a charity shop is something they’ve never considered,” Caroline says. “We want to give them the skills to change that – to learn how any garment can be adapted and brought to life, and that not everything needs to be brand new.

“This is a vibrant, sometimes chaotic place. There are sequins everywhere at the weekends. But it’s also a community, and that’s so important to us. Everyone is welcome – that’s what makes it so special.”

thefashionschool-uk.com



VIVIENNE WESTWOOD IN 2009 COURTESY OF MATTIA PASSERI

Social



ROUND OF A-PAWS

POOCHES TOOK CENTRE STAGE AT CHELSEA DOG DAY
Chelsea recently celebrated its very first dog festival. Held in support of the Dogs Trust, Chelsea Dog Day saw more than 50 brands participating with in-store activities, menus, hydration stations and treats. Highlights included dog-friendly cinema screenings at the Picturehouse cinema, ice cream for pups at Ice Cream Union, paw massage from the Organic Pharmacy and floral dog collars from Moyses Stevens.





NIAMH GRAHAM -
YOUNG K&C



ALISON JACKSON, GLORIA - DALGARNO YOUTH CLUB,
HARRY - ECYC, AMMAL - FFLY, SULAIMAN - DALGARNO
YOUTH CLUB, OLLIE LOCKE - MADE IN CHELSEA, AND
THE RBKC MAYOR CLLR DAVID LINDSAY



PHOTO FINISH

CELEBRATING THE WINNERS OF THE COMMUNITY PHOTOGRAPHY COMPETITION

Saatchi Gallery hosted an exhibition of winning photographs from Alison Jackson's A Day in Your Life competition. Guests enjoyed a private view of work by the worthy winners, and select works are now on sale from Saatchi Art online.



FFLY AND LANCASTER YOUTH CLUBS PARTICIPANTS

NEW LEVELS OF GAMING IN KENSINGTON

For a gaming and dining experience without equal, look no further than Forty Five Kensington. Ideally situated in the prominent Royal Borough of London, it is an iconic venue that takes luxury, style and sophistication to new heights.

It is here that you will find one of the capital's finest restaurants in a setting that effortlessly combines the best in fine dining with a level of service that is second to none. Just sit back, relax and choose from the mouthwatering menu of dishes from

around the world, while our highly trained team cater to your every wish.

No visit is complete without raising a glass in our welcoming bar. Equally as inviting is the thrill of our gaming floor. Whether you want to play at one of the many tables on offer or try the very latest electronic gaming machines, you will be spoilt for choice.

No matter if you're joining us for fine dining and the equally impressive entertainment, or to sample world-class gaming in a sumptuous and elegant setting, Forty Five Kensington leaves you wanting for nothing.

Open 2pm - 5am, 7 days a week

Restaurant open 7pm - 1am, Tuesday - Saturday

Forty Five Kensington,
45 Cromwell Rd, South Kensington, London SW7 2EF
+44 (0)20 7589 4041

www.fortyfivekensington.co.uk



BeGambleAware.org



SENSE



Problem
Gambling
Support

Over 18 only





Winter Crisis Appeal



This autumn, the cost of living crisis has left many of our neighbours struggling to put food on the table and keep their homes warm. From elderly residents to families with young children, the Kensington + Chelsea Foundation wants to help those who are facing impossible decisions over the coming months – forced to choose between heating and eating. This dilemma causes incredible stress and anxiety and often leads people to take on unmanageable debt such as payday loans, which only make their financial problems worse.

The Foundation wants to ensure that everyone in our community can afford to put food on their tables and keep themselves and their families warm, through its Winter Crisis Appeal.

By donating to the appeal, you will be helping a neighbour in need to pay a fuel bill or access emergency cash to buy essential items.

They will also be offered specialist advice from the Foundation's local partners, to ensure they have the right support in place to help them manage their future bills.

The typical size of an unexpected bill that can plunge a family into debt is as little as £30.

Your support could help neighbours like Nora, who said:

"I would like to thank you for your generous help... it has made a huge difference to me and my family. I feel less stressed and I'm able to move on without worrying about the debt... your generous donation and support meant so much to me and my family."

Please help us to reach our neighbours in need and ensure that nobody in Kensington and Chelsea has to choose between food and fuel. If you don't need your £400 government fuel subsidy, please donate it, or whatever you can, today.

Kensington
+ Chelsea
Foundation

A better life together

Please scan the QR code to donate
or visit the following link: [https://
thekandcfoundation.enthuse.com/
cf/winter-crisis-appeal](https://thekandcfoundation.enthuse.com/cf/winter-crisis-appeal)



Registered charity number 1125940



DRAYCOTT

NURSING & CARE



Bespoke nursing & care in the comfort of your own home

From one hour visits to live-in care

Our nurse-led care enables clients to remain in their own home whilst being cared for by professional and highly trained Carers and Registered Nurses.

Call +44 (0)20 7351 7171
or visit [draycottnursing.co.uk](https://www.draycottnursing.co.uk)

People / Local heroes



**BANISH
YOUR INNER
SCROOGE AND
SUPPORT THESE
HEROIC LOCAL
CHARITIES DOING
EXCEPTIONAL
THINGS FOR THOSE
MOST IN NEED THIS
CHRISTMAS**



GLASS DOOR

Following the fantastic news that Glass Door will be reopening its winter night shelters for the first time since the pandemic forced them to close in 2020, the homeless charity's Christmas campaign is focusing on the importance of shelter and security in helping its guests find routes out of homelessness. It will be sharing the story of Ruby, who received support from the team while in Glass Door emergency accommodation. While under their care Ruby was supported to secure her EU settled status and has been able to move into secure housing.

Women experiencing homelessness are incredibly vulnerable when sleeping on the streets and often are not found by council outreach teams, so through providing emergency shelter for women like Ruby, Glass Door is able to provide them with safety, protection and access to the vital support they need to end their experience of homelessness. The charity is expecting hundreds of people like Ruby looking for a way off the streets this Christmas. Please donate at [glassdoor.org.uk](https://www.glassdoor.org.uk)

CW+

As the official charity of Chelsea and Westminster Hospital NHS Foundation Trust, CW+ is committed to enhancing its facilities to create an outstanding healing environment for patients and staff, investing





A time *of giving*

in innovation to deliver exceptional patient care and delivering its art and design programme to transform patients' wellbeing.

Meanwhile, CW Innovation, led jointly by CW+ and Chelsea and Westminster Hospital NHS Foundation Trust, identifies and delivers high-impact innovation initiatives to address healthcare challenges in real-time.

The charity has also partnered with other organisations to facilitate the NHS Best For You programme. The partners are working with local community, digital and voluntary sector organisations to establish a new model of mental healthcare for young people and their families. For more information on the work of CW+, visit cwplus.org.uk. For Best For You, visit bestforyou.org.uk

THE KENSINGTON + CHELSEA FOUNDATION

Set up in 2008 by local resident Jeremy Raphaely, the Kensington + Chelsea Foundation works to enhance the lives of local residents by raising awareness of social issues including poverty, inequality, unemployment, loneliness and other mental health challenges. Through a combination of data-driven research and partnering with local businesses and philanthropists, it aims to help raise and direct funding to initiatives likely to have the greatest impact on the local community and make lasting change.

Most recently it has been working to understand the radical impact of Covid-19 on the lives of local residents, along with the energy and cost of living crises. The charity's unwavering commitment to bringing about positive and meaningful local change has seen it support 165 projects this year alone and benefit 28,907 people. To find out more visit thekandcfoundation.com or donate to the Winter Crisis Appeal via thekandcfoundation.enthuse.com/cf/winter-crisis-appeal

OTHER CHARITIES TO SUPPORT:

MIND - KENSINGTON AND CHELSEA

Mind promotes a more informed and sympathetic understanding of mental health problems by helping to connect people with local mental health services. Through the Kensington, Chelsea and Westminster Mind Partnership the charity has forged a vital relationship with other branches to help improve the lives of people experiencing mental health difficulties.

THE KENSINGTON AND CHELSEA VOLUNTEER CENTRE

By pooling a team of local volunteers the centre is making a vital impact on the community in myriad ways. One example is its Supported Access programme, which helps residents aged 16-25 suffering with disabilities, learning difficulties or long-term mental health conditions to gain employment through one-to-one sessions and creative workshops and activities.

Beauty / News



HEAD TO COSMETICS À LA CARTE to create your perfect personalised lip colour, or to recreate a discontinued favourite. The free bespoke lip blending session is led by an expert makeup artist, who will mix a range of samples in different shades and textures. Innovative lighting modules will allow you to test out each colour in a variety of different lights, before naming your creation and sending your unique recipe to the lab. Your brand new shade will be dispatched within 48 hours.
192 Pavilion Road



THE ORGANIC PHARMACY has released a collection of festive gift sets with limited edition candy swirl packaging. Each set addresses a different skin need, whether that's a moisture boost for dry skin or overnight repair for fine lines and wrinkles. The products are designed to be simple and effective, made in London with natural ingredients.
43 Cadogan Gardens



NEOM ORGANICS has teamed up with the Mental Health Foundation to create a limited edition candle, with £5 from the purchase price going to the charity. Inspired by the importance of sleep in preserving mental health, the candle is scented with calming notes of lavender, sweet basil and jasmine.
Available from Peter Jones, Sloane Square



PARTY READY

Prepping for your Christmas party? Here are five Chelsea destinations for festive pampering...

Sarah Chapman Skinesis Clinic. The 90-minute bespoke luxury facial will leave your skin glowing and rejuvenated.
259 Pavilion Road

Charlotte Tilbury. An in-house makeup artist will spend an hour giving you a gorgeous makeover using Charlotte Tilbury products.
Peter Jones, Sloane Square

Neville Hair and Beauty. The Lumenis Nuera radio frequency treatment tightens skin, reduces body circumference and smooths the appearance of cellulite.
5 Pont Street

Eighty-8 Nail Studio. The classic manicure and pedicure come with nail grooming, cuticle work and a foot massage for good measure.
23 Cale Street

Duck & Dry. Opt for a bouncy blow dry, a sophisticated updo or a fishtail braid, delivered while you enjoy a glass of champagne.
335-337 King's Road

FRENCH BEAUTY BRAND

Oh My Cream has opened its first UK store on the King's Road. The shop, which has 22 boutiques in France, specialises in clean, sustainable beauty. Browse a curated selection of products sourced from eco-friendly brands, and receive tailored advice on your skincare routine.

194 King's Road



10



of the best

Count down to Christmas with the very best beauty advent calendars.

By Alice Cairns

SPACE NK

This sell-out calendar in fiery pink and red includes handpicked items from brands like La Mer and Olaplex. £215, 27 Duke of York Square



DIPTYQUE

With packaging inspired by a starry sky, this calendar is filled with mini candles, fragrances, perfumes and body care items.

£370,
161 Sloane
Street



ASTRID & MIYU

Discover 23 pieces of jewellery in your choice of silver or gold, including personalised pieces based on your zodiac sign and birthstone. A £100 gift voucher is also hidden inside.

£590, 192 King's Road



Top 10 / Advent calendars

THE WHITE COMPANY

Open up the doors to find bath and body products in signature festive scents, as well as two full-size candles.

£175, 4 Symons Street



DIOR

In stunning midnight blue and gold packaging by artist Pietro Ruffo, this calendar contains 24 fragrance, makeup and skincare surprises.

£470, 31 Sloane Street



CHARLOTTE TILBURY

This 12-drawer calendar with jewelled handles contains full-size and mini products, including setting spray, moisturiser and lip oil.

£150, Peter Jones, Sloane Square



PETER JONES

Crammed with skincare and makeup from brands like Sunday Riley and Hourglass, 10 calendars come with a surprise £500 John Lewis gift card.

£179, Sloane Square



JO MALONE

This coveted calendar is designed to resemble a classic jewellery box, and contains colognes, body creams, candles and festive decorations.

£350, 150 Sloane Street

HARVEY NICHOLS

Enjoy makeup, skincare and perfume picks from brands like MZ Skin and Fenty. One in every 10 calendars contains a £50 gift card.

£250, 109-125 Knightsbridge



SAINT LAURENT

This chic black and gold calendar contains makeup and skincare products, including four full-size items.

£220, 171-172 Sloane Street



PAVILION ROAD WELLNESS HUB KXU IS CELEBRATING FIVE YEARS IN CHELSEA. WITH STATE-OF-THE-ART TRAINING FACILITIES, A MEDI-SPA AND A NUTRITION BAR SERVING HEALTHY POST-WORKOUT MEALS, IT'S DEDICATED TO EVERY ASPECT OF HEALTH AND FITNESS. GENERAL MANAGER JONNY RAMSAY TELLS US MORE

In the best of *HEALTH*

Tell us about KXU?

I've been here since we first opened in September 2017. Our ethos is training, treatment and nutrition with a pay-as-you-go concept, so there are no membership fees.

What makes it special?

This place is a community. One of the best things about KXU is the people: both those who work here and those who come to see us. It can be quite intimidating visiting any gym, and I always say that when you walk through the door for the first time, it can feel like walking into the Big Brother house! But soon people realise that we are incredibly friendly and welcoming, and that's what keeps them coming back.

Why is Pavilion Road the perfect location?

Our location is one of our biggest assets. We've seen how Pavilion Road has developed across the five years that we've been here, becoming this bustling hub with a real village feel. It's the perfect place for a welcoming wellness space. KXU isn't just somewhere you come to work out: you can spend time here chatting, having a smoothie, relaxing, whatever you need. We're building a community, and Pavilion Road is instrumental to that.

What class should I try?

By popular demand we've recently launched a glutes and core class, which is a modern-day legs, bums and tums! That's something our clients have been requesting for ages, and it should be lots of fun.

241 Pavilion Road



JONNY RAMSAY

What's new at KXU?

The Road to Recovery package is a collection of medi-spa treatments designed to heal and strengthen your body. For £395 you'll receive five cryotherapy sessions, five group classes, lymphatic drainage, a back and shoulder massage and your choice of an osteo, physio or fascial stretch therapy session.



Mortgages with a **personal service**

At Handelsbanken, we provide a personal mortgage service, with a dedicated account manager and the power to make clear and timely decisions within the branch. We take the time to understand your needs, to help find a solution that is right for you, whether buying, building or extending your home.

Chelsea Branch

handelsbanken.co.uk/chelsea

Kensington Branch

handelsbanken.co.uk/kensington

Mayfair Branch

handelsbanken.co.uk/mayfair

London Marylebone Branch

handelsbanken.co.uk/marylebone

London West End Branch

handelsbanken.co.uk/londonwestend

Our lending facilities are only available to UK residents aged 18 or over and are subject to status. Written quotations and Terms and Conditions are available on request.

Handelsbanken

Your home may be repossessed if you do not keep up repayments on your mortgage

Handelsbanken is the trading name of Handelsbanken plc, which is incorporated in England and Wales with company number 11305395. Registered office: 3 Thomas More Square, London, E1W 1WY, UK. Handelsbanken plc is authorised by the Prudential Regulation Authority and regulated by the Financial Conduct Authority and the Prudential Regulation Authority. Financial Services Register number 806852. Handelsbanken plc is a wholly-owned subsidiary of Svenska Handelsbanken AB (publ).

0893 | 10.2022

My Chelsea / Oliver Tomalin

FOUNDER OF THE ETHICAL BEACHWEAR LABEL LOVE BRAND & CO
OLIVER TOMALIN REVEALS HIS FAVOURITE LOCAL HAUNTS

HOW LONG HAVE YOU BEEN IN CHELSEA?

We set up the store almost 10 years ago, with the aim of selling trunks and donating part of the profits to help wild elephants and other endangered wildlife and rural communities. The store is having its 10th anniversary next spring and it's still amazing how many people discover it for the first time. It's a tropical oasis 365 days of the year.



FAVOURITE PLACE TO EAT?

I love going to Colbert in Sloane Square and often go there for meetings. There's a fantastic pan-Asian restaurant called Huo next to us on Park Walk. That's dangerous for me because it's so tempting to go there for lunch. My wife is an absolute diehard fan of Caraffini. She even had a tab set up by her mother there so that she wouldn't go hungry. I'm also a fan of classic restaurants so I like Daphne's.

AND TO DRINK?

On the pub front, the Fox and Pheasant is lovely. Near us on Park Walk is the Sporting Page where I've been charting the course of my life. Lots of random events and celebrations have happened there. It's a local pub that I spend time in with a great selection of beers.

FAVOURITE THING ABOUT CHELSEA?

There's a real mix of shops, restaurants and cafes to choose from.

The flower show is the time of year when the borough really comes alive for me. The Chelsea Physic Garden is also a remarkable place. Chelsea has such a rich history. I only recently discovered that Park Walk used to be called Lovers' Walk, but they changed the name. I wonder if we could get the council to rename it?

WHAT'S NEW AT LOVE BRAND & CO?

We've introduced our organic coffee concept: sustainably sourced fresh coffee from Colombia that we make in the store. We've also diversified our clothing range. Love Brand & Co was a standalone menswear store but over time we've introduced a concept called Love Brand Loves, where we recommend brands that we like that cater to women and children, meaning we can offer sustainably sourced swimwear and clothing for the whole family.

5 Park Walk



From left: Huo, Colbert, beachwear by Love Brand & Co



DAVID MELLOR

Sloane Square shop. Cutlery, Kitchenware & English Crafts



4 Sloane Square, Chelsea SW1W 8EE 020 7730 4259 davidmellordesign.co.uk
14 New Cavendish Street, Marylebone W1G 8UW 020 8050 4259



Neatsmith

BESPOKE FITTED WARDROBES, STUDIES & LIVING ROOM UNITS

BRENTWOOD | CHELSEA | HAMPSTEAD | HAMPTON HILL | HATCH END

WWW.NEATSMITH.CO.UK