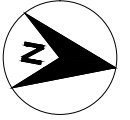
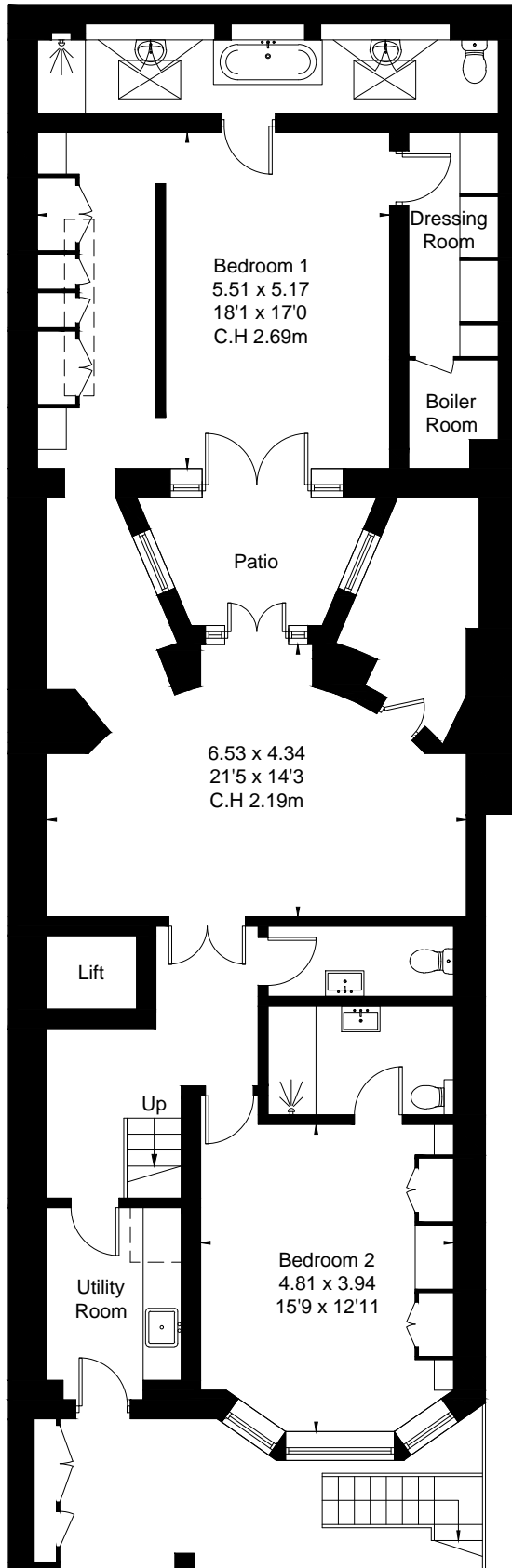


# SLOANE STREET, SW1X

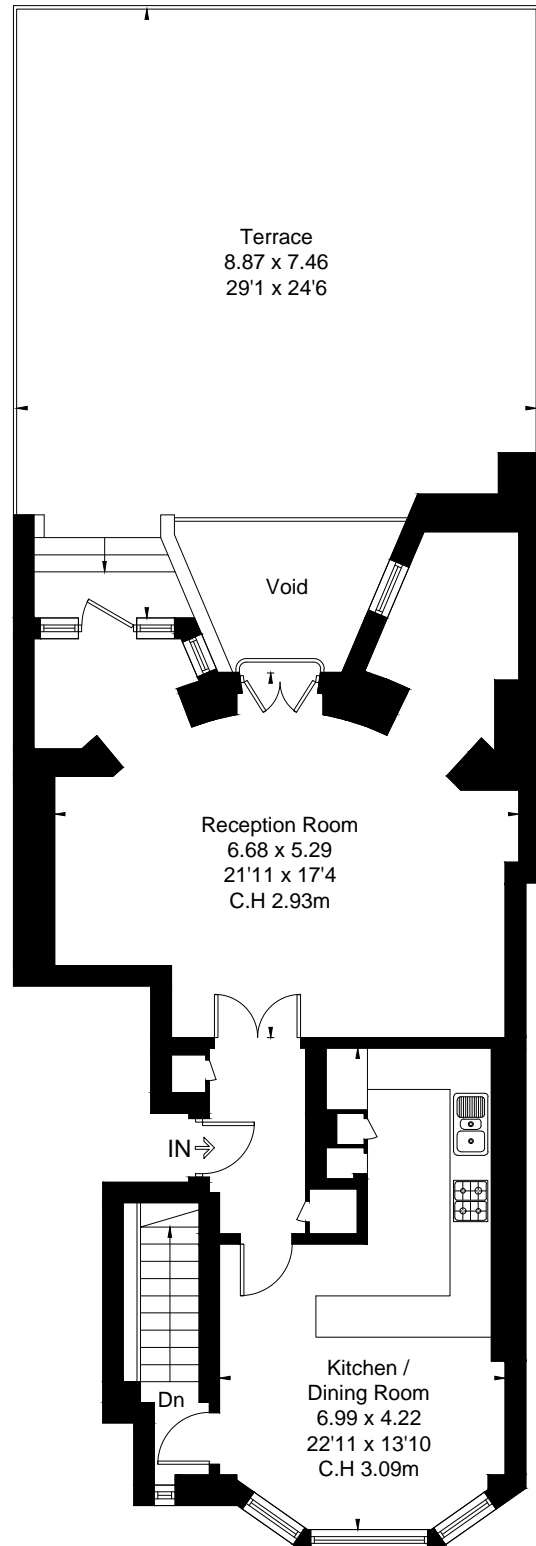
Approximate Floor Area = 204.0 sq m / 2195 sq ft (Excluding Patio and Lift)



[ ] = Reduced head height below 1.5m



Lower Ground Floor



Ground Floor



This floor plan has been drawn in accordance with RICS Property Measurement 2nd edition.  
All measurements, including the floor area, are approximate and for illustrative purposes only @djd.london #65446