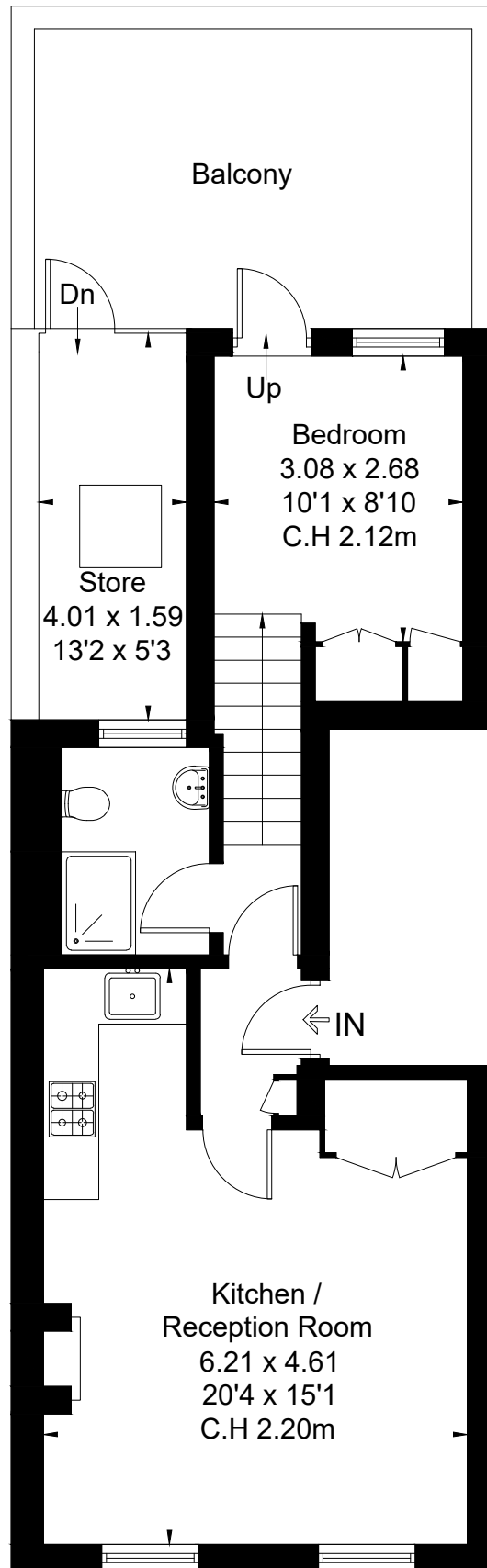


# LOWER SLOANE STREET, SW1W

Approximate Floor Area = 44.1 sq m / 475 sq ft  
(Excluding Store)



## Second Floor



This floor plan has been drawn in accordance with RICS Property Measurement 2nd edition.  
All measurements, including the floor area, are approximate and for illustrative purposes only @djd.london #xxxxx