

SLOANE SQUARE

ART \ CULTURE \ FASHION \ FOOD

MARCH / APRIL 2024

Easter feasts

LOCAL CHEFS SHARE
THEIR MEMORIES

Master of the air

IN CONVERSATION
WITH JON EWART

Wedding bells

TYING THE KNOT
IN CHELSEA

SHOOTING STARS

PRIZE-WINNING YOUNG
PHOTOGRAPHERS



Threads of India

Design inspiration from the V&A archives

V&A



SOFAS & STUFF

New showroom - 183b, King's Road, Chelsea

0203 150 2233 | www.sofasandstuff.com/toi



ORGANIC SHAPES

Embrace Outdoor Series

EOOS

Retail prices incl. VAT.

CARLHANSEN.COM



The E022 Embrace Outdoor Dining Table is available in three sizes to adapt to a variety of spaces, meticulously crafted in FSC™-certified untreated teak to allow for its unique patina to develop in its environment. Price: from £1,051

Created for supreme comfort outdoors, the E008 Embrace Outdoor Dining Chair is also crafted from untreated teak that develops a unique patina over time. Designed to be used with or without its signature weather-resistant cushioned upholstery, the chair can also be stacked for convenience. Price: from £591 | Cushion: from £131



BY APPOINTMENT TO
THE ROYAL DANISH COURT

Flagship Store London
48A Pimlico Road, Belgravia
London, SW1W 8LP
london@carlhansen.com

Monday - Friday: 10 am - 6 pm
Saturday: 10 am - 5 pm
+44 0 (20) 7730 8454

CARL HANSEN & SØN

Contents / March-April 2024



34



8 **CALENDAR**
Spring delights for
your diary

16 **NEWS**
All the latest happenings in
Chelsea

22 **ART NEWS**
Immerse yourself in creativity
and culture

26 **ART**
Shining a spotlight on
the photography stars of
tomorrow

28 **TV**
Actor Jon Ewart
on his remarkable
rise

30 **CULTURAL
ARTEFACT**
Reggae icon
Bob Marley's
Chelsea
connections

32 **INTERNATIONAL
WOMEN'S DAY**
Chelsea's female pioneers

34 **FASHION NEWS**
Find out what's in store this
spring

40 **FASHION**
The Brazilian brand spreading
joy in SW1

42 **FASHION**
Enjoy the great outdoors with
Klättermusen

45 **TRENDING**
Stylish skiwear to stand out on
the slopes

51 **WEDDINGS**
The best places to tie the
knot in Chelsea



COVER
Photograph by Sky,
aged 14, from Earl's
Court Youth Centre
Page 26

Contents

56 GIFT GUIDE

You don't need Mother's Day to treat your mum to something special

60 FOOD NEWS

Where to wine and dine this spring

66 EASTER MEMORIES

Local chefs on what they like to serve up over the long weekend

80



45



61

68 LOCAL HERO

Norman Waidhofer marks 50 years at Andrews Pharmacy

70 INTERIORS

Create a heavenly home with the interior design service at Peter Jones

72 CHARITY

The local foundation helping residents into work

74 TOP TEN

The best sustainable buys

78 BEAUTY NEWS

Brilliant beauty buys from Chelsea's boutiques

82 MY CHELSEA

Gyles Brandreth shares his local memories

SLOANE SQUARE

is produced for Cadogan by

Publishing Business

Berkeley Square House
Berkeley Square
London W1J 6BD
020 7259 1053

Cadogan

10 Duke of York Square
London SW3 4LY
cadogan.co.uk

Editor

Alice Cairns
020 7259 1058
alice@pubbiz.com

Deputy editors

Will Moffitt
Charlotte Pasha

Subeditor

Kate White

Designer

Katie Stafford

Advertisements

Bridget Rodricks
020 7259 1059
bridget@pubbiz.com

Richard Taylor
020 7259 1051
richard@pubbiz.com

Publisher

Adrian Day
020 7259 1053
adrian@pubbiz.com



This product is made of material from well-managed FSC®-certified forests and from recycled materials.

All inks vegetable based. Our printers are certified to ISO 14001 Environmental Management.

This magazine is fully recyclable, when you have finished reading it please put it in your paper recycling bin.



Publishing Business is a member of the Professional Publishers Association and observes the PPA Code of Publishing Practice.



@SloaneSquareMag
@DOYSQ
@SloaneStreetSW1
@Pavilion_road



@SloaneStreetSW1
@PavilionRoad
@dukeofyorksquare
@SloaneSquareMag
@Kingsroad.london

 Neatsmith



Highland X Green Glass

WWW.NEATSMITH.CO.UK

Calendar

MARCH 21

THE MOTIVE AND THE CUE

The National Theatre live series continues at Everyman with *The Motive and the Cue*, starring Johnny Flynn as Richard Burton, Mark Gatiss as John Gielgud and Tuppence Middleton as Elizabeth Taylor. Enjoy the show from a cosy armchair, with snacks and cocktails delivered to your seat.

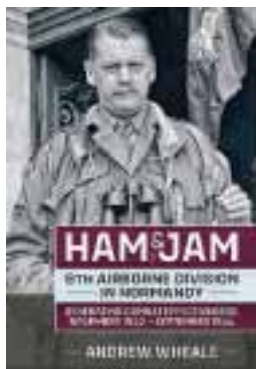
Everyman, 279 King's Road

IMAGE: MARK DOUJET



Events

MARCH & APRIL *diary*



MARCH 27

HAM & JAM: MEMBERS' TALK

Join an exclusive talk with military historian Dr Andrew Wheale, who'll be discussing his sixth book *Ham & Jam*. He'll explain how the 6th Airborne Division influenced the success of the Normandy invasion, and led to the development of the elite airborne soldier.

**National Army Museum,
Royal Hospital Road**

MARCH 24

MARK BEBBINGTON

Master pianist Mark Bebbington returns to Cadogan Hall for *Quintessential Quartets*, a concert of underperformed British chamber works from the early 20th century. Bebbington will be accompanied by string principals from the Royal Philharmonic Orchestra, and the programme will include works by Elgar, Vaughan Williams and John Ireland, a composer who lived locally at 14 Gunter Grove.

Cadogan Hall, 5 Sloane Terrace





CLOSES MAY 6

**BURTYNSKY: EXTRACTION/
ABSTRACTION**

Saatchi Gallery has opened the largest exhibition ever assembled on the work of Canadian photographer and artist Edward Burtynsky. Described by the Financial Times as revealing the "awesome beauty of a ravaged planet", expect sprawling depictions of industrialisation and its impact on nature and human existence. Encompassing the first- and second-floor galleries, his images are breathtaking, haunting and utterly unmissable.

Duke of York Square

IMAGE: EDWARD BURTYNSKY, COURTESY NICHOLAS METTWER GALLERY, TORONTO



IMAGE: ALEX BRENNER

APRIL 3-25

GUNTER

Don't miss the London transfer of this sold-out play about witch trials, suspicion and murder in an English village. Fresh from the Edinburgh festival fringe, where it received rave reviews and a number of awards, *Gunter* tells the story of a feud that fractures a community and leads to allegations of witchcraft.

Jerwood Theatre Upstairs, Royal Court, Sloane Square

APRIL 18

CULINARY HERBS AND THE MICROBIOME

This workshop at Chelsea Physic Garden will teach you how traditional culinary herbs can support your microbiome and boost your gut health. Led by the herbologist and chef Maya Jayaweera Thomas, you'll discuss the importance of the microbiome and learn recipes that will help you to incorporate more herbs into your diet.

Chelsea Physic Garden, 66 Royal Hospital Road



Calendar / Chelsea in Bloom



CHELSEA BLOOMS AGAIN WITH FLORAL FEASTS!

THE THEME FOR CHELSEA IN BLOOM 2024 HAS BEEN ANNOUNCED...

It's nearly time for one of the most exciting events in the Chelsea Calendar – Chelsea in Bloom, London's largest free flower festival returns from 20-26 May, bringing the streets to life with enormous floral creations inspired by this year's theme, Floral Feasts.

Expect to see shops, hotels and restaurants across the neighbourhood adorn their frontages with floral foodie dreamscapes as they compete for the coveted awards.

Visitors can vote for their favourite, the 'People's Champion' via the website, also home to all the foodie fun to enjoy that week including a downloadable map, complimentary rickshaw rides and walking tours, and details of

exclusive menus and products. This year's event will support The Felix Project, the charity fighting hunger and food waste across London as well as the Confetti Club, raising vital funds to support cancer charities.

Chelsea in Bloom is created by Cadogan in collaboration with the Royal Horticultural Society.

Chelseainbloom.co.uk



The logo for Chelsea Physic Garden, featuring the name in a white serif font inside a white circular border on a dark green background.

Chelsea
Physic
Garden

FOUNDED
1673

A red circular badge with the text 'FREE entry' in white, sans-serif font.

FREE
entry

Plant Festival

Saturday 27 April

A close-up photograph of two hands holding a small green seedling in a biodegradable pot. The background is blurred, showing people in aprons and food stalls.

**Plant market | Food stalls |
Gardening demos**

Find out more:

chelseaphysicgarden.co.uk/plant-festival

Calendar

APRIL 19

ASTRONIGHTS AT THE SCIENCE MUSEUM

Children can enjoy the sleepover of a lifetime at the Science Museum, inspired by the Turn It Up: The Power of Music exhibition. They'll take part in fun workshops, shows and activities with a musical theme, before settling into their sleeping bags and waking up to a tasty breakfast. VIP tickets are also available, and include an air bed, special breakfast options and a dedicated usher team to answer your questions.

The Science Museum, Exhibition Road



IMAGE: SCIENCE MUSEUM GROUP



IMAGE: RICHARD HEALD

FROM APRIL 25

DESIGN VENTURA

Design Ventura is a competition that sees schoolchildren aged between 13 and 16 from across the UK submit product ideas to be manufactured and sold in the Design Museum shop. Shortlisted and winning entries will be displayed in an exhibition at the Design Museum – previous ingenious items on display have included a flower seed cannon, a plant pot that expands as the plant grows, a hook to attach a water bottle to your bag and a set of dice to combat writer's block.

**Design Museum,
224-238 Kensington High Street**

UNTIL AUGUST 25

LUCIAN FREUD'S ETCHINGS

Explore a unique collection of Lucian Freud's etchings, many of which have never been exhibited before. Though Freud is best known as a painter, he also experimented with etching throughout his career. This exhibition includes etched self-portraits, landscapes and more, telling the story of Freud's long and fruitful collaboration with the master printer Marc Balakjian.

V&A, Cromwell Road





Easter events

LOOKING FOR FUN FAMILY EVENTS FOR THE EASTER HOLIDAYS? LOOK NO FURTHER!

MARCH 23

EASTER EGG MARKET

From 11am-4pm, foodies can explore a special Easter edition of the Fine Food Market in Duke of York Square. There will be plenty of family-friendly fun, including a visit from the Easter bunny himself!
Duke of York Square

MARCH 29 - APRIL 1

EASTER BRUNCH

The Carlton Tower Jumeirah is launching an Easter brunch, available between 11am and 4pm. The menu includes a delicious red 'egg cake' constructed from almond sponge, rhubarb cream and crumble. The hotel is also selling hand crafted Easter eggs for £45, available in white, milk and dark.

1 Cadogan Place

APRIL 10

EASTER TRAIL

Take part in a self-led Easter trail in the Chelsea Physic Garden, exploring the 4-acre garden while learning more about our planet and how we can take better care of it. At the end of the trail, every participant will receive a chocolate treat from ethical craft chocolate brand Cocoa Runners.

66 Royal Hospital Road

The Little Egg Hunt 2024



@LONDONBLOCKBYBLOCK

MARCH 18 - APRIL 15
THE LITTLE EGG HUNT

Asian wildlife charity Elephant Family is collaborating with Clarence Court and Cadogan for the little egg hunt, an Easter extravaganza for all the family. For one month you'll be able to explore an open air exhibition of 12 enormous painted eggs located around Sloane Square. Each egg has been created by a leading figure from art, design, architecture and beyond, including Anya Hindmarch, Philip Colbert, Dan Baldwin and James McQueen.

Elephant Family is a charity dedicated to protect wildlife in Asia, restoring migratory routes, ending illegal trades and raising awareness about the plight of endangered species. The little egg hunt aims to promote conversations around conservation and to raise money for vital projects.

News / March

ANYA HINDMARCH IS KNOWN for her exciting themed pop up stores, including the recent 'Anya says walk' pop-up in collaboration with Ordnance Survey. This spring, the space is set to transform again. Keep your eyes peeled for Anya's mini-mart: the coolest mini supermarket on the block. 11 Pont Street



A CHELSEA INFLUENCER has been crowned Miss Tourism Queen of the Year International. Emily Cossey is a chemical engineering graduate who has worked as a volunteer all over the world, including in orphanages in Vietnam and Kenya. She said: "I am a passionate believer that children's education and cultural exchange is vital to saving our environment and creating peace." Emily is the first ever representative of the UK to win the prestigious title.

THE KING'S ROAD PARTNERSHIP has commissioned a new heritage trail of the King's Road, in collaboration with Cadogan. The route encompasses the long and colourful history of one of London's most iconic destinations, from its aristocratic origins as King Charles II's private road to its time as the epicentre of Swinging Sixties culture. You can download the map, titled Daydreaming on the King's Road, from kingsroad.co.uk





THE THEME OF KENSINGTON & CHELSEA Art Week 2024 will be “changing landscapes”. The seventh edition of the art trail through Chelsea and Kensington will take place in June, with artwork celebrating Chelsea’s unique historical heritage, as well as exploring themes including the digital landscape and natural habitats.
kcaw.co.uk

PLANNING AN INTERIORS REFRESH? Nothing says spring quite like Katharine Pooley’s collaboration with Fromental on a new wallpaper. An English Butterfly Garden is inspired by Katharine’s own garden and features many of her favourite flowers, including honeysuckle, camellia and forget-me-nots. Hand-painted, hand-embroidered and available in fawn and primrose colourways, part of the proceeds from the wallpaper will be donated to Butterfly Conservation, a British charity close to Katharine’s heart.
 160 Walton Street



THE ROYAL COURT HAS CREATED a digital archive with details on every play that has ever been presented on its stages. Since it opened in 1956, the Sloane Square theatre has hosted notable plays including the *Rocky Horror Show*, *The Entertainer* and *Our Country’s Good*. Vicky Featherstone, the venue’s artistic director, said: “Living Archive is a portal into the words, passions, beliefs and craft of the writers and theatre-makers who have brought their skill, care and curiosity to the Royal Court.”
 To access the archive, visit livingarchive.royalcourttheatre



LOOK BACK IN ANGER © ZOE DOMIN

News / March

RIXO HAS LAUNCHED A MONTHLY supper club dedicated to tasty food and great conversation. Each month, a guest chef will visit the King's Road store to serve up a three-course meal and curated drinks list. Just 15 tickets will be available for each dinner, so you'll need to move fast to secure your seat. Keep an eye on Rixo's website for details of the next supper club.
114-116 King's Road



BIOENGINEER DR JAZMIN AGUADO SIERRA has used a supercomputer to create a model of her own beating heart, now on display at the Science Museum. The model can be adjusted to simulate different heart conditions, allowing doctors to test treatments before they are used on patients.
Exhibition Road

DID YOU KNOW THAT SOME TREES can change sex, or that animals have been known to pair up in same-sex couples? Chelsea Physic Garden recently celebrated the links between queer history and the natural world with a programme of talks, activities and guided tours to coincide with LGBTQ+ history month. Events included a queer ecology nature tour and a rainbow soap-making session.
66 Royal Hospital Road



THE DECORATIVE FAIR

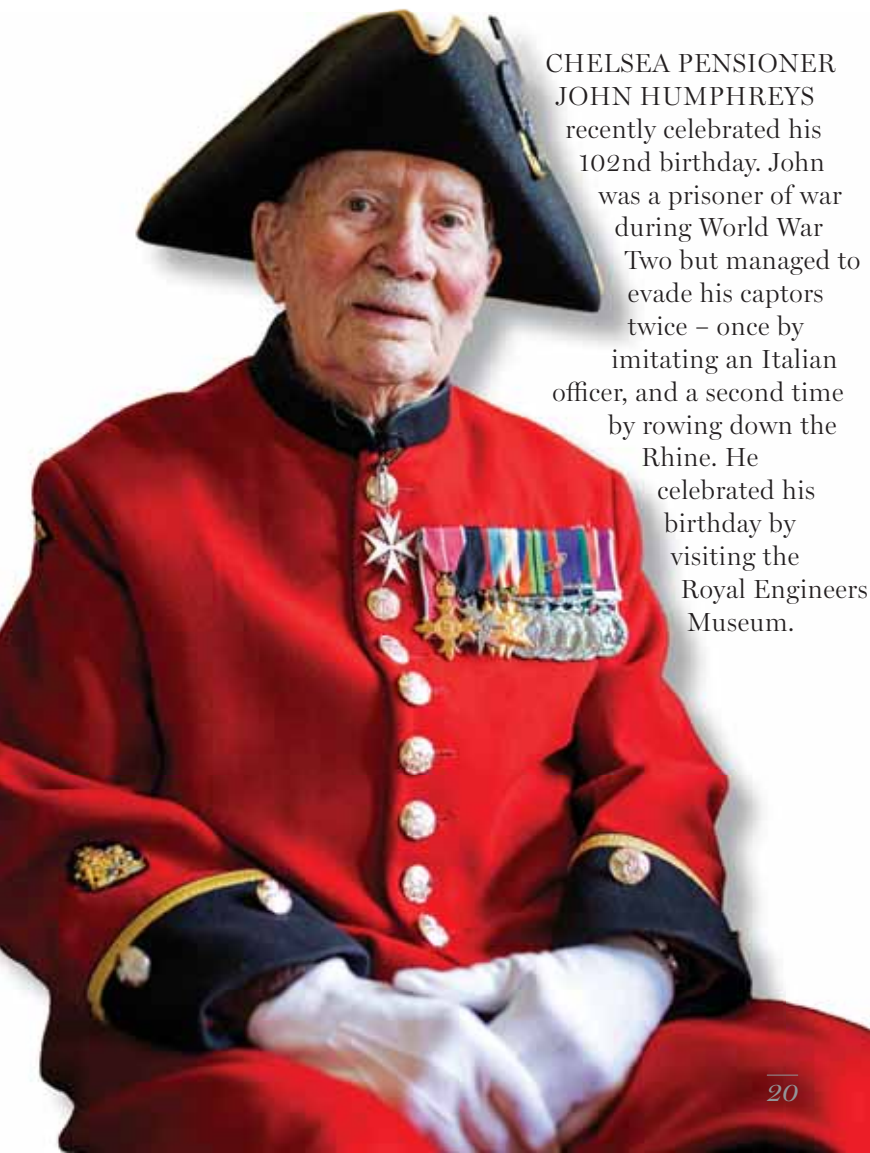
BATTERSEA PARK, LONDON
DECORATIVEFAIR.COM

SPRING
7-12 MAY 2024



Antiques, Design and Art for Interior Decoration
@decorativefair

THE BRITISH BESPOKE FURNITURE AND FABRIC company Sofas & Stuff has opened a new showroom on the King's Road. The new space will be home to its latest collection, Threads of India, launched in partnership with the V&A as a tribute to India's timeless and intricate textiles. Pop in for interiors heaven – think squishy sofas, beautiful fabrics and expert advice. 183b King's Road



CHELSEA PENSIONER JOHN HUMPHREYS recently celebrated his 102nd birthday. John was a prisoner of war during World War Two but managed to evade his captors twice – once by imitating an Italian officer, and a second time by rowing down the Rhine. He celebrated his birthday by visiting the Royal Engineers Museum.



CW+, THE OFFICIAL CHARITY for Chelsea and Westminster Hospital, has collaborated with the English National Ballet School to launch a new programme for HIV-positive patients. It gives patients access to exercise videos and in-person classes to aid mobility and strength, as well as providing a social outlet and sense of community.

AWAY HOLIDAYS



Holiday Bliss, Tailored for Families

At Away Holidays, our aim is simple: to offer high-quality travel at the best possible price. Covering a broad range of destinations worldwide, we offer superb-value packages, fabulous city breaks and opulent, all-inclusive escapes.

Browse our collection of tried-and-tested resorts that provide everything you'll need for a restorative family holiday: supervised clubs for kids and teens, plenty of informal dining options, and activities that the whole family will love. What's more, on many of our ATOL-protected family holiday, kids stay and eat for free.



AwayHolidays.co.uk
Or call us 24/7 on 0800 408 8043



Scan for offers

ILLUSTRATION FROM THE ARCHITECTURAL REVIEW, 1953
IMAGE: COURTESY RIBA COLLECTIONS © GORDON CULLEN ESTATE



CLOSES SEPTEMBER 22

Tropical Modernism: Architecture and Independence

Opening this month, a major exhibition at the V&A centres around and celebrates the founding practitioners of tropical modernism. The architectural style reconfigured a modernist aesthetic, which valued function over ornament, to the hot, humid conditions of west Africa and beyond. First developed by the British architects Jane Drew and Maxwell Fry in the late 1940s, tropical modernism transcended its early proponents to become an aspirational postcolonial symbol of internationalism and progressiveness, birthing alternative movements and distinctive buildings. *Cromwell Road*

MARCH 29 – SEPTEMBER 8

Enzo Mari

Curated by Hans Ulrich Obrist with Francesca Giacomelli, a major exhibition at the Design Museum will celebrate the life and work of the legendary Italian designer Enzo Mari, whose designs have inspired generations of creatives around the world. An artist, teacher and theorist, Mari created enduring and timeless designs and was an outspoken critic of the design industry, uncompromising in his belief that design has a social responsibility. Featuring hundreds of projects delivered during his remarkable 60-year career, this unmissable retrospective reveals Mari as a brilliant thinker whose philosophy resonates powerfully today, as we face ecological and ethical issues with ever greater urgency. *224-238 Kensington High Street*



5 THE NATURE SERIES, NO. 1 THE APPLE WITH ELIO MARI
IMAGE: DANESE MILANO



MARCH 23

Curator Tour: Art Through Time

Military history buffs and art lovers are invited to the National Army Museum to join curator Anna Lavelle on a guided gallery tour, which will showcase a range of works that depict the British army across the centuries. The history of the army in art is a long and fascinating one. Sketched and painted since its inception, the army has long been a creative muse, and the gallery's expansive collection encompasses rousing depictions of historic battles, striking portraits of officers and still-life representations of everyday experiences. Tickets cost £5 and are free for members. *Royal Hospital Road*

Polar prize winner

A breathtaking image of a polar bear asleep on a bed of ice has won the People's Choice Award at the Natural History Museum's Wildlife Photographer of the Year competition. The photo was taken by Nima Sarikhani, a photographer from the UK, off Norway's Svalbard archipelago. Nima said: "While climate change is the biggest challenge we face, I hope that this photograph also inspires hope; there is still time to fix the mess we have caused."

Cromwell Road

IMAGE: NIMA SARIKHANI



MARCH 11-31

Rong Bao Is Me

Inviting sensory interactions between audiences and artwork, this exhibition at Saatchi Gallery showcases the playful gestures of the Chinese artist Rong Bao. Known for turning familiar objects into sculptures that poke fun at the absurdity of imposing order on society - prompting us to question our perception of the physical world - the ground floor in Gallery 4 plays host to Bao's enigmatic creations, inviting visitors to participate in a world that pushes the boundaries of everyday logic.

Duke of York Square



DHANBAD, ÉTAT DE BIHAR, INDE, 1989
IMAGE: SEBASTIÃO SALGADO

Workers: An Archaeology of the Industrial Age

Available to purchase at Taschen, the world-famous photographer Sebastião Salgado's *Workers: An Archaeology of the Industrial Age* pays tribute to the time-honoured tradition of manual labour during a period when machines and computers have replaced human graft. Featuring 350 duotone images of activities that have defined hard work, from the Stone Age to the present, images span the infernal landscape of an Indonesian sulphur mine, the drama of traditional Sicilian tuna fishing and the staggering endurance of Brazilian gold miners. Through his images, Salgado reveals the human activity at the core of modern civilisation.

12 Duke of York Square

CLOSES MARCH 28

Ramón Enrich: Imminència

Inspired by rationalist and African architecture, Catalan artist Ramón Enrich creates grid-like structures dotted with flat-roofed buildings, cones, cubes and never-ending staircases that transform the barren urban landscapes he depicts. His latest exhibition at Cadogan Gallery reveals his trademark use of geometric design, space and colour as his paintings, devoid of human beings, create a surreal, spellbinding atmosphere, blurring the boundaries between architecture and landscape.

87 Old Brompton Road



CLOSES MARCH 23

London, My Home

Tushar Sabale, an Indian-born British artist, has won national and international awards for his plein air paintings that capture London in all its colour and energy, not least the prestigious Cadogan Award at the Chelsea Art Society. His forthcoming exhibition, London, My Home, at the Green & Stone gallery, sees Sabale unveil a series of paintings that define London to him. These evocative, deeply personal works are a collection of memories, places, emotions and expressions, emoted on canvas from his everyday experiences in a place that he proudly calls home.

251-253 Fulham Road

SPRING 2024

The Art of Interior Design

Box Galleries celebrates the art of interior design by showcasing brand new original artwork in Spring 2024 and launching an inaugural gallery showcase in the Chelsea Design Centre from May 2024. A committed champion of original art for over a decade the Chelsea gallery represents and works with a diverse portfolio of some of the UK's most talented and collectable artists, from figurative painters such as Mark Demstader and Patrick Palmer and abstract painters such as Paul Bennett. Visitors will be able to glimpse and purchase these original works and bespoke commissions by a core group of artists will also be available.

402 Kings Road





Chasemore
PROPERTY

2 Eaton Gate, Belgravia, London SW1W 9BJ
 ☎ 0788 770 3777
 www.chasemoreproperty.com
 enquiries@chasemoreproperty.com

Cranmer Court, Whiteheads Grove, SW3

A bright and immaculate brand newly refurbished flat, interior designed and built to a high specification set in the prestigious Cranmer Court in the heart of Chelsea SW3. Large Bedroom, state of the art bathroom, eat in kitchen and a superb reception room.

Newly refurbished to high standard • 24 hour concierge • Share of freehold.

Price in excess of £1,200,000

B·A·C·A·A
 BAY AREA CLASSICAL ARTIST ATELIER

BACAA INTERNATIONAL MASTER WORKSHOPS 2024

Learn in the company of master artists as Bay Area Classical Artist Atelier (BACAA) announces workshops for this year.

BACAA/Carlo Russo
 Master Dutch Flower
 Painting Workshop

Chelsea/London,
 UK July 4-July 10, 2024



BACAA/Kamille Corry
 Master Figure
 Painting Workshop

Chelsea/London,
 July 18-July 24, 2024



BAY AREA CLASSICAL ARTIST ATELIER LLC
 info@BACAA.org • (650) 832-1544
 www.BACAA.org



13-24 YEARS WINNER: RICCO AGED 13, EARL'S COURT YOUTH CENTRE. MODEL: FAITH, 15

A COMMUNITY PHOTOGRAPHY CONTEST SHONE A
SPOTLIGHT ON THE STARS OF THE FUTURE
WORDS: ALICE CAIRNS

Calling *the shots*

Art / Photography



FAR LEFT: ALISON JACKSON WITH SOME OF THE WINNERS.
LEFT: SKY, AGED 14, WITH HER WINNING PHOTO

YOUNG PEOPLE FROM ALL OVER CHELSEA AND KENSINGTON recently took part in a prestigious photography competition led by the award-winning artist Alison Jackson. Their work was exhibited at Cadogan Hall, a testament to the skill and creativity of the next generation of Chelsea artists.

The competition, titled *A Day in Your Life*, was open to photographers between the ages of five and 24 in the borough. Created by Bafta-winning artist Alison Jackson, sponsored by Cadogan and judged by industry experts including star photographer, Richard Young, it aimed to foster creativity in underrepresented and disadvantaged young people. Alison and her team visited youth clubs, schools, trusts and community centres across the borough, delivering masterclasses in all aspects of photography, from modelling to lighting.

The winners of the competition were



celebrated at a prize-giving ceremony at Cadogan Hall, attended by the likes of Princess Katarina of Yugoslavia and the mayor, Preeti Hudd. As well as receiving cameras as prizes, many were awarded invaluable placements and mentorships with institutions including the Science Museum, the V&A, University of the Arts and the Houses of Parliament.

Jackson said: "Everyone should have a chance to shine. The reason I started this photography competition was for everyone to have the same fantastic opportunities I have had within the Royal Borough of Kensington and Chelsea, specifically the outstanding education available that can lead to so much more, so I have made the prizes primarily educational and vocational.

"There are many extremely talented people out there and I want to give a chance to those who haven't had one before. I want to discover new talent and aspiring photographers with fresh ways of seeing."

MIDDLE TOP: FASHION PRIZE SECOND PLACE: PHOTOGRAPHER ANNA AGED 11. EARL'S COURT YOUTH CENTRE. MODEL: RIKUTO AGED 9
MIDDLE BOTTOM: MODEL PRIZE SECOND PLACE: DANNAH AGED 17. EARL'S COURT YOUTH CENTRE. PHOTOGRAPHER: JRSULA AGED 14

CHELSEA ACTOR JON EWART FIRST APPEARED ON OUR SCREENS AS BLAKE IN EASTENDERS, BUT APPLE TV'S WORLD WAR TWO MINI-SERIES, MASTERS OF THE AIR, IS HIS FIRST BIG BREAK. HE TELLS US ABOUT HIS JOURNEY TO BECOMING AN ACTOR, HIS FAVOURITE CHELSEA HAUNTS AND HANGING OUT WITH HOLLYWOOD ACTORS ON AND OFF SET

AS TOLD TO: SOPHIA CHARALAMBOUS

One to watch



Jon, how did you get into acting?

I've always loved telling stories. To tell the truth, it all started because I was a bit of a naughty boy in school. Boxing and drama club were the places I always felt I could be free to express myself without getting in trouble. I have ADHD, so being able to let loose and be creative was a must for me. I was planning to go to Guildhall to study full-time to get an acting degree. However, at college, an agent randomly came in one day to scout talent. I turned up late, disorganised and unaware that there was a talent agent in our classroom, which I believe was a blessing because I didn't have a chance to get nervous. I performed for her and managed to secure a meeting for representation. My breakthrough role was the part of Tiffany Butcher's boyfriend Blake on the BBC's *EastEnders*.

Masters of the Air is a war TV series – are you into war dramas?

I have never really been into war dramas. When my agent came to me with the audition to play Lt William Couch in *Masters of the Air*, she was astonished that I had never seen the *Band of Brothers* series. I watched it straight away and became obsessed. I researched heavily for this audition. It had a weighted pressure because we were all portraying real people who fought and died for their country in the war. I really wanted to make sure I understood what it took to be a young man in these unimaginable circumstances and the expectations that came with it. It was interesting and saddening how different the understanding and expectations of mental health were back then for these young lads. When I secured the role I actually spoke to my character's family, which was very humbling. His son and grandson gave me all the information I needed on their father and grandfather, so I could tell his story to the best of my ability.

The show has a great cast with big names. Austin Butler, what was he like?

Austin Butler was as amazing as you'd imagine: so

friendly and definitely one of the lads. I admired how much work he had to put into this role, especially because it was straight after he wrapped on *Elvis* and moved into such a contrasting production. However, when filming there really were no big names on set. We were all a family and understood that we were a part of something a lot bigger than ourselves. I learned so much from the amazing actors on set [Callum Turner, Barry Keoghan], there was so much

room to play the character because of the amazing directors [Cary Joji Fukunaga, Dee Rees] and there was an abundance of raw talent. The cast would all walk around the set very much in character as soon as our costumes were put on, and we worked very closely with dialect coaches and historians on set. When we wrapped, we would all go for drinks around Oxford and have a laugh. It really felt like a brotherhood throughout the eight months of filming. I have made friends for life from this job.



"IT REALLY FELT LIKE A BROTHERHOOD THROUGHOUT THE EIGHT MONTHS OF FILMING. I HAVE MADE FRIENDS FOR LIFE FROM THIS JOB"

How is it living in Chelsea?

I have lived in Chelsea for the past six years. All my friends live in Chelsea and I love that there is always something to do. I have a very big social battery that needs to be filled, so it is the perfect place for me. After a long week at work, nothing beats going for dinner at La Famiglia and then popping to Bluebird for drinks after – and maybe Raffles after that if I'm feeling up to it, which I usually do.

I love Ixchel, the most amazing new Mexican restaurant on King's Road

that has just opened up. I also love going for drinks at Bóha; it has a lovely speakeasy downstairs and whisky tasting.

If you were in charge of Chelsea for a day, what would you do?

I would love to see more outdoor festivals for locals around Chelsea to bring the community together. Also, can we please build a King's Road train station? I would also love a new drama school to pop up in Chelsea to help young adults get into the industry.

Culture / Bob Marley

When did Bob Marley come to Chelsea?

Bob Marley fled Jamaica for London as a political refugee, after an assassination attempt in his own home. In 1977 he moved to Chelsea, where he lived with the Wailers in a four-storey house at 42 Oakley Street – now bedecked with a blue plaque. While living in Chelsea, Marley was arrested for possession of cannabis and gave a fake address to the police – an episode that caused confusion for biographers and meant that it took longer to secure a blue plaque at Oakley Street.

Why was Chelsea so important to Marley's career?

During his time in Chelsea, Marley seems to have experienced a period of intense creativity and productivity. During his five months on Oakley Street he not only recorded the classic album *Exodus* – which included hits such as *Jamming*, *One Love* and *Three Little Birds* – but he also wrote many songs for his next album, *Kaya*.

... and his personal life?

It was while living in Chelsea that Marley's affair with Cindy Breakspere, a Canadian-Jamaican jazz singer who had been crowned Miss World in 1976, gained momentum. Together the pair would have a son, Damian Marley. It was also while living at Oakley Street that Marley was diagnosed with cancer of his right toe. He refused an amputation, citing his religious beliefs and his love of football, and would die four years later, aged 36, when the cancer spread.



Cultural artefact



Why Oakley Street?

Marley chose a central Chelsea location primarily because of its proximity to Battersea Park. A committed football fan, he rose late every morning and crossed Albert Bridge to play football with his friends, including the reggae star Eddy Grant. After a busy day on the field, they'd head for the studio to record *Exodus* and grab a drink at The Phene at 9 Phene Street. Another benefit of a Chelsea base was the area's links

to the punk scene. Marley was close friends with British punk rock band the Clash, and was interested in points of fusion between punk and reggae – as reflected in his 1977 single *Punky Reggae Party*.

What impact did *Exodus* have?

Exodus received universal critical acclaim, and *Jamming*, *Waiting in Vain* and *Three Little Birds* were major international hits. In 1999, *Time* magazine named *Exodus* as the best album of the 20th century.

Where should I listen to *Exodus*?

Put in your headphones and take a stroll up the King's Road towards Oakley Street, or walk to the Battersea Park football pitches to honour Marley's love of the beautiful game.



THE PERSONAL TOUCH: *Auriens' tailored approach to later living*

WHILE MOVING HOUSE CAN BE AN EXCITING OPPORTUNITY AND A GATEWAY TO A HOST OF NEW LIFE EXPERIENCES, IT CAN ALSO BE A DAUNTING PROCESS, PARTICULARLY WHEN MOVING LATER IN LIFE. WE SPOKE TO WILLIAM HARDING, THE NEW GENERAL MANAGER AT AURIENS CHELSEA, TO FIND OUT MORE ABOUT THEIR PIONEERING APPROACH AND THE IMPORTANT ROLE THE TEAM PLAYS IN ENSURING THE TRANSITION TO YOUR NEW HOME IS A SEAMLESS ONE.

“We understand that moving into a later-living community may generate a range of emotions, as it is a considerable change to the individual’s way of life. Numerous surveys continue to highlight people’s fears of loneliness and isolation at an older age, which is why Auriens has adopted a forward-thinking approach to the physical and mental wellbeing of its residents.

While all the physical amenities, including the gym, spa, cinema and restaurant are world-class and the location is second to none – with the vibrancy of the King’s Road on the front doorstep – what really helps to set Auriens apart is its people.

Providing community living for its residents is one of Auriens’ key cornerstones, as the forward-thinking approach helps provide the opportunity for people to build relationships with likeminded individuals, share experiences and create meaningful connections, all of which greatly enrich their quality of life.

Having gained considerable insight into the later living market since opening in 2021, Auriens continues to further enhance the number of social activities, clubs, and events tailored to residents’ interests. From concerts by classical musicians and parties with the families of Auriens’ team members to help create

intergenerational friendships, to workshops and lectures designed to keep residents mentally stimulated and engaged, Auriens aims to provide a vibrant and active social life and help reduce any feelings of isolation or loneliness.

Alongside the further enhancement of the peer-based social activities, what I believe stands out is Auriens’ team. Teamwork is essential to the ongoing success of Auriens, with every member consistently going above and beyond in order to cater to the residents’ needs. The team’s size, extensive service offering and shared commitment to

excellence ensures residents have all the support they need at their fingertips, should they require it.

Ultimately Auriens is the resident’s home, so by providing a sense of belonging, security, and a fulfilling lifestyle, we have seen those who live here who embrace the social connections, support, convenience, and opportunities for personal growth are able to truly thrive in a community that caters to their unique needs.”

If you would like to speak to the Resident Advisory team or arrange a time to visit Auriens, please contact 020 3840 3667 or email enquiries@auriens.com



Culture / International Women's day

COUNCILLOR PREETY HUDD was recently elected Mayor of Kensington & Chelsea. She's a passionate advocate for The Felix Project, a food distribution charity seeking to fight against poverty in London and this year's Chelsea in Bloom charity partner.



VERA ATKINS LIVED at Nell Gwynn House in Sloane Avenue, and worked as a Chelsea air raid warden. At the age of 25, she was recruited as a secret agent and sent to Nazi occupied France to gather information and strengthen local resistance. As a Jewish woman, the role came with considerable risk. She has been awarded a CBE, the Croix de Guerre and was made a Knight of the Legion of Honour.

AGATHA CHRISTIE LIVED at Swan Court until her death in 1978, and even set one of her Poirot novels (Third Girl) there. Christie enjoyed having lunch at the ground floor restaurant with her neighbour, the actress Sibyl Thorndike.



ANNE OF CLEVES, fourth wife of Henry VIII, died in Chelsea in 1540. As her health deteriorated she moved to Chelsea Old Manor, a royal residence on the site of what is now Swan Court. She was the last of Henry's ill-fated wives to die.





FORWARD
LAUREN
JAMES plays for
England and Chelsea
FC. She began
playing football as
soon as she could
walk, and by just
14 she'd begun
playing with
the Arsenal
women's senior
team. Today
she's won
countless
trophies
and awards
including the FA
cup, the WSL and
the PFA Women's Young
Player of the Year.



DESPITE CONTRIBUTING
VITAL research to the
discovery of the structure
of DNA, Rosalind Franklin
was nearly written out of
the story. Known as the
"wronged heroine" and the
"dark lady of DNA", She
lived at 107 Drayton
Gardens until her death.
Today, her contribution to
Watson and Crick's
discovery has been widely
acknowledged.

TWO LITERARY LEGENDS
WERE Chelsea neighbours in
1815. Mary Shelley stayed at 41
Hans Place after eloping with
Percy Bysshe Shelley at just 16.
Soon afterwards, the pair would
travel to Lake Geneva, where
Mary would write *Frankenstein*.
In the same year, Jane Austen
was staying at 23 Hans Place as
the guest of her brother, Henry.
Emma would be published in
the same year. Sadly, there's
no evidence that Shelley and
Austen spent time together.



AS WE CELEBRATE INTERNATIONAL WOMEN'S
DAY IN MARCH, WE SHARE SOME FUN FACTS
ABOUT CHELSEA'S PIONEERING WOMEN

WORDS: ALICE CAIRNS

DID YOU *KNOW*?

JAZZ SINGER ADELAIDE
HALL lived at 74 Drayton
Gardens. She's widely recognised
for introducing the wordless
rhythm vocalising which would
become known as scat singing. Her
eight-decade strong career has earned
her a Guinness World Record for
"the world's most enduring recording
artist."



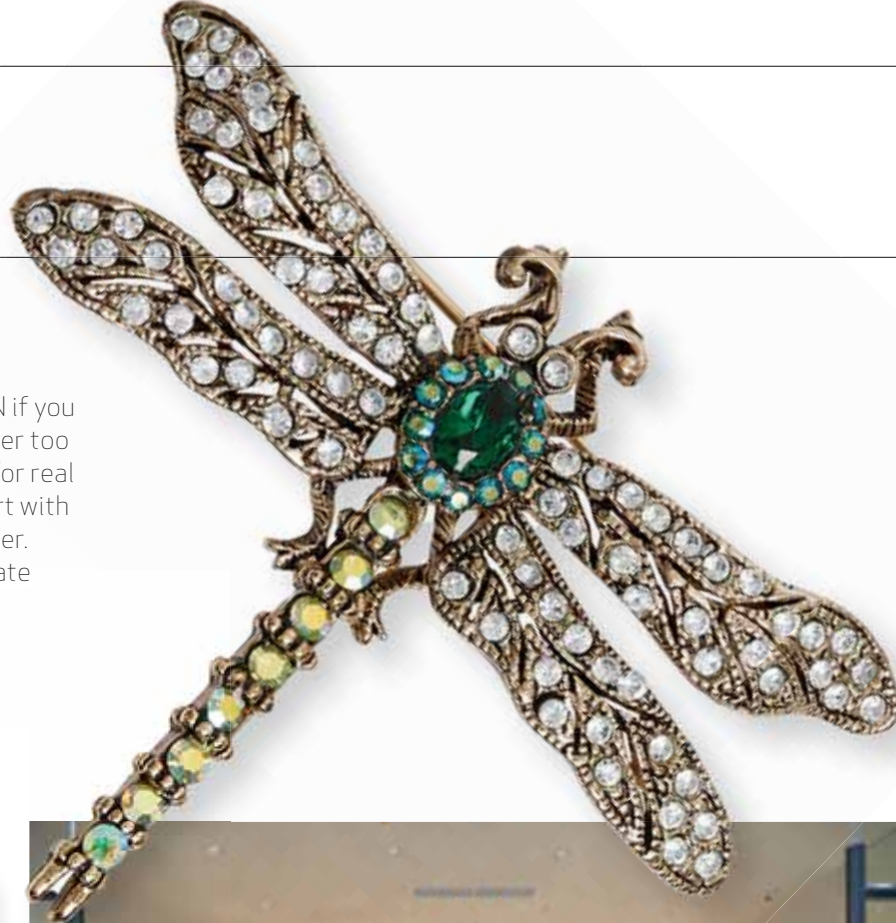
SYLVIA PANKHURST, the Suffragette and
campaigner for women's rights, lived at
120 Cheyne Walk. The same year that she
moved to Chelsea (1906) she was imprisoned
for the first time after starting a protest
at the House of Commons.
During her time in Chelsea,
Sylvia struggled for money and
lived plainly, her diet mainly consisting
of eggs, tomatoes and lentils with the
occasional cup of hot cocoa.



Fashion / News

HEAD TO BRORA FOR THE SS24 COLLECTION if you want to look classic but fashion forward. Never too trendy but always chic, pieces are designed for real women with real lives. We like the full red skirt with embroidery, as well as the bright yellow jumper. There are matching separates, too, for ultimate ease.

6 Symons Street



BOOKMARK YOUR DIARIES FOR EARLY MARCH, as H&M is opening a store in Chelsea. You'll want to run, not walk: the store will have a new concept, showcasing only the most fashion-forward products with elevated styling and trends that reflect and inspire the local area, across womenswear, beauty, shoes and accessories. There will also be exclusive in-store experiences that can only be found here.

72 King's Road.

KATE SPADE NEW YORK has launched a new fine jewellery collection of gold vermeil and sterling silver pieces, including precious-stone studs and initial pendants. Delicate enough to wear every day, but special enough to elevate any outfit.

2 Sloane Square



NOKWOL, THE BRAND KNOWN for its cool, edgy shoes has opened its first store. Men's and women's styles across trainers, heels, loafers, sandals and more abound, all made from only premium leathers and components. We love the men's Conor Leather Sneaker in white - now, we just have to keep them looking pristine.

13 King's Road

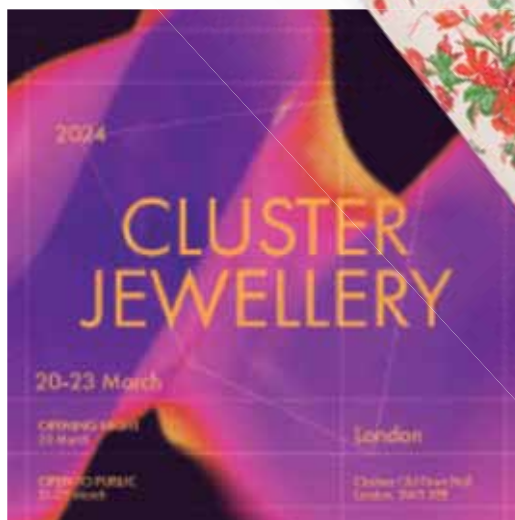


LK BENNETT'S SS24 COLLECTION is looking good. Think pops of colour, patterns - from checks to stripes and polka dots - and as ever, dresses that transition brilliantly from workwear to wedding guest attire. The floral Lucy dress has us itching for a party invitation to come our way.

18-21 King's Road

THE CLUSTER JEWELLERY ART FAIR is here and open to the public from March 21-23, 12- 8pm. Whether you're a seasoned collector, fashion enthusiast or simply want to be enthralled by all the sparkle, do come along. Explore fantastic pieces by more than 60 international contemporary jewellery artists, including Samokish, Namkyung Lee, Ro Studio, Monica Nesseler and Ellina Pollitt. Search Cluster Jewellery on Eventbrite to book a complimentary ticket.

Chelsea Old Town Hall





CAN YOU EVER HAVE TOO MUCH PINK? Not according to Dior: this pink gold, pink mother-of-pearl and diamond La D de Dior rose couture watch by Dior Watches has a bezel set with diamonds, anti-reflective sapphire crystal glass and a pink gold crown. The dial is pink mother-of-pearl and adorned with pink gold roses set with more diamonds, with polished Dauphine hands in pink gold.
198 Sloane Street



IN A DREAM COLLABORATION, Tom Davies has launched a scrumdiddlyumptious Wonka-inspired collection to celebrate the new Willy Wonka film. There are seven Wonka-inspired Catch London frames, each with a unique feature in keeping with the film. And when we say unique, we really mean wacky - one pair supposedly smells of giraffe milk.

54 Sloane Square

LUCA FALONI'S AW23 ALPINE VIEW is ideal for the last (we hope) cold snap in March. With a largely neutral colour palette, pieces are perfect for layering and our oh-so-lovely changeable weather. The cream cable-knit polo neck is our hero piece.

44 King's Road





THE 'FIREWORK MASTERPIECE' by Cassandra Goad has won four prizes at the Goldsmiths' Craftsmanship & Design Awards 2024. This unique piece of jewellery features an 18 carat gold pendant set with diamonds, aquamarines and pearls, and is available as a pendant, bracelet or brooch.

117 Sloane Street



MAJE'S NEWEST TRAINER is the M Sneaker, made from a clever mix of leather, mesh, nylon, suede, and nubuck. Inspired by traditional running shoes, the M Sneakers have a chunky sole with soft cushioning, breathable mesh and a fun design, in three colour combinations. Dress them down for an everyday trainer, but they work just as well with dresses. £259.
182a King's Road

Really Wild's SS24 collection features elegant, timeless pieces that lead straight from transitional spring wear - earth-toned jumpers and transitional blazers - to high summer: think delicious sorbet pastel suits. As ever, the brand's British heritage is a key influence, from the use of classic silhouettes to the selection of fabrics, including silk crepe de chine and linen wool blends. From £215.
53 Sloane Square





London 199 Sloane Street
Harrods, International Designer, First Floor

ermannoscervino.com



ERMANNNO SCERVINO

Fashion / Farm Rio

IF DOPAMINE DRESSING WERE A THING – and it is – then Farm Rio is where devotees would shop. Just walking into the King’s Road store is a pick-me-up: pieces are colourful, joyful and original. It sings of balmy days and all-night parties in Rio de Janeiro, which is where the brand was founded by Kátia Barros and Marcello Bastos in 1997.

“There is something unique in Rio and that is the Carioca spirit – something at Farm Rio we translate to ‘dress in happiness,’” says Kátia. “It’s this spirit that our brand experience really encapsulates.”

Farm Rio began at Babilônia Hype fair, a marketplace in Rio de Janeiro. Kátia and Marcello introduced a collection of colourful garments

and effortless attitude to dressing that’s intrinsic to the Carioca. It makes so much sense to us that they’re so popular. We love to see people all over the world embracing this lifestyle.”

As for current favourite pieces, “for SS24 we’ve created a very special capsule collection in collaboration with the Yawanawá community, who are Indigenous people from the north of Brazil”, Kátia says. “The partnership is very close to my heart and has been in the making for seven years. We wanted to celebrate the women of the community.”

The Farm Rio store itself is like a work of art. It was designed in collaboration with the Brazilian architect and designer Marcelo Rosenbaum, and is a poetic

Spreading joy

capturing the vibrant spirit of Rio, and the locals immediately fell in love with the authentic and bold designs. Propelled by the response, the duo went on to open stores across Brazil.

Today, Kátia says the brand is best known for its unique prints. “Our designs are based on Brazilian elements but with a twist, using textures, colours and prints found in Brazil’s tropical fauna and flora: from colourful flowers to leaves, flying macaws and bright toucans. We want to bring joy and optimism and also celebrate the happiness in everyday life and nature.”

This is not a brand mass-producing pieces with little thought. “Each one of our pieces is made with so much attention and teamwork – there is so much love that is put into the garments,” Kátia says. “I love our dress collection – these pieces encapsulate the laid-back

**BRAZILIAN FASHION BRAND
FARM RIO'S DESIGNS ARE
BOLD, BRIGHT AND BEAUTIFUL.
WE CAN'T GET ENOUGH**

WORDS: CHARLOTTE PASHA



interpretation of Brazilian nature – from the hand-painted tropical wallpaper and buriti straw fitting rooms to the 26-metre marquetry-crafted panel, a love letter to the Brazilian landscape that takes visitors on a journey

through the natural beauty of the country’s flora and fauna. It was designed by the Amazonian artist Maqueson Pereira da Silva using traditional marquetry techniques.

Farm Rio is seasonless, producing everything from skiwear and knitwear to swimsuits and beach attire, with everything designed in-house in Brazil. You may wonder, how does this work on the streets of London? But the beauty of Farm Rio is that it’s about adding joy to your wardrobe wherever you are.

“Our products are a playful mix of colours, textures and details that embrace authenticity and inspire self-expression,” Kátia says. “We want our community



to wear our brand authentically and we hope we can bring colour and originality to the streets of London. Our pieces can be mixed and matched with other prints or paired with solid items, where our clothing will add that unique touch to the outfit.”

It’s a wonderful addition to Chelsea – and a fitting one. “Chelsea is a neighbourhood that I deeply cherish,” Kátia says.

“The charming Pavilion Road, located conveniently near my beloved store, houses Ottolenghi, a culinary delight. The Saatchi Gallery is a captivating hub for contemporary art. For post-work drinks, the Cadogan Arms offers a cool ambience, while Vardo is a fantastic restaurant with a diverse menu. Not to be missed is de Gournay. It showcases the expertise of artists and artisans in creating bespoke wallpapers, fabrics and



porcelain pieces. Chelsea has become my sanctuary, offering unique experiences in culinary delights and artistic wonders.”

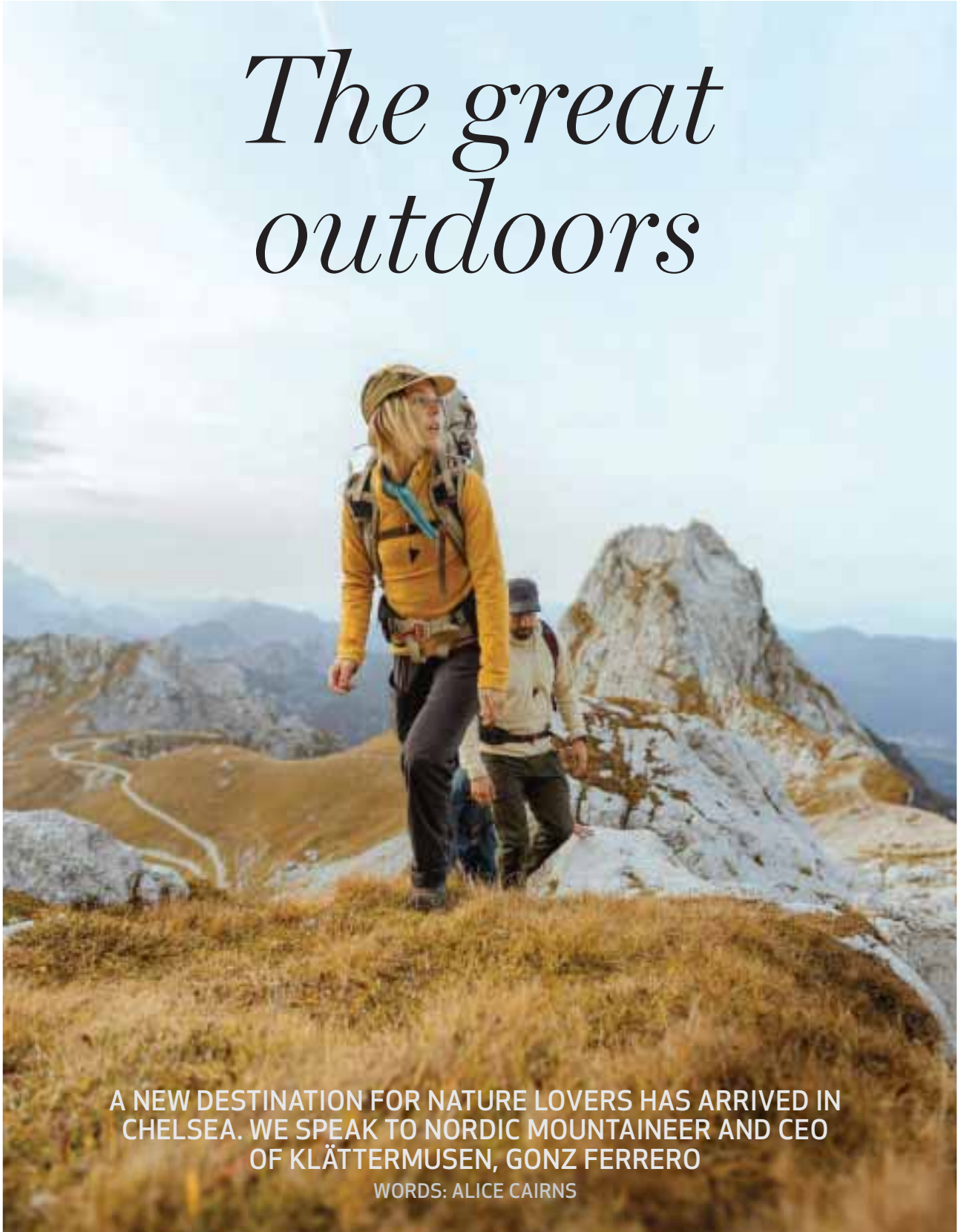
The way we dress can impact not just our mood, but those around us. “To dress in happiness is to foster a more affectionate, curious relationship with the world around you – a toes-in-the-sand, pie-in-the-sky spirit of collective optimism that delights in the imperfection

of being human,” Kátia says. “We believe clothes are tools of empowerment that can impact your mood. Statements inspired by the colours and shapes of nature can lift frequencies and emotions, creating a ripple effect of optimism.”

Clearly, we could all use a little Farm Rio in our lives.

86 King’s Road

The great outdoors



A NEW DESTINATION FOR NATURE LOVERS HAS ARRIVED IN CHELSEA. WE SPEAK TO NORDIC MOUNTAINEER AND CEO OF KLÄTTERMUSEN, GONZ FERRERO

WORDS: ALICE CAIRNS

Fashion / Klättermusen

THE SPIRIT OF THE SLOPES HAS ARRIVED on the King's Road. Founded in 1975 by a band of climbers in a mountain village in Sweden, Klättermusen creates mountaineering supplies that are smart, sustainable and stylish. Whether you're a skier, hiker, climber, explorer, or even just a casual nature lover, Klättermusen will provide you with the high-tech, rigorously tested kit you need.

"It had to be the King's Road," says Gonz Ferrero, the CEO of Klättermusen. "It has a different energy to anywhere else in London. We believe in long-term thinking, and so we've always wanted to park ourselves in a place where we could become very close with the local community. When you think about Chelsea, you think of local flower shops that have been there forever, independent bookshops where generations will shop. That's what we want to be for outerwear – a beloved local destination."

As part of this goal, the King's Road store will do things a little differently. "Shopping for a fashion item is one thing, but shopping for something that's going to keep you dry or warm or safe in the mountains invites a closer dialogue," says Gonz. "Our staff are there to advise and consult with the benefit of their experience. It will be a welcoming, informative environment for you to find your answers."

"The store will also have a flow of curated pieces, not just a big dump of our entire collection. It'll be a very dynamic store, and the same person walking in on two different Saturdays may see totally different things. So there's always a new reason for locals to stop by and have a chat."

At the centre of the Klättermusen philosophy is the importance of the great outdoors. "At Klättermusen, we often talk about the mountaineering mindset," says Gonz. "When you're out in the woods, on a hike, reading a map or under the skies, you think differently. You find a bit of mindfulness, a different point of view, from within yourself."

"The mountaineering mindset doesn't always come from climbing a mountain – it can happen when you're in the park, walking the dog. But it's something that we think is really important, and really special, so we want to provide the tools to help people access it."

For a brand that values nature so highly, it will

come as no surprise that maximum sustainability is an important goal. "We don't talk a lot, but we do a lot. We work hard to get the most function with the least impact on nature. We use natural products wherever possible, and when we need to use synthetics like polyester polyimides, we're using bio-based. I think where we anchor a lot of our sustainability is by making our products as durable as possible. Over our 50 years in business we've studied our products, noting where abrasion happens, where they're more likely to wear or go out of date, and now we try to elongate the life cycle of those products."

"In our stores we've also prioritised sustainability in our design and furniture. We couldn't say, 'look at this amazing, sustainable product, displayed in a non-sustainable retail store.' That wouldn't have felt right."



The new King's Road store, then, will be a sustainably designed, neighbourhood hub where "conscious connoisseurs", as Gonz describes Klättermusen customers, can equip themselves to explore and enjoy nature. So if you're visiting the King's Road store for the first time, what product would Gonz recommend?

"For me, it's the down shorts. They are just the best invention, although they will make you look like a martian! They're insulated shorts that you wear over your trousers, and they instantly warm up your legs – perfect for when you stop to set up a tent or take a lunch break in the mountains. They pack light and they make such a difference. But really you can't go wrong with any of our products – come in and chat to us, and we'll find the perfect thing for you."

36 King's Road



Do something amazing...

Embrace a new challenge, have the experience of a lifetime, and change young lives.

Over 40,000 teenagers and young adults are living with cancer and the lasting impact on their mental and physical health. A further 2,500 new cases will be diagnosed this year alone.

You can support Teens Unite Fighting Cancer to improve the lives of teenagers and young adults living with, and beyond, cancer.

Go the extra mile by taking on a challenge that suits you, either overseas or in the UK. There's something for everyone, from treks, cycles and runs, to skydives, wing-walks, and dancing!

To see the full calendar and register your interest, scan here:

**Or get in touch:
E: info@teensunite.org
T: 01992 440091**



Climb the Three Peaks



Cycle in Sri Lanka



Dance in the Strictly Dancing Ball

www.teensunite.org
Registered Charity Number: 1118361

teens:) unite
FIGHTING CANCER

COLD
comfort

STAY SNUG ON THE
SLOPES WITH THESE
STYLISH SKIWEAR
BUYS



KLATTERMUSEN
Draupa winter hat, £69
36 King's Road

Fashion / Trending



THE AVANTGUARD
Neroli Viva magenta
specs, £265
theavantguard.com



ANYA HINDMARCH
Snow Dry Things pouch, £195
157-158 Sloane Street



VARLEY
Mocado rib knit
leggings, £94
110-112 King's Road



IKKS
IKKS x Duvillard
ecru bodywarmer, £240
109 King's Road



KUJTEN
Striped cashmere
hood, £190
98 King's Road



INUUKII
Silver bomber star-quilted
shearling-lined boots, £335
Office, 58 King's Road



FARM RIO
New Mushroom
ski jumpsuit in
lime green, £584
86 King's Road



BRORA

Men's cashmere
fingerless gloves, £85
6 Symons Street



AMERICAN VINTAGE

Ifynk men's coat, £285
105 King's Road



JIMMY FAIRLY

The Jimmy (ski
edition), £149
170 King's Road



KITON

Cashmere high-neck
jersey, £2,200
49 Sloane Street



**BRUNELLO
CUCINELLI**

Bonded corduroy
Mountain trousers
with Thermore
padding and cargo
pockets, £2,700
159 Sloane Street



LONDON SKI CO

Cortina ski sweater,
£205
55 King's Road



CROCS

Echo boot in dusty olive, £114.99
Peter Jones, Sloane Square

SMYTHSON

Soft travel bag
in Ludlow, £1,595
141-142 Sloane Street



Fashion / Trending



IZIPIZI
Junior snow goggles, £45
53 King's Road



ADEN + ANAIS
Keep Rising boutique winter sleeping bag, £50.82
Blue Almonds, 166 Walton Street



RACHEL RILEY
Blue faux fur trim snowsuit, £109
Harrods, 87-135 Brompton Road



BONPOINT
Dodji ski pants with ink suspenders, £315
6f Sloane Street



THE LITTLE TAILOR
Oatmeal knitted body, £29
Peter Jones, Sloane Square



JACADI PARIS
Baby girl lined boots, £105
156 King's Road



MORI
Ribbed jersey pyjama set, £30
Harvey Nichols, 109-125 Knightsbridge

INTRODUCING
KNUCKLE



41 Cadogan Gardens
London
SW3 2TB
0800 138 1659
annoushka.com




Annoushka

PULLMAN EDITIONS ART DECO POSTERS



Limited to editions of 280, our newly-commissioned Art Deco posters feature glamorous holiday destinations around the world, ski resorts in the European Alps, and the world's greatest historic automobiles. Over 100 designs to choose from, all printed on 100% cotton fine art paper, measuring 97 x 65 cms. Priced at £420 each (inc. UK sales tax). Private commissions are also welcome.

 @pullmaneditionsposters

All images and text copyright © Pullman Editions 2024



Pullman Editions
94 Pimlico Road
Chelsea
London SW1W 8PL

+44 (0)20 7730 0547
info@pullmaneditions.com



Our central London gallery

View and buy online at www.pullmaneditions.com

Rixo bridal
collection
114-116 King's
Road

WEDDING *belles*

PLANNING YOUR
SPECIAL DAY? CHELSEA
IS BRIMMING WITH
BEAUTIFUL SPACES TO
SAY I DO

WORDS: SOPHIA CHARALAMBOUS

Weddings / Venues



NO FIFTY CHEYNE

Having recently acquired a wedding licence, No Fifty Cheyne makes for an idyllic venue, with views of the River Thames and Chelsea Embankment gardens.

The first-floor drawing room ceremonies are overseen by Royal Borough of Kensington and Chelsea appointed registrars and can accommodate 40 seated guests, and for weekday weddings the ground-floor 44-seater dining room is also available. Another special feature is the adjacent Vineyard space, which can be used for a drinks reception, dinner and after-dinner partying. Late licences can be applied for with entertainment from sister venue Ronnie Scott's jazz club.

Those looking to make the day truly bespoke can arrange a meeting with the head chef, Iain Smith, to work on creating an entirely bespoke menu based on your favourite foods.

50 Cheyne Walk,
events@fiftycheyne.com

For nature lovers, why not say your vows in the world's oldest and most revered botanical garden. Chelsea Physic Garden allows private access to the entire garden for the couple and their guests. There are so many special spots to choose from, including the continent's oldest pond

rockery, Victorian glasshouses, dicotyledon beds and ginkgo trees, and the garden is truly magnificent and unlike anywhere you will find in the heart of London. Food and beverage and entertainment with a dry-hire offering allows you to tailor the event to your wishes. There is space for 450 people standing and 200 seated on the main lawn, with room for 80 standing and 60 seated in the gallery. The garden caters for all types of ceremony, from religious to non-religious, and opens outdoors from May to September and indoors from January to December, on weekdays and Saturdays.

66 Royal Hospital Road, enquiries@chelseaphysicgarden.co.uk



**CHELSEA
PHYSIC
GARDEN**

Tie the knot!

SOME OF THE MOST STUNNING WEDDING VENUES AROUND

THE V&A

The V&A offers the chance to follow in the footsteps of Queen Victoria and Prince Albert, whose marriage and love for each other have been among the most revered love

stories in history. There is a dedicated events team to help you through the proceedings for each space, including the John Madejski Garden with its large water feature and Italian piazza in the heart of the museum. Another showstopper is Raphael Court, housing some of the world's most important examples of Renaissance art. It is the largest licensed space, and is available for the ceremony, drinks reception and a seated dinner for 400 guests.
Cromwell Road, corporateevents@vam.ac.uk





THE CADOGAN ARMS

Newly appointed as a licensed wedding venue, The Cadogan Arms' wedding packages include everything from weddings and civil ceremonies to canapé and cocktail parties and intimate seated meals.

The Rose Room is a dedicated events space downstairs with a horseshoe bar and space for up to 50 guests with food and drink packages.

There are many options, from exclusive hire to private and semi-private hire, and even if you wanted to marry at the nearby Chelsea register office, like Hugh Grant, Judy Garland and Bobby Moore to name a few, the Cadogan Arms provides the ideal pre- and post-wedding venue. It has recently undergone a renovation that involved recreating the lost early Georgian architectural details and ornate timber panelling of the original building.

298 King's Road, info@thecadoganarms.london

SAATCHI GALLERY

The Grade II-listed Saatchi Gallery is a unique space to celebrate your special day. There are 13 gallery rooms over three floors, which are filled with contemporary art, culture and rotating exhibitions. As a setting, it is ideal for those who love art, and everything from a wedding breakfast, reception, dinner and dancing can be arranged with the designated in-house events team, who will take care of details such as liaising with approved suppliers, to ensure the day runs as smoothly as possible.

Duke of York Square, events@saatchigallery.com



BEAVERBROOK TOWN HOUSE

Sloane Street's Beaverbrook Town House, overlooking Cadogan Gardens, is ideal for an intimate wedding ceremony and reception. A smaller guest list can be accommodated in the Butterfly Room, with its romantic pink interior, mirrored walls and butterfly artwork. The Butterfly Room and adjoining courtyard hold a wedding licence for indoor and outdoor ceremonies, with the Fuji Grill available to host a delicious wedding breakfast while Sir Frank's Bar will serve champagne and cocktails into the evening. After making the booking, contact Kensington and Chelsea register office to book your registrar.

115-116 Sloane Street, reservations@beaverbrooktownhouse.co.uk

For your little black book

ALL THAT GLITTERS

Annoushka is now offering appointments where you can design a bespoke piece of engagement jewellery. You'll visit the Chelsea studio to discuss your ideas, talk through materials and discover what's possible. Whether you're inspired by a particular gemstone, or you want your ring to seamlessly complement another piece of treasured jewellery, the team will bring your idea to life as a detailed sketch. Five to eight weeks later, you'll be able to take home your very own piece of bespoke wedding or engagement jewellery.

41 Cadogan Gardens



DRESS TO IMPRESS

Rixo has launched the sixth instalment of its vintage-inspired bridal collection. You'll find dreamy sequinned gowns, beaded trims, embroidered embellishments and even some non-traditional minis trimmed in feathers, perfect for the dancefloor. The brand also has plenty of options for your bridal party, including dresses with hand-painted prints in soft, summery pastels. If you'd like to discuss your wedding style with an expert, the King's Road flagship offers bridal styling appointments in which you and four guests can try on Rixo gowns.

114-116 King's Road



LET THEM EAT CAKE

Peggy Porschen offers customisable wedding cakes in a range of delicious flavours, including vanilla cloud, dark chocolate and lemon, raspberry and rose. You and up to 20 guests can also hire the Peggy Porschen Chelsea location for an intimate wedding celebration, taking photos beneath the beautiful flower arches and enjoying either a wedding brunch or a seasonal afternoon tea.

219 King's Road

CHELSEA'S MOST FAMOUS BRIDES

The Kensington and Chelsea register office has long been considered one of London's hippest wedding venues, attracting celebrities and creatives from James Joyce to Richard Burton. Here are some of the most famous brides to tie the knot there:

TRACEY THORN married



her musical collaborator Ben Watt in 2009. The Everything but the Girl duo chose Chelsea

for their venue because of Tracey's love of the area.

MARIE CHANTAL-MILLER,

Crown Princess of Greece and Princess of Denmark, married Prince Pavlos of Greece in 1995. The pair



had a ceremony at St Sophia's Cathedral in Bayswater before learning it was not legal as it had not been conducted in English. They returned to London and married at the Kensington and Chelsea register office, with King Constantine II as witness.

JUDY GARLAND married her



fifth husband, Mickey Deans, in 1969. Liza Minnelli, Garland's eldest child, could not

attend the ceremony but is reported to have said: "I can't make it Mama, but I promise I'll come to your next one." Contrary to this prediction, Garland remained married to Deans until her death.

TED BAKER
LONDON

Ted's Grooming Room

CHELSEA FULHAM ROAD

283 FULHAM ROAD,
CHELSEA,
LONDON, SW10 9PZ



CHELSEA KING'S ROAD

136 KING'S ROAD,
CHELSEA,
LONDON, SW3 4XB



Indulge in the ultimate grooming experience that combines Turkish skills and quintessential British style at both our Chelsea locations.

020 3397 9966
tedsgroomingroom.com

Mother's Day / Gift guide



LARGE WASH BAG
£30, Designers Guild
267-277 King's Road



**BESPOKE SILVER
OUTLINE PENDANT**
£655, Cassandra Goad
147 Sloane Street

Surprise!

MOTHER'S DAY MAY HAVE JUST GONE BUT NO ONE SHOULD NEED AN EXCUSE TO TREAT THEIR MUM TO SOMETHING SPECIAL



SLOANE STREET GIFT CARD
sloanestreet.co.uk

DOME-LINKED BRACELET
£75, Astrid & Miyu
192 King's Road

CHOCOLATE BOAT
£64.35, Läderach
27 King's Road



**THE BOOK OF
FLOWERS**
£60, Taschen
12 Duke of York Square



POPPY EARRINGS
£1,790, Anabela Chan
35b Sloane Street



THE GIFT OF GOOD HAIR VOUCHER
Limoz Logli
1a Ives Street



NEOM ORGANICS LONDON PERFECT NIGHT'S SLEEP THREE-WICK SCENTED CANDLE
£50, Peter Jones
Sloane Square



SMALL CAMERA BAG IN MARA
£575, Smythson
141-142 Sloane Street



CHARLES HEIDSIECK ROSÉ CHAMPAGNE
£90, Mother Vine
255 Pavilion Road



PINK DELIGHT BOUQUET
£60, Moyses Stevens
188 Pavilion Road

Mother's Day / Gift guide



**AUDREY ANDROMEDA
16-MOMME CRÊPE DE CHINE
EYE MASK**

£125, Olivia von Halle
190 Pavilion Road



**TEA CUP & SAUCER AND NEW BLEND
2023 EDITION CHELSEA FLOWER TEA**

£19.95 and £9.95, Partridges
2-5 Duke of York Square

**MORGANITE
AND DIAMOND
FLOWER
EARRINGS**

£4,500, Kiki
McDonough
12 Symons Street



**EMMA LEWISHAM THE
ESSENTIALS**

£90, Space NK
27 Duke of York Square



BREAKFAST IN BED TRAY
£100, The White Company
4 Symons Street

**ENGLISH
CREAMS &
CARMELS**

£46, Rococo
321 King's Road



**PLATFORM
SHEEPSKIN
MULES**

£55, Peter Jones
Sloane Square





By Appointment
to H.M. Queen Elizabeth II
Confectioners
Partridges, London

Partridges
LONDON

ENTER THE WORLD CHELSEA BUN AWARDS



Instagram & Live Tasting Competitions
Free to Enter & Fantastic Prizes to be Won

Enter by:
Friday 17th/Saturday 18th May



2024 'Floral Feasts' Theme



Guest Judges
Lady Frederick Windsor
& Jane Asher



Hosted by www.PARTRIDGES.co.uk

Chelsea Buns were first baked at the Chelsea Bun House, near Royal Hospital Road, 300 years ago. Partridges launched the World Chelsea Bun Awards in 2019 to revive interest in baking our local buns.



The World Chelsea Bun Awards has raised over £18,500 for the charity.

All entrants are invited to make a donation to www.childrenssurgeryfoundation.org to help support The Beam Campaign: Transforming intravenous (IV) access in children.

Full Entry Details:
www.worldchelseabunawards.com



Food / News

CELEBRATE THE SIX NATIONS rugby championship at the Cadogan Arms, in collaboration with Guinness. Until the finals on March 16, enjoy the Six Nations menu – think buttermilk fried chicken and black pudding scotch egg, beef and Guinness pie, beer-battered fish and chips and ham, egg and chips. Pints of Guinness will be served throughout, as well as Guinness O.O. You can even book a private screening for a larger group – the Rose room comes with its own bar and TV screens.
298 King's Road



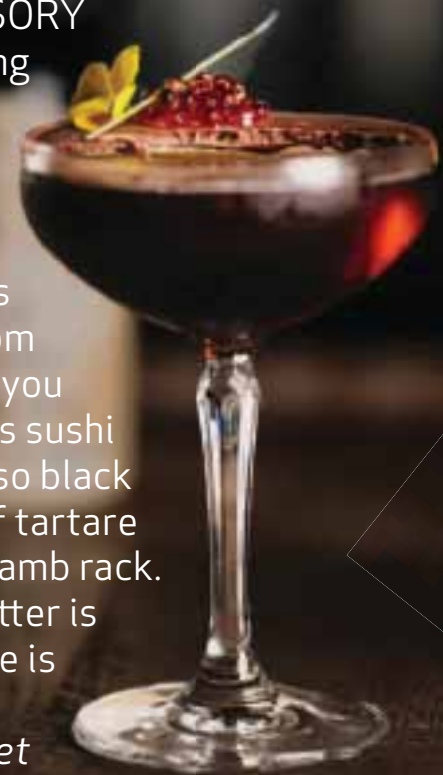
WHEN IT COMES TO HOSTING, tableware and tablescaping can matter as much as the food itself. To elevate the tone of any spring dinner party, try Addison Ross's new intricately detailed Chinoiserie collection. We love the beautiful candlestick holders to set the tone and the charming trays, perfect for cocktail hour, in an array of shades. Peruse the full collection via the Chelsea-based online furniture store the Longest Stay.

13 Radnor Walk



HOME OF SENSORY JAPANESE dining CLAP

Restaurant has made its UK debut. Enjoy epic views over London from the 6th floor as you sample delicious sushi and sashimi, miso black cod, wagyu beef tartare and marinated lamb rack. The dessert platter is epic and the vibe is fun and lively.
12-14 Basil Street



MICHELIN-STARRED CLAUDE BOSI and his wife, Lucy, have opened neighbourhood French bistro Josephine, inspired by the traditional bouchons often frequented by Claude and Lucy in his hometown of Lyon. French bistro classics include onion soup, rabbit in mustard sauce, and an endive, gruyère and walnut salad, as well as a daily plat du jour. The wine list features the typical bouchon-style metre wine, which allows guests to only pay for what they drink. Bon appétit!
315 Fulham Road



IT IS WELL WORTH EXPLORING the Ivy's Premier Rewards app, which is supported by the music legend Rod Stewart. Earn points to the equivalent of five per cent of your total spend, which can then be spent on future balances. You can also enjoy priority reservation services and a pass to the Ivy Club for two people each year with a gold membership.
197 King's Road



NOTHING SAYS EASTER LIKE chocolate, obviously. And if you're going to indulge, do so with the best: the large Birley Bakery chocolate box, £74. It contains a whopping 48 pieces – choose from white chocolate lemon matcha, dulce de leche, dark chocolate pistachio and more. Mix and match as you see fit – sharing is optional.
28-30 Cale Street

Food / News

THOSE IN THE KNOW have been quietly heading to ...At Sloane's top-floor restaurant and downstairs bar. Upstairs is open for breakfast, lunch and dinner, and dishes revolve around French classics that celebrate seasonal ingredients - do try the spicy lobster pasta, miso salmon and pain perdu; and ask to be seated at the intimate table beneath the cupola for a particularly romantic occasion. The downstairs lounge is a chic, speakeasy-style space with a dress code and private entrance on 2 Holbein Place. Think candlelight, plush banquettes and an in-house DJ.

1 Sloane Gardens



CHUCS IS LAUNCHING an evening cicchetti menu. Think nibbly bits, cheese and charcuterie, with excellent bread and cocktails, of course. *65 Lower Sloane Street*



YOUR WEEKEND WORKOUT just got a whole lot more exciting as KXU is now serving food at the weekends. The beloved midweek menu - hello, eggs and smoked salmon bagels - will now be available on Saturday and Sunday between 9am and 3pm. It may expand the menu, too, so watch this space. *241 Pavilion Road*

HAN'S

BAR & GRILL

Join us on Wednesdays for

ENTRECÔTE NIGHT

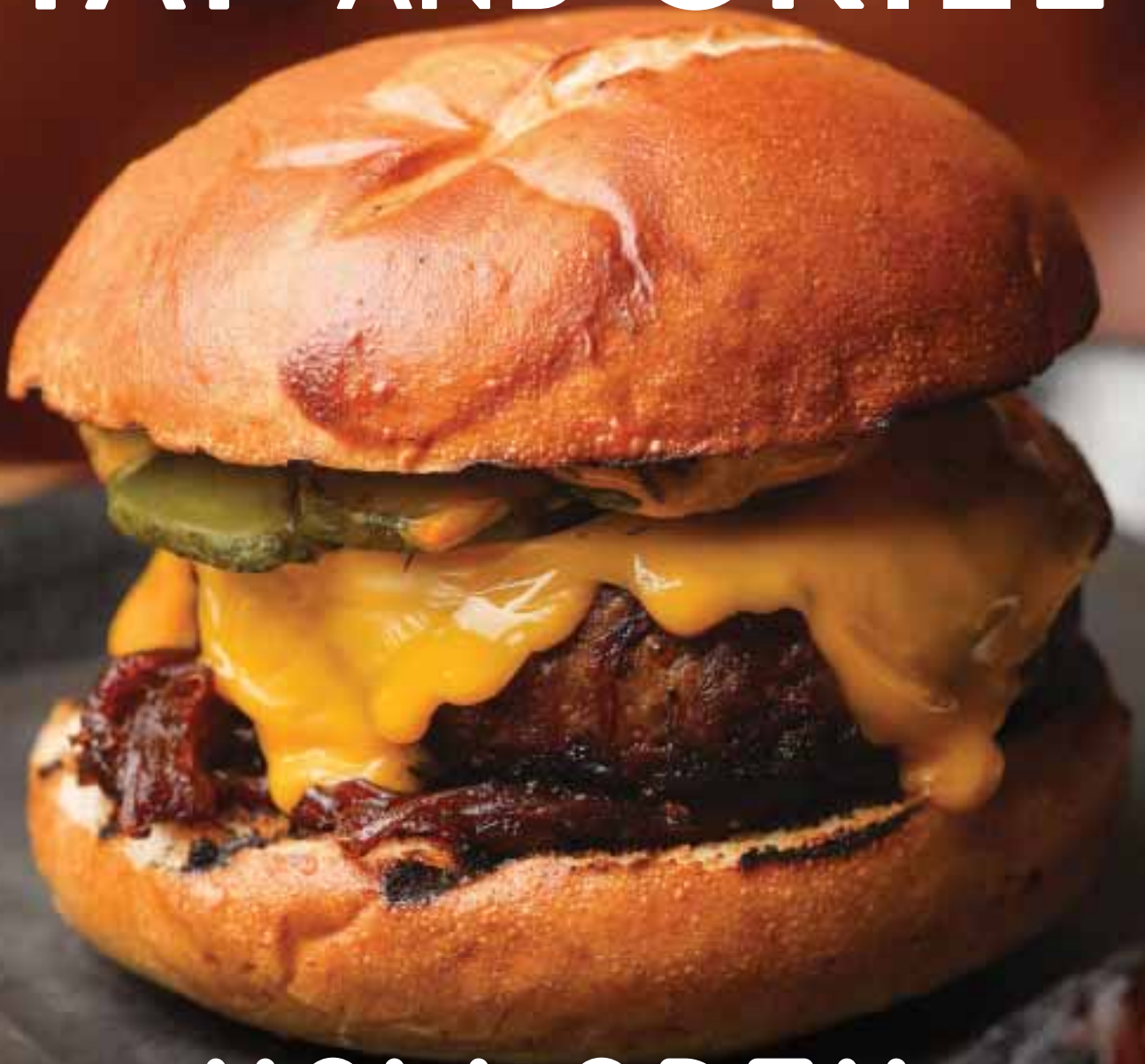


BOOK A TABLE



164 Pavilion Road, Chelsea

THE BUTCHER'S TAP AND GRILL



NOW OPEN

FIND US AT 27 TRYON STREET CHELSEA SW3 3LG

 THEBUTCHERSTAPANDGRILL.CO.UK  [THEBUTCHERSTAPANDGRILL](https://www.instagram.com/THEBUTCHERSTAPANDGRILL)




T
O
M
KERRIDGE

Food / Easter Memories

EASTER IS A TIME FOR FAMILY, FOR RELAXING – FOR FOOD. WITH SOME OF LONDON’S FINEST FOODIES RIGHT ON OUR DOORSTEP, WE ASKED LOCAL CHEFS WHAT THEY LIKE TO SERVE UP OVER THE LONG WEEKEND, FESTIVE FAVOURITES AND MEMORIES OF EASTER’S PAST

WORDS: CHARLOTTE PASHA

Tastes of spring



TONY ROBERTS,
VARDO, 9 DUKE OF
YORK SQUARE

BAKED COD, SQUID INK TAGLIOLINI AND BROWN SHRIMP BUTTER

“This is one of my favourite dishes. A lovely mixture of seafood and Italian pasta, the dish is really light and fresh. Lemon cuts through the richness of the squid ink and the delicate fish is bang on. It reminds me of my time in Italy where they had the most incredible squid ink pasta.”

Ingredients:

- 170 g Cod - fillet portions
- 30 g brown shrimp butter
- Lemon
- 2 g Chive
- 4 g Salt
- 1 g cracked black peppercorns
- 100 g fresh egg tagliolini pasta
- 100 g Nero sauce

Method:

Pan fry your cod, then roast in the oven.

In a pan of water cook the pasta.

In a saute pan melt the butter then add the pasta with some of the water from the pasta pan.

Continue cooking for 2 minutes. Add in the lemon juice, salt and pepper and half the chives.

With tongs add the pasta to a rustico bowl, place the cod on the pasta. There should be sauce and some brown shrimp left in the bottom of the saute pan- spoon this over the cod.

Garnish with the rest of the chives.



**EMILY DOBBS, LORIAN,
162B SLOANE STREET**

**CASATIELLO FRENCH TOAST
WITH CREME FRAICHE,
ORANGE, ALMOND AND
CANDIED PEEL**

“Casatiello (Neapolitan: casatiello, Italian: casatello) is a leavened savoury bread originating from Naples prepared during the Easter period containing candied peel.”

Ingredients:

- Casatiello
- Butter
- Soft brown sugar
- Icing sugar
- 3 eggs

- 30g sugar
- Pinch of salt
- 2g cinnamon
- 1g nutmeg
- 1/2 vanilla pod (seeds)
- 160g milk
- 80g double cream
-

To serve:

- Sliced oranges
- Creme fraiche
- Toasted almonds
- Candied peel

Method:

Whisk together the eggs, milk,

double cream, vanilla, nutmeg, cinnamon, sugar and salt and set aside

Cut casatiello slices 2cm thick
Toast slices

Place in soak until saturated, for 1-2 minutes on each side

Fry some butter and add a slice, cook until caramelised. Sprinkle some soft brown sugar on top and flip, cook until caramelised.

Remove and dust with sifted icing sugar

Serve with sliced oranges, creme fraiche, toasted almonds and candied peel.

ANDREA MURA, AZZURRA, 127-128 SLOANE STREET



FREGOLA AI FRUTTI DI MARE

"Where I come from, Sardinia, we mainly eat meat for Easter. But there is a dish that always works in all the festive moments which is the Fregola ai frutti di mare. Fregola is a type of durum wheat pasta, very similar to giant couscous. We cook it as a "risotto" slowly on the pan with shellfish stock and it is served with mussels, clams, langoustines and prawns. Lemon and parsley also add extra freshness."

Ingredients: (serves 4)

- 360g Fregola Sarda
- 150g Mussels
- 150g Clams
- 8 tiger prawns
- 1/2 onion (chopped)
- 2 glasses white wine
- Garlic 1 clove
- 0.2L shellfish or fish stock
- Chopped parsley
- Lemon

Method:

Bring a large pot of water to the boil, add salt and the fregola. Simmer until just al dente – around 10 minutes. Drain and set aside.

Heat a tablespoon of olive oil in a large pan and add the onion and garlic. Cook until soft and add the white wine until reduced.

Add the mussels and clams and cover them with a lid until they will open up.

Add the fregola and keep cooking with the shellfish stock for further 5 min until the stock will be reduced then add the prawns and stir to allow them to cook.

Check seasoning with salt and pepper.

to serve, stir in parsley and serve immediately with grated lemon on top.

Local hero / Norman Waidhofer

“I WAS TAKEN ON INITIALLY AS AN EMPLOYEE. In 1974 I bought out the owner and haven’t looked back.

“It was my father who suggested I take up pharmacy, because I liked medicine but didn’t want to be a GP. To be honest, every day I thank my lucky stars that I did go into it, because I like the work I do and I love the help I can give to people. It has been perfect for me and hopefully not too bad for the customers I have dealt with.”

Norman Waidhofer has a rare insight into the area, having been witness to a changing Chelsea over many decades. “I have a framed picture in the shop which shows Sloane Square as it was about 100 years ago - with horses and carriages and men in bowler hats. Then I think back to when I started 50 years ago, and that also is a magnificent change.

“The King’s Road was amazing - you had Mary Quant and miniskirts, you had punk, you had the *Rocky Horror Show*. We’ve had many famous people here. Dirk Bogarde used to have a pet name for me: Twinkle. We had prescriptions for Diana Spencer before she became the Princess of Wales; and of course Christopher Lee, who used to phone me every Friday to wish me a good weekend.”

While historically Sloane Street and its surrounding neighbourhood were predominantly used by locals, Waidhofer sees how Chelsea has now captured the imagination of many, domestically and internationally. “You only have to look at the Chelsea Flower Show and Chelsea in Bloom to see how many people know about this area and come to enjoy it. I think that a place that doesn’t evolve tends to die down, but Chelsea hasn’t.”

Daily life inside the pharmacy has also adapted since Waidhofer took over. “We had rows of powders, creams and liquids, and I had two pestles and mortars to prepare some of our products,” he says.

“In the mid-1970s, at Christmas time we would give presents to the doctors, and it would likely be a box of cigars, which makes me laugh thinking about it. Different times.”

Maintaining a sense of community is one element of running a pharmacy that hasn’t changed. “By and large, everyone around here looks after each other. We are happy that’s the case, because we feel like we are very much a part of this community.

“It’s clichéd to say it, but I do come to work with a smile on my face and a skip in my step because the people are so nice. I really do feel honoured that I’m able to work here. I think if I had worked anywhere else, I would have retired 10 years ago.”

FOR THOSE WHO LIVE AND WORK AROUND SLOANE STREET, ANDREWS PHARMACY IS AN INSTITUTION. OWNED AND OPERATED BY NORMAN WAIDHOFER SINCE 1974, BUT A PHARMACY EVEN BEFORE THAT, ANDREWS CELEBRATES 50 YEARS UNDER THE DIRECTION OF WAIDHOFER THIS YEAR - A TESTAMENT TO THE VALUABLE SERVICE HE AND HIS TEAM PROVIDE

WORDS: REYHAAN DAY

Medical man





Waidhofer sees the value of community more than ever, and still strives to help retain that feeling for those who live and work in the area. “There was always a great community, and I’m desperately trying to keep the community going. It’s more difficult now, but it will always be important - and it will become more so as we finish the refurbishments in the street and more people will see Sloane Street as a destination.”

One reason why many locals regard Andrews Pharmacy as a focal point of the community is the attention that Waidhofer gives to each and every client.

“Most people who come in here will know me by name. It’s about personal service. Everyone pays lip service to the idea that everyone should be involved in their treatment - but when you only have a 10-minute meeting with your GP, and then you don’t see them

again for another six weeks, how can that be the case? When you can speak to your pharmacist at no notice, it’s so much better for people to feel that they are contributing to their own health. It’s becoming increasingly important. It’s always nice for someone to think that there is someone out there who is interested and cares.”

With the half-century milestone just around the corner, Waidhofer has plans to remind the community that Andrews Pharmacy is very much alive and kicking.

“In the summer, we will have something in and around the shop. I’m hoping that there will be a lot of people popping round, and people will realise that we are still looking after people the way we always have. It will be a celebration.”

149B Sloane Street

Changing rooms

THE INTERIOR DESIGN SERVICE AT PETER JONES IS LITTLE KNOWN – BUT A REAL GAMECHANGER. WE SPEAK TO PARTNER AND HOME DESIGN STYLIST MENAZ PATEL TO GET THE SCOOP

AS TOLD TO: CHARLOTTE PASHA

What is the Peter Jones interior design service?

The home design service offers personalised advice and inspiration for all your interiors requirements, from basic accessories to complete room designs. We understand how overwhelming it can be when designing a space. We are here to give you the confidence to design your dream space, from the floor to the ceiling and everything in between. We can guide you through every step of the design process. Using 2D floor plans and 3D imagery, we can help you visualise how our products can work in your space.

Who is it for?

Anyone and everyone who is looking to improve their living space. The service is tailored to your needs and budget. Many people are often surprised to learn that the home design service is completely free. We don't earn a commission. We are simply here to use our skills and expertise to inspire our customers with our products.

What sort of things do people struggle with?

Working with an awkward-shaped room comes as a common dilemma. Sometimes the solution can be as easy as





"LIGHTING IS OFTEN UNDERESTIMATED, YET IT IS INSTRUMENTAL IN CREATING THE RIGHT AMBIENCE"

am lucky enough to work in a wide range of properties. I have really grown to respect and appreciate the period of a property and this is often at the forefront of my design. It's never hard to convince anyone to keep original features and characteristics. When dressed well, original features often become the highlight of a room.

What is your advice to people looking to decorate their home?

Plan, plan, plan. You can never be too prepped. The devil is in the details. Thinking about the layout, electricals, plumbing, woodwork and metals can really help the space feel well-designed and cohesive.

What are some of the key mistakes that people make?

Lighting is often underestimated, yet it is instrumental in creating the right ambience.

How has interior design changed in recent years?

Lifestyles have changed and naturally this has an impact on how we use our space. With more people working from home, we often have clients wanting to zone out their working zone from their living space.



swapping the hinges over on a door to save space, but often interior dilemmas can create opportunities for you to think outside the box. As a consequence, you have a design that is unique and special.

What have been some of your most memorable projects?

I do love designing nurseries, as quite often you can push the boundaries and be creative. Gardens and balconies are also fun to design. Simple and bold accessories can be hugely transformative.

What do you wish more people knew about interior design?

You don't have to follow trends. In London I



What are some of the most popular homeware pieces at Peter Jones?

The John Lewis Mushroom portable lamp has been a firm favourite this year. It comes in a range of soft, earthy colours. It is fun and quirky. The Lozenge sofa has been very popular

since its launch. The soft curves make it look warm and inviting, yet the design element makes a bold statement wherever it sits.

What is next for interior design?

Blue, with its many shades and hues, is making a splash in the interiors world. It's the colour of reflection, calm and trust. Watch out for the spring/summer collection.

A brighter future

THE KENSINGTON + CHELSEA FOUNDATION IS HELPING PEOPLE LIVING IN POVERTY FIND MEANINGFUL EMPLOYMENT

Last December, local data indicated there were 6,000 households in Kensington and Chelsea living in poverty, who were struggling to put food on the table and heat their homes. Determined to tackle this crisis, the Kensington + Chelsea Foundation launched a winter crisis appeal to offer residents emergency support and provide a sustainable solution, by helping those looking for employment to find meaningful work to improve their financial situation in the longer term.

With support from individuals, businesses and schools, the winter appeal has so far raised £117,983 thanks to the incredible generosity of the local community. This funding will support nine carefully selected projects helping people into employment. All of these projects have at their core a focus on one-to-one support and a genuine ambition for every service user.

One project provides learning, development and training in group and one-to-one settings for neurodiverse adults to improve their skills and confidence, helping to boost their employability.

To find out more or to make a donation, please visit thekandcfoundation.com

**Kensington
+Chelsea
Foundation**
A better life together



CADOGAN
Principal Supporter



Zeina's story highlights the difference a programme such as this can make.

As a young adult with Down syndrome, Zeina had very little exposure to the world of work. She is a very active person and enjoys practical tasks, but she struggled a lot with her communication and social interactions. This was limiting her from building social relationships and developing in a career. She would often separate herself from other students and refuse to interact with staff.

Through an employment support programme funded by the K+C Foundation, she explored opportunities to develop her vocational skills and pursue a career area of interest. Zeina loves sport and physical activity, but her ultimate dream is to work in security. The programme arranged for her to volunteer as a steward at Lord's cricket ground during the summer season, where she continued to develop her communication skills, handing out score cards and answering visitors' questions. She did a fantastic job, demonstrating how she could apply her learning to different environments.

Zeina also joined the smoothie-making social enterprise project, Fruitful, which gave her the opportunity to focus on a practical task while developing her softer skills. She has become a regular Fruitful core staff member due to her hard work, commitment and evident development. Most recently, she started a six-week work experience placement in the security team with British Land at York House, where she was responsible for checking visitor passes, carrying out patrols and monitoring CCTV.

It is remarkable how far Zeina has come in the last year, from not interacting with others to getting paid for her Fruitful work and continuing to throw herself into new employment opportunities.



FAMILIES IN DARFUR NEED OUR HELP

Kids for Kids is appealing for emergency funding to help children suffering amidst ongoing fighting in Sudan.

Out of sight, families are facing ‘the worst humanitarian crisis in the world today.’ (United Nations)

Donate now and be the beacon of hope for children on the brink of starvation.

TO DONATE:

**Scan the QR code to donate via
www.kidsforkids.org.uk or**

Text SUDANEMERGENCY to 70085 to donate £3



Registered Charity No: 1100045

A Company limited by Guarantee Registered in England & Wales No: 04607292. US Friends of Kids for Kids Registered with Global Giving 501(c)3

10



Sustainability

Looking to protect the planet by making more sustainable choices? Look no further than Chelsea!
BY ALICE CAIRNS

MIGHTIER THAN THE SWORD
Nespresso has partnered with Caran d'Ache to create a ballpoint pen from recycled Nespresso pods.
£55, Nespresso Boutique, Peter Jones, Sloane Square



SUSTAINABLE STYLE
This cool and contemporary waistcoat is made from linen which can be traced from flax seed to finished product.
£100, Aspiga, 320 King's Road



IN THE BAG
Proclaim your commitment to the planet with this 100% recycled cotton tote bag.
£115, Ganni, 94 King's Road



POSITIVE STEPS
This carbon neutral running trainer is created from sustainable materials including eyelets made from recycled plastic bottles.
£110, Allbirds, 54 King's Road



Top 10 / Sustainability



CLEAN AND GREEN

Created by a Chelsea resident, Spruce's sustainable cleaning products are refillable, non-toxic and zero waste. £7.65, *Spruce, wearespruce.co*



NOURISHING NATURE

This unique bag is designed to biodegrade and nourish the soil at the end of its life, meaning that it will never become landfill. £950, *Anya Hindmarch, 11 Pont Street*



A SEA CHANGE

These swim shorts are a collaboration with Spanish artist Okuda San Miguel and are made from 98% recycled polyamide. £260, *Vilbrequin, 23 King's Road*



BEST FOOT FORWARD

Brora is a carbon neutral brand creating cashmere in one of the last remaining vertical mills in Scotland. These bed socks will keep you cosy. £109, *Brora, 344 King's Road*

WORK IT OUT

Athleisure brand Varley has partnered with Fairly Made to allow customers to trace the journey and footprint of their clothes. *Orange jumper, £102, Varley, 110-112 King's Road*



EAR CANDY

These show-stopping earrings are made from recycled aluminium and laboratory-grown gemstones. £1,900, *Anabela Chan, 35B Sloane Street*





KEEP IN THE KNOW



We know that these days you might not be in the area every day - or you may just visit us occasionally - but you still want to keep up-to-date with what's happening locally

So why not sign up to receive the digital edition of Sloane Square and we'll send you the latest edition as it is published

That's it. You will receive no other emails or marketing material

To start the service simply visit pubbiz.com/subscribe



Beauty / News



A NEW LAUNCH FROM Drunk Elephant is the Bora Barrier repair cream (£62, Space NK, 27 Duke of York Square) – a moisturiser for the driest of skins. It is ultra-rich and clinically proven to deliver deep, 24-hour moisture that helps revive dry, tired and dull skin.

WHO NEEDS A REFORMER when you could use a Nuforma, the hottest pilates machine in town, found at Heba Pilates. Beloved by locals for its epic pilates classes that burn in a good way, you can start with an assessment and then decide if a PT or classes using the Nuforma are right for you. Expect improved strength and flexibility.
6 Burntsall Street



DERMALOGICA HAS LAUNCHED a flagship exclusive treatment and it's one to book in for immediately. Pro Skin Plus is a luxurious, 90-minute treatment tailored to your skin. It uses replenishing actives and skin firming and toning techniques to deliver super-firm skin. There's also a wonderful stress therapy back massage. Do note a patch test is required. The treatment costs £160 – to book, visit phorest.com/salon/dermdukeofyork/book.
37 Duke of York Square



DID YOU KNOW one of the best things you can do for health, wellbeing and, yes, beauty, is sleep on silk? Try Gingerlily (available at Harrods), with its silver silk bedding, sleepwear and eye masks, made from 100 per cent pure mulberry silk. Silk is naturally hypoallergenic, antimicrobial and very hygienic to sleep on – not to mention it looks beautiful and feels ultra-luxe. Silk also has a high protein content, which keeps hair smooth and skin soft, working as you sleep. We spend more than a third of our lives in bed – why not elevate the experience?



JOSH SIM IS THE MAN to know for cutting-edge facial laser treatments. He's now favouring the Clear + Brilliant laser – a less painful, lower downtime laser that works on pigmentation, fine lines and collagen production. Only a fraction of the skin is treated at a time, leaving surrounding tissues untouched and speeding up the healing process – no wonder it won best resurfacing laser treatment at the 2023 *Cosmopolitan* Holy Grail beauty awards. Be sure to ask lots of questions while you're in the chair – Josh is very knowledgeable across the skincare area.
14 Culford Gardens

THOSE IN THE KNOW head to Sadaf Jaffari for the brilliantly named Red Carpet facial – ideal for a big event as you leave feeling a million dollars. It encompasses a HydraFacial, blasts of oxygen, LED light and more, with a treatment made bespoke to your skin. Say goodbye to clogged pores and hello to a strengthened skin barrier and glowing complexion.
Basement, 6a Oakley Street



IF YOU'D LIKE YOUR face to look more sculpted, try Define Evoke Chin & Cheek at Lisa Franklin. Hands-free facial applicators use bipolar radio frequency energy to shape and contour the face. It's non surgical and gives the ultimate lift and definition for face, neck and jawline.
251 Brompton Road



IT'S OFFICIAL: THE PERFECT GIFT for mothers, brides-to-be or just about anyone is Cosmetics à la Carte's bespoke lipstick blending experience. A makeup artist will put together the lipstick of your dreams, so you can pick the perfect shade, coverage, finish and so on. You can match a discontinued shade or create something entirely new – you even get to name your very own lipstick. It's a lot of fun, too, with a glass of fizz for good measure.

£80, including the cost of the new lipstick,
192 Pavilion Road

50% OFF
With This Flyer



**STRENGTHEN & SCULPT YOUR
BODY
EFFORTLESSLY NOW!**

**WITH OUR EMS
HIFEM SYSTEM**

KNIGHTSBRIDGE
020 7245 6677

SWISS COTTAGE
020 7722 1569

**LONDON TANNING
& BEAUTY**
londontanningandbeauty.co.uk



EXCEPTIONAL HOMES DESERVE EXCEPTIONAL **HELP**

Hire private household staff to support the smooth running of your home.

Call us today on +44 207 917 1803

- Butler
- Chauffeur
- Chef
- Chief of Staff
- Close Protection
- Estate Manager
- Gardener
- Housekeeper
- Live-in Couple
- Private PA

FIERCELY DISTINCTIVE | LONDON | DUBAI | NEW YORK | ZURICH
tiger-private.com

TIGER
Private

My Chelsea / Gyles Brandreth

HOW WELL DO YOU KNOW CHELSEA?

I know it extremely well! I was brought up in Lower Sloane Street and Oakley Street, and coming here is a trip

down memory lane. In my younger days, I used to spend a lot of time at the Royal Court Theatre, which is quite wonderful. I've seen some amazing things there over the years, going right back to the 1960s, which just shows how long I've been going!

WHAT ARE YOUR FAVOURITE SPOTS?

I recommend the Cadogan Hotel. I'm the president of the Oscar Wilde Society, and that is where Oscar Wilde was arrested. You can even stay in his room. I also love all the restaurants in Sloane Square itself, particularly



Colbert, which is one of my favourite places to eat. I love shopping in Peter Jones, and my wife and I bought our bed at And So to Bed on the King's Road.

WHAT ABOUT MUSEUMS AND GALLERIES?

I love the National Army Museum. I run a project called Poetry Together, where we get older people and school children to learn a poem by heart, and then get together over coffee, tea and cake to perform it. One year, we did that at the National Army Museum.

We had an old soldier in his 90s and a 14-year-old boy performing a Siegfried Sassoon poem together. It was wonderful - very, very touching. I also love

Saatchi Gallery and the Chelsea Arts Club.

ANY OTHER CHELSEA MEMORIES?

When I was chairman of the National Playing Fields Association, we had a celebration for the Duke of Edinburgh having been president of this charity for 50 years. The Queen suggested a church service and we chose Holy Trinity on the corner of Sloane Street because it was halfway between Buckingham Palace and the headquarters of the charity. There was lots of incense, and the Duke of Edinburgh turned to me and said "this was supposed to be a celebration, not a cremation!"

WHY DO YOU LOVE THE AREA?

It's been a part of my life for so long, it's full of very happy memories for me. It's a very special place and I can't wait to visit again in April!

BROADCASTER, ACTOR, NOVELIST AND FORMER MP GYLES BRANDRETH IS VISITING CADOGAN HALL ON APRIL 26 WITH HIS SHOW GYLES BRANDRETH: CAN'T STOP TALKING. HE SHARES HIS LOVE OF ALL THINGS CHELSEA...

AS TOLD TO: ALICE CAIRNS



The image shows a bright, elegant interior space, likely a living area or a breakfast room. A large, multi-paned window with a prominent arched top section is the focal point, offering a view of a red brick building and lush greenery outside. In the foreground, two light-colored armchairs with yellow cushions are positioned around a round wooden table. On the table, there is a vase of white flowers and a tea set. To the left, a dark wooden column with a twisted design is visible. A chandelier hangs from the ceiling in the upper right corner. The overall atmosphere is one of classic luxury and comfort.

The Chelsea
Townhouse

CHELSEA'S MOST CHARMING NEW ADDITION
thechelseatownhouse.com



THE COLOUR OF EXCELLENCE

This is our green seal. Since 2015, it is the new mark of our watchmaking excellence. There is nothing to distinguish it from any official seal, yet its inscriptions and colour make it unique. Its green hue attests to the superlative standards of both quality and performance to which we hold every single element of any and all of our watches: precision, water-resistance, autonomy, reliability

and durability. For this simple seal bore witness to the epic journey each has undergone in our workshops, from initial sketch to final tests before shipping. Of all the components which compose our watches, this seal is not the hardest to manufacture but it is wholly our own and its value is immense. Because it carries the promise of our unwavering commitment.

#Perpetual

Mappin & Webb

OLD BOND STREET,
REGENT STREET,
FENCHURCH STREET

WATCHES OF
SWITZERLAND

OXFORD STREET,
KNIGHTSBRIDGE, REGENT STREET,
BATTERSEA POWER STATION


ROLEX