

# SLOAN SQU

ART \

## *Into the wild*

THE NATURAL HISTORY  
MUSEUM'S GREAT  
NEW GARDENS

## *Parties and paintbrushes*

125 YEARS OF THE  
LONDON SKETCH CLUB

## *Safe haven*

EXPLORING  
HOMELESSNESS  
THROUGH ART

## FOUR-LEGGED FASHION

STYLE FOR DOG LOVERS





ROI SOLEIL



147 SLOANE STREET

# CASSANDRA GOAD



# THE INDIAN OCEAN SALE



BALHAM - HARRODS - HAMPSTEAD  
+44 (0)20 8675 4808  
[www.indian-ocean.co.uk](http://www.indian-ocean.co.uk)

**INDIAN OCEAN**  
INSPIRATIONAL OUTDOOR FURNITURE



# Contents / September-October 2024

## 8 CALENDAR

There's so much to do in Chelsea – here's more!

## 18 NEWS

Your guide to the latest local happenings

## 24 HERITAGE QUARTER

The Chelsea History Festival gets ready to roll

## 28 CULTURE

Best-selling author, Kate Mosse, on her talks at the Chelsea History Festival

## 30 BACK TO SCHOOL

Celebrating local schools' alumni

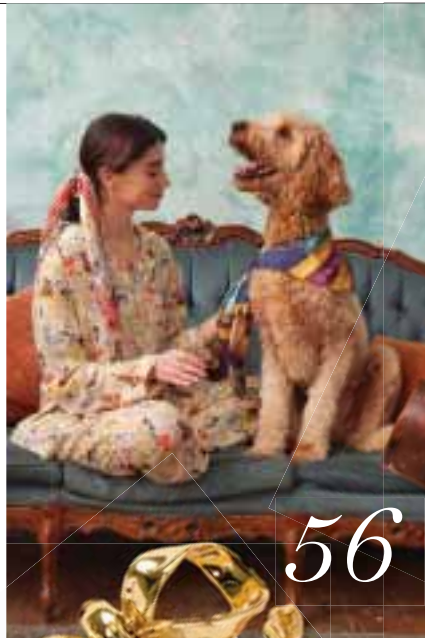


IMAGE: THE TRUSTEES OF THE NATURAL HISTORY MUSEUM, LONDON



## COVER

Louis Vuitton leads the way with a perfect product for a pampered pooch.

Page 55



## 33 ART

All kinds of exhibitions, fairs and gallery shows

## 38 ART

A unique blend of artistry and amusement at the Sketch Club

## 40 ART

Homelessness Reframed at Saatchi Gallery's thoughtful exhibition

## 42 FOOD NEWS

Try a taste of the tea grown in England at Partridges

## 48 FOOD

Birley Chocolate is unwrapped in Cale Street

## 50 FASHION NEWS

Stunning stationery and the arrival of Veronica Beard

## 55 TRENDING

Our four-legged friends find their way into fashion

## 60 BUSINESS

A dog's life is pretty perfect at Love My Human

# Contents

8

## 62 SOCIAL

Art week and Wimbledon fortnight brought vibrancy to our streets and squares

## 64 LIFESTYLE

The concierge service that loves Chelsea and lives here

## 66 COMMUNITY

Rector Brian Leathard celebrates 200 years of St Luke's

## 68 CHELSEA AWARDS

Your chance to nominate a business or person that makes our community so special

40

## 72 SUSTAINABILITY

The new, biodiverse gardens at the Natural History Museum

## 74 SUSTAINABILITY

The local businesses joining in with Recycle Week

## 76 CHARITY

Latest information from K+C Foundation

## 78 BEAUTY NEWS

Lotions, potions and perfumes to make you feel and look good

## 82 MY CHELSEA

Inside the black book of Dan McCaskie, head of concierge and guest services at Auriens Chelsea

74

30

### SLOANE SQUARE

is produced for Cadogan by

**Publishing Business**  
Berkeley Square House  
Berkeley Square  
London W1J 6BD  
020 7259 1053

### Cadogan

10 Duke of York Square  
London SW3 4LY  
cadogan.co.uk

### Editor

Alice Cairns  
020 7259 1058  
alice@pubbiz.com

### Deputy editors

Will Moffitt  
Charlotte Pasha

### Sub-editor

Kate White

### Designer

Katie Stafford

### Advertisements

Bridget Rodricks  
020 7259 1059  
bridget@pubbiz.com

Richard Taylor  
020 7259 1051  
richard@pubbiz.com

### Publisher

Adrian Day  
020 7259 1053  
adrian@pubbiz.com



This product is made of material from well-managed FSC®-certified forests and from recycled materials.

All inks vegetable based. Our printers are certified to ISO 14001 Environmental Management.

This magazine is fully recyclable, when you have finished reading it please put it in your paper recycling bin.



Publishing Business is a member of the Professional Publishers Association and observes the PPA Code of Publishing Practice.



@SloaneSquareMag  
@DOYSQ  
@SloaneStreetSW1  
@Pavilion\_road



@SloaneStreetSW1  
@PavilionRoad  
@dukeofyorksquare  
@SloaneSquareMag  
@Kingsroad.london



# Poliform





# Calendar

## FROM OCTOBER 25

### THE WORLD OF TIM BURTON

This major exhibition at the Design Museum explores Tim Burton's skills as a multidisciplinary artist. With sketches, props, storyboards and photos drawn from his personal archive, this is your chance to explore the film-maker's darkly comic inner world.

**Design Museum,  
224-238 Kensington  
High Street**

IMAGE: TIM BURTON



## SEPTEMBER 25

### MYSTERIES OF THE DEEP SEA

This talk is part of the Dig Deeper series at the Natural History Museum. Dr Adrian Glover led a team of "underwater astronauts" on an expedition to the eastern tropical Pacific Ocean. Now he's visiting the museum with a panel of his team members to discuss what life is like in the deepest parts of our oceans.

*Natural History Museum, Cromwell Road*

# Events

## SEPTEMBER & OCTOBER

# diary



## OCTOBER 19

### NEON NAKED LIFE DRAWING

It's a drawing class with a difference: all the models will be naked except for UV body paint, creating colourful glowing designs on their skin. You'll be provided with drawing materials and a complimentary shot of tequila or mezcal – all you need to do is let your creativity run wild.

**Royal Society of Sculptors,  
Dora House, 108 Old Brompton Road**





IMAGE: TAS RIGHTS MANAGEMENT, LLC

#### UNTIL SEPTEMBER 8

##### TAYLOR SWIFT: SONGBOOK TRAIL

Are you ready for it? This free trail at the V&A celebrates singer-songwriter Taylor Swift as her record-breaking Eras tour completes its European leg. Swifties will get a close-up look at 16 of Taylor's iconic outfits from award shows and music videos, as well as instruments, awards and storyboards. Each of the 13 stops on the trail will celebrate a chapter of Taylor's career, from her breakout success as a country singer to her critically acclaimed new album.

**V&A, Cromwell Road**



#### UNTIL SEPTEMBER 14

##### INTELLIGENT CHANGE POP-UP

Papersmiths is collaborating with Intelligent Change, supplier of productivity tools, to release a new five-minute journal. To celebrate the launch, the Chelsea store will be hosting meet and greets with Intelligent Change founder Mimi Ikonn. Mimi is a healthy lifestyle guru with more than one million followers on Instagram, so expect queues down Pavilion Road!

**Papersmiths, 170 Pavilion Road**



#### SEPTEMBER 20 - NOVEMBER 16

##### GIANT

It's 1983. Roald Dahl is at the height of his fame, but not everything is going to plan. His latest article has caused outcry for its antisemitism, and his family home has been rocked by conflict. Should Dahl make a public apology? This new play at the Royal Court explores reputation and dangerous rhetoric, and stars Golden Globe and Tony winner John Lithgow.

**Royal Court Theatre,  
Sloane Square**

IMAGE: JESSICA HOWES



## Calendar

### SEPTEMBER 18 AND OCTOBER 23

#### COMMUNITY CAFE

If you're new to the Chelsea community or you're looking to expand your circle, community cafe events at Peter Jones could be perfect for you. Drop in to meet other people, with a friendly host on hand to make sure that everything runs smoothly. Both sessions will take place at 10.30am and are free to attend.

**Peter Jones, Sloane Square**



### SEPTEMBER 12, 13 AND 18

#### PRIMA FACIE LIVE

As part of the National Theatre Live series, the Everyman Chelsea will be showing the critically acclaimed one-woman play *Prima Facie*. Jodie Comer plays a young barrister who specialises in defending men who are accused of sexual assault. When she herself is sexually assaulted, she's forced to question everything about the legal system she loves.

**Everyman Chelsea, 279 King's Road**

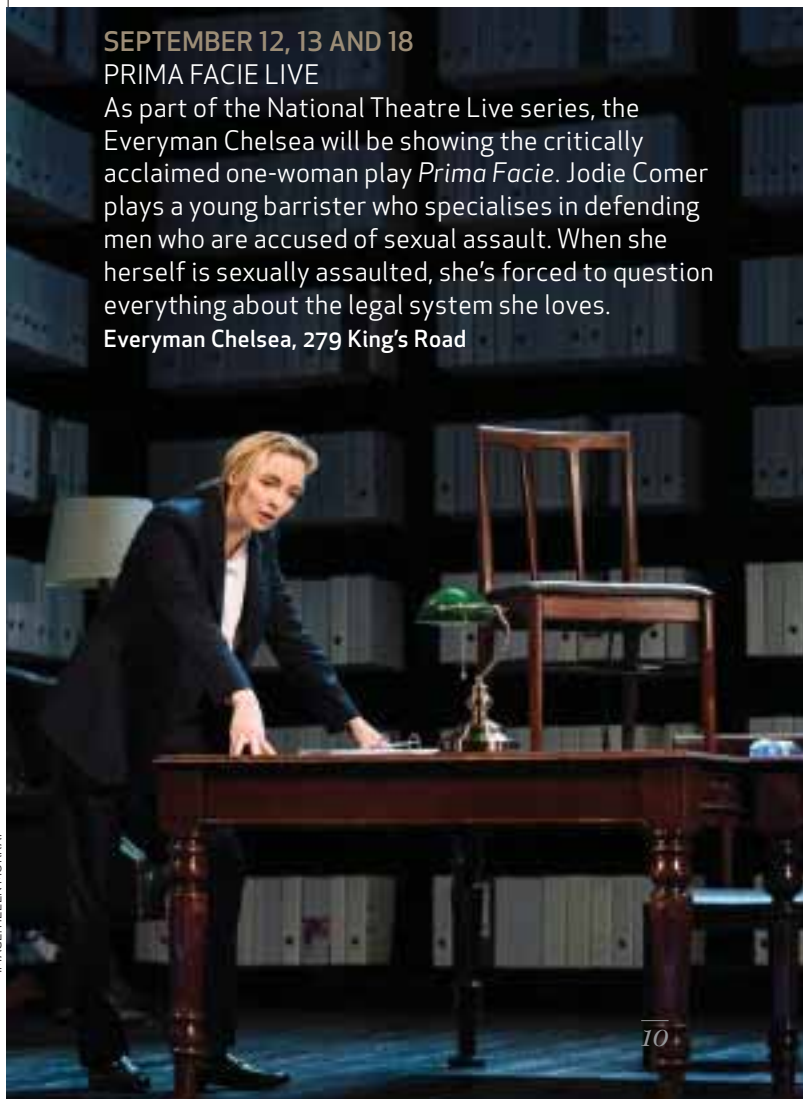
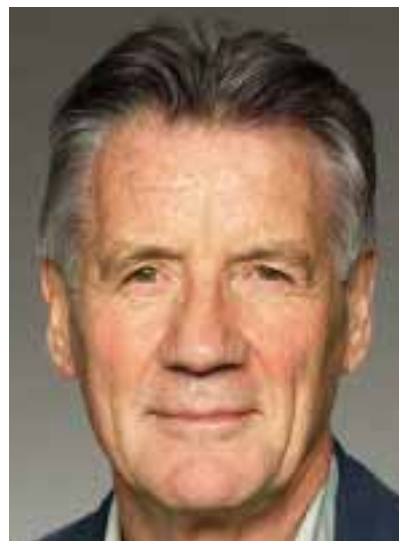


IMAGE: HELEN MURRAY



### OCTOBER 15

**MICHAEL PALIN: THERE AND BACK**  
Bestselling author Michael Palin is publishing the next instalment of his diary, this time covering the years 1999 to 2009. He'll be visiting Cadogan Hall to bring his work to life, talking us through this decade of change, conflict and new challenges. To book tickets, visit [cadoganhall.com](http://cadoganhall.com)

**Cadogan Hall, 5 Sloane Terrace**



## SEPTEMBER 13 – 17

### LONDON FASHION WEEK'S 'CITY-WIDE CELEBRATION'

Prepare for a health dose of fashion fever with exclusive, stylish experiences that include gifts with purchase, runway-ready makeup tutorials and in-store events.

**11 Cadogan Gardens** Enjoy a selection of themed cocktails at The Chelsea Bar, including the Catwalk Martini on September 13, 14, 17 and 18 from 3-11pm.

**Alo** Daily live-stream sessions, in-store activations and the Alo Runners Club and classes with community partners.

**Chicama** Offering an exclusive LFW three-course lunch menu for £40, available from September 13-17 from 12-4pm. Enjoy any signature house cocktail alongside your meal for free.

### **Cosmetics a la Carte**

Enjoy their 'Rock the Runway' special offer where a Senior Makeup Artists will teach you one fashion-forward, runway-ready eye or lip makeup technique.

### **Diptyque**

On September 14 an artist will be creating watercolour illustrations inspired by the five Essences universes – a unique keepsake for you to take home.

**Heartcore** Book your spot here for the exclusive Heartcore x Vuori movement class on September 16 from 3-4pm. All attendees will be gifted a Vuori tank and leggings set.

**Joseph** Enjoy a complimentary glass of Champagne at the Duke of York Square store from September 13-17 plus an exclusive gift with any purchase over £500.

**Meat The Fish** An exclusive three course set menu for £40 running from September 13-17. Courses include a wholesome four-hour braised Bolognese.

**PAIGE** Offering complimentary tote bags for in-store purchases over £300.

### **Penhaligon's**

Celebrate the launch of Penhaligon's 'The Dandy' with a sensory experience at their sommelier bar from September 13-17.

To book, call 020 7823 9733 or email [kingsroad@penhaligons.com](mailto:kingsroad@penhaligons.com)

**Peter Jones** Enjoy a charity fashion show with Future Dreams on



September 14 and in-conversation events throughout the week.

**Ted's Grooming Room** From September 13-18, book a fresh trim and enjoy complimentary brow trimming, ear flaming, shoulder and arm massages as well as a drink along with your service.

**The Aubrey** Sip on one complimentary cocktail from The Aubrey's cocktail menu from September 13-17 between 5-11pm.

**The Chelsea Townhouse** Enjoy the 'Sweet & Sip' experience to enjoy cakes and pastries, paired with teas, Champagne or cocktails. Available on September 13, 14, 17 and 18 from 2-6pm.

**The Fashion School** Visit their open day on September 14 from 11.30am – 4pm and September 15 from 10.30am-3pm. Meet The Fashion School Director, Caroline and the tutors. [bookwhen.com/thefashionschool/e/ev-s1cy-20240914113000](https://bookwhen.com/thefashionschool/e/ev-s1cy-20240914113000)

**The Mandarin Oriental Hotel** Introducing the 'Cocktail Catwalk' menu, available from September 1 – October 1. [kingsroad.co.uk](https://kingsroad.co.uk) for more details





ANTHROPOLOGY



COLUMN LAMP COLLECTION BY ROOTFULL, ZENA HOLLOWAY, MATERIAL MATTERS, 2024

## SEPTEMBER 14-22

### LONDON DESIGN FESTIVAL

Get ready for the 22nd instalment of the London Design Festival, celebrating London as the design capital of the world.

The Chelsea Design District is one of 11 "creative clusters", which will host workshops, talks and tours highlighting local craftspeople. You'll gain a new appreciation for the skill and innovation of Chelsea's design professionals.

*Here is a snapshot of some local events that all have free admission. There will also be several exhibitions and installations at the V&A:*



FAYE TOOGOOD AT SILVERA

**Anthropologie** Immerse yourself in a selection of homewares, thoughtfully crafted from natural, reclaimed, and recycled materials and discover an array of furniture, lighting, and handwoven textiles made from linen and jute, alongside a stunning collection of serveware and tableware.

**131-142 King's Road**

**The Conran Shop** Explore the 'New Perspective' installation. The exhibition, curated by Stella Smith, showcases the innovative work of emerging talents as they delve into the relationship between art and design through a unique exploration of form, material, and process.

**16 Sloane Square**

**Designers Guild** has announced an exclusive Knoll pop-up, opening on September 16. Iconic pieces from the Knoll brand will be reimagined with distinctive

Designers Guild flair, in this unique experience.

**267-277 King's Road**

**LEMA** Discover the Hasu armchair, promising both comfort and style by Ludovica Serafini and Roberto Palomba and browse the basement, set to house a fully furnished mini apartment.

**183 King's Road**

**Poliform** The newly renovated Poliform showroom is an expansive space showcasing distinct areas dedicated to kitchens, living spaces, bedrooms, and the highly anticipated new outdoor collection.

**278 King's Road**

**Silvera** Celebrating LDF, Silvera invite you to their 'Rude Arts Tour' by British designer Faye Toogood. Immerse yourself in a captivating showcase featuring two distinct collections that blur the lines between art and design.

**241-245 King's Road**

**For more information on Design Festival events in Chelsea visit [kingsroad.co.uk/experience/london-design-festival-2024/](https://kingsroad.co.uk/experience/london-design-festival-2024/)**

# SPECIAL EDITION

CH78 Mama Bear Chair

Hans J. Wegner

Retail prices incl. VAT.

FSC® C135991

CARLHANSEN.COM



In the celebration of the 70th anniversary for Hans J. Wegner's sculptural CH78 Mama Bear Chair, a new upholstery and colour palette is now available. The palette is inspired by Wegner's original patterns made for wallpaper design, sketched from watercolours in earthy, subdued hues. This special edition is available with an FSC™-certified oiled oak frame until January 31st, 2025. Price: £2,628 | Neck Pillow: £131

**Flagship Store London**  
48A Pimlico Road, Belgravia  
London, SW1W 8LP  
london@carlhansen.com

Monday – Friday: 10 am – 6 pm  
Saturday: 10 am – 5 pm  
+44 0 (20) 7730 8454



BY APPOINTMENT TO  
THE ROYAL DANISH COURT

## CARL HANSEN & SØN



## Calendar / Chelsea Dog Day

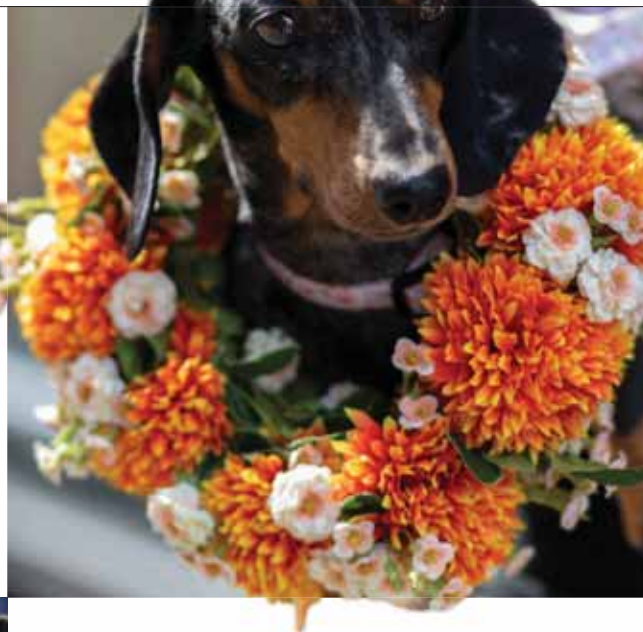
### OCTOBER 5

#### CHELSEA DOG DAY

They say every dog has its day, and that couldn't be truer for the pups of Chelsea. This October, the neighbourhood will transform into doggy heaven for a day-long celebration of Chelsea's four-legged residents.

Chelsea is one of London's most dog-friendly neighbourhoods with plenty of restaurants, bars, shops and hotels welcoming local pups. Chelsea Dog Day, organised by Cadogan, is a chance to discover more about what the area has to offer, with opportunities for shopping and fun activities for you and your pet.

A dog-friendly market in Duke of York Square



will offer plenty of treats for your pup. Meanwhile, a "pawtrait" artist will be on hand to create a lasting memento of your day, and a behaviourist will offer expert advice on getting the best from your pet.

The event will raise money for Pets As Therapy. It's a charity that strives to ensure that everyone has access to animal companionship, bringing temperament-assessed dogs into care homes, hospitals, hospices, schools and prisons.

**For more information on what to expect from Chelsea Dog Day, visit [kingsroad.co.uk](http://kingsroad.co.uk)**

*Fancy a spot of shopping? Try some of these and visit [kingsroad.co.uk](http://kingsroad.co.uk) for a map of*  
**DOG-FRIENDLY DESTINATIONS**

#### LOVE MY HUMAN

Any dog lover worth their salt should make Love My Human their first stop when visiting Chelsea. While the shop offers luxury accessories for every pup, the Love My Human Townhouse features a cafe, doggy daycare, boutique grooming and canine wellness services.

308 King's Road

#### SLOANE PLACE

Enjoy a dog-friendly stay at a hotel that will make your pup's visit just as special as yours. The "paw package" includes a luxurious bed and a goody bag containing compostable poo bags, peanut butter bones and dog shampoo. You'll also receive a dog-walking map of the local area.

60 Lower Sloane Street

#### THE PHOENIX

If you fancy a quick drink or a pub lunch, there's no need to leave your pooch at home. The Phoenix welcomes four-legged friends – in fact, it's been named one of the most dog-friendly pubs in London by *Condé Nast Traveller*. Quiz night is from 7pm every Sunday!

23 Smith Street



*The Art of Bespoke*

CHELSEA | HAMPSTEAD | HATCH END | GUILDFORD | BRENTWOOD | HAMPTON HILL



# Events / Glass Door

## OCTOBER 4

### GLASS DOOR SLEEP OUT

It's nearly time for the Glass Door Sleep Out, an annual tradition that raises vital funds and awareness for those experiencing homelessness in London. Here's your guide to taking part...

#### 1. Sign up

There are a limited number of spots on Duke of York Square,



so sign up soon to secure your place. You can participate on your own or with a group of friends or colleagues.

#### 2. Raise money

The charity asks that all participants aim to raise £500 or more with the help of the fundraising team. You'll need to create a JustGiving fundraising page so that your friends and family can donate – all money raised will be put towards providing shelter and caseworkers for those experiencing homelessness.

#### 3. Pack your essentials

Glass Door recommends that you bring warm clothes, an umbrella,

water, snacks, a sleeping mat and a roll mat, newspaper or cardboard. Please note that tents are not allowed.

#### 4. Register

Arrive at Duke of York Square between 8pm and 11pm to register and receive your

are available on-site, and there will be hot drinks and light snacks available throughout the night. There will be a first aider present throughout the event, and Glass Door staff in hi-vis jackets can provide support.

#### 7. Breakfast

Partridges will provide you with a hot breakfast of bacon and vegan bacon sandwiches at 5am before you depart. Everything must be packed up by 6am.

*Taking part in the Glass Door Sleep Out is a great way to learn more about homelessness. To take part, visit [glassdoor.org.uk](http://glassdoor.org.uk)*



wristband. You can now grab a spot on the square and prepare for the night ahead.

#### 5. Take part

At 9pm there will be a voluntary activity led by frontline workers to teach you more about homelessness in London.

#### 6. Sleep

Bathroom facilities





# HAN'S

BAR & GRILL

Join us on Wednesdays for

## ENTRECÔTE NIGHT



BOOK A TABLE



164 Pavilion Road, Chelsea

## News / September

OAKLEY STREET RESIDENT Nathalie Ohana has launched a new wellness product for dogs. Paver Water is a chicken broth-flavoured supplement that can be added to your dog's water to deliver electrolytes, collagen and vitamins, promoting the health of their bones, skin and coat. The product is stocked at Chelsea's Love My Human Townhouse. 330 King's Road



BELOVED LOCAL PHARMACIST Norman Waidhofer recently celebrated 50 years in business with a party at the Sloane Square Hotel. Norman owns Andrews Pharmacy on Sloane Street, and his half a century milestone has cemented him as a pillar of the Chelsea community. Here's to many more years!  
*149b Sloane Street*



RENOWNED AUTHOR AND CHELSEA resident Edna O'Brien has died at the age of 93. Born in County Clare, Ireland, O'Brien grew up in a strict religious family but dreamed of rebellion. Her debut novel, *The Country Girls*, was banned in Ireland due to its unflinching portrayal of sex and marriage. She went on to write more than 20 novels, tackling taboo topics including contraception, female desire, abortion and abuse. She is survived by her two sons.





SAVE THE DATE! Saturday November 16 will be the Chelsea Christmas Lights Switch-On, an unmissable event complete with Christmas market, reindeer, stilt-walkers, ballerinas – and of course, a very special visit from Father Christmas himself.

CHELSEA'S ICONIC Sloane Club is getting a £20 million makeover. The club's significant refurbishment works, now under way, include the creation of a brand new, state-of-the-art gym and studio, consultation rooms (where members can bring in their own approved practitioner should they wish), a relaxation room and an infrared sauna. The relaunched spaces are due to open in stages, starting from winter 2024.  
*52 Lower Sloane Street*

A NEW GIRLS' football league is kicking off in Kensington and Chelsea. Inspired by the success of the Lionesses, the competition is open to girls of school age. Local teams have been encouraged to sign up - if your team would like to join and be in with a chance of winning the league in its inaugural year, email [cherrelle.albert@rbkc.gov.uk](mailto:cherrelle.albert@rbkc.gov.uk)





ANGELA RIPPON RECENTLY visited Chelsea and Westminster Hospital to support the CW+ Arts for All programme, which uses dance to boost the wellbeing of the hospital community.

Angela said: "What a fascinating, fun and inspiring time I had with the Arts for All team at the Chelsea and Westminster Hospital. I was able to see for myself the truly positive effect that music and dance can have on the wellbeing and recovery of staff and patients."



SLOANE STREET AUCTIONS has opened a bar and cafe, making the most of its spacious outdoor terrace. It's open Monday to Wednesday from 8am to 5pm, and Thursday to Saturday from 8am to 9.30pm. Visit for coffees, soft drinks, wine and cocktails. Dogs are welcome!  
*158-166 Fulham Road*

SONGS AND SOUP, the community choir meeting weekly at Holy Trinity Sloane Square, will return from its summer break on September 3. The choir is open to people of all ages and abilities, including people with memory difficulty and their carers. Participants will sing a mix of show tunes, pop, folk and hymns, and afterwards enjoy a free bowl of soup.  
*Sloane Street*



# DON'T SETTLE for second best

**We will help you achieve the grades  
for your first choice university.**

MPW is renowned for its exceptional  
Russell Group placement record for  
retake students, exam preparation  
and highly flexible, short course  
retake options.



## A\*A\*A\*

Caroline joined MPW  
with BBB at A level. In  
one year, she achieved  
A\*A\*A\* and secured  
her place at the  
University of Leeds.

Call us today or visit our website

London  
020 7835 1355

[www.mpw.ac.uk](http://www.mpw.ac.uk)



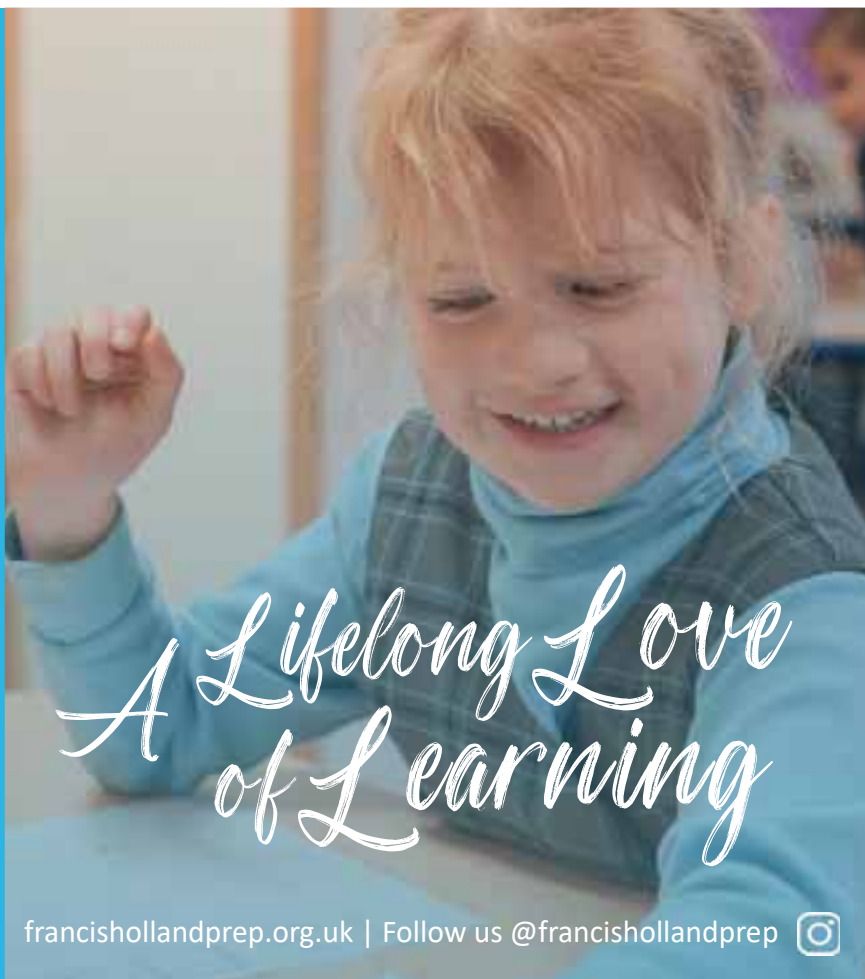
**FRANCIS HOLLAND  
PREPARATORY SCHOOL**

Leading Prep School for  
girls aged 4 to 11 in  
the heart of Chelsea

Book now for our Open Mornings  
on Monday 23<sup>rd</sup> September or  
Wednesday 16<sup>th</sup> October:



[registrar@francishollandprep.org.uk](mailto:registrar@francishollandprep.org.uk)



*A Lifelong Love  
of Learning*

[francishollandprep.org.uk](http://francishollandprep.org.uk) | Follow us @francishollandprep







TWO MEMBERS OF ROYAL HOSPITAL CHELSEA staff received awards in the King's birthday honours list. Former chief executive officer, Gary Lashko, was awarded an OBE, while residential care manager Bobbette Blake received the British Empire Medal. General Sir Adrian Bradshaw, governor of the Royal Hospital, said: "Gary and Bobbette's recognition through these awards is not only a tribute to two outstanding members of staff, but recognition for the passion and commitment of so many here supporting the care of our veterans in recognition of their service to the nation."



PARTRIDGES HAS REDUCED its carbon footprint by 36.5 per cent as part of its drive to become more sustainable. As well as evaluating its own in-store practices (including using a fully electric vehicle for deliveries), the store is also showcasing sustainable products, including its new range of teas grown in Cornwall at the UK's only tea plantation. In recognition of its efforts, Partridges has received the Planet Mark business certification for the second year in a row.  
*2-5 Duke of York Square*



THE NATURAL HISTORY MUSEUM is now home to a first-of-its-kind installation by Norwegian sound artist Jana Winderen. Jana took underwater recordings of the depths of the River Thames to create an immersive soundscape, complete with the sounds of plantlife, insects, fish and mammals. The River is free for all visitors, who can relax on beanbags in the dimly lit gallery and find themselves transported to another world.

*Cromwell Road*

# THE CADOGAN

A BELMOND HOTEL  
LONDON

*A stylish retreat in the heart of Chelsea.  
Step inside and discover an indulgent city hideaway  
where every detail weaves together past and present.*



75 Sloane Street, Chelsea, London, SW1X 9SG  
T: +44 (0) 20 7048 7141  
E: [reservations.cad@belmond.com](mailto:reservations.cad@belmond.com)  
[@belmondcadogan](https://www.belmondcadogan.com)





# Blast *from* the past

CHELSEA HISTORY FESTIVAL RETURNS  
BETWEEN 25-29 SEPTEMBER. HERE'S A  
SMALL SELECTION OF THE MANY EVENTS  
BROUGHT TO YOU BY THE RECENTLY  
LAUNCHED CHELSEA HERITAGE QUARTER

SPIES, ROYALTY, BOHEMIANS, soldiers, eccentrics, revolutionaries, singers, monks and models... the streets of Chelsea have been home to an enormous cast of colourful characters over the centuries.

That's why the Chelsea History Festival is such an exciting staple of the local calendar – your chance to learn more about the area through fascinating talks from celebrity speakers, workshops, guided walks, activities and a free family programme.

Returning for its sixth year, the festival is being staged by the Chelsea Heritage Quarter: an exciting collaboration between Chelsea Physic Garden, the National Army Museum and the Royal Hospital, supported by Cadogan.

By working together, these unique institutions hope to draw in more visitors and to inform people about Chelsea's rich heritage.

We've picked just a few unmissable events from the History Festival schedule but there are many more to discover.

[chelseaheritagequarter.co.uk/events](http://chelseaheritagequarter.co.uk/events)



# Culture / History Festival



## The Ministry of Ungentlemanly Warfare: From Page to Screen

After defeat on mainland Europe in winter 1939, Winston Churchill knew that Britain had to strike back hard. A completely new kind of warfare was born, conducted by a band of eccentric free-thinking warriors who would strike behind enemy lines.

Join author Damien Lewis at The National Army Museum as he speaks to Hollywood's go-to military advisor Paul Biddiss about bringing his bestseller, directed by Guy Ritchie and starring Henry Cavill, to the screen.

*September 28*

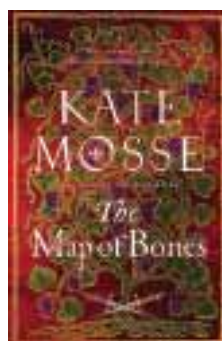
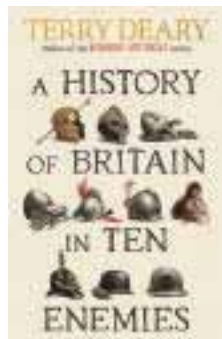
## Walking tour: Chelsea Old Village

Ever wondered how Chelsea became the bustling destination it is today? Expert tour guide Katie Wignall will take you on a whirlwind journey through its history, from its origins as the village of Cealc Hyo to its modern prominence, via royal palaces and artists' quarters. The tour starts and ends from the National Army Museum.

*September 26*

## The Map of Bones

International bestselling author Kate Mosse will be at the National Army Museum to discuss her new book, *The Map of Bones*. It follows a Huguenot refugee from war-torn France as she searches for long-lost cousin in Olifantshoek, Southern Africa – a land of deserted valleys and howling winds. Mosse



will also be giving a second talk on the same day about heroines of the Second World War.

*September 29*

## A history of Britain in ten enemies

Terry Deary, author of the wildly popular *Horrible Histories* series, will be visiting the National Army Museum to talk about the feuds, wars and rivalries that have shaped Britain.

*September 26*

## Walking tour: Queer Chelsea

Expert guide Dan de la Motte will take you on a tour of Chelsea's most important queer landmarks. Starting and ending at the National Army Museum, you'll explore Chelsea through a new lens, discovering everything from the site of lesbian nightclubs to the regular haunts of Oscar Wilde.

*September 27*

## A choral celebration of Queen Mary II

A treat for music lovers, the chapel choirs of the Old Royal Naval College and the Royal Hospital will perform a selection of pieces written for the coronation, birthday and funeral of Queen Mary II.

*September 26*

## Cadogan: A Chelsea Family

The colourful history of Chelsea and the Cadogan Family will be brought to life by





author Tamsin Perrett and editor Camilla Mountain in conversation with historian Dr Glyn Pryor at the National Army Museum.  
*September 27*

### Chelsea Physic Garden hidden treasures tour

Discover the secrets of London's oldest botanical garden, discovering hidden locations that you wouldn't have access to on a normal visit.

*September 29*

### Cassino '44

James Holland, pictured left, tells the story of the gruelling Second World War Battle of Monte Cassino, brought to vivid life by the words of those who were there. The talk, at the National Army Museum, coincides with the publication of his book *Cassino '44*, which will be available to buy at the festival.  
*September 29*

### Agent Zo

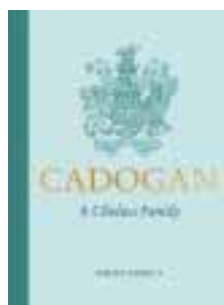
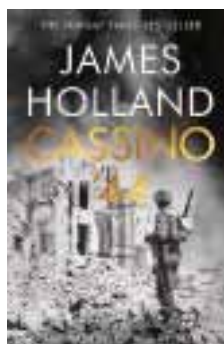
Award-winning historian Clare Mulley tells the story of Elzbieta Zawacka, a World War II Polish resistance fighter known as "Agent Zo" - secretly trained in the British countryside and then parachuted behind enemy lines in Nazi-occupied Poland.  
*September 26*

### Current defence and security challenges for NATO

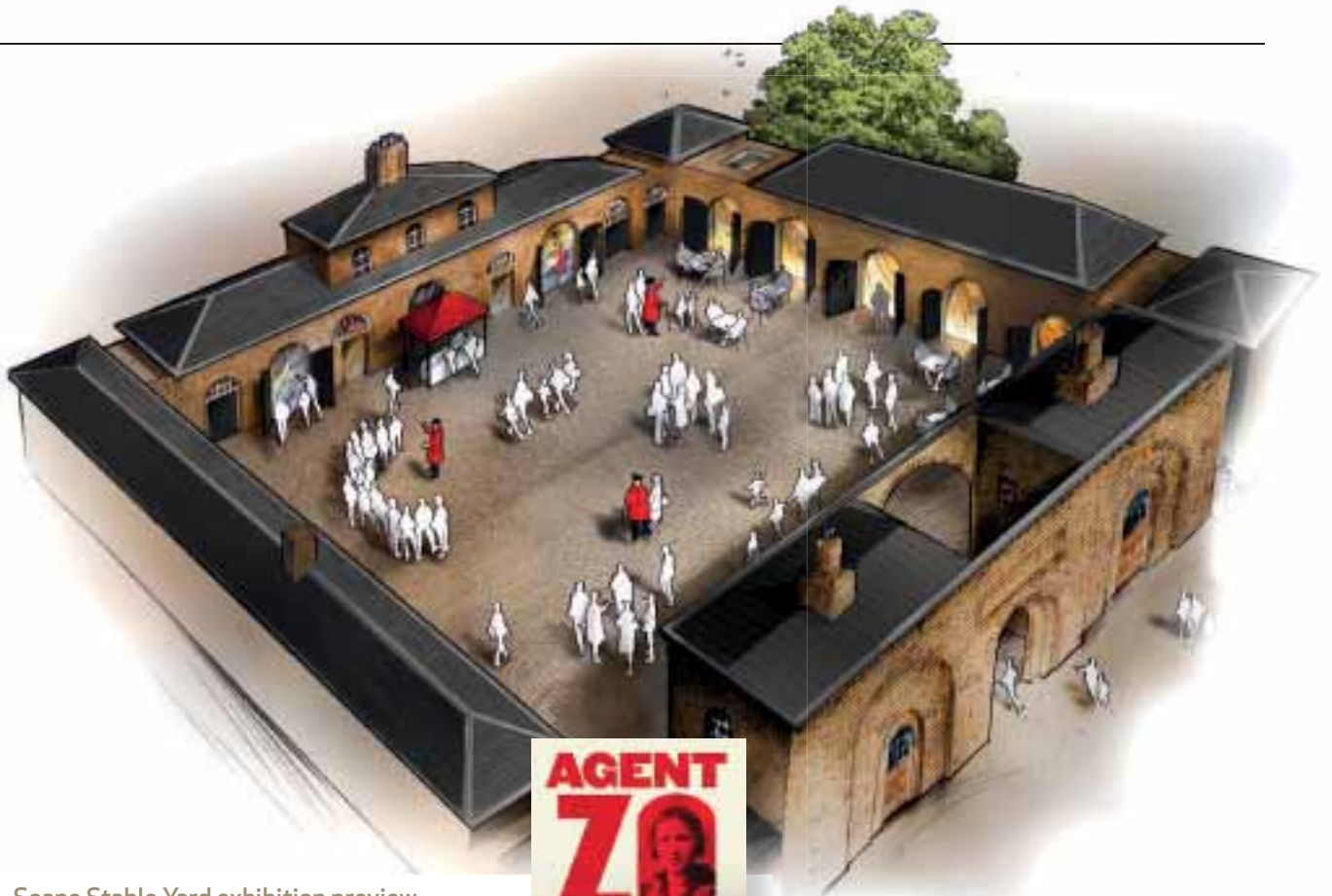
General Sir Adrian Bradshaw will give a talk at the Royal Hospital discussing the global competition between democracy and autocracy, and the threats this poses to the NATO area.  
*September 26*

### Endgame 1944

Broadcaster and author Jonathan Dimbleby discusses his new book on the year that sealed the fate of the Nazis. He has drawn on previously untranslated sources to show how the events of 1944 shaped world history and laid the foundations for the Cold War.  
*September 27*





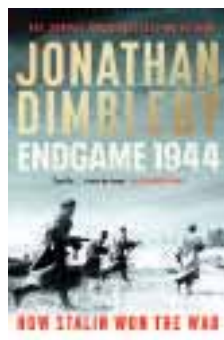
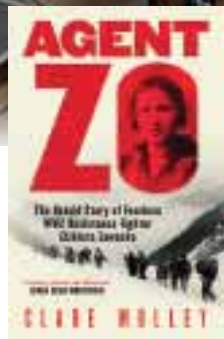


#### Soane Stable Yard exhibition preview

Thanks to National Heritage Lottery funding, the architecturally significant Soane Stable Yard at the Royal Hospital, shown above as an artist's impression, will open following a major restoration project. It's now home to a shop, a cafe, a regular programme of events and an exhibition which explores the history of the Royal Hospital and the Chelsea Pensioners. *September 25-29*

Other headline speakers include: Zaineb Badawi, Keith Lowe, Patrick Bishop and many more.

*For further information and to book tickets visit [chelseaheritagequarter.co.uk/events](http://chelseaheritagequarter.co.uk/events)*





BEST-SELLING AUTHOR KATE MOSSE IS APPEARING TWICE AT THE NATIONAL ARMY MUSEUM AS PART OF THE CHELSEA HISTORY FESTIVAL – HERE'S WHY SHE IS LOOKING FORWARD TO IT

AS TOLD TO: ADRIAN DAY

## Reflecting & *respecting*

"I'M DOING TWO EVENTS at the Chelsea History Festival, and obviously, I hope people will come to both. They're very different.

"The first one is inspired by my novel that's coming out in October. It will be one of the very first events I do about it, so it will be a sneak preview and should make it very special. The book is called *The Map of Bones*.

"I think what the Chelsea history audience will enjoy is although it's a novel, it's very much inspired by the beginning of the country that will become South Africa. So the novel is set in the 17th century, in 1688, and also in the 19th century, after the British intervention in South Africa. It's very much a story of women's history and pioneering, you know those adventuring Victorian women who went out and explored the world.

"I'm hoping that there will be a good crew in for me.

"It's been quite emotional writing the series of books, which is inspired by the Huguenot diaspora. The series of books goes from 1562, to 1862 and so it is very much the history of how Huguenots went out all over the world and the communities they made and all of that kind of thing. During the course of writing, I discovered that I had some Huguenot ancestry, which I didn't know about. So it was very surprising. I first went to Franschoek in South Africa in 2012 and that's when I started to think about a series of novels about the Huguenot diaspora, and

about how they went out and the difference they made all over the world (not least of all the UK, of course). So because it's the end of 12 years of research and work it feels quite epic.

"History is context. So you know how a particular story sits within everything that went before it and everything that went after it. Because if you don't, you don't quite know how to interpret the information you're being given.


"The second show that I'm going to do is celebrating women of the Second World War.

"I have a non-fiction book called *Warrior Queens and Quiet Revolutionaries*, and that puts 1,000 women into history, some of them are known, and some of them less known. And was an utter joy writing that book. When I was writing *Warrior Queens* I discovered that there are very few role models within the Second World War for women. The same few people get written about time and time again, but a lot of the other extraordinary women from all sorts of countries all over the world are rather left out of the history.

"Women are strong. Men and women built the world together and the thing is that often women have been written out of the history books.

"The show is a celebration of women of all nations. Women who were brave enough to stand up and do extraordinary things to protect their countries and to protect the people that they loved.

"I have German women, Japanese women and



"I'LL PROBABLY BE QUITE NERVOUS. I'LL BE TRYING THINGS OUT TO SEE WHAT PEOPLE THINK ABOUT IT. SO THAT, AGAIN, WILL MAKE THE WHOLE THING VERY SPECIAL."

Kate Mosse

Italian women in my show, because the point is that decent people, good people, stand up and refuse to go along with ideas that they don't agree with.

"I've only done the show twice so Chelsea will be only its third outing, but it feels very important to me that you celebrate and remember and honor people that did amazing things, even if they are not household names. And my aim with the show is to make all of the women in the show household names.

"I don't want people to come out of my women in the Second World War show in tears, but I have noticed that a lot of people are very moved by it.

"I have visited the National Army Museum several times as a punter and I'm looking forward to doing these events there. I very much support the sacrifice and the work that people who have fought in the arms forces, men and women, have done. So I'm thrilled to be doing these events there.

"One of the things that I've learned over the years as a writer of both non-fiction and fiction, is that sometimes you don't quite know the character of a book until you're in front of an audience, and then the questions they ask and the things that speak to them quite often shine a light on the book you've written. I very much enjoy that.

"I'll probably be quite nervous. I'll be trying things out to see what people think about it. So that, again, will make the whole thing very special."





PUPILS WITH SUZY DIXON

FRANCIS HOLLAND PREPARATORY SCHOOL IS RELOCATING FROM BELGRAVIA TO MANRESA ROAD. HEADMISTRESS SUZY DIXON TELLS US MORE

WORDS: ALICE CAIRNS

# Back to school

## WHY CHELSEA?

Chelsea is such a vibrant place. It's got an artistic side and it's full of energy. That's just what our school is like!

## WHY DID YOU DECIDE TO MOVE?

We're giving the girls the place that they deserve. They've shown us how curious and interested and hungry to learn they are – so we're responding by taking them somewhere bigger and better, with more resources.

Of course, it's not without its challenges. I keep comparing it to moving a hive of bees up the road! It's this delicate ecosystem, and moving it is both a bit dangerous and

necessary. That's not to say that I'm a queen bee...

## WILL THE MOVE CHANGE THINGS?

I've always wanted to maintain a small school of under 300 students, but this move is a chance to switch from one-form entry to two-form entry in order to embrace all the pedagogy that enables. I believe two-form entry as a model of learning is excellent, because you've got two teachers comparing, working together and researching, doubling the resources and the inspiration.

## WHAT IS SPECIAL ABOUT YOUR NEW BUILDING ON MANRESA ROAD?

It has two histories that make it the perfect fit for us. Of course it used to be the site of the Hampshire School, and the ethos of that school – led by women, finding creative ways of teaching beyond rote learning – really resonated with us. Then of course the building used to be a library – although



originally it was a library for boys only, so we're righting that wrong by moving a girls' school on to the site! But we love the fact that this building has always been a place of learning.

[fhs-sw1.org.uk](http://fhs-sw1.org.uk)



# Schools / Alumni

## CHELSEA ALUMNI

With plenty of wonderful schools, it's no surprise that Chelsea has its fair share of famous alumni...

**King Charles III** attended Hill House School, making him the first British monarch to receive an education at a school rather than from a tutor. Today, a wooden plaque at Hill House celebrates the day of the King's enrolment at the school: November 7 1956.

Nor was Charles the only royal to receive an education in Chelsea. **Lady Margarita Armstrong-Jones**, jewellery designer and granddaughter of Princess Margaret, was educated at Garden House School, as were **Eloise and Estella Taylor**, granddaughters of Prince Edward.

Chelsea has a proud tradition of creative excellence, and its schools have produced plenty of talented writers. Novelists **Edward St Aubyn, Richard Mason, David Szalay and Jason Goodwin** all attended Sussex House School. Author and journalist **Kate Reardon**, ex-editor of *Tatler*, attended Garden House School. Literary critic and gay rights campaigner **Tony Dyson**, founder of the Homosexual



Law Reform Society, was a student at Sloane School (now part of Morley College). Although she didn't attend a Chelsea school, **Virginia Woolf** spent two years teaching evening classes on a voluntary basis at Morley College.

Chelsea students have also had plenty of success in the performing arts. **Lily Allen** is a Hill House alumnus, as is Spanish singer-songwriter **Sofia Ellar**. **Stephen Hackett**, lead guitarist of Genesis, was educated at the Sloane School.

Before he became a boy wizard, **Daniel Radcliffe** was a student at Sussex House School (although as his Harry Potter commitments became more intense, Radcliffe opted to continue his education with on-set tutors). Star of the recent blockbuster *Furiosa: A Mad Max Saga*, **Anya Taylor-Joy**, was educated at Hill House School.

With Chelsea schools continuing to thrive, we look forward to discovering what a new generation of local students can achieve...

THE QUEEN RECENTLY paid a visit to Christ Church C of E primary school after one of the students sent her an invitation. Her visit coincided with the Robinson Street school's literary festival, which promotes reading for pleasure. After taking part in several classes, the Queen presented the school library with copies of some of her favourite books.



FROM TOP: KING CHARLES III, VIRGINIA WOOLF, DANIEL RADCLIFFE, LILY ALLEN



# BRITISH ART FAIR

Modern and Contemporary British Art  
[BRITISHARTFAIR.CO.UK](https://BRITISHARTFAIR.CO.UK)

26 – 29 September 2024  
**Saatchi Gallery, London SW3 4RY**

Artwork: Detail from Albert Irvin OBE RA,  
'Louise I', 2002 printed and published by  
Advanced Graphics London.

HEADLINE PARTNER

**POWERHOUSE**

CHELSEA WATERFRONT

Scan the QR code for  
2 for 1 tickets or enter  
'ASQM24' at checkout



SEPTEMBER 12 – OCTOBER 12

**Lee Andre: New Work**

Created as a reaction to the modern ease, Lee Andre's drawings are the construction and destruction. "accidents," the artist has said. have laboured on for days monochromatic and finely Jonathan Cooper gallery, exposing neuroticism, lightness to introspection. Her subjects range from the beautiful to the ugly and from the massive to the tiny, with endangered animals holding a special place in her heart.

20 Park Walk



necessity of speed, newness and disposable products of a process that oscillates between "My drawings are composed of thousands of "I have to be willing to destroy portions that I may or weeks; there isn't a linear path to completion." Andre's textured charcoal drawings of animals will be exhibited at viewers to a broad spectrum of emotions, from contentment to



SEPTEMBER 11-27

**From Rome to Granada: Where Trees Whisper the Tales of Time**

Having studied at Saint Martin's School of Art and École des Beaux-Arts, Paris, Katharine Edwards now works in the UK, Spain and Italy. Her large landscape paintings are an exploration of pattern and colour and her subjects include the iconic pine trees of Rome; eagles soaring over the scorched Andalusian plains; Mediterranean vistas and more. Featured in private collections in Europe, the US, Australia, New Zealand and Hong Kong – including the Contemporary Art Society for Wales and ING bank – Katharine's work comes to Cricket Fine Art this September. Her vibrant depictions of European landscapes are broken down to deceptively simple lines; exploring the tension between the vertical and horizontal in these vast open spaces.

2 Park Walk

UNTIL SEPTEMBER 20

**The Landscape, Reimagined**

While British audiences have become accustomed to the conventional landscape painting of classical artists such as Turner, Constable and Gainsborough, in recent years the painted landscape has been reinvigorated. Presented by Beers London, The Landscape, Reimagined at Saatchi Gallery brings together eight internationally based emerging and mid-career artists who reinterpret the category as radical and contemporary. Diverse in style but united in their ambition to experiment and recontextualise the art form in a fresh light via new techniques, interpretations or representational devices, these contemporary landscape painters embrace both crude, abstract tendencies and forward-thinking formats to re-energise a familiar genre.

Duke of York Square





### British Art Fair returns to Chelsea with work by national icons and a landmark new section dedicated exclusively to digital art

Founded in 1988 by Gay Hutson, British Art Fair has long been an exemplar of national talent. Set within the iconic Saatchi Gallery in the heart of Chelsea – the fairs' location since 2018 – leading dealers from across the UK will again exhibit a variety of ambitious and rare works from Britain's most celebrated artists.

This year's iteration will platform British icons such as Albert Irvin, David Hockney, Frank Auerbach, L.S. Lowry, Barbara Hepworth, Damien Hirst and Tracey Emin. The 2024 edition also sees the return of solo contemporary, a platform for the UK's most talented living artists, and charity partner WaterAid will auction works by celebrity artists.



- a collector of digital artworks
- Rebekah has assembled a roster of digital art luminaries who are pushing the medium in thoughtful and bold directions.

A prominent academic and artist Rebekah hopes that the new category can bring the tech-savvy artform to mainstream popularity and provide an “understanding of the context and history of digital art”.

Drawing inspiration from the trailblazing 1997 Sensation exhibition, helmed by Charles Saatchi, that catapulted a generation of Young British Artists (YBAs) to fame, the curator wants to champion digital artists as a fluid and dynamic but ultimately cohesive movement. And where better to do it than at Saatchi?

Rebekah draws parallels with the inaugural Impressionism show of April 1874, which celebrates its 150th anniversary this year. “That’s what launched the avant garde. It was the shock and awe of that show being put alongside the official salon,” she explains. “We started to ask: aren’t we at that same point?”

A digital art evangelist who believes in the power of new technologies to spark creative experiments and unearth radical forms of artistic production,

Rebekah challenges fears that the machines are doing too much of the heavy lifting.

“The computer is another tool. It’s like an artist using a paintbrush. Nothing happens without that human intervention.. Nothing is replacing anything... It’s another form of expression. There are other ways to create and reflect the world that we live in.”

*British Art Fair runs from September 26-29 at Saatchi Gallery*



There will also be a special exhibition coordinated by the Wilhelmina Barns-Graham Trust who will be exhibiting a selection of Barns-Graham’s works alongside pieces by six contemporary artists supported by the Trust.

A landmark new section dedicated exclusively to digital art will see the event breaking new ground. Centred around the notion of ‘Digitalism’ – the myriad forms in which digital technologies are being used for creative expression – it marks the first time a UK art fair has dedicated an entire section to digital art.

“One of the aims of this show is to educate and I don’t mean that in a pompous way,” explains Rebekah Tolley-Georgiou, curator of the new category. Born from a discussion with the fair’s director Will Ramsay



An abstract painting featuring a large, bright white circle in the upper center, surrounded by a thick, textured blue ring. Below this, there are swirling, textured areas of blue, yellow, and green, suggesting a landscape or a celestial body. The background is a dark, mottled blue and brown.

# jc gallery

LONDON'S LEADING SPECIALISTS IN AMERICAN MODERNISM

14a Hay Hill, Mayfair, London, W1J 8NZ  
0207 6291323 | [jc-gallery.com](http://jc-gallery.com) | [@jcgallerymayfair](https://www.instagram.com/jcgallerymayfair)



## **'A Day in Your Life', the local photography competition for young artists founded by BAFTA award-winning artist Alison Jackson, is now open for entries.**

The competition is open to anyone from 5 years and over who lives, works or studies in The Royal

Borough of Kensington and Chelsea, using a phone or camera, from any skill level. The photographs seek to represent these extraordinary times, from climate change, living with a disability, supporting your friends, families, or local businesses. Or perhaps even simply your view of Chelsea and what it means to you.

The winners will have their work exhibited at Cadogan Hall, with many prizes including cameras and short courses from the University of the Arts, bursaries and mentorships.

*For more details see [dayinyourlife.co.uk/competition](http://dayinyourlife.co.uk/competition)*

*Entries close November 1*



ENTRIES FROM LAST YEARS COMPETITION

## **An exhibition at Green & Stone gallery by Charlotte Durie draws parallels between Chelsea's winding alleyways and the tangled northern forests of Minnesota**

"I may have been living in Wales for 33 years, but I always have a sense of coming home when I'm in Chelsea," Charlotte Durie tells me. Now spending her time

between Montgomeryshire and a cabin in Minnesota, Charlotte spent her teenage years in Chelsea, where her father lived. A novelist himself, he befriended a circle of writers and artists who in their own ways came to shape Charlotte's creative impulse and love of art.

One of these was the pioneering American artist RB Kitaj, who became known for his collage-style paintings that drew on his deep interest in history and social and political identity.

Kitaj had a home studio in Elm Park Gardens, where Charlotte modelled for him as a teenager. She also modelled for the artist and children's author Jan Pieńkowski, and spent time with the Czech-British sculptor Franta Belsky

– known for his iconographic statues and busts of Winston Churchill and members of the British royal family – and the trailblazing British abstract painter Rodrigo Moynihan.

Those encounters inspired Charlotte to pursue painting when she moved to Wales in her early 20s to raise her children. She sold her first painting at the Aberystwyth Open in 1992 and her depictions of horses have exhibited with the Society of Equestrian Artists in London's Mall Galleries and in Newmarket.

Her exhibition at Green & Stone gallery, titled *I Am Here*, draws parallels between Chelsea's winding alleyways and the tangled forests of Minnesota. Her connection to the rugged American



Founder Alison Jackson said:  
*"Everyone should have a chance to shine. The reason I started this photography competition was for everyone to have the same fantastic opportunities*

*I have had within the Royal Borough of Kensington and Chelsea, specifically the outstanding education available that can lead to so much more. I was offered my first BBC award-winning TV series whilst I was fresh out of college in RBKC, so I have made the*

*prizes primarily educational and vocational. There are many extremely talented people out there and I want to give a chance to those who haven't had one before. I want to discover new talent and aspiring photographers with fresh ways of seeing."*



midwest was sparked by her grandfather, who built a cabin on the shores of Lake Superior.

In those twisting paths of Minnesota's northern pine forests and Chelsea's meandering alleyways and backstreets, Charlotte finds a deep sense of intrigue and

mystery. Rich in nostalgia and indelible memories, the exhibition is a meditation on home and human curiosity.

"[Chelsea's] familiar streets have not changed a great deal in my lifetime and my father still lives where he and I grew up, so the roots remain intact," Charlotte

says. "My memories are intermingled with his and my grandmothers' anecdotes.

The stories of people enrich the location, and Chelsea is abundant with them."

*I Am Here runs from September 9-14 at Green & Stone gallery, 251-253 Fulham Road*

THIS FEATURE, TOP FROM LEFT: NEON DUSK, GRANNY USED TO PARK HERE, EMERALD CITY. LEFT: CHARLOTTE DURIE  
 IMAGE: POLLY LOVEGROVE





THE LONDON SKETCH CLUB, WHICH TURNED 125 LAST YEAR,  
OFFERS A UNIQUE BLEND OF ARTISTRY AND AMUSEMENT

WORDS: ALICE CAIRNS

# *Creative* **CHARACTERS**

ON APRIL FOOL'S DAY, 1898, artists Cecil Aldin, Phil May and Dudley Hardy signed the lease for their new club (then based on Wells Street). Not content to sign the documents in the usual way, May decided to impersonate King John signing the Magna Carta – Aldin knelt at his feet like a baron, holding the pen and document, while Hardy stood by with a formidable truncheon.

This was the London Sketch Club in a nutshell. It's an artistic institution that's been going strong for more than a century, attracting creative characters and mischievous eccentrics with its blend of artistic



# Art / Sketch Club

"OVER THE YEARS THE SKETCH CLUB HAS BEEN A HOME FOR ILLUSTRATORS AND ARTISTS"

excellence (weekly life drawing and portraiture classes) as well as extra-curricular fun (themed parties, balls, dinners and lashings of fancy dress).

The club's current president, Anthony Cohen, has now published *The London Sketch Club 1898-2023: A Visual Celebration*, honouring its 125 years of creative contribution to London life.

"The book is about the history of the club and the people involved with it, some of whom - like W Heath Robinson, John Hassall and Edmund Dulac - were some of the most prolific and well-known cartoonists and illustrators of their day," says Anthony.

Despite its star-studded list of members, the London Sketch Club was never a stuffy institution. Whether it was sketching on the shirts of unsuspecting visitors, or dressing in drag for themed fancy dress nights, the club has always been a place for what Anthony calls the "slightly mischievous".

"Members would meet every Tuesday evening, and they'd be given a subject for drawing - it might be something like 'a tranquil scene', 'tally ho', 'where lovers meet' or 'Santa Claus'. They would then sit down and draw something inspired by that theme, making it up on the spot. Then after they'd finished sketching, they'd have a dinner. They'd have entertainers visit the club, too - people like Charlie Chaplin and Stanley Holloway."

Its blend of conviviality and talent attracted more and more members, cementing the club's place as an artistic institution. In 1957 it moved to Dilke Street, to a building that had once been the studio of Victorian portrait painter John Collier, capitalising on its close ties with the Chelsea Arts Club and the rest of Chelsea's creative community.

Today the Sketch Club continues to thrive, drawing in new crowds of artists - including female members.



"It was an all-male club until fairly recently," Anthony says. "We'd thought for quite a long time that it was silly, not having women members. Then during the pandemic we were doing Zoom classes and my wife joined in, and somebody else's wife joined in, and now we have about a dozen women members. It's completely changed the club, which is what we intended it to do."

The London Sketch Club still holds weekly classes for non-members (which take place every Thursday) as well as the fancy dress dinners, themed nights and celebrations.

"Over the years the Sketch Club has been a home for illustrators and artists, and so looking back through our very rich archive of illustrations, posters and invitations also shows you how art has developed over the last 126 years," Anthony says.

"It's part of the tradition of appreciating drawing - traditional life drawing - as an art form. I hope people will enjoy learning more about our history." Copies of Anthony's book are available from the *London Sketch Club, 7 Dilke Street*





UCHE IN BEDROOM

# Highlighting HOMELESSNESS

LOOK AT HOMELESSNESS FROM A NEW PERSPECTIVE  
WITH THIS GROUNDBREAKING EXHIBITION

WORDS: ALICE CAIRNS



BRIAN, SOHO

ACCORDING TO FIGURES FROM CHELSEA charity Glass Door, the number of people sleeping rough has reached an all-time high: increasing 19% in just one year.

Prince William's Homewards programme aims to build a path to end homelessness for good. In collaboration with Saatchi Gallery and Eleven Eleven Foundation, the programme has launched the Homelessness: Reframed exhibition, which uses art to share the stories of those who experience homelessness.

The exhibition is split into three parts, each of which explores a different aspect of homelessness. In the first part, you'll see a collection of poignant signs created by people experiencing homelessness across the world. In the second part, artists meditate on what it means to be homeless, in some cases drawing on their own experiences. In the final part, art by young people points

"WE'D ENCOURAGE VISITORS TO APPROACH THIS EXHIBITION WITH AN OPEN MIND"



LOISE WITH BABY



GREG AND ROXY



KIARA



MICHELLE, MANCHESTER



BILLY IN HIS TENT

to possible paths out of homelessness. Artists include those with lived experience of rough sleeping, as well as young people who attended creative workshops.

Paul Foster, director of Saatchi Gallery, said: "Art has the ability to open our eyes to issues. Work by artists with lived experience, and by workshop participants with no art background, reminds us that creativity is not

dependent on any status in society and that art offers a means for us to understand the challenges facing so many fellow citizens.

"We'd encourage visitors to approach this exhibition with an open mind and to question any assumptions they might have about those experiencing homelessness." *Until September 20, Saatchi Gallery, Duke of York Square*



## Food / News

DEZ AMORE RESTAURANT is now open at 273 Fulham Road and is well worth a visit for authentic Italian food that is reminiscent of Grandma's house. There are traditional antipasti boards, handmade pasta dishes and desserts from gelateria Badiani 1932. The vibe is classic Italian - with a retro twist.



**THE FINE-DINING** Japanese restaurant at Beaverbrook Town House has recently launched new menus. Sushi and sashimi may lead the way but don't skip dessert: following the success of the beautifully presented lunchtime bento boxes, the restaurant has launched a deluxe dessert bento, featuring a trio of yuzu cheesecake, milk chocolate mousse and matcha-misu. 115-116 Sloane Street

**RUN, DON'T WALK**, to soak up the last of The Cadogan hotel's summer partnership with premium wine estate Château d'Esclans, with the hotel's rosé terrace open from 11am to midnight until September 27. Take a seat among lush green foliage as you sip on delicious rosés such as the world-class Garrus, available by the glass with tasting notes of glazed pear and pineapple; Les Clans and Château D'Esclans, described as a rare gem from the heart of Provence. Of course, there's everyone's favourite Whispering Angel, best enjoyed with the new small plates menu inspired by the south of France.

75 Sloane Street





**GOOD NEWS FOR** the sweet-toothed as it's Chocolate Week from 16-22 October. To show your favourite chocoholics you care, head to some of Chelsea's finest chocolatiers, like Laderach (27 King's Road), Knoop's (69 King's Road) and Venchi (71 King's Road.) Truffles, white, dark, pralines - the list is endless. And in perfect timing, Birley Chocolate has opened its much-anticipated dedicated Birley Chocolate shop at 24 Cale Street. Pop along for a chocolate sable with your morning coffee: everything is sublimely delicious and the beautiful hand-painted interiors are worth a visit all on their own. *For more on Birley Chocolate see page 48.*

BREAD AHEAD HAS a new afternoon tea menu for £35 per person. Think bridge rolls with a choice of four fillings, founder Matthew Jones's chocolate cake and of course, warm scones. Plus, check out the working breakfast and lunch packages: the business breakfast is £19.50 per person and includes a pastry basket, toast and preserves and fresh orange juice, while the business lunch is £25 per person and includes egg mayonnaise rolls and a fresh fruit platter.  
249 Pavilion Road





A NEW YORK-STYLE pizzeria has opened. Alley Cats is known for its epic 14-inch pizzas, which are made from top quality southern Italian produce: San Marzano tomatoes, creamy buffalo mozzarella from Campania and aged mozzarella from Molise. Head chef Francesco Macri uses recipes passed down from his grandmother: try the vodka sauce, made using slow-cooked vodka in creamy tomato sauce, or opt for one of the white-base pizzas – we like the wild mushroom, with taleggio cheese, aged mozzarella, red onion jam and fried sage. There's a fun atmosphere, too – episodes of *The Sopranos* play on an endless loop. Walk-in only.  
342 King's Road



FINE-DINING Japanese restaurant Clap London is launching a new brunch, which takes place every Saturday from 12pm to 3pm for £75. Enjoy a signature cocktail, the Clap Sakura Highball, before indulging in sushi, sashimi and ceviche to start, followed by a main course and sharing dessert. Expect DJs, a roaming musician and a great vibe.  
12-14 Basil Street



PARTRIDGES HAS LAUNCHED three new blended teas containing leaves grown at the Tregothnan Estate in Truro, Cornwall – England's only tea plantation. Try the Partridges Mr Shepherd's blend (£7.95) black tea: handcrafted for John Shepherd, it is plucked by the world's first solar-powered tea robot in the Tregothnan tea gardens and blended with the finest Glenburn Assam. The tea bags and packaging are 100 per cent plastic-free and compostable.  
2-5 Duke of York Square

# Away HOLIDAYS



Scan for offers

## Bask in the Winter Sun for Less

Elevate your winter escape with Away Holidays, where luxury meets value in the most exquisite destinations. Away Holidays invites you to bask in the unparalleled beauty of the Maldives, with its lavish overwater villas and azure waters. Imagine savouring the serene beaches of Thailand, the lush landscapes of Bali, or the refined elegance of Malaysia's tropical islands. Discover the cultural richness of Sri Lanka's coastal retreats, the sophisticated charm of Doha's modern marvels, and many more destinations designed to enchant and delight.

With our flexible Book Now, Pay Later option, securing your dream vacation is both seamless and stress-free. Begin planning your exceptional family getaway today and indulge in sun-drenched luxury at a remarkable value.



**AwayHolidays.co.uk** Or call us 24/7 on **002034 688 722**





*Partridges*  
LONDON

## World Chelsea Bun Awards Raises £30,000 for Children's Charity

**P**artridges, the famous Chelsea grocer, celebrated its 52nd birthday in May and announced that it has raised over £30,000 from its World Chelsea Bun Awards.

The money has been donated to **The Children's Surgery Foundation** charity with the aim of supplying vital equipment to the children's department of a London hospital.

The World Chelsea Bun Awards was conceived by **John Shepherd, owner of Partridges**, 6 years ago, with the dual purpose of reviving interest in the baking of Chelsea Buns and raising money to support a children's charity. Partridges is widely regarded as the 'Home of the Chelsea Bun' in Chelsea.

Speaking after the announcement John said that he and the team at Partridges were delighted by the success of the competition and thanked the many amateur and professional bakers from around the world who submitted entries in person and on Instagram. He also thanked the **Royal Warrant Holders Association Charity Fund** for their very generous contribution of £6,000.

*"Sustainability is at the heart of everything we do at Partridges and our aim of creating a more sustainable future for Chelsea Buns runs alongside our work in creating the sustainable fine food market on the Duke of York Square with Cadogan as well as running our two fine food shops as sustainably as possible."*



The World's First Ever Giant Floral Chelsea Bun

### **Exclusively at Partridges**

Selling over 10,000 Fine Food & Drink Products. Partridges proudly supports the Great Taste Awards.

More than 1,000 Chelsea Buns were sold at Partridges in the week of the World Chelsea Bun Awards.

This year's 'Floral themed' competition was judged by Lady Frederick Windsor, also known as the actress Sophie Winkleman, and the actress and cake expert Jane Asher, both patrons of The Children's Surgery Foundation, and Munther Haddad, Charity Chairman and a Senior Consultant Paediatric and Neonatal Surgeon.



**Lady Frederick Windsor says,**  
*"The amazing interventions this foundation suggests and then funds to make sick children's lives less painful and harrowing is nothing short of inspirational."*



**Jane Asher says,**  
*"This wonderful charity is very close to my heart: it does so much to alleviate the potential pain*

*and distress involved when little ones have to go through the trauma of surgery. Baking some delicious Chelsea Buns is a delightful way of raising money."*

**Munther Haddad says,** "We are incredibly grateful to John Shepherd and his team at Partridges for their support and generosity since the inception of the World Chelsea Bun Awards in 2019. I was delighted to be asked to be a judge as I am rather partial to Chelsea buns."



John Shepherd, Owner of Partridges & Lady Frederick Windsor

Find out more at: [www.worldchelseabunawards.com](http://www.worldchelseabunawards.com)



Lady Frederick Windsor, Jane Asher & Munther Haddad

Illustration - Chelsea Bun Flower by Local Artist, Julia Page.

Chelsea Buns - Professional Live Tasting Competition Winner: Zena Chalnti with her Pink Blossom & White Chocolate Cranberry Floral Chelsea Buns.

[WWW.PARTRIDGES.CO.UK](http://WWW.PARTRIDGES.CO.UK)



E: [shop@partridges.co.uk](mailto:shop@partridges.co.uk) • T: 020 7730 0651 • On Deliveroo • Uber Eats



### WHY WAS NOW THE RIGHT TIME FOR BIRLEY CHOCOLATE TO OPEN?

Chocolate has always been a passion of ours and very popular at the clubs and bakery. Being on the floor in the bakery made me realise that a dedicated space for the chocolate and dedicated time for the customer was needed.

### HOW DOES IT WORK IN HARMONY WITH BIRLEY BAKERY?

It is working well I have to say; some people find it offers a calmer environment for their morning coffee. The lunch menu also makes a difference and complements what visitors can find on offer at the bakery: we finally have a few salads on the menu for example. Our customers have been asking me for that from



## AS BIRLEY LAUNCHES A CHOCOLATE SHOP AT 24 CALE STREET, WE MEET ITS EXECUTIVE HEAD OF BAKERY AND PASTRY, VINCENT ZANARDI

AS TOLD TO: CHARLOTTE PASHA

# *Something* SWEET



day one, so I'm glad to have the space to now offer that. It is both eat in and take away - I particularly like the ice cream hatch at the front of the shop for passersby.

### WHERE ARE YOUR INGREDIENTS FROM?

From wherever they are the best sourced. Our hazelnuts and pistachios are from Italy, the vanilla comes from Tahiti and there are seven different chocolate suppliers for our new range of bars, based all over the world. We also try to source ingredients from the UK as much as we can, as there are a lot of very good ingredients here.



# Food / Birley Chocolate

## WHAT MAKES A GREAT CHOCOLATE?


A great fruit, a great climate, great farmer, great roasting: there are no shortcuts for good quality. The whole process from the beginning until the end is very important.

## WHO IS YOUR CUSTOMER?

Everybody - we cater to all, including offering vegan chocolate.

## WHAT ARE SOME OF YOUR FAVOURITE OR BESTSELLING PIECES?

Our range of what we call the mendiants is very



popular and the boxes they come in make them so special, too. I am also completely addicted to our milk chocolate sables, with a glass of milk - divine!

## WHY IS CHELSEA THE RIGHT PLACE FOR BIRLEY CHOCOLATE?

The Green and the village feel is wonderful, as well as the environment of other fantastic shops and suppliers we have around us. I love shopping on the Green, all the stores have amazing produce.

## WHAT'S NEXT FOR BIRLEY CHOCOLATE?

We will have seasonal specialities - there will be a wide variety of produce for the festive season that we are looking forward to offering in-store and online with nationwide delivery.



## Fashion / News



EXCITINGLY, SELF-PORTRAIT has launched its first jewellery collection. "I wanted to create pieces that not only complement our clothing, but can also stand alone as unique statements," said Han Chong, founder and creative director. "Each jewellery piece celebrates the intricate details and designs that define Self-Portrait, in a form that can be worn every day and into the night." The brand's iconic bow motif features, of course, while heart motif earrings add a playful touch. Gold pearl droplets offer a fresh take on a classic style. From £95.

*11-13 Duke of York Square*

GOOD NEWS: the A/W fashion collections are here, and Brora is a one-stop shop to get you ready for the season. Layer up in its Fair Isle chunky knits and matching separates. 6 Symons Street

EXCITING NEWS FROM John Lewis: not only is the brand increasing its floor staff, it has promised a price freeze on all back to school essentials. So now is the perfect time to head to Peter Jones, for excellent service and everything you could possibly need to kick off the academic year, from pencil cases to fresh white shirts.



SWISS LUXURY WATCHMAKER Breitling has opened a store at 57 Brompton Road. Staying true to the brand's cool industrial aesthetic, the new shop, which spans two storeys, has a motorbike and pool table – customers are encouraged to have fun as well as shop.



THE SECOND DROP OF Reformation's collaboration with Laura Vassar, co-founder of Brock Collection, is here. Brock focuses on sustainable luxury, with sophisticated pieces made from archival deadstock fabrics and its signature sustainable fibres such as linen and Naia Renew satin, in modern feminine silhouettes. The embroidery and detailing are outstanding. From £240. 11 King's Road



THE LATEST POP UP at the Anya Hindmarch Village Hall is a chic stationers, in collaboration with the Japanese speciality stationers, Itoya, based in Tokyo and founded in 1904. Browse Itoya's beautiful pieces alongside Anya's new stationery collection: leather files, organisers, fun pencil cases and more, all designed to spark joy and organisation. There will be calligraphy and manga illustrations workshop on site too - see anyahindmarch.com for details. 16 Pont Street



SMYTHSON'S NEWEST COLLABORATION with London-based swimwear label Hunza G makes sense - both brands share a dedication to exceptional craftsmanship and a love of storytelling. Snap up the notebooks in pool-party hues - the brighter the better. £125. 141-142 Sloane Street

LUXURY TRAVEL SPECIALIST Explorations Company has partnered with British swimwear brand Love Brand & Co on a signature capsule collection, Which Way to the Tropics. The collection aims to raise awareness of the need to protect our oceans, while supporting marine conservation and research efforts in the Seychelles. Love Brand has pledged a minimum of £1,000 to the Seychelles Manta Ray Project this year. Snap up some trunks now for your next holiday. 5 Park Walk







### WELCOMING VERONICA BEARD

*Sloane Square is thrilled to add Veronica Beard to its roster of luxury fashion*

WELCOME VERONICA BEARD! The new store at 2 Symons Street carries the full lifestyle collection from the American womenswear brand, spanning outerwear, dresses, trousers, co-ords and more.

Known for a cool, chic aesthetic, Veronica Beard focuses on pieces that are easy to wear and designed to be layered. It's a one stop destination to build an easy, classic capsule wardrobe - think jeans with denim shirts, sharply tailored blazers and hard-working, smart-casual dresses.

The beautiful store has a charming English countryside interior with brass detailing, printed linen curtains and antique wooden tables - you'll want to sink into a squishy skirted armchair as

you browse the latest bags and footwear.

"Every Veronica Beard location is designed to feel like you've walked into our living room. Each item is individually sourced and hand-chosen to delight the customer and reflect the new space. We are so excited to meet our Sloane Square customer where she is," says co-founder Veronica Swanson Beard.

The suede ankle boots are on our wishlist, as is pretty much everything else.

See you there for all your A/W needs.





Your lawyers for business and life.

# Putting you at the heart of what we do.

At Cripps, we care about how our advice supports what really matters to you. Taking it personally from the outset, we're one dedicated, integrated team. By your side and backing your cause, we inform better decisions, manage risk and uncover new opportunities.

Your lawyers for business and life. Solving your problems and championing your ambitions to make a positive and lasting difference.

[cripps.co.uk](https://cripps.co.uk)







An icon of British style  
in the heart of Knightsbridge

[jumeirah.com](https://www.jumeirah.com)

**JUMEIRAH**  
CARLTON TOWER  
LONDON

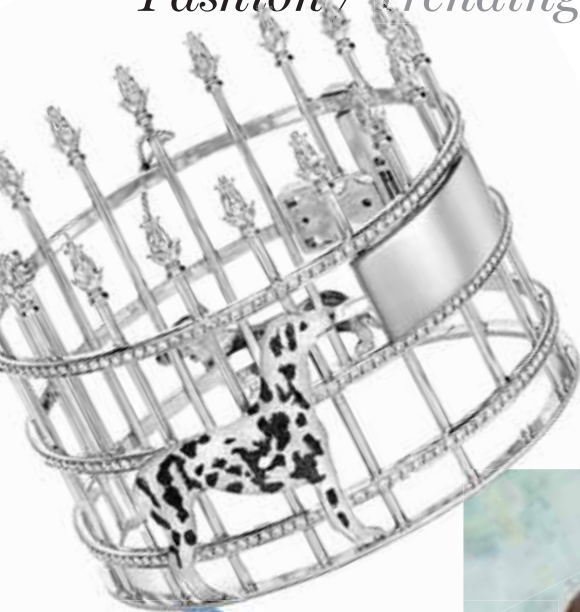
TOP  
DOG

FASHION FOR  
DOGS AND  
THEIR OWNERS

LOUIS VUITTON  
Dog leash, £305  
190-192 Sloane Street



## Fashion / Trending



### THEO FENNEL

Diamond set bangle,  
£35,200  
2 Garrison Square,  
Chelsea Barracks

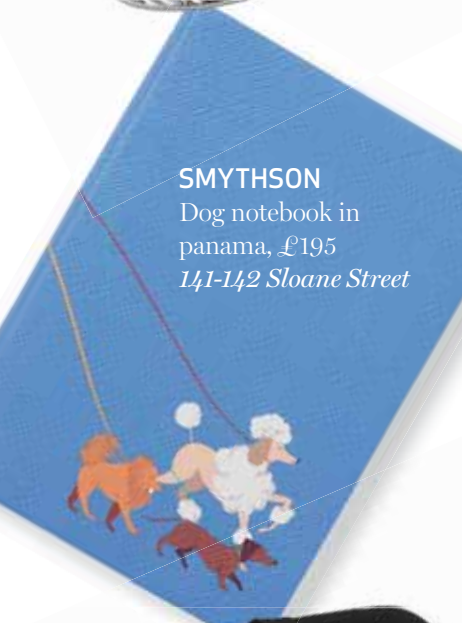


### ANYA HINDMARCH

Clip-on dog poo bag  
charm, £135  
157-158 Sloane Street

### SMYTHSON

Dog notebook in  
panama, £195  
141-142 Sloane Street



### FABLE

Pet portraits pyjamas, £75  
Available from the Natural History  
Museum Shop, Cromwell Road



### ANNOUSHKA

Diamond paw print  
charm, £5,500  
41 Cadogan Gardens



### BELLA FREUD

Lucian dog cashmere  
jumper, £575  
Available from Harrods,  
87-135 Brompton Road

### LOVE MY HUMAN

LMH tote bag, £12  
308 King's Road







**CHARLES TYRWHITT**  
Dog motif socks, £12.95  
*Available from Peter Jones,  
Sloane Square*



**RALPH LAUREN**  
Dog-embroidered  
polo shirt, £169  
*32-33 Sloane Square*

**LOUIS VUITTON**  
Dog on strap wearable  
wallet, £1,690,  
and Damier printed  
hooded anorak, £2,290  
*190-192 Sloane Street*



**EMMETT LONDON**  
Green dog print shirt, £195  
*380 King's Road*



**DIOR**  
Pet carrier bag, £2,600  
*196-198 Sloane Street*

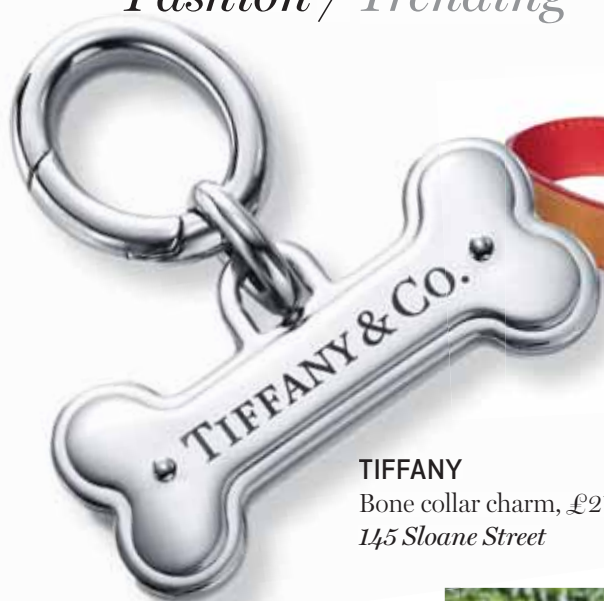


**LYLIE**  
Dachshund cufflinks, £150  
*1 Sparkes Cottages, Graham Terrace*





## Fashion / Trending



**TIFFANY**  
Bone collar charm, £215  
145 Sloane Street



**ASPINAL**  
Henley dog lead, £87.50  
Available from Harrods, 87-135 Brompton Road

**DAYLESFORD**  
Apple leather collar in green, from £76, and poo-bag holder, £45  
76-82 Sloane Avenue



**PET PAVILION**  
Knitwear in grey or blue, £39  
163 King's Road



**BRORA**  
Lambswool texture weave blanket in storm, £245  
6 Symons Street

**MUNGO & MAUD**  
Classic dog bed in charcoal, from £209.50, and Lettice the Lamb dog toy in vanilla, £26.90  
79 Elizabeth Street



**BURBERRY**  
Check dog lead, £270  
1 Sloane Street





# Open Mornings

We have limited spaces available for September 2024 entry.  
Visit us at one of our Open Mornings:

**Wednesday 25 September 2024 from 9.15am**

**Wednesday 20 November 2024 from 9.15am**

Tours are also available on a date that is convenient for you.  
Book your visit: [admissions@cameronvaleschool.com](mailto:admissions@cameronvaleschool.com)

**EXCELLENT**

in all areas  
- ISI Inspection, 2023



CAMERON VALE SCHOOL  
CHELSEA  
NURTURING SUCCESS





# In the DOGHOUSE

JENNY MATTHEWS IS THE DIRECTOR of Love My Human, a destination for dog lovers across the UK. Since opening in 2018, the brand has expanded to offer everything your pup could desire – from boutique grooming to birthday parties, and from doggy daycare to canine acupuncture.

I met Jenny for coffee in the Love My Human cafe: my cappuccino arrives dusted with a cocoa-powder dog, and our table is lit by a spaniel lamp (one of Jenny's hobbies is browsing markets for canine-themed antiques).

"I started this business because I became a dog mum and I saw so many gaps in the market" Jenny tells me.

"I wanted Love My Human to be really dog-first, and to hire people who have the same sort of mindset. We treat every dog that

MEET THE  
FOUNDER OF  
CHELSEA'S  
DOGGY  
DESTINATION,  
LOVE MY HUMAN  
WORDS: ALICE CAIRNS



comes through our doors as though they're our own, with dignity and kindness. We've gotten to know all the local dogs, which is lovely, and we also get visitors from further afield – from all over the UK."

One of Love My Human's most well-known offerings are its dog parties, catered by chefs and waiters, with a personalised, dog-friendly cake and access to a rooftop garden.

"It wasn't anything I intentionally devised, but people started asking to celebrate their dogs' birthdays with us" Jenny explains.

"We decided to roll with it, so now we offer a birthday package, and that includes members of staff serenading the dogs with 'Happy Birthday!' Dogs are so human sometimes – if you approach a group of dogs with a birthday

# *Business / Love My Human*

cupcake, I swear the birthday dog is the only one that will lock eyes on you. It's bizarre, it's like they know it's their birthday!"

But it's not all cupcakes and celebrations. Jenny is also passionate about canine health - inspired by her research into "the wellbeing of dogs at a microscopic level" which she undertook when her own dog was ill. She has sought out products which can help owners to manage common ailments such as pancreatitis, liver disease, blindness and heart conditions, and now stocks them in her store.

Alongside this, she hires her treatment rooms to holistic practitioners who offer a wide range of dog wellness services.

"When people are trying to improve their wellness, they have the option to try all kinds of approaches - aromatherapy, homoeopathy, massage therapy. Now, it's becoming more normal for dogs to have access to that as well" she explains.

"Some of our customers bring in dog psychiatrists and psychologists, and even clairvoyants to help them understand their dogs or connect with pets that have passed away. I'm always open to ideas, and I don't think anything is too crazy."

For your more day-to-day needs, Love My Human offers doggy day care in its soundproofed creche, complete with agility equipment, a sensory garden with dog-safe plants, a wide range of toys and a paddling pool for the summer months.

"We employ expert, Ofqual Level 3 qualified dog carers who will interact with the dogs: make sure they have down time, play with them, cuddle them, and walk them. It's all about enrichment" says Jenny. "What makes us really happy



is when they're reluctant to leave! We love it when they run straight past us because they're so excited to meet their doggy friends."

Because of its loyal customer-base and its flourishing online presence, Love My Human has become a destination for Chelsea newcomers seeking advice.

"When dog owners move to the area, they'll often come in here first to chat and to find out which trainers to visit, where to walk their dogs, which shops are dog friendly. We love to welcome new people - this is an amazing area for dog owners to live in, because so many local businesses are welcoming to dogs."

And if visitors want to linger for a cup of coffee or a meal, they can do so in Jenny's very own dog-friendly cafe.

"We worked with a dog nutritionist to form our dog menu so that you can have a grown up meal with your dog" Jenny says.

"It's lovely to walk in and find a dog owner sitting in the chair, with their dog in a high chair opposite them enjoying a meal together! Sometimes people come in here without a dog and ask if that's ok, because they just want to spend some time around dogs. We love that! If we can help people to appreciate how smart and intelligent dogs are, then we're happy."

*Love My Human, 308 King's Road, and Love My Human Townhouse, 330 King's Road*





## GAME, SET, MATCH

### **STRAWBERRIES AND SCREEN**

Duke of York Square hosted its annual Wimbledon viewing, with a big screen on the green showing the men's semi-finals as well as the men's and women's finals. Pop-up bars provided plenty of Pimm's and strawberries and cream, while on the Saturday, the Fine Food Market served up delicious tennis-inspired treats.



## Social / People



Amy Jackson with her *Living London* installation



Charlotte Colbert with *Tutti Frutti*



*Kids Go Wild* by Gillie and Marc

## ART IS EVERYWHERE

### KENSINGTON + CHELSEA ART WEEK

Artists and sculptors visited Chelsea as part of Kensington + Chelsea Art Week. This celebration of art in unexpected places saw works inspired by “changing landscapes” installed across the area. Whether it was a sculpture made from living moss or a bronze statue of zoo animals on an enormous tandem bike, there was something unusual around every corner.



Matthias Neumann with his recyclable sculpture *Xabana*



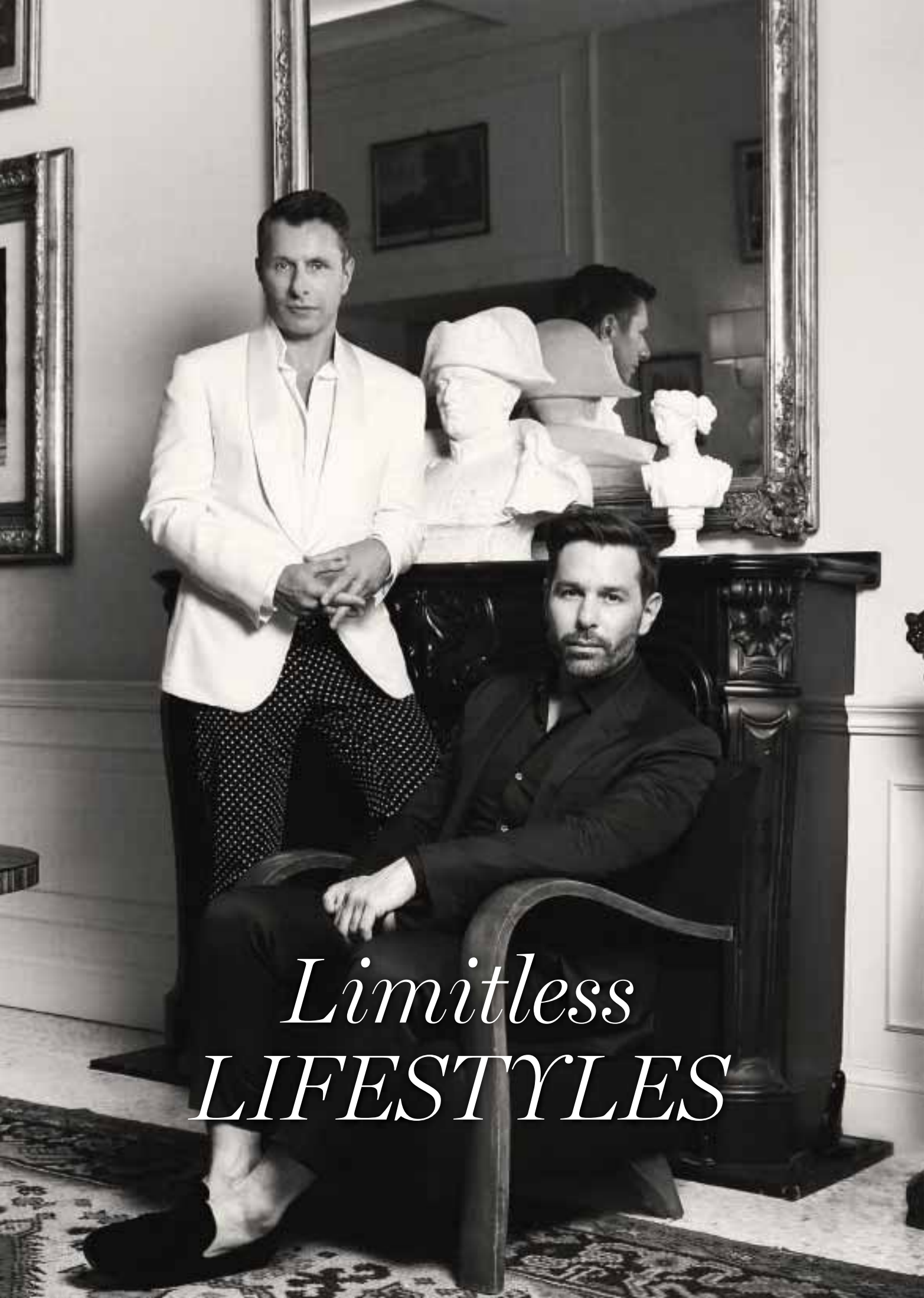
Tayshan Hayden-Smith with *Grow to Know*

Julian Wild with his sculpture *Salvia Corrupted*



Egor Zigura with his sculpture *Thinking*





*Limitless*  
**LIFESTYLES**

## WELCOME TO S2 LIFESTYLE

MANAGEMENT, an exclusive concierge and lifestyle membership service that operates around the globe.

Founders Goran Svilar and Ali Samli first met while working in the traditional luxury lifestyle arena in London. Now, their clients include fashion houses, celebrities and famous chefs to name a few, and Goran and Ali are based in Chelsea.

"We have lived in Chelsea for 18 years and have cherished every moment," says Goran. "As neither of us is originally from Britain, Chelsea provides an international community feel with a cosy, village-like atmosphere where we feel part of a community. We live on Cheyne Walk, and despite the occasional traffic noise, having the river right in front of our window makes everything more serene."

Ali continues: "We are fortunate to avoid long commutes and stay in the area all day. For coffee, we go to Hagen or Gail's for a chocolate babka, a daily necessity. Birley Bakery is another great spot for coffee or meetings, conveniently located for our fruit and vegetable shopping at Andreas."

"B Bagel is our favourite lunch spot unless we have a client meeting, in which case we recently discovered Josephine Bouchon on Fulham Road, or [we go to] At Sloane hotel. For dinner, we love Wild Tavern or Le Petit Beefbar, and if we don't feel like cooking, we get takeaway from Jak's on Walton Street."

Clients are looked after by an expert team 24 hours a day, 365 days a year, and no task is too big or too small. Daily tasks include sourcing dog walkers and babysitters, providing the right consultants for children's education, securing daily personal training sessions and dietitians with experts and booking appointments with well-known doctors, overseeing art procuring and collecting, event planning, household relocation and securing VIP nightlife entry.

"We can fulfil 99 per cent of requests," says Ali. "It's all about thinking, planning and having the right network. We have a fantastic team and a network of trusted individuals and companies we've worked with for years, while always looking for new suppliers."

"If we can't fulfil a request, we ensure the client is never left empty-handed by proposing alternative plans so they feel secure and well-supported."

As for wacky requests - "we could write a TV show with those, and it wouldn't be just one season!" says Goran. "A client realised just a couple of days before that his girlfriend's birthday was coming up. He had booked the hotel, but that was it. He knew she wanted a Birkin bag, which were even harder to come by at that time."

"This is where we came in. Long story short, we found the bag, but it was in Dubai. With time running out, we calculated that the only way to get it was to send one of our team members to Dubai on a private jet, which we did. We got the bag in Dubai, but on the way back, the client decided to

leave early for Paris. By the time we landed, the client was already on his way there. To make things more interesting, we couldn't get a slot for the jet to fly out on time, so we had to switch to a train.

"Meanwhile, no restaurant reservation had been made, so a last-minute call to chef Ducasse was needed to arrange a chef's

table. This was quite a feat, given it was a Friday night and the call was made at 6pm. But we pulled it off, and the bag arrived just in time for dinner. It ended up being a very expensive bag."

While some requests may be on the extreme side, there is broad demand for the service. "We've noticed an increased demand in London and internationally," says Ali. "It's becoming much more difficult to get things done or find someone to follow through on requests. Our clients rely on us because most of our team has been with us for a long time, fostering trust and loyalty. We handle many personal requests and life situations, making trust and consistency crucial."

As for what's next - "we are well-known in the UK, especially in London. We have an office in Switzerland and are now setting up a new location in Italy," says Ali. "We also have a sister company in Boston and summer offices in Ibiza, Mykonos and Forte dei Marmi. Our aim is to grow internationally and expand into the corporate world, without compromising our service quality."

Watch this space.

*s2london.com*

TIME POOR AND HAVE  
A TRICKY REQUEST?  
THIS CONCIERGE  
MEMBERSHIP  
SERVICE MAY BE  
FOR YOU  
WORDS: CHARLOTTE PASHA





ST LUKE'S IS  
CELEBRATING 200  
YEARS IN CHELSEA.  
BRIAN LEATHARD,  
RECTOR OF ST LUKE'S  
FOR THE PAST 19  
YEARS, TELLS US MORE  
WORDS: ALICE CAIRNS

IMAGE: DAVID LUFF

# The heart of Chelsea

# Community / St Luke's

ST LUKE'S WAS BUILT BETWEEN 1820 and 1824, at a time when Chelsea was growing very, very rapidly and Chelsea Old Church, down by the river, was deemed to be too small. This place must have seemed absolutely colossal when it was first built, with nothing else here except a few tiny cottages on Cale Street.

It was assumed that St Luke's would be built in what was then the most popular architectural tradition, a sort of classical style. But in fact, the architect, James Savage, built it in the neo-Gothic tradition, with flying buttresses and pointy arches. It's believed still to have the highest roof of any parish church in the country.

St Luke's is very much *the* parish church of Chelsea. From it, other churches were built and other little parishes were carved out as the population grew. Christ Church was actually built in 1839 as an offshoot from here, because the good citizens of Chelsea decided that they didn't really want to worship almighty God in the presence of their domestic servants.

Christ Church was therefore thrown up at less than 10 per cent of the cost of St Luke's. There would be a 10.30am service here, and the servants would be needed at home to see their masters and mistresses out. They would then hurry to Christ Church for a truncated service, which began at 11am, and they could be back in time to receive their masters and mistresses after their full service at St Luke's. Even today, services at St Luke's still start at 10.30am, and services at Christ Church still start at 11am.

We're very excited to be celebrating 200 years in Chelsea. There will be three strands to our celebrations: heritage, the environment and creating a fund for the future. We have a really dedicated group of about 30 people beaver away in the archives, pulling interesting things out: we now know lots about the arguments that took place between the architects and the builders during the church's construction, and we know the church was used as a watch point for bombing raids during the world wars.

This autumn we'll have banners placed down the pillars to communicate some of our findings, and we'll have a weekly changing exhibition at the back of the church with some of our archival documents.

Because we've been looking at heritage, we're also setting up a memory bank, which will combine people's own memories with findings from our archive. We're going to use that as part of a memory cafe, which we're hoping to run from autumn, as a way of uniting the community through memory and also to support those who have issues with memory loss and dementia.

For the environmental part of our celebrations, we're going to redevelop a piece of land at the back of the churchyard to create a fully accessible communal garden, with vegetation that has a fragrance and interesting textures, so that people with limited sight or olfactory facilities can enjoy the gardens, too.

Kids from local schools are decorating little stepping stones for us, which will be set into the ground to create a walkway. That project will start in October, and will be completed the following year.

In other news, we're in the process of organising a writing festival with Christ Church school and the Chelsea Academy, collaborating with local authors to inspire the children. We run a three-week summer programme for 85 local children, mixing kids from our own school with kids from the estates. We also run an isolated elders coffee group every Wednesday morning, and we run a food bank every Tuesday, which is used by between 50 and 70 families each week.

This is a really busy church, but for all the right reasons. It feels solidly rooted here, and lots of things happen around it – almost like it's the still centre of Chelsea. On sunny days, the gardens are so full that you can hardly see the grass.

We are really looking forward to our celebrations and want to open them up to as many people as possible.

October 18 is St Luke's Day, so on October 20, the nearest Sunday, we'll be celebrating our 200 years with a reception after the service, and the Bishop of Salisbury is coming to preach.

But whether you attend our services, or use our football pitches, or come along to one of our community events, we want you to be part of this celebration of our two centuries in Chelsea. We hope to see you there.  
*St Luke's Church, Sydney Street, [chelseaparish.org](http://chelseaparish.org)*



"WE ARE REALLY  
LOOKING  
FORWARD  
TO OUR  
CELEBRATIONS  
AND WANT TO  
OPEN THEM UP  
TO AS MANY  
PEOPLE AS  
POSSIBLE"



# Community



## NOMINATE YOUR LOCAL FAVOURITES FOR A CHELSEA AWARD

### HAVE YOU MADE YOUR NOMINATIONS FOR THE 2024 CHELSEA AWARDS?

The awards are created and supported by Cadogan and *Sloane Square* magazine and we believe that there's nowhere else quite like Chelsea. It's a unique part of London, with its own distinct character and history – and it's so crammed full of shops, restaurants and places to visit that even residents who've been here for decades probably still have plenty left on their local 'to do' list.



That's why we love the Chelsea Awards, the community awards which give you the chance to celebrate the people, businesses and institutions which make Chelsea so special. Receiving your nominations is always an exciting time – we're lucky enough to read heartfelt stories about caring individuals, hidden gems and local favourites, and we always end up with plenty of new spots to try and new local initiatives to support. As the award ceremony approaches



(it'll take place on October 17 at the Royal Hospital), we're eager to receive as many nominations as possible. Nominating someone for an award is easy - you simply visit [chelseaawards.com](http://chelseaawards.com), select 'make your nomination', and fill in a short form listing what you love about your nominee and which award you believe they should win. Each and every nomination will be read by our panel of judges - composed of eminent Chelsea locals - before a decision is made about who the worthy winner will be.

So why should you nominate your favourites for a Chelsea Award? We believe that making a nomination is a great way to give back to the unsung heroes of Chelsea. So many local people, businesses and charities work tirelessly for the community, whether that's by running a local choir, volunteering to help their neighbours, or simply by providing the best cup of coffee in town. Receiving an award gives them recognition for that hard work, as well as a chance to celebrate their achievements with their colleagues and neighbours.

As ever, there is nowhere too big or too small to be worthy of a Chelsea Award. We love to recognise Chelsea's powerhouses - the world famous galleries, museums, brands and celebrity residents which make this corner of London such a destination. At the

*"AS EVER,  
THERE IS  
NOWHERE  
TOO BIG OR  
TOO SMALL  
TO BE  
WORTHY  
OF A  
CHELSEA  
AWARD..."*

same time, we're always looking to celebrate smaller businesses and unsung individuals - from your community-minded next-door neighbour to your favourite independent shop. Part of Chelsea's unique character comes from its eclectic blend of shops, restaurants and venues, so don't hesitate to nominate anywhere based on size.

There are seven awards up for grabs, each focusing on a different area of local excellence. Only in Chelsea is the award for businesses that are unique to the area, while





# Community



community hero recognises someone who has benefited the local community with their hard work. Cultural Champion is awarded to organisations that contribute to Chelsea's rich cultural offering, and In Good Taste is for your favourite foodie destinations. The Community Collaboration award goes to Chelsea businesses which have collaborated to create something new for the area, and Master of Craft is given to true artisans who have perfected their craft. Finally, the Future Forward award looks to the future by recognising those businesses which have innovated

to meet new challenges – perhaps by championing sustainability or by developing an exciting new product.

So don't forget to make your nominations and give back to your community. It's your chance to champion your local area, to raise the profile of your favourite people and places, and to celebrate everything you love about Chelsea. We can't wait to discover new destinations and to reward the work of the people who work tirelessly to build our thriving community.



[Chelseaawards.com](http://Chelseaawards.com)



## THANK YOU TO OUR SPONSORS



**The Chelsea Awards are created and supported by Cadogan and Sloane Square magazine.**

### ONLY IN CHELSEA

Businesses that bring something unique to the area

### COMMUNITY HERO

An organisation or person that has benefited the community through their actions

### CULTURAL CHAMPION

An organisation that has enriched Chelsea's culture and raised the area's profile

### IN GOOD TASTE

Someone who has made Chelsea more delicious

### COMMUNITY COLLABORATION

Businesses that have joined forces for the greater good

### MASTER OF CRAFT

An artisan who elevates the everyday to the extraordinary

### FUTURE FORWARD

A company that is innovating to meet tomorrow's challenges. That could be sustainability, experiential retail or something quite different



Hampden & Co.  
BANKERS

---

We treat all our  
clients the same.  
Differently.

---



Hampden & Co is unlike other banks. We are a bank that knows you as a person, not as an account number. We take the time to have proper conversations, to understand you and the full picture of your finances, so we can tailor our services to meet your needs. To find out what it feels like to be looked after by your bank, please contact Mark.

**Mark Plummer**

Head of Private Banking, London

020 3819 5685

[mark.plummer@hampdenandco.com](mailto:mark.plummer@hampdenandco.com)

**[hampdenandco.com](https://hampdenandco.com)**

Banking - Lending - Deposits

Hampden & Co plc Registered office 9 Charlotte Square, Edinburgh EH2 4DR  
Registered in Scotland No SC386922 Authorised by the Prudential Regulation Authority  
and regulated by the Financial Conduct Authority and the Prudential Regulation Authority

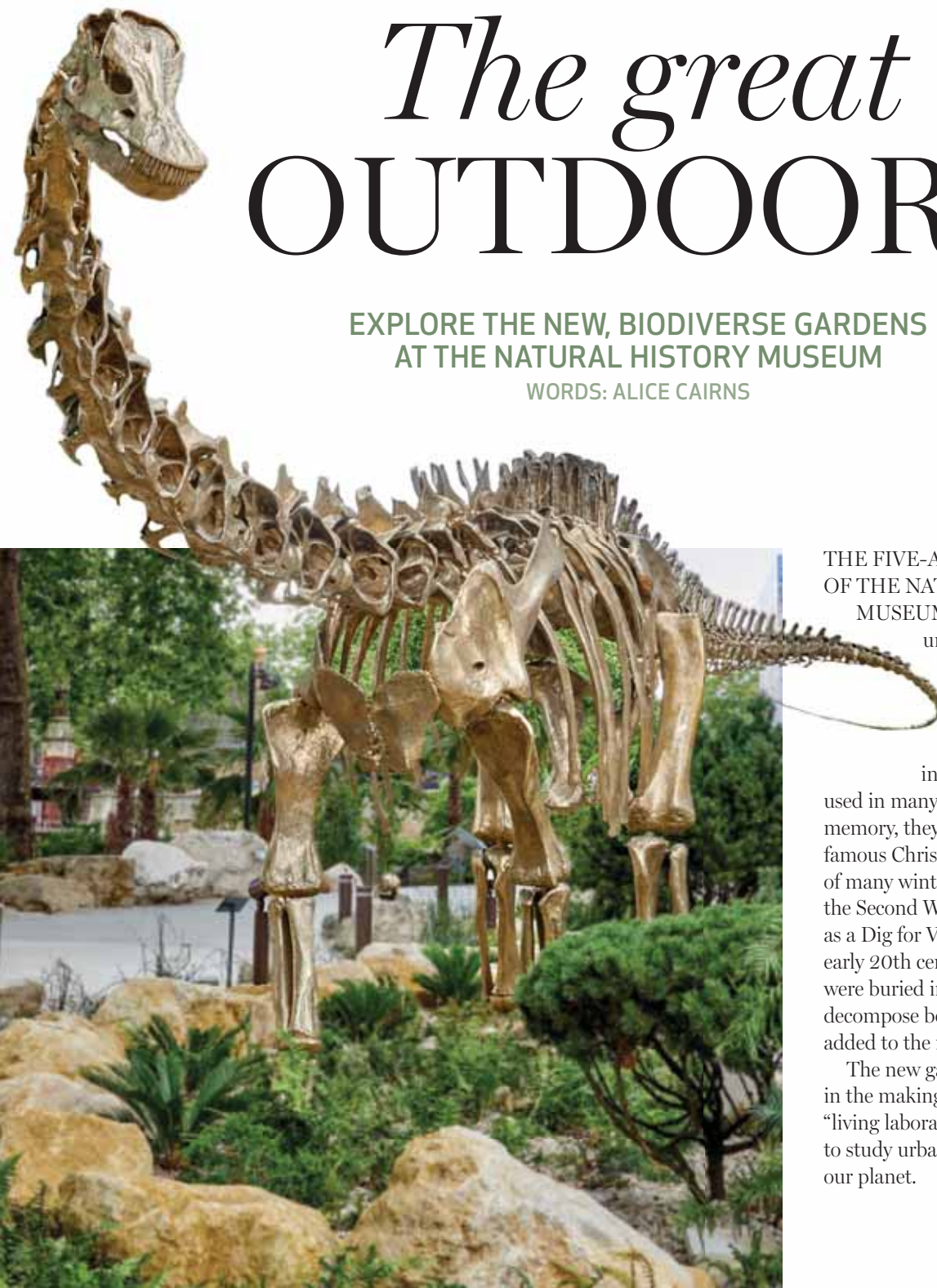




# *The great* OUTDOORS

EXPLORE THE NEW, BIODIVERSE GARDENS  
AT THE NATURAL HISTORY MUSEUM

WORDS: ALICE CAIRNS



## THE FIVE-ACRE GROUNDS OF THE NATURAL HISTORY

MUSEUM have reopened after undergoing a £25 million transformation.

The museum has had gardens since it opened its doors in 1881, but they've been used in many different ways. In recent memory, they were the setting for the famous Christmas ice rink – a staple of many winter calendars, and during the Second World War, they were used as a Dig for Victory garden. In the early 20th century, whale carcasses were buried in the gardens and left to decompose before the skeletons were added to the museum's collection.

The new gardens were five years in the making, and will be used as a “living laboratory” to help scientists to study urban wildlife and safeguard our planet.

TOP LEFT: SENSORS IN THE GARDENS  
TOP RIGHT: POND LANDSCAPE  
LEFT: FERN AND THE JURASSIC GARDEN, SUPPORTED BY THE KUSUMA TRUST

# Sustainability / Museum

## 1. JURASSIC PARK

The new gardens contain the first ever life-size (22-metre long) bronze cast of a dinosaur skeleton. A team of engineers, architects and 3D modellers puzzled over how to install Fern the diplodocus with no visible supports, eventually hollowing each bone and adding internal scaffolding. Fern is also more anatomically correct than the museum's iconic Dippy – scientists had the chance to correct some mistakes, including upside down bones!

## 2. ANCIENT ROCKS

Step into the Evolution Garden and you'll find yourself in a canyon lined with 2.7 billion-year-old rock from Scotland – the oldest in the UK. As you follow a winding path, you'll be able to touch 26 types of rock from different periods of geological time, creating a walkable timeline in which each metre transports you five million years through the history of our planet.

## 3. LISTENING IN

The gardens will be closely monitored by scientists in order to better understand and protect urban nature. As part of this process, the museum is experimenting with acoustic monitoring, which involves placing recording devices into soil, plants, ponds and even inside trees to monitor activity levels. The network of sensors is expected to record 20 terabytes of audio data – from the buzzing of insect wings to the calls of birds



## 4. COMMUNITY PLANTING

Many of the plants in the gardens were chosen by members of the local community over a series of workshops, during which participants shared memories associated with each plant.

Sunflowers were planted because one local remembered deshelling sunflower seeds with her aunt, lantana because of the smell the flowers release when crushed in your palm, and mint because a cherished grandfather used to drink fresh mint tea every day.

## 5. FOSSIL PAVEMENT

Look closely at the paving stones and you may notice intricate

ammonite fossils. These were rescued by the Lyme Regis Museum and show cross-sections of an ancient fossilised seabed.

## 6. NEW DEPTHS

The museum's pond has been expanded by 60 per cent, and now features an accessible sunken path wide enough for two wheelchairs. Frogs, newts, dragonflies and mandarin ducks have already been spotted making the pond their home, and the island is perfect for wetland birds such as coots and moorhens. In the process of expanding the pond, scientists discovered a previously unrecorded species of stonewort.

If you'd like to visit the new gardens, the museum is running guided tours as well as family activities such as pond-dipping, arts and crafts and even outdoor silent discos.

*Natural History Museum,  
Cromwell Road*



## DISCOVER SIX FUN FACTS ABOUT THIS GREEN OASIS...



## Going green

### LOOKING TO BE MORE SUSTAINABLE? THESE ARE THE RECYCLING SCHEMES YOU NEED TO KNOW ABOUT

WORDS: ALICE CAIRNS

**OCTOBER 14-20 IS RECYCLE WEEK**, a nationwide celebration of recycling. Plenty of Chelsea's shops offer innovative recycling programmes which will ensure that your used products don't go to waste – check out some of the best:

**SPACE NK:** Grab a collection bag next time you visit the Chelsea store and fill it with your makeup and beauty empties. When it's full, drop it in the designated in-store bin - it'll be used to make a range of beautiful accessories including hairbrushes and handheld mirrors.

27 Duke of York Square

**BOOTS:** If you have a beauty, health, wellness or dental item that's hard to recycle, you can bring it into Boots (no matter what brand it is or where you bought it). You'll need to download the app, scan your products and then bring them into the store. For every five empties and £10 spend you'll receive 500 points on your advantage card.

60 King's Road

**PETER JONES:** The 'Beauty-cycle' and 'Fashion-cycle' schemes mean that if you bring back 5 empty beauty products or fashion items to be recycled, you'll receive £5 off your next purchase of £20 or more. If you have a Barbour jacket, you can also have it repaired and re-waxed instore.

Sloane Square

**MARKS & SPENCER:** Kids grow fast, which

is why M&S developed its school uniform "shwopping" scheme. Donate any M&S school uniform items to Oxfam and you'll receive 20% off kids' daywear.

85 King's Road

**ZARA:** Simply book a home collection online, and a courier will be with you within 24 hours to pick up your unwanted clothes (there's a £1.95 cost for this service). They'll then be sorted for donation, second-hand sale or recycling, depending on their quality.

Duke of York Square

**H&M:** Bring any unwanted items - whatever their condition - into store and you'll receive a thank you coupon to put towards your next purchase.

72 King's Road

And what about reusable products?

**SPRUCE** is a sustainable cleaning company run by a Chelsea resident. Your products will come in reusable aluminium bottles and refills are supplied in plastic-free packaging.

[wearespruce.co](http://wearespruce.co)

**MY WARDROBE HQ** is a fashion rental company, run by a Chelsea resident with a pop-up in Harrods. There are more than 500 designer pieces available to rent, and after each wear they receive an environmentally friendly clean.

[Mywardrobehq.com](http://Mywardrobehq.com)

**RIXO** offers expert alteration and repair vintage items and RIXO garments in the 114-116 King's Road store. Garment expert Liudmylah Kirk oversees the service, which starts at £25.





# KNIGHTSBRIDGE SCHOOL

Day | 3-16 | Co-educational



Book a tour  
and find out more  
in our prospectus

Pupils of all ages  
achieve high academic  
standards

**ISI 2023**





# Transforming

## HOW A LOCAL COACHING AND STYLING PROGRAMME IS EMPOWERING SINGLE MOTHERS TO SECURE EMPLOYMENT

# LIVES

In response to research revealing that women face more barriers to employment than their male counterparts, with mothers spending up to three years securing meaningful work, the Kensington + Chelsea Foundation has stepped up to make a difference.

They fund a coaching and dressing programme designed to empower unemployed women, helping them secure sustainable and fulfilling employment.

As part of their Skills and Employment portfolio, the Kensington + Chelsea Foundation is investing in supporting more residents like Sammy\* into sustainable, and meaningful employment.

Sammy is a lone parent, living in Kensington + Chelsea, who had been out of work for over a year and was dedicating more than 21 hours a week to applying for jobs. By attending an 'Interview Preparation and Dressing' appointment funded by the Kensington + Chelsea Foundation, Sammy worked with a dedicated coach to update her CV, develop her interview skills,

and had the opportunity to ask questions and gain feedback on her answers.

A lack of constructive feedback from her unsuccessful applications, was hindering Sammy in her job search as she could not see why she was not being

shortlisted for interviews. At her coaching appointment, Sammy was taught to tailor her application to what prospective employers were looking for. At the dressing appointment, her personal dresser worked with her to find an interview-appropriate outfit that Sammy felt her best in.

Shortly after her initial appointment, Sammy was offered the role of a Customer Service Advisor and was thrilled to be starting work. She was welcomed back for a second appointment where she was able to build a capsule wardrobe to see her through the first few weeks of her

new role. All of the clothes and accessories Sammy received, were hers to keep.

The Kensington + Chelsea Foundation relies on the generosity of local residents and businesses to ensure that everyone in Kensington + Chelsea, can live a happy, healthy and fulfilled life. Please donate today or visit our website to find out more.

\*Sammy's identity has been changed to protect confidentiality.



*Ask the Dentist...*

# HOW TO SPOT SIGNS OF ORAL CANCER

*by Dr Fatima Rashid*

WHEN YOU VISIT THE DENTIST for a dental examination, the dentist does more than just check for cavities. They also screen for signs of oral cancer.

Oral cancer typically appears as a sore, lump, or growth in the mouth that doesn't heal. It can manifest in various forms, such as:

- **Persistent sores:** A sore or ulcer in the mouth that doesn't heal within a few weeks.
- **Red or white patches:** Unusual red or white patches on the gums, tongue, tonsil, or lining of the mouth.
- **Unexplained bleeding:** Unexplained bleeding in the mouth.
- **Difficulty swallowing:** Feeling as though something is caught in the throat, making swallowing difficult or painful.
- **Numbness:** Unexplained numbness in any area of the face, mouth, or neck.
- **Lump in the neck:** A lump or swelling in the neck area, often indicative of spreading cancer.

Early detection of oral cancer is crucial, and regular dental check-ups play a significant role

in identifying these signs before they progress. If your dentist notices anything unusual, they may recommend a biopsy or refer you to a specialist for further evaluation.

If you notice any changes it is important not to over worry but please consult your dentist for more advice!

## About Dr Fatima

Dr. Fatima is a British-qualified dentist with ten years of experience based in Sloane Square at Chelsea House Dental. With a decade of practice, she possesses extensive knowledge and expertise in various dental procedures, including general dentistry, cosmetic dentistry including orthodontics and smile makeovers.



**For more on Dr. Fatima's and tips and tricks related to dentistry visit:**

**IG @teeth\_by\_drfatima**

**Youtube:**

**@drfatimalondon**

**Website:**

**[www.drfatima.co.uk](http://www.drfatima.co.uk)**



## Beauty / News



VITA HAS LAUNCHED a new combination offer of a steam, blow-dry and red light therapy at its head spa for £170. It's good value, super-relaxing and beneficial for the scalp, too – what's not to love?  
31 Sloane Square

NEW FROM Dermalogica is the Biolumin-C Night Restore, £96. Unlike many other vitamin C products, this is an overnight rather than daily serum. The inclusion of pro-vitamin D complex in the formula promotes recovery and restoration, helping to repair the skin's moisture barrier during sleep while providing long-lasting brightness and immediate hydration.

37 Duke of York Square



IF YOU'RE IN THE market for a perfume, snap up Aesop's new Virêre eau de parfum, £115. It'll take you right back to the Mediterranean, with key notes of bergamot, fig and green tea. The brand's long-term fragrance collaborator, Barnabé Fillion, says he drew on holiday memories to create the perfume: "Each time I think about the fragrance, I see myself in this moment, or during times spent cycling on little roads lined with fragrant trees that perfume the air."

22-24 Duke of York Square



JO MALONE LONDON has partnered with everyone's favourite bear, Paddington, on a limited-edition collection with a cologne that celebrates Paddington's favourite snack, marmalade sandwiches. A refined take on the most British of preserves, Orange Marmalade blends warm woods with orange zest to create a marvellous, golden fragrance. 30ml for £58.  
150 Sloane Street



IMAGE: P&CO LTD 2024



RICHARD WARD HAS launched the very special My New Hair service. Two of its directors, Robert Gibbs and Mario Charalambous, have had specialist training from Macmillan cancer nurses on how to cut and style wigs for chemo patients, providing a compassionate and respectful experience. The service begins with a private consultation before Mario and Robert transform an obvious wig into "my new hair", making it look and feel incredibly natural. Starting at £155, the service is designed to be accessible, with £30 redeemable against any products purchased.  
82 Duke of York Square



**PRO-EFFECT  
ULTIMATE EYE CREAM**

LISA FRANKLIN HAS launched a new eye cream, jam-packed with actives that fight against the effects of stress and inflammation, such as dark circles, puffiness and redness under the eyes. A hero ingredient in the Ultimate Eye Cream is polyglutamic acid: it's even more hydrating than hyaluronic acid. £95.  
251 Brompton Road

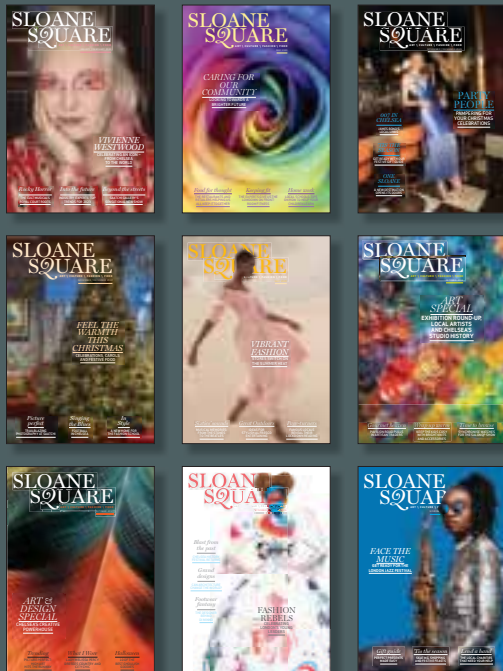
**BAMFORD HAS** THREE new B Vibrant launches: a body scrub, oil and treatment. The Tonifying Body Polish is 99 per cent natural and has been created with upcycled Daylesford coffee grounds. Follow up with the Tonifying Body Oil, scented with an energetic blend of ginger, spearmint and clove bud; and the 90-minute B Vibrant treatment, which includes skin brushing, exfoliation and a massage sequence using cupping therapy to detoxify and support the digestive system. From £45.

104 Draycott Avenue

SALON SLOANE IS working wonders with the new Sisley-Paris Fortifying Densifying shampoo treatment, which works to revitalise and regenerate the scalp for stronger, healthier hair. It boosts hair youthfulness and density while energising the scalp, making the hair fibre thicker and stronger. When used alongside the brand's Revitalising Fortifying serum, it's the secret to younger-looking hair. Do request it at your next visit.  
186 Pavilion Road



# KEEP IN THE KNOW



We know that these days you might not be in the area every day – or you may just visit us occasionally – but you still want to keep up-to-date with what’s happening locally

So why not sign up to receive the digital edition of Sloane Square and we’ll send you the latest edition as it is published

That’s it. You will receive no other emails or marketing material

To start the service simply visit [pubbiz.com/subscribe](https://pubbiz.com/subscribe)



## EXPERIENCE THE FUTURE OF PERSONALISED CARE



33 Grosvenor Place | 020 3423 7500

### Your health is everything.

That’s why we designed a hospital with the highest quality of care, right here in Belgravia. With exceptional patient-first support and convenient self-pay services, we’re setting a whole new standard for personalised, private healthcare — one of the many reasons we were awarded “Hospital of the Year” by LaingBuisson in 2023. From quick access to London’s leading health experts to state-of-the-art treatments, we’re here to help you heal.

Discover our care at [ClevelandClinicLondon.uk](https://ClevelandClinicLondon.uk)

FOR EVERY CARE  
IN THE WORLD





# My Chelsea / Dan McCaskie

## AS MANY OF AURIENS' RESIDENTS HAVE DEEP KNOWLEDGE OF THE AREA, DO THEY HELP YOU BUILD A LIBRARY OF RECOMMENDATIONS?

Many residents have deep ties to the arts and creative industries and offer invaluable recommendations. For instance, one resident informed me about the opening of Le Deli Robuchon on King's Road before it was public knowledge, thanks to their longstanding relationship with a member of the Robuchon family.

## WHAT ARE THE HIDDEN GEMS IN THE AREA THAT YOU RECOMMEND?

The team at St Luke's, led by Father Brian, are wonderful, and the cafe is an underrated spot for a hearty breakfast. The church grounds are also undergoing a beautiful transformation with input from our residents,



DAN MCCASKIE IS THE HEAD OF CONCIERGE AND GUEST SERVICES AT AURIENS CHELSEA. HE SHARES HIS FAVOURITE LOCAL SPOTS

AS TOLD TO: ALICE CAIRNS



including new plantings and improved accessibility.

At Jago on Elystan Street, the conversation is as good as the products. It is known for its friendly service, quality meats and for having the best eggs in Chelsea. Plus, it sells eggs individually, so I was quite confused the first time a resident asked me to run over and get four eggs – I always thought it was a dozen or half dozen!

I've also taken some of our residents on a boys' night out to our Dovehouse Street neighbour, Le Colombier.



It is a Chelsea institution, the food and atmosphere are impeccable and it's a firm favourite among our residents.

## ANY SUGGESTIONS FOR A STROLL AWAY FROM THE MAIN STREETS OF CHELSEA?

A walk down Oakley Street reveals charming houses with beautiful gardens, reminiscent of my native Cornwall's lanes. I always think Cheyne Walk offers a scenic riverside path with stunning views, especially at night when the bridges are lit up. But London often requires a fresh perspective – as our chauffeur, Neil, always reminds me, "Look up!"

## WHAT ELSE WOULD YOU RECOMMEND LOCALLY?

Ice cream is my indulgence. The Ice Cream Union serves incredible flavours – the pistachio is so good. For a quick pick-me-up, I love Casa Manolo's jamón ibérico sandwich. The crispy, delicious bread is a treat, and it's a favourite for both me and my Spanish wife. Also, the girls at White Coco are exceptional. Their attention to detail and customer service reflect the values we uphold at Aurien's. *2 Dovehouse Street, [auriens.com](http://auriens.com)*



# HOMMAGE

Celebrating Modern Art Masters:  
Posters and Lithographs Exhibition

5th - 18th September '24  
340 Kings Road, SW10

@hommage\_art  
www.hommage-art.com

Henri Matisse  
Marc Chagall  
Pablo Picasso  
André Masson  
Damien Hirst  
Fernand Léger  
Jean Bazaine  
Max Ernst  
Hans Arp  
Emmanuel Bellini  
David Hockney  
and more...

Alongside Contemporary Artist  
VENETIA SYMS





Did someone say cocktails?  
Discover Kensington's  
best kept secret, The K Bar

THE KENSINGTON

THE DOYLE COLLECTION • LONDON

Book now at [doylecollection.com/kensington](https://doylecollection.com/kensington)