

SLOANE SQUAD

ART & FOOD
OCTOBER 2025

DRESS TO IMPRESS

THE BEST FESTIVE FASHION

Person of note

THE SMOOTH AND
SMOKY JAZZ OF
STELLA COLE

Great gifts

PERFECT PRESENTS
FOR FAMILY AND
FRIENDS

Local heroes

CELEBRATING THOSE
WHO MAKE THE AREA
SPECIAL



Cartier

143-144 Sloane Street
London SW1X 9BL



CASSANDRA GOAD

FEATHER PLUME



40 YEARS OF DESIGN AND HERITAGE CRAFTSMANSHIP



More than a move

Est.1646

Pickfords Gold sets a higher standard for both domestic and international moving in and around the heart of London, offering a comprehensive range of services to ensure a seamless transition to your new home.

From meticulous packing of your belongings to specialised handling of antiques, fine art and high-value items, our expertise caters to the unique needs of discerning homeowners.

Our dedicated on-site move executive acts as your personal representative throughout the process, overseeing every detail to provide peace of mind.

Additionally, our white glove home makers service goes beyond the move itself, offering bed-making, kitchen setup and wardrobe organisation to make your new house feel like home.

Fully bespoke and tailored to suit owners of homes of distinction, Pickfords Gold ensures that every aspect of your move is handled with the utmost care and professionalism.

Contact Pickfords Gold:

0203 188 2544

gold@pickfords.com

www.pickfords.co.uk/gold

Pickfords *Gold*

Contents / November - December 2025

46

10 CALENDAR

Dates for your diary this winter

20 NEWS

All the latest news from Chelsea

26 MUSIC

Jazz singer Stella Cole discusses the draw of old Hollywood

28 CHRISTMAS GIFT GUIDE

Buy your Christmas presents from local boutiques

34 FOOD NEWS

What to eat and drink this month

38 THE TRAFALGAR

Meet the newest pub on the King's Road



66

40 ART NEWS

November's must-see exhibitions

44 ART

Wes Anderson's wonderful world

46 ART

Saatchi Gallery celebrates 40 years



28

34



78



COVER

Rixo,
114-116 King's Road
Page 59

Contents

48 CULTURE

A look at novelist Jane Austen's local links, 250 years after her birth

50 INTERIORS

Experts share their tips on how to dress your home for Christmas

54 FASHION NEWS

Get your fashion fix at the latest stores opening locally

59 TRENDING

'Tis the season for glitter and sparkle

66 CHELSEA AWARDS

The winners of this year's awards are revealed

74 SOCIAL

Celebrating the inaugural Chelsea Arts Festival



76 CHARITY

Can you help a neighbour in need this Christmas?

78 BEAUTY NEWS

Pamper yourself with the latest beauty buys and treatments

82 MY CHELSEA

Walpole's Helen Brocklebank on her Chelsea destinations

44

14

SLOANE SQUARE

is produced for Cadogan by

Publishing Business

3 Queen Street,
Mayfair, London
W1J 5PA
020 7259 1053

Cadogan

10 Duke of York
Square, London
SW3 4LY
cadogan.co.uk

Editor

Alice Cairns
020 7259 1058
alice@pubbiz.com

Writers

Sophia Charalambous
Will Moffitt

Subeditor

Kate White

Designer

Katie Stafford

Advertisements

Bridget Rodricks
020 7259 1059
bridget@pubbiz.com

Richard Taylor

020 7259 1051
richard@pubbiz.com

Publisher

Adrian Day
020 7259 1053
adrian@pubbiz.com



This product is made of material from well-managed FSC®-certified forests and from recycled materials.

All inks vegetable based. Our printers are certified to ISO 14001 Environmental Management.

This magazine is fully recyclable, when you have finished reading it please put it in your paper recycling bin.



Publishing Business is a member of the Professional Publishers Association and observes the PPA Code of Publishing Practice.



@SloaneSquareMag
@DOYSQ
@SloaneStreetSW1
@Pavilion_road



@SloaneStreetSW1
@PavilionRoad
@dukeofyorksquare
@SloaneSquareMag
@Kingsroad.london

ercol



Chelsea store now open.

Unit 5-6, 555 Kings Road, London, SW6 2EB.
020 7112 4943 ercolchelsea.com

Calendar



DECEMBER 31
NEW YEAR'S EVE PARTY
Celebrate New Year's Eve like it's the Jazz Age with this Gatsby themed party at Bluebird Chelsea. There will be flowing champagne, live music, a resident DJ, plenty of dancing and finally a countdown to midnight as we welcome 2026 in style.
Bluebird Chelsea, 350 King's Road

Events.
NOVEMBER & DECEMBER
diary



NOVEMBER 6 – DECEMBER 13
PORN PLAY
A promising young academic sees her career unravel as her addiction to violent pornography takes over her life. Starring Ambika Mod (*One Day, This is Going to Hurt*), this funny and unsettling play explores the dark side of desire.
Royal Court Theatre, Sloane Square

NOVEMBER 26 – DECEMBER 28
CHELSEA WINTER VILLAGE
Enjoy an immersive winter experience full of twinkling lights, large-scale artworks and festive entertainment. Follow a 1.5km light trail through the grounds of the Royal Hospital, then arrive at a Christmas village with market stalls, a bandstand, mulled wine, festive food and traditional fairground rides. This year there will also be curling provided by the Curling Club.
To book, visit chelseawintervillage.com
Royal Hospital Road



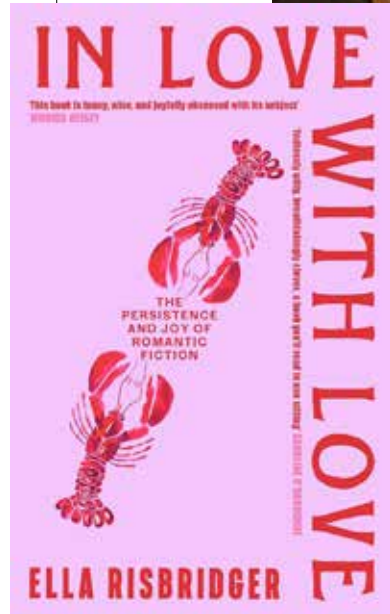
DECEMBER 6
PINECONE WREATH MAKING
Use pinecones and other seasonal materials to create a beautiful wreath. You'll sip on mulled wine while an expert shares their tips and tricks, helping you to perfect your festive masterpiece. Your wreath will be reusable year after year, and can be adapted by adding new natural materials.
Chelsea Physic Garden, 66 Royal Hospital Road



DECEMBER 7
JINGLE BELL JIVE
Dance your way back to the 1940s with an evening of seasonal swing at the National Army Museum. The team from SwingdanceUK will guide you through retro routines from the lindy hop to the jitterbug, accompanied by live music from the South London Jazz Orchestra and cabaret from The Diamond Girls. If you'd like to look the part, hair and makeup artists from Pretty Me Vintage will be on hand to transform you into a vintage vixen.
Royal Hospital Road



NOVEMBER 21 AND DECEMBER 5
HOME DESIGN MASTERCLASS
The Peter Jones team will lead a masterclass on festive decor, from doorscaping (creating a grand entrance with bows and wreaths) to table dressing. You'll learn how to get the most out of your baubles, how to pick out the perfect Christmas garland and how to dress fireplaces and staircases with festive flair.
Sloane Square



NOVEMBER 22 AND 23

CHELSEA BARRACKS WINTER FAIR

Returning for its second year, this winter fair promises a bustling artisans' market full of unique items – think vintage Christmas decorations, personalised hampers and handmade toys. Enjoy a hot chocolate or a mince pie, and take part in seasonal workshops including wreath making, candle painting and a tablescaping masterclass.

Chelsea Barracks

DECEMBER 9

ELLA RISBRIDGER AT BOOKBAR

Author Ella Risbridger will be at BookBar at 7.15pm to discuss her new book, *In Love with Love*. The book examines our enduring obsession with romantic fiction, from Jane Austen to Jilly Cooper. Ella's visit to BookBar will have a festive twist, looking at Christmas and its important place in the world of romance (think Bridget Jones meeting Darcy in her festive jumper).

To book, visit bookbaruk.com
11 Chelsea Manor Street

DECEMBER 3

WINTER SHOWCASE

Students from the English National Ballet School will perform a showcase of their hard work, giving you the chance to watch the next generation of dance stars. There will be a drinks reception before the performance.

To book, visit enbschool.org.uk

Carlyle Building, Hortensia Road



Inspired by you, crafted by Neatsmith



Neatsmith

Brentwood | Chelsea | Hampstead | Hampton Hill | Hatch End | Guildford | Tunbridge Wells | Dubai

www.neatsmith.co.uk



Calendar / Christmas carol concerts

Foy to THE WORLD

GET IN THE FESTIVE SPIRIT WITH A CAROL CONCERT

NOVEMBER 29

ST MARY'S CADOGAN CAROL SERVICE

Hear St Mary's choir and the choir of St Joseph's Catholic Primary School, followed by a festive reception and charity raffle.

St Mary's Cadogan Street, 63 Cadogan Street
To book, visit stmaryscadoganstreet.co.uk

DECEMBER 2

ROYAL BROMPTON CAROLS BY CANDLELIGHT

Be uplifted by beautiful carols sung by the London Oratory School and patient choir, Singing for Breathing, all performed by flickering candlelight. Money raised will support patients with heart and lung disease. A BSL interpreter will be on hand to ensure that everyone can enjoy the festive fun.

St Luke's Church, Sydney Street
To book, visit rbhcharity.org

DECEMBER 4

ROYAL MARSDEN CELEBRATE A LIFE CONCERT

Enjoy a selection of carols, prayers and readings at this Christmas service in support of The Royal Marsden Cancer Charity. Those who have lost loved ones can name a star on the Christmas tree, which will be lit-up on the night.

The Royal Marsden Hospital, 203 Fulham Road
To book, visit royalmarsden.org

DECEMBER 4

BATTERSEA CHRISTMAS CONCERT

Sing carols in the company of Battersea rescue dogs! All money raised will go to bring dogs and cats in from the cold.

St Luke's and Christ Church, Sydney Street
To book, visit battersea.org.uk

DECEMBER 4

PLACE2BE

Author and model Sophie Dahl will be in attendance at the Place2Be Christmas carol concert, which raises money for children and young people's mental health.

Holy Trinity Church, 146 Sloane Street
To book, visit place2be.org.uk

DECEMBER 6

ROYAL PHILHARMONIC ORCHESTRA

A highlight of the festive season, this orchestral performance includes seasonal classics from Jingle Bells to All I Want for Christmas is You.

Cadogan Hall, 5 Sloane Terrace
To book, visit cadoganhall.com

DECEMBER 7

SLOANE SQUARE CHORAL SOCIETY

The Chelsea-based choir, directed by Oliver Lallemand, will be performing festive favourites. If you're interested in getting involved, the choir rehearses every Monday between 7 and 8.30pm.

Holy Trinity Church, 146 Sloane Street
To book, visit sloanechurch.org

DECEMBER 8 AND 10

CHRISTMAS CAROLS AT THE ROYAL HOSPITAL

Expect traditional carols and readings by the Chelsea Pensioners, followed by warming mince pies and mulled wine in the Great Hall.

The Royal Hospital, Royal Hospital Road
To book, visit chelsea-pensioners.co.uk

DECEMBER 10

GLASS DOOR CHRISTMAS CONCERT

Chelsea-based homelessness charity Glass Door is hosting an evening of festive cheer, with readings from frontline staff, choral performances and mulled wine.

St Mary The Boltons, 8 The Boltons
To book, visit glassdoor.org.uk

DECEMBER 10

THE CHOIR WITH NO NAME

This joyful Christmas singalong is led by The Choir With No Name: a choir for people who have been affected by homelessness. All proceeds will go to support their work in the community.

Cadogan Hall, 5 Sloane Terrace
To book, visit cadoganhall.com

DECEMBER 20

CAROLS IN SOANE STABLE YARD

The Chelsea Pensioner singers will perform seasonal classics in the Soane Stable Yard - best enjoyed with a mulled wine or mince pie from Heidi Bakery.

Soane Stable Yard, The Royal Hospital
Free to drop in



NOVEMBER 15

CHELSEA CHRISTMAS LIGHT SWITCH-ON

On November 15, the King's Road, Sloane Square and Sloane Street will be illuminated with beautiful festive lighting schemes. To celebrate the switch-on, the King's Road will be pedestrianised from Sloane Square to Walpole Street, making space for roaming entertainment, workshops, pop-ups, a festive market, and plenty of seasonal food and drink.

Local businesses will be getting into the Christmas spirit with their own special offerings. The Cadogan Arms (298 King's Road) will be creating a wintery pub garden serving up warming Irish stew, Guinness and eggnog. Saatchi Gallery will be hosting a Christmas card-making workshop, Trotters (34 King's Road) will give children reindeer makeovers,

Love My Human (308 King's Road) will be dispensing festive doggy treats, and The Chelsea Grocer (Duke of York Square) will offer a pop-up bar serving champagne and mulled wine. For the full list of participating businesses, visit kingsroad.co.uk.

The event will start at noon, and the switch-on itself will take place at 5pm on the main stage at Duke of York Square. Father Christmas himself will turn on the lights with the assistance of his special helper - a local child in need of a treat. Not to be missed!



DAVID MELLOR

Sloane Square shop. Cutlery, Kitchenware & English Crafts



190 Pavilion Road, Chelsea SW3 2BF 020 7730 4259 davidmellordesign.co.uk

14 New Cavendish Street, Marylebone W1G 8UW 020 8050 4259

Calendar

ANYA'S GROTTO IS now open! A highlight of the Christmas season, it's a winter wonderland filled with candy cane forests, twinkling baubles and festive stories by the fireside.

This year Father Christmas will be in residence from November 15, and there will also be a post office to the North Pole where you can post your wish lists. Meanwhile, the Anya Cafe will be serving up a festive afternoon tea which includes a glass of mulled wine and a selection of seasonal cakes.

The Anya Village, Pont Street



EVERY WEEKEND FROM December 6-21, you can visit Father Christmas in his greenhouse grotto for a festive storytelling session. Each child will leave with a special gift from Santa, and will also have the chance to take part in an eco-friendly Christmas crafting activity.

*Chelsea Physic Garden,
66 Royal Hospital Road*

SLOANE STREET will be celebrating its inaugural Christmas Party on November 15. Highlights will include elegant horse and carriage rides, traditional carollers and captivating ballet performances, as well as a candy cane cart from Boodles, hot chocolate from Diptyque and mulled wine and cheese tastings from Jeroboams.

sloanestreet.co.uk



CIRQUE DU SOLEIL®



PREMIUM EXPERIENCES

BEHIND THE SCENES BOX | DELUXE BOX | CIRCUS BOX
VIP LOUNGE | FINE DINING



Royal Albert Hall

FINAL DATES NOW ON SALE

9 JAN — 1 MAR 2026

cirquedusoleil.com/ovo | royalalberthall.com



CHELSEA HAS BEEN named London's leading retail destination in the Newmark UK Vitality Rankings. In 2024, Chelsea was ranked at number 10; this year, it rose up the rankings to claim second place, surpassed only by Cambridge. The report praised Chelsea's "high-end and 'aspirational' mix of shops, pubs and bars" as well as the "cultural focus" provided by Saatchi Gallery.

THE KING'S ROAD hosted its first annual Halloween dog parade on November 1. Starting at the Chelsea Theatre and ending at Sloane Square, the parade of pups in spooky costumes raised money for Therapy Dogs Nationwide and Pets As Therapy. The first 50 dogs to arrive received a goodie bag crammed with treats from Love My Human, and the best-dressed dog won a hamper and a complimentary Love My Human grooming session.



THE NATIONAL ARMY MUSEUM has solved an art world mystery by identifying the previously unknown subject of an 1815 portrait. The museum believes that the black musician depicted in the painting is Thomas James, a percussionist with the 18th Light Dragoons who was awarded the Waterloo Medal after defending officers' baggage from looters. The portrait will now be on permanent display in the Museum's 'Army at Home' gallery.
*The National Army Museum,
Royal Hospital Road*



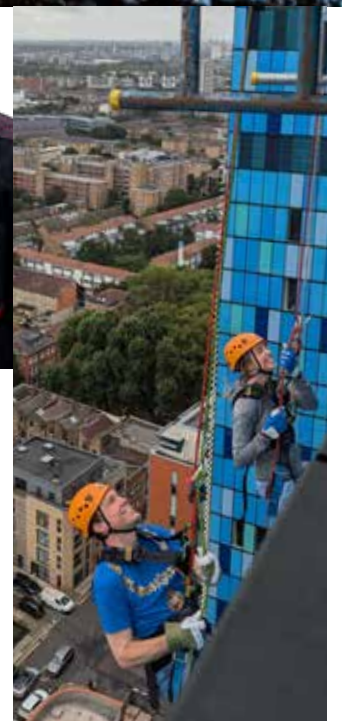
THE WINNER OF THE Wildlife Photographer of the Year competition has been announced. Selected from 60,638 entries, Wim van den Heever's image *Ghost Town Visitor* has been crowned the overall champion. The haunting photograph shows a rare brown hyena stalking an abandoned diamond mining village. The Wildlife Photographer of the Year competition is run by the Natural History Museum, and an exhibition of the winning images is now open until July 12.
Cromwell Road

IMAGE © WIM VAN DEN HEEVER COURTESY WILDLIFE PHOTOGRAPHER OF THE YEAR

MORE THAN 150 WALKERS took part in the Walking West challenge, raising over £26,000 for the CW+ charity. Participants walked 12.2 miles from Chelsea and Westminster Hospital on Fulham Road to West Middlesex University Hospital in Isleworth, cheered along the way by patients and supporters. The money will go to fund vital projects and patient care at the two hospitals.
369 Fulham Road



THE MAYOR OF KENSINGTON AND CHELSEA recently abseiled from the highest helipad in Europe (at the Royal London Hospital in Whitechapel) to raise more than £15,000 for London's Air Ambulance charity. Cllr Tom Bennett said: "I did this to support London's Air Ambulance. They are a vital service for London, and while we all hope we'll never need them, it's reassuring to know they're there for every single one of us."



CARTIER ON SLOANE STREET has reopened its doors after a refurbishment. The spacious store showcases the brand's collections, as well as offering click and collect, gift wrapping and leather strap replacement for watches. Don't miss the tailored "set for you" service: simply select a diamond and a setting, and the team will create a bespoke piece just for you.
143-144 Sloane Street



THIS OCTOBER, Sloane Street transformed into an open-air gallery as the first ever official destination partner for Frieze Week. 'Modern Nature' was a curated trail featuring outdoor art pieces from artists Marc Quinn, Maya Rose Edwards, William Farr, James Jessiman and Ro Robertson. Each piece provided a new perspective on our relationship with nature, tying into Sloane Street's recent transformation into a leafy green boulevard. Matthew McLean, Creative Director of Frieze Studios, said, "responding to Sloane Street's history – home to seven acres of gardens and London's original botanic garden – and its lush, plant-filled present, we hope that the works in 'Modern Nature' will give the neighbourhood's residents and visitors alike a chance to step out of the moment, and look ahead."



Dates For Your Diaries

CELEBRATE THE FESTIVE SEASON WITH ENCHANTING EVENTS AND CURATED MENUS

Thanksgiving

Thursday 27th November

Gather around our table this Thanksgiving. Enjoy live music and a dessert trolley serving seasonal favorites, including pumpkin and pecan pies.

Mince Pie Workshops

Thursday 4th and

Wednesday 10th December

Enjoy our Mince Pie Workshops, uncovering the secrets to crafting mince pies in this exclusive festive masterclasses, guided by chef Pâtissier Benoit Blin.

Afternoon Tea

Saturday 15th November to

Wednesday 31st December

Experience afternoon tea with a live pianist creating an unforgettable experience in our lounge.

Christmas Eve

Wednesday 24th December

Experience the enchantment of Christmas Eve with our curated menu and live music from 7pm to 10pm, setting the stage for a magical night ahead.

Christmas Day

Thursday 25th December

Celebrate a joyous Christmas Day with a festive feast. Anticipate a surprise visit from Father Christmas, adding a touch of wonder to your celebration, along with live music throughout the day.

New Year's Eve

Wednesday 31st December

Welcome the New Year in style with a four-course menu; whether you desire an early dinner or a midnight celebration, The Cadogan is the perfect destination.

Christmas Parties and Group Dining

Our flexible dining spaces are ready to host your festive event, whether a private gathering for friends or a grand experience with family, our dedicated team is on hand to ensure a seamless and unforgettable celebration.

Discover The Cadogan, A Belmond Hotel's events and festive dining experiences at belmond.com/thecadogan



THE CADOGAN

A BELMOND HOTEL
LONDON



75 Sloane St, London SW1X 9SG

@belmondcadogan

belmond.com/thecadogan 020 7048 7141



THE EVER AFTER GARDEN
ARRIVES IN CHELSEA,
RAISING VITAL FUNDS
FOR THE ROYAL MARSDEN
CANCER CHARITY

Garden of light

A GARDEN OF 30,000 ILLUMINATED ROSES is coming to Sloane Square from November 13. The Ever After Garden is a beautiful, calming space where those who have lost loved ones can come to remember them at Christmas. For a £15 donation to the Royal Marsden Cancer Charity you can dedicate a rose in someone's memory, providing a space for family and friends to come together in remembrance.

The Ever After Garden was created by Chelsea designer Anya Hindmarch and fashion writer Camilla Morton,

inspired by the memory of the late production designer Michael Howells. It has raised £1.9 million for the Royal Marsden Cancer Charity since 2019, funding life-saving research for cancer patients across the world.

Anya Hindmarch says: "The Ever After Garden holds a

special place in the hearts of so many people. Each year, it brings us together to remember our treasured loved ones, while supporting the vital work of The Royal Marsden Cancer Charity to help improve the lives of people affected by cancer.

"I'm delighted that this year, for the first time, the garden will light up Duke of York Square in the heart of Chelsea, giving visitors the opportunity to pause, reflect and dedicate a rose."

To pre-order your rose and for more information, visit royalmarsden.org/ever-after-garden



Fireworks

Lauren Cuthbertson, Principal dancer with The Royal Ballet
kiki.co.uk

STELLA COLE HAD GIVEN UP SINGING FOR TWO YEARS BEFORE SHE FOUND VIRAL SUCCESS ON TIKTOK. NOW SHE'S COMING TO CHELSEA AS PART OF THE LONDON JAZZ FESTIVAL

WORDS: ALICE CAIRNS

All that JAZZ

Music / Jazz festival

WITH HER SMOOTH, SMOKY VOICE and her love of old Hollywood jazz, Stella Cole feels like a time traveller from another era. Yet the story of her success is utterly modern: she went viral on TikTok while the app was still in its infancy, and at just 26 years old, she's bridging generations by turning her gen Z contemporaries into fans of classic jazz.

But it hasn't always been smooth-sailing for Stella. As a student, she swore off singing for two years after being told that her unique style simply wouldn't sell.

"In college I became quite discouraged with singing," Stella says. "What was in fashion was belting as high as you could and doing riffs, and that's not my thing. I was told by a teacher and a couple of professors that what I was doing wasn't marketable, and that if I was going to make it in this industry, I was going to have to sound more like a pop singer. That made me feel very insecure, and so I sort of gave up on singing."

When the pandemic started, Stella returned to live with her parents in their home in Illinois. The family turned to music for comfort, cosying up to watch old movie musicals every evening and listening to Judy Garland, Frank Sinatra and Nat King Cole.

"I began to realise how much I'd missed singing," Stella says. "My dad suggested I post some videos of myself on YouTube or Instagram, but I was embarrassed about my friends finding them. So I went on TikTok instead, which at the time was a relatively new app that none of my friends were using."

Almost immediately, Stella's videos began to find an audience. Her performance of Stephen Sondheim's *Everybody Says Don't* received 40,000 views, and her rendition of *Moon River* was shared by James Taylor.

"It was bizarre!" she says. "My life wasn't changing at all in a day-by-day way – I was still living with my parents in the middle of the woods, isolated from everything. But I began to have tens of thousands of notifications on my phone every single day."

Stella believes her music offered people a form of escapism during the long days of lockdown. "During the pandemic, so many people were under stress, or

experiencing illness. People said my music calmed them down, or that watching my video was the first deep breath they'd taken all week. I had never imagined that my voice or this music could have that kind of impact.

"The best explanation I can offer is that the music I love was first created coming out of the Great Depression, during a really tumultuous time for world politics. Now, at a time when there's so much chaos and so much division, I think people need that same sense of escape. A lot of people seem to have found a way to ease their worries in the old Hollywood magic of it all."

After the pandemic, Stella wanted to prove that she

could make it as a live performer, not just as an online star. She moved to New York and began contacting any jazz club, bar or restaurant she could find.

"Even if I passed a hotel with a piano, I'd go in and ask if they needed a singer! My first gig was at this Italian restaurant in Brooklyn called Giovanni's Brooklyn Eats. After singing for three hours I'd get a big Italian meal and as much wine as I wanted – I was living the dream! I'm glad I put in that time in the 'real world', proving myself as a performer, just as I'd worked hard to gain my online following."

Stella now has 1.7 million followers, 12.6 million likes on TikTok, a world tour under way and a record deal with Decca.

She's performed sold-out shows at venues like Carnegie Hall and Madison Square Gardens and her new album, *It's Magic*, is out now.

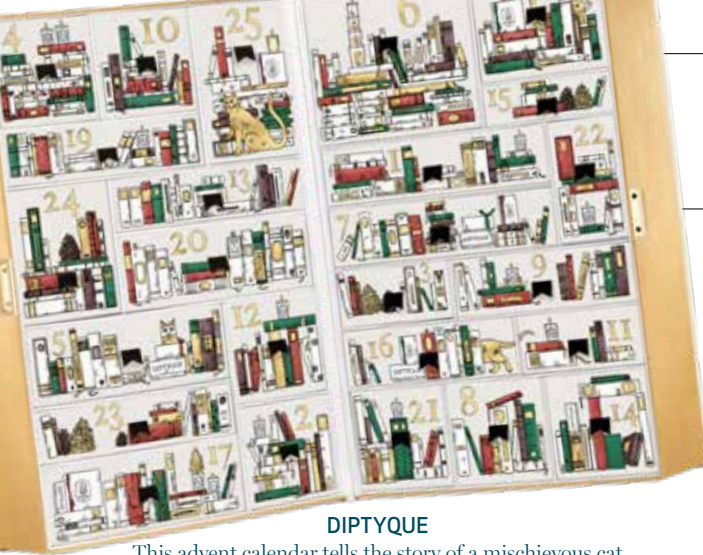
"I wanted to create something very ethereal and up in the clouds, floaty and romantic. Again, I wanted to reference the way that this music is a kind of magic, with the power to ease us in times of trouble."

She is also working on some of her own songs. "I've never put out an original song, and almost no one has heard what I've been working on, but it's something that's been feeling really creative and exciting. So who knows – maybe I'll be able to share that soon."

See Stella Cole at Cadogan Hall, 5 Sloane Terrace, on November 16 as part of the EFG London Jazz Festival



"A LOT OF PEOPLE SEEM TO HAVE FOUND A WAY TO EASE THEIR WORRIES IN THE OLD HOLLYWOOD MAGIC OF IT ALL"



DIPTYQUE

This advent calendar tells the story of a mischievous cat who lives in a Parisian bookshop. Along the way you'll find candles, perfumes and unique decorative objects like baubles and paperweights.

£399, 161 Sloane Street

SISLEY PARIS

Illustrated by Luke Edward Hall, this calendar contains 24 skincare and haircare essentials.

£640, Peter Jones, Sloane Square

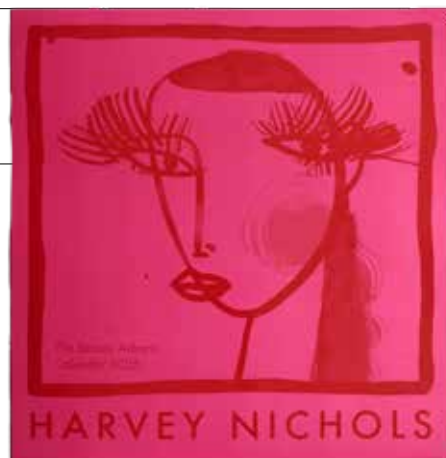
ALL ABOUT ADVENT COUNT DOWN TO CHRISTMAS WITH THE VERY BEST ADVENT CALENDARS



BIRLEY CHOCOLATE

Behind each door you'll find a lovingly handcrafted chocolate in flavours like cappuccino, hazelnut, strawberry and sour cherry.

£20, 24 Cale Street



HARVEY NICHOLS

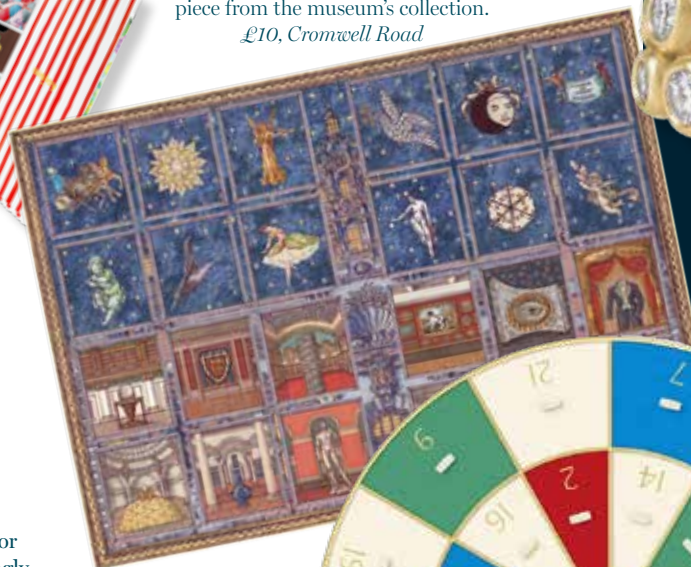
Discover beauty gifts from brands like Charlotte Tilbury and La Prairie. One in every 50 advent calendars conceals a £50 gift voucher.

£250, 109-125 Knightsbridge

VICTORIA & ALBERT MUSEUM

Behind each window of this beautifully illustrated calendar you'll discover a piece from the museum's collection.

£10, Cromwell Road



JO MALONE

Open the drawers to find seasonal scents, miniature candles and bath and body favourites.

£360, 17 King's Road



Gift guide / Christmas



ANABELA CHAN

The gemstones in these showstopping earrings were synthesised from fruit and vegetables, giving food waste a beautiful new life.

£1,490, 35b Sloane Street



LYLIE

The 11 diamonds are designed to scatter sunlight in unusual and beautiful patterns.

£8,495, 1 Sparkes Cottage, Graham Terrace

ALL THAT GLITTERS PUT SOME SPARKLE IN YOUR STOCKING



BOODLES

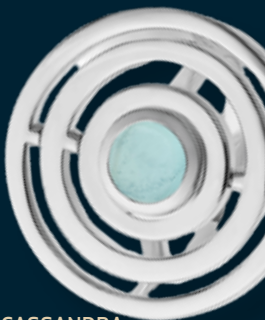
Inspired by the twists and turns of a race track, these earrings shimmer with pink and white diamonds.

£21,000, 6 Sloane Street

KIKI MCDONOUGH

Inspired by fireworks, this pendant features a colourful cluster of gemstones and diamonds.

£2,400, 12 Symons Street



CASSANDRA GOAD

The Gyroskop ring is inspired by the concentric rings of an onion.

£860, 147 Sloane Street

THEO FENNELL

These pearl drops are suspended from a miniature 18-carat gold crab.

£6,250, 2 Garrison Square



Gift guide / Christmas

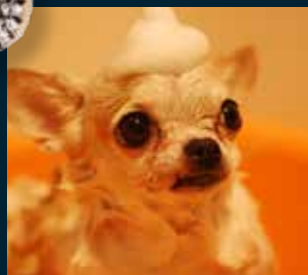
BARBOUR X FARM RIO

Want to coordinate outfits with your dog? Now's your chance!
Human coat, £399, dog coat, £109.
Farm Rio, 86 King's Road



ANNOUSHKA

Keep your pup close to your heart with this diamond studded pendant.
£5,900, 41 Cadogan Gardens



BACKSTAGE X LOVE MY HUMAN

Enjoy a pamper session at Backstage beauty salon while your dog receives a makeover at Love My Human Townhouse.
Backstage, 335-337 King's Road; Love My Human Townhouse, 330 King's Road



LALAGE BEAUMONT

This silk banderole in a "dogs of Chelsea" print can be worn around the neck, wrist or the handle of your bag - or perhaps as an accessory for your pup.
£95, 58 Beauchamp Place



PAW POWER

CHELSEA IS A DISTRICT OF DOG LOVERS, AFTER ALL

PETER JONES

This fabric poodle bauble would make a great stocking stuffer.
£8, Sloane Square

SMYTHSON

A stylish notebook in leather, complete with a canine design.
£195, 141-142 Sloane Street



THE CHELSEA TOWNHOUSE

Pets are welcome to stay at The Chelsea Townhouse, where they'll be provided with a dog bed and bowls, a complimentary squeaky toy and even access to grooming services.
Dog charge £30 a night, 26 Cadogan Gardens



CHELSEA PHYSIC GARDEN

If your happy place is Chelsea Physic Garden, you can't go wrong with this handmade decoration inspired by the pelargonium glasshouse.
£15, 66 Royal Hospital Road



SLOANE STREET

Treat that special someone to a shopping spree on London's most elegant street.
Up to £500, sloanestreet.co.uk

ROYAL COURT THEATRE

An annual membership means you'll receive priority booking and early access to £15 tickets every Monday.
£70 per year, Sloane Square



CAFE LINEA

A gift card from Chelsea's hottest new cafe would make a perfect Secret Santa.
90 Duke of York Square

JOHN SANDOE BOOKS

The children's book subscription gives you a monthly selection of new favourites as well as beautiful editions of the classics. Simply tell the team how old your child is and they'll do the rest.
From £200, 10-12 Blacklands Terrace



ONLY IN CHELSEA
WHY GO ANYWHERE ELSE?

COSMETICS A LA CARTE

The bespoke lipstick voucher allows you to create your own lip colour, perfectly matched to your skin tone and sense of style.
£80, 192 Pavilion Road

Gift guide / Christmas



ANYA HINDMARCH

Proclaim your love of ketchup to the world with this playful sequined tote.

£1,295, 15-17 Pont Street



DAVID MELLOR

This carving set comes in a beautiful walnut box.

£135, 190 Pavilion Road

BIRLEY CHOCOLATE

A festive showstopper with candied orange, roasted nuts and creamy chocolate.

£65, 24 Cale Street



OTTOLENGHI

The ultimate hamper comes crammed with everything from cherry and custard panettone to cinnamon bun cookies. It's available in alcoholic and non-alcoholic versions.

£370, 261 Pavilion Road



LONDON CHEESEMONGERS

A cheese and cider subscription guarantees you a monthly delivery of three delicious cheeses paired with a cider that suits them perfectly.

£540 for 12 months, 251 Pavilion Road



THE CHELSEA GROCER

Ruinart rosé is a fruity champagne with notes of cherry and red berries - the perfect celebratory tipple.

£90, Duke of York Square

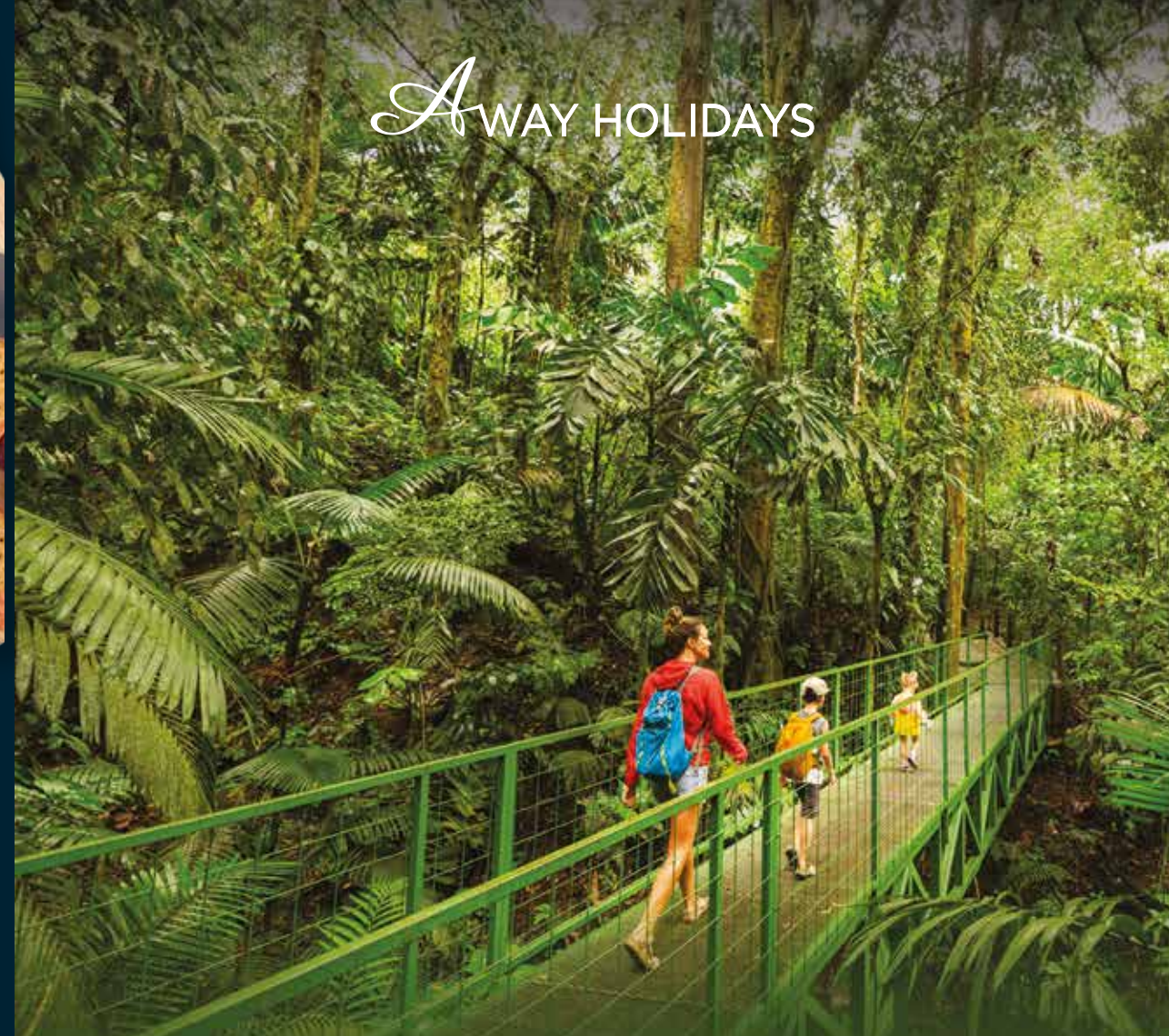


LADERACH

A selection of creamy chocolate in flavours like caramelised almond florentine and fruity crushed raspberry.

£27, 27 King's Road

AWAY HOLIDAYS



Make Family Memories That Last a Lifetime

7 Nights from £505*pp

Family adventures have never been easier – with hundreds of “Kids Stay Free” holidays, now’s the time to turn dream getaways into reality. Splash through Dubai’s waterparks, explore Thailand’s exotic islands, relax on Bali’s tropical beaches or unwind in Turkey’s all-inclusive resorts. From city breaks to beach escapes, there’s something for every family and every age, making it simple to spend quality time together and create memories that last a lifetime.

Away Holidays makes planning stress-free with expertly curated family packages, unbeatable deals and accommodation options designed for comfort and fun. From family-sized suites and kid-friendly dining to exciting excursions and entertainment, every detail is thoughtfully arranged for the perfect getaway. Discover the joy of travel with Kids Stay Free holidays across the world’s favourite family destinations.

scan me



Awayholidays.co.uk Or Call us 24/7 on 0203 468 8722



ORDER UP! is a new cookbook featuring recipes from 20 of London's favourite cafes, bakeries and restaurants. Bread Ahead on Pavilion Road has contributed its recipe for the iconic Chelsea bun, featuring a spiced swirl and a delicious syrupy glaze. Proceeds from sales of the book will go to Hospitality Action, a charity that supports hospitality workers through financial, physical or psychological struggles. 249 Pavilion Road

WANT A BEAUTIFUL gingerbread house but lack the culinary skills (or the time) to construct your own? This showstopper (£75) from Birley Bakery would make a beautiful centrepiece, with a snow-topped roof and candy-striped detail.

28-30 Cale Street



11 CADOGAN GARDENS CHELSEA

FEEL THE MAGIC OF FESTIVE DINING THIS CHRISTMAS



Discover more

Gift guide / Christmas



Colbert recently released a limited-edition neckerchief to celebrate Chelsea Dog Day. The pupstastic print was created by the artist Charlie Taylor, and was inspired by the elegant pooches that frequent the restaurant. The neckerchiefs were given away for free to the dogs (and their owners) who visited Colbert for a puppuccino or a pupcake on October 4. 50-52 Sloane Square



VENCHI HAS ADDED two new flavours to its bestselling "chocolate caviar" range. The raspberry flavour combines a liquid coulis with rich dark chocolate, while the gianduia is a whole Piedmont hazelnut encased in creamy milk chocolate. The signature "caviar" texture comes from the crunchy chocolate grains, which top every flavour in the collection.

71 King's Road

THE CADOGAN ARMS is serving up a thanksgiving feast on November 27, complete with roast turkey, shrimp salad, pecan pie and ginger biscuit s'mores. Vegetarians, fear not: there's an alternative menu with corn chowder and roasted squash. 298 King's Road

DON'T MISS "TACOS WITH FRIENDS" on Tuesdays at Ixchel. Every week, head chef Ximena Gayosso Gonzalez creates just 20 portions of a limited-edition taco inspired by her Mexican heritage. Be one of the select few to sample it before it's gone! Ixchel, 33h King's Road



MAGIC IS IN THE DETAILS.

Order your Thanksgiving and Festive Meals today.

Let us take care of the details, so you can enjoy every bite. From Animal Welfare Certified turkeys, to chef-inspired meals and show-stealing desserts, it's time to make the table shine.



[wholefoodsmarket.co.uk](https://www.wholefoodsmarket.co.uk)



Scan to order

A WARM WELCOME TO THE TRAFALGAR - the first new pub on the King's Road in over a century. It comes courtesy of Tom Peake, Mark Reynolds and Nick Fox - childhood friends and founders of Three Cheers Pub Co, and promises to serve up live performances as well as pints.

"Because the pub is part of the The Gaumont creative quarter, we wanted to keep things exciting and creative" explains Tom.

"That's why the Havana room on the lower ground floor will be a dedicated space for live entertainment throughout the week. There'll be comedy on Thursday nights, live music on Tuesdays and Fridays, cabaret on Saturday and then 'songbook sessions' on Sunday, which will be really fun jazz and piano performances which you can enjoy with your Sunday roast."

While the upstairs space delivers traditional, cozy pub vibes, the downstairs includes a hidden bar, a first-class sound system and an antique mirrored ceiling. It's the perfect place for performances from the likes of the award-winning comedy club Always Be Comedy, which will be at The Trafalgar every

Meet your new local

THE KING'S ROAD HAS A BRAND NEW PUB.
WE MET THE TEAM BEHIND THE TRAFALGAR

WORDS: ALICE CAIRNS

Thursday, with stand-up shows from comedy A-listers like including Nish Kumar, Phil Ellis and Sophie Duker.

"There will always be something exciting going on" says Tom. "We want the pub to become part of the creative life of the community, and to be part of the artistic tradition of the King's Road."

For Tom, Mark and Nick, who have loved Chelsea's pub scene for decades, creating a new pub on the King's Road is a full circle moment.

"Whether it's the Chelsea Potter or

The Cadogan Arms, we've drunk in them all over the years!" says Mark. "It's amazing to think that we're going to be the next pub in this cracking location."

From the outset, the Three Cheers team knew that they wanted to create what they call "a proper pub".

"When I've spoken to people in Chelsea, I've sensed a real hunger for a real pub, a proper pub" Tom says.

"For me, that means a sense of warmth and relaxation. A proper pub should be somewhere you can feel comfortable dropping in any time, day or night. You should be able to visit with all kinds of people - with your in-laws for lunch, or with a bunch of friends for a big night out. 'Warmth'

is the big word that comes up again and again, whether it's the staff being warm and friendly or just the general sense of place.

"That was one of our biggest challenges actually, as this isn't a cozy little country pub - it's an epic building! So with the scale, with our five meter high ceilings and four metre wide arched windows, we've had our work cut out to keep this space feeling friendly and inviting. But I think we've achieved it!"

Most importantly, the team hopes that The Trafalgar will serve the community and become a part of the daily lives of local residents.

"The thing I really love about pubs is that they can be a place where you

can have pretty much any occasion in your life,

whether it's a birthday, a wedding, a wake, or just coffee with a friend" says Nick.

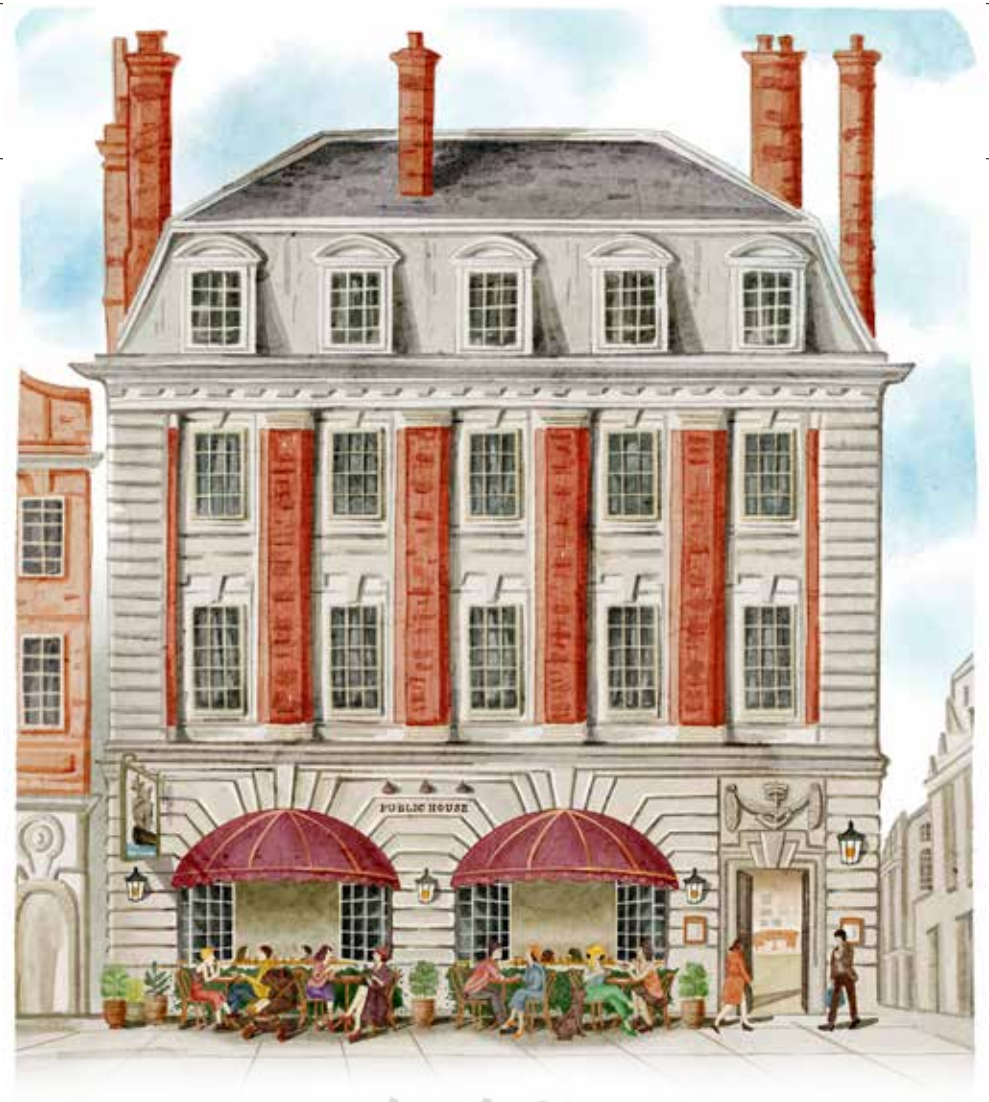
"A good pub sits in the community, and can be different things to different people at different stages in their lives. That's a pretty

wonderful thing, and it's what I hope we can provide with The Trafalgar"

"And it's so exciting to be the first new pub to offer that in over a century" Mark adds. "I hope we'll be a big presence on the

King's Road, and hopefully be here for another 100 years at least!"

224-226 King's Road



Art / News

UNTIL NOVEMBER 30 Myths, Dreams and New Realities

Showcasing work by 13 emerging artists from across the Asian diaspora, an eye-opening group exhibition brings dreamlike visuals to Saatchi Gallery. The works range from intricate textiles and surreal ceramics to ethereal paintings and symbolic assemblages. From Lulu Wang and Sato Sugamoto's larger-than-life anthropomorphic shapes and tangled wires to Wink King Moe's cotton candy-coloured landscapes and Marcos Kueh's detailed tapestries, each artist offers new ways of seeing. *Duke of York Square*

RABIA S AKHTAR NEW BEGINNING, 2025
IMAGE: KRISTIN HELGEBERG GALLERY



NOVEMBER 7 Behind the Mask

Deeply committed to helping military veterans heal from their trauma, Lester Oram has used art and creativity as a means to help former soldiers explore their emotions. A curator at the US embassy in London, Oram's Behind the Mask initiative encouraged tri-service veterans to explore their emotions through the painting of masks. In a talk at the National Army Museum, he will reveal how this initiative came about and how he was able to persuade veterans to take part. 12-1pm, free (booking required). *Royal Hospital Road*

IMAGE: KEN ADLARD



NOVEMBER 6 - DECEMBER 6

Adeline de Monseignat - The Great Escape

Known for her poetic engagement with materials and the body, along with her recurring motifs - spheres, seeds, ladders and wheels - that become vessels for the cycles of life, Adeline de Monseignat pushes the boundaries of what sculpture can be. This November the Mexico City-based artist brings her latest works to Cadogan Gallery. They reflect and expose the tensions between containment and release, presence and absence, inviting viewers into a world of visceral tension and quiet revelation. *7-9 Harriet Street*

ADELINE DE MONSEIGNAT
IMAGE: LUIS GARVAN, JULY 2025



GUSBOURNE

GIVE THE GIFT OF GUSBOURNE

From award-winning wines to
vineyard tours and tasting experiences.



GUSBOURNE.COM



**NOVEMBER 22-30
The Joy of Chelsea**

Founded in 1910, the Chelsea Art Society (CAS) remains a loyal, devoted supporter of local artists, with 105 members. A recipient of the Cultural Champion award at the Chelsea Awards, it continues to play an integral role in Chelsea's cultural fabric, as exemplified by its Autumn Members exhibition. Judged by author Clare Pooley – the winning artist will be awarded the William Sloane medal and £2,000 – it presents myriad works capturing the form, spirit and energy of the local area, inviting viewers to see the artists' craft up close and buy their work.
340 King's Road



**NOVEMBER 17-29
The Lower Zambezi & Other Paintings**

Marking nearly two decades of painting the Lower Zambezi, Serena Vivian-Neal's depictions of this majestic corner of Africa come to The Gallery at Green & Stone this November. Sharply observed and crafted with great care and affection, her work takes the restless and radiant Zambezi as its muse, each canvas carrying the subtle energy of someone who has watched the great river at dawn, at dusk and in silence in between. A Camberwell School of Arts graduate, who apprenticed in gilding and restoration with FA Pollak in St James's, Vivian-Neal's opening-night auction will benefit the Painted Wolf Foundation, underscoring a commitment to the landscapes and wildlife that have long shaped her art.
251-253 Fulham Road

GEMS OF CHELSEA CHRISTMAS CARDS

The cultural significance of Chelsea is being brought to the wider public with a collection of Christmas cards of images by acclaimed artist Nesta Fitzgerald. A Dublin-based freelance illustrator with a background in art history and advanced training in illustration at the Royal Drawing School, Fitzgerald's cards are imprinted with images of old and new Chelsea, highlighting the rich history and heritage of the royal borough. Proceeds from the card sales will be donated to the Chelsea Pensioners' Veterans Outreach programme, which provides vital support to veterans from all the armed forces. Support the community and spread some Christmas cheer by purchasing a card from nestafitzgerald on Etsy.



An intimate, very private boutique hotel situated close to Sloane Square, in the heart of Chelsea, comprising 19 individually themed bedrooms and suites each furnished with an extraordinary variety of valuable antique furniture and art.

A fine treasure hidden away in a quiet residential corner of Chelsea, close to Sloane Square, San Domenico House is a boutique townhouse hotel brimming with an elegant mix of sumptuous interiors, eclectic antiques and Latin personality. Recently extended and redesigned, the hotel offers 19 delightful luxury rooms and suites, and a bespoke room service menu to complement the outstanding selection of fine and Michelin-starred restaurants within easy walking distance.

In the heart of Chelsea, San Domenico House celebrates the timeless British tradition of Afternoon Tea. A refined selection of fine teas is paired with delicate finger sandwiches and freshly baked artisan scones served with clotted cream and preserves. An indulgent ritual of taste and conviviality, to be enjoyed in the hotel's elegant lounges or on its charming panoramic terrace.

SAN DOMENICO HOUSE

29-31 Draycott Place London SW3 2SH T: +44 (0)20 7581 5757 reception@sandomenicohouse.com
For reservations booking@sandomenicohouse.com



Wes's world



"THAT'S THE KIND OF MOVIE that I like to make, where there is an invented reality and the audience is going to go someplace where hopefully they've never been before," said Wes Anderson some years ago in a Vanity Fair interview.

At 56 the American film-maker has already cemented auteur status, producing 13 movies in his zany style that gives his cinematic worlds – and the eccentric characters who populate them – the impression of being self-contained, part of an alternative universe defined by symmetrical framing and recurring colour palettes.

From November a landmark retrospective at the Design Museum will bring visitors inside those carefully curated worlds. Granted unprecedented access to Anderson's extensive archives, the museum will display 600 objects – ranging from

**THIS NOVEMBER THE
DESIGN MUSEUM
INVITES YOU TO STEP
INTO THE ECCENTRIC
WORLD OF WES
ANDERSON**

WORDS: WILL MOFFITT

original storyboards, Polaroids, sketches and famed costumes worn by much-loved characters to stop-motion puppets,

miniature models, paintings, props and even handwritten notebooks.

Charting the evolution of Anderson's career chronologically – from his first feature films in the 1990s to his Oscar-winning short film *The Wonderful Story of Henry Sugar* (2023), *Wes Anderson: The Archives* is the first major museum exhibition devoted to the cult film-maker.

Wes Anderson: The Archives opens at 224-238 Kensington High Street on November 21



MAIN: WES ANDERSON IMAGE: SEARLIGHT PICTURES PHOTO: CHARLENGE
ABOVE: INSET: MINIATURE MODEL OF A TRAIN, THE DARJEELING LIMITED
IMAGE: PHOTOGRAPHY: TURNER OF THE DESIGN MUSEUM
ABOVE: MODEL OF THE GRAND BUDAPEST HOTEL IMAGE: © TERRY STEFANOPOULOS - LA CINÉMATHEQUE FRANÇAISE

AQUA VENUS SCULPTURES



Bronze Sculptures as Fountains

Perfect for gardens, residences, hotels, or public spaces

www.aquavenussculptures.com

Tel. + 44 [0] 7596 520 820

Art / Saatchi at 40

TO CELEBRATE ITS 40TH ANNIVERSARY, SAATCHI GALLERY HAS INVITED FRIENDS AND COLLABORATORS TO PAY TRIBUTE TO FOUR DECADES AT THE CUTTING EDGE OF ART

WORDS: WILL MOFFITT

AN INFESTATION OF GIANT ANTS, a retro car hanging from the ceiling and a cluster of alien-like species with translucent bubble heads. If you thought Saatchi Gallery was going to mark its 40th anniversary in low-key fashion, think again.

To celebrate four decades of groundbreaking contemporary art, the world-famous gallery has curated an epic and expansive group show unveiling new works by iconic names and fresh youthful voices.

Spanning two floors and nine major exhibition spaces, *The Long Now* favours long-term thinking over throwaway culture. Newly created works will appear alongside historic pieces that remain impactful and relevant, continuing Saatchi's steadfast commitment to showing art of the moment while giving artists space to realise ambitious, prescient ideas.

The exhibition opens with works exploring process and mark-making – a fundamental human gesture reimagined by Alice Anderson,



Rannva Kunoy and Carolina Mazzolari. This spirit of experimentation runs through works by Tim Noble, André Butzer, Dan Colen, Jake Chapman and Polly Morgan, who push subject, style and scale.

At the centre stands *Passage* (2004), a giant, unsparing nude by Jenny Saville, arguably Britain's greatest living painter, whose legacy has been further cemented by a recent retrospective at the National Portrait Gallery.

Saatchi's continual support for painters both figurative and abstract is further represented by Alex Katz, Michael Raedecker, Ansel Krut, Martine Poppe and Jo Dennis, alongside new and emerging voices who continue to expand the medium's possibilities.

The show also has its share of immersive installations – not least Allan Kaprow's *Yard*, with its chaotic arrangement of tyres, and Conrad Shawcross's suspended *Golden Lotus (Inverted)*, which transforms a vintage car into a kinetic sculpture.

Questions concerning the use of technology and the future are also addressed, with Chino



MAIN:
CONRAD SHAWCROSS,
GOLDEN LOTUS (INVERTED).
INSTALLATION VIEW AT SAATCHI
GALLERY, 2019
IMAGE: JUSTIN PIPERGER

ABOVE:
ANDRÉ BUTZER, FRAU AM TISCH
MIT FRÜCHTEN – MATISSE, 2022
IMAGE: COURTESY OF THE ARTIST AND
GALERIE MAX HETZLER

BELOW FROM TOP:
MAT COLLISHAW, STILL FROM
AFTERMATHS, 2025
IMAGE: COURTESY OF THE ARTIST
HENRY HUDSON, (30.1132402,
-91.4725737), 2023
IMAGE: COURTESY OF THE ARTIST

Moya, Mat Collishaw and Tom Hunter reflecting on surveillance, automation and AI – considering how the digital world permeates contemporary life.

Themes of fragility and climate change find fierce articulation in Gavin Turk's fractured *Bardo*, which suggests cultural decay and the precarious balance between permanence and collapse, just as Edward Burtynsky's hauntingly beautiful photographs stand as stark visions of environmental devastation.

To cap it all off, Richard Wilson's iconic *20:50* – shown at each of the gallery's past locations and now, for the first time, presented on the top floor – fills the space with recycled engine oil.

For 40 years Saatchi has exhibited art that entertains, entrances and asks questions about who we are and where we're going. This retrospective could simply celebrate the here and now, but in true Saatchi style it wants to look into the future.

The Long Now: Saatchi at 40 opens in Duke of York Square on November 5 and runs until March

Forty
years of
art



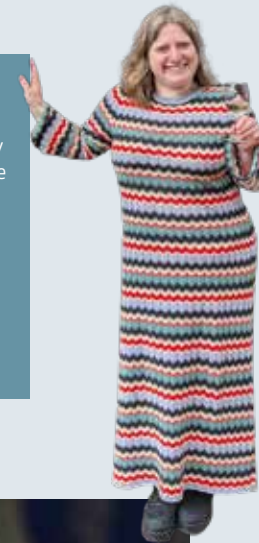
JANE AUSTEN was born on December 16 1775. Known for turning her satirical gaze on the marriage market of her day, her world is most often imagined as bucolic: small towns, rolling fields and the occasional country house (complete with Colin Firth in a lake). But did you know that Jane was also familiar with London, where she would stay with her favourite brother, Henry Austen, in his houses in Chelsea? Jane's first visits to Chelsea were to 64 Sloane Street, where Henry lived with his wife. Henry was

Charles Dickens, "few would venture to Chelsea unarmed and unattended".

Jane saw her visits to London as the perfect time to get on with the painstaking tasks of editing and proofreading her manuscripts. When she visited 64 Sloane Street in 1811 and 1813, she was in the process of preparing first *Sense and Sensibility*, and then *Pride and Prejudice* for publication. Jane's sister Cassandra initially feared that the bustle of London life would distract Jane from her work; Jane reassured her by letter that "I

CHRISSY RYAN, FOUNDER OF BOOKBAR

I love *Sense and Sensibility*. It was the first Jane Austen novel I read as an adult and I finally understood her characteristic wit and the satire that had passed me by in my adolescence. This story of two very different sisters overcoming trials in life and love is one that continues to play out in modern fiction – from *Coco Mellors* to *Abigail Bergstrom* – and it's a trend that's unlikely to tire, thanks to Austen's iconic novel. 11 Chelsea Manor Street



could no more forget S&S than a mother could forget a sucking child". When she wasn't writing, Jane loved walking down Sloane Street on shopping expeditions and visiting the London theatres.

Eliza Austen died in 1813, and by 1814 Henry had moved to a new home at 23 Hans Place. Here, Jane had use of a downstairs room opening on to the garden square, which she loved for its "solitary coolness". She'd work on proofs of *Emma* inside, before taking a stroll through the garden to refresh herself. In the evenings, Henry would hold lively dinner parties – Jane described harp playing, "good manners and clever conversation".

All was not well with Henry, however. In 1815 he became seriously ill, and Jane was required to put the manuscript of *Emma* aside to nurse him. Shortly after he recovered, his bank crashed, and he left London in financial distress to become a curate in the village of Chawton in Hampshire.

Although Chelsea has transformed since Jane's visits, some traces of the places she'd have known can still be spotted. The garden at Hans Place (described by Jane as "quite a love") is still recognisable in its arrangement, and if you walk down Hans Street you can catch a glimpse of the octagonal window of the Sloane Street house where Henry and Eliza threw their lively parties.

So, whether you love Jane Austen for her swooning romance or for her biting social commentary, keep your eyes peeled for her landmarks next time you're strolling through Chelsea.



Literary links

AS WE CELEBRATE THE 250TH ANNIVERSARY OF JANE AUSTEN'S BIRTH, WE EXPLORE HER CONNECTIONS TO CHELSEA
WORDS: ALICE CAIRNS

a banker, a curate and in later life, an anti-slavery activist. He was a passionate supporter of his sister's literary career, and would promote her books among his smart London friends and liaise with publishers on Jane's behalf. His wife was the vivacious Eliza, whose first husband was killed by guillotine during the French Revolution, and who is believed to have been the model for two of Jane's most flirtatious and lively characters: Lady Susan and Mary Crawford.

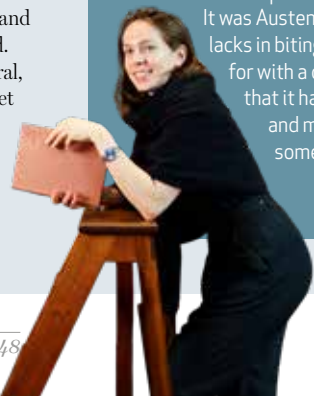
At the time of Jane's visits Chelsea was still rural, with little development to the east of Sloane Street and fields full of grazing cattle. Hans Town, where Henry lived, was a fashionable district, and would have been safe by day. By evening, though, the outskirts of Chelsea would have been frequented by highwaymen – according to

ANNA MIDDLETON, BOOKSELLER AT PETER HARRINGTON

Having a favourite Jane Austen novel is like having a favourite child – you can love and praise them all equally, but secretly you feel that one stands apart. For me, it's *Persuasion*.

It was Austen's last novel and what it lacks in biting satire it compensates for with a quiet compassion. I feel that it has something expansive and melancholy at its heart, something of the splendour of autumn.

100 Fulham Road



ROSAMUND PIKE AND KEIRA KNIGHTLEY AS JANE BENNET AND ELIZABETH BENNET IN *PRIDE & PREJUDICE* (2005)

IMAGE: ALAMY

Interiors / Festive

ANNA MONICH, INTERIOR AND FURNITURE DESIGNER, WITH A STUDIO AND SHOWROOM AT 39 OLD CHURCH STREET:

"This Christmas the showroom is filled with festive inspiration that celebrates craftsmanship, tradition and a touch of whimsy. Continuing my longstanding support for talented Ukrainian artisans, I'm introducing a new collection of handcrafted straw decorations. Each piece is carefully woven, full of charm and character and designed to bring a folkloric warmth to your tree or table. New this year is a collection of LED-lit lamps, crafted from wood with delicately cut-out shapes that cast enchanting patterns of light. To complete the festive table, I suggest natural linen napkins, finished with straw-woven rings. Add a selection of hand-poured beeswax candles in Christmas-inspired designs. Together, they create a look that feels authentic, inviting and timeless."



'Tis the season



CAROLE BAMFORD, FOUNDER OF BAMFORD AND DAYLESFORD ORGANIC FARMSHOPS:

"Nature is always my greatest source of inspiration, so a simple walk through the garden can provide everything I need to create decorations that feel effortless yet beautiful. Fallen branches, clusters of skimmia berries and sprigs of seasonal foliage bring instant charm to mantelpieces and tabletops. I'll also forage in the pantry for pears, pomegranates, walnuts and clementines. Dotting them around in big bowls is an easy way to add colour, texture, abundance and a sense of the season's bounty.

To complete the festive scene, I'll always light plenty of candles. Their gentle glow transforms the atmosphere in moments. Bamford's Cashmere and Chestnut is my perfect winter scent. It's soft, luxurious and layered with notes of smoky kindling that wrap me in comfort and calm."

EXPERTS SHARE
THEIR TOP TIPS
FOR DECORATING
YOUR HOME AT
CHRISTMAS
AS TOLD TO: ALICE CAIRNS



TIMOTHY OULTON



IN STOCK

Available in 7-10
working days*

Sink into Christmas

Give a gift that stirs the senses, from enveloping sheepskin chairs to shimmering bar cabinets and one-of-a-kind homewares. Delivered in 7-10 days*, just in time to make their Christmas unforgettable.

Quote **Sloane Square Magazine** to enjoy a complimentary glass of champagne and a personalised gallery tour.

Timothy Oulton Bluebird, 350 King's Road, SW3 5UU • 020 3150 2024 • timothyoulton.com

*Selected ranges only. Limited stock available.



BRIAN WOULFE, FOUNDER OF DESIGNED BY WOULFE, AN AWARD-WINNING LUXURY INTERIOR DESIGN STUDIO: "At our country home, a Grade II-listed former vicarage in the Cotswolds, I like to lean into the character and history of the building. Most of the decoration starts with foliage from the garden: holly, bay, ivy, with a bit of eucalyptus or olive to soften it. I use it generously – around door frames, across mantelpieces, trailing along staircases. Candles feature heavily as well as textures like wool or stoneware, which ensure the rooms feel grounded rather than overly styled. Our London flat calls for a lighter touch. The rooms are smaller and quite contemporary, so I keep the decorations more streamlined. I'll use slimmer garlands and repeat them in key places like window ledges or shelving for a sense of rhythm. Cooler tones work better in the city – pale golds, silvers, soft whites. The constant across both places is that I try to take my cues from the building and its context."



SOPHIE PATERSON, FOUNDER OF SOPHIE PATERSON INTERIORS, AN INTERNATIONALLY RENOWNED STUDIO SPECIALISING IN LUXURY RESIDENTIAL INTERIORS:

"I love to adorn my home with festive greenery, from a wreath on the front door to a garland of evergreens on the banister. Bringing the outdoors inside during winter months is an ancient practice that allows me to connect my home to the season. Often, I like to create a tablescape using evergreen foliage from my garden, combined with berries, candles in hurricane vases and elements like acorns and holly. The result feels fresh and understated yet festive. If you prefer a touch of opulence, clustering a selection of glass baubles adds just the right amount of sparkle without overwhelming the natural theme. Coordinate your Christmas decor with the character of the room for a calm, connected feel. For me, the season is about creating ambience and warmth."



As night falls, The Peak transforms into a chic chalet escape

With Fondue Night, City Lights, guests can savour bubbling cheese fondue with decadent accompaniments while admiring panoramic views of London's glittering skyline.

The Peak
1 Cadogan Place
London SW1 9PY

020 7235 1234

jumeirah.com



JUMEIRAH
CARLTON TOWER
LONDON

Fashion / News

ERDEM HAS OPENED the doors of its new Sloane Street store. Created by Erdem Moralioglu, the brand is known for its feminine designs and vibrant prints. *50a Sloane Street*



WATCH THIS SPACE: two more exciting fashion brands are due to open at The Gaumont in early 2026. The first is Mango, the Spanish fashion brand known for its simple, elegant fashion offering for men, women and kids. Next up is Janie and Jack, which creates timeless kidswear with one-of-a-kind prints, thoughtful details and super-soft, long-lasting fabrics. Keep your eyes peeled for more details! *The Gaumont, 196-222 King's Road*



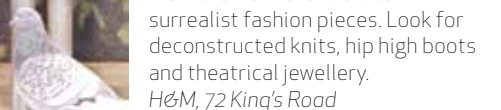
ARKET HAS OPENED a new store in The Gaumont. It's your go-to location for contemporary wardrobe staples, with curated collections for men, women and kids as well as accessories, body care and homewares. The shop itself is spread over two floors: an oasis of Nordic calm with natural materials, custom-made terrazzo flooring and lush greenery. *196-222 King's Road*



TOTEME HAS ARRIVED on Sloane Street. The super-chic Swedish fashion brand is known for minimalist luxury: think simple but striking silhouettes and elegant accessories. Visit to infuse your wardrobe with Stockholm street style. *159 Sloane Street*



H&M HAS COLLABORATED with contemporary designer Glenn Martens to transform bestsellers from the H&M archive into surrealist fashion pieces. Look for deconstructed knits, hip high boots and theatrical jewellery. *H&M, 72 King's Road*



NEEDLE & THREAD IS

coming to the King's Road this November. The brand is known for its ultra-feminine aesthetic, inspired by English tea parties, floral prints and vintage fashion. It also boasts an ethical and sustainable ethos, using 90 per cent responsibly sourced materials (such as recycled sequins and organic cotton) as well as supporting charities including The King's Trust and Save The Children.
194 King's Road



DON'T MISS THE

Knatchbull pop-up boutique on Sloane Street, open until January 4. Founder Daisy Knatchbull said: "Chelsea has long been a cornerstone of British style – from its Swinging Sixties legacy to its place today as a hub of creativity and design – so bringing Knatchbull to Sloane Street feels like a natural and inspiring next step." You'll find an immaculately tailored womenswear collection including fitted waistcoats, silk blouses and soft cashmere sweaters.
150 Sloane Street



MINKA DINK LONDON presents the AW25 edit in a Christmas pop-up on the King's Road in November. Choose from a collection of wardrobe staples to elevate your autumn style, from tailored blouses and Scandi-inspired knitwear to timeless denim and chic seasonal updates, designed to carry you seamlessly from desk to dinner.
81 King's Road



Knuckle Collection



FINCHLEA ESTATES

45 PONT STREET, LONDON, SW1X 0BD

Independent family run company, offering a multi-level residential service to Private and Corporate Clients.

Residential Management Service for both Client and Tenant occupied properties, overseeing all aspects of property maintenance and servicing, tailored to requirements.

Extensive portfolio of Short Term and Long Term residential rental properties throughout Central and West London. Studio apartments through to large residences.

Acquisition and Sales Management service. A trusted and objective service to Private and High-Net-Worth Clients, Investors, Banks, Investment Companies and Trust Funds.

Tel: +44 (0) 20 7823 1530

info@finchleaestates.com

www.finchleaestates.com



50% OFF
With This Flyer

STRENGTHEN & SCULPT YOUR
BODY
EFFORTLESSLY NOW!

WITH OUR EMS
HIFEM SYSTEM

BOTOX, FILLERS & LEMON
BOTTLE NOW AVAILABLE

KNIGHTSBRIDGE
020 7245 6677

SWISS COTTAGE
020 7722 1569

LONDON
**TANNING
& BEAUTY**
londontanningandbeauty.co.uk

Fashion / Trending

*Festive
flair*

CHUNKY KNITS
AND PLENTY OF
SPARKLE WILL SEE
YOU THROUGH THE
SEASON

ALICE + OLIVIA
Gold sequin blazer,
£795, 9 King's Road



ESSENTIEL ANTWERP
Dark green and multicolour
cotton sweatshirt with sequin
embellishments, £265
27a Sloane Square

THE FOLD
Striped
Knighton
jacket, £450
28 Cadogan
Place



NADA GHAZAL
Power of Light
white-gold ring with
pink sapphires, rubies
and rhodium, £4,895
4 Pont Street

STRATHBERRY
East/West mini
soft bag, £475
96 King's Road



TEMPERLEY
Etoile wrap
dress, £1,495
134 Sloane
Street



EBERJEY
Eberjey x Lily Aldridge Inez
washable silk printed long
PJ set, £310
Harvey Nichols,
109-125 Knightsbridge



BIRKENSTOCK
Utti suede leather lace
shoes in thyme, £140
68 King's Road



BRORA
Wool Fair Isle
jumper, £179
6 Symons Street



SIRPLUS
Brown chalk check
wool gilet, £295
178a King's Road

COS
Basketweave wool
jumper, £229
19 Duke of York
Square

SMYTHSON
Large
briefcase
with zip
front in
Ludlow
leather,
£1,550
141-142
Sloane Street



FREYA ROSE
Kami heels, £775
4 Yeoman's Row



SLOWEAR
Slim-fit double-breasted wool
jacket, £1,295
15 King's Road

BURBERRY
Long baroque
viscose blend
Fitzrovia
trench coat,
£2,490
1 Sloane Street



Fashion / Trending



RACHEL RILEY
Cord short and
shirt set, £69
Harrods, 87-135
Brompton Road



BEEBOON
Baby silver leather Mary Jane
pram shoes, £31.95
178 King's Road



AMERICAN VINTAGE
Kids' Padow shirt, £90
105 King's Road

IL PORTICCILO
Mita bloomers in
Bordeaux tartan,
£30
253 King's Road



TROTTERS
Bonnie Tartan
Dress, from £76
34 King's Road



AMAIA
Sherlock double-breasted jacket
in checked tweed, £145
14 Cale Street



BLUE ALMONDS
Knitted babygrow in festive sand,
zero to three months, £91
166 Walton Street



1st Developments Chelsea Limited & Chelsea Projects and Interiors Limited

Behind many of Chelsea's most beautiful homes lies the craftsmanship of two sister companies working in perfect harmony. **1st Developments Chelsea Limited** is the powerhouse on site — a construction management specialist overseeing every nut and bolt, ensuring projects rise from the ground with precision and purpose. Alongside them, **Chelsea Projects and Interiors Limited** bring creativity and finesse, collaborating with leading designers and architects to deliver interiors of effortless sophistication. Together, they embody the essence of modern Chelsea living — where technical excellence meets timeless style, and every detail reflects a passion for perfection.

Affiliation to the Chartered Institute of Builders City of London awarded Freeman of the City of London.

1st Developments Chelsea Ltd established 2017

info@1stdevelopments.co.uk mark.venezia@1stdcl.co.uk 07789121518

Promotion / The Gift of Giving

DESIGNERS GUILD

The Kawana Delft Throw, £180 - vases filled with ferns, blooms and folate - made in heavyweight pure tumbled linen makes a great gift for homebodies. 267-277 King's Road



ALLEY CATS PIZZA

For the ultimate pizza fan, there is Alley Cats Washed Cotton Cap, £35, in green is versatile and unisex. 342 King's Road

WHITE COCO

The fashion forward will love to receive this large hair bow, £16. It makes a great small gift or stocking filler, in brown velvet with bayonet clip, to glam up any everyday outfit. 227 King's Road



LOVE MY HUMAN

Man's best friend also needs love over Christmas. For them there's a HENRI Cowhide Dog Bed, £644, natural leather with pony-look finishing, removable and washable by hand. 308 King's Road



JEROBOAMS

The season calls for port and the Kopke 10 Year old Tawny Decanter, £55, with notes of sweet spice and rich dried fruits is a perfect after-dinner digestif and best served chilled. 336 King's Road



BACKSTAGE

Pamper presents such as a 60-minute party make-up makeover, £60, is great for your beauty obsessed loved one as it involves a full make-up look, ready for any event, Christmas or New Year party. 335-337 King's Road



The Sloane Stanley Estate is located on the west side of the King's Road starting at the Chelsea Fire Station and is a sophisticated shopping destination, a historic culturally-rich area and the birthplace of 20th century fashion and punk movements. The Estate offers a vibrant mix of high-end boutiques, independent shops, flagship stores, alongside contemporary dining and a design hub which continues its legacy of style and creativity.

This area of the King's Road and Fulham Road brings together the very best of Chelsea and prides itself as being a quintessential Chelsea neighbourhood.

Home to national and international brands, it is an edgy, buzzy and a fashionable place to wander. You will find a mix of fashion, design, home, and wellness stores and at night the area becomes a vibrant eating and drinking spot where you are spoilt for choice with eclectic bars, local community pubs, and contemporary dining for every taste.

SLOANE STANLEY

[instagram.com/sloanestanleychelsea/](https://www.instagram.com/sloanestanleychelsea/)



TED'S GROOMING ROOM

For the groomer of the family is Ted's Ultimate VIP, £120. This is the ultimate Turkish barber experience - haircut, shave, eyebrow trim, ear flaming, exfoliation, hot wax, threading, face mask, eye mask, massage and a hot towel treatment. 283 Fulham Road



LAVENDER GREEN

A luxury Christmas wreath masterclass, £250, is for those who love anything festive and floral. The class even includes florist scissors, signature apron, tote bag and a Lavender Green candle. 239 King's Road



PENELOPE CHILVERS

Safe to say the Minnie Leather Pump in silver, £219, is the ultimate Christmas shoe, vintage-inspired, made in Spain and certified by the Leather Working Group. 328 King's Road



LL PORTICCILO

Natale Romper, £80, in a red and green tartan pattern, is ideal for little ones during the holiday season. 253 King's Road





REVEALING THE WINNERS OF THE FIFTH ANNUAL CHELSEA AWARDS

ON OCTOBER 7, we celebrated the fifth annual Chelsea Awards at the Royal Hospital, organised by Cadogan. Chelsea locals, business owners and community figures came together in the glamorous Great Hall to celebrate our unique part of London, with champagne, cocktails and a prize-giving ceremony for the very worthy winners.

The panel of judges read through every one of your nominations, before selecting two shortlisted entries and one worthy winner in each

category. As ever, we were immensely grateful for the number of nominations we received: we read and valued each contribution, and have certainly added some new spots to our (already lengthy!) Chelsea wish list. Our winners were chosen by a judging panel made up of prominent figures from the local community: Tom Bennett, Mayor of Kensington and Chelsea; Lucy Cleland, co-founder and editorial director of Country & Town House as well as co-founder of the Chelsea Arts Festival; Hugh Seaborn,

chief executive of Cadogan; Victoria Steward Todd, director of the Kensington + Chelsea Foundation; and Dr James Thompson, chairman of the Chelsea Society. As ever, it was a pleasure to celebrate our unique local community, which is full of masterful craftspeople, delicious food, unique businesses and charitable and generous individuals. We hope that in perusing this list of winners and shortlisted businesses, you may discover something new to appreciate or explore in Chelsea.

Until next year!



FUTURE FORWARD

A company that is innovating to meet tomorrow's challenges

WINNER

BookBar, recently opened on Chelsea Manor Street, combines a bookshop, café and bar in one welcoming space. Surrounded by carefully curated books, visitors can relax on comfortable sofas while enjoying expertly brewed coffee, a glass of wine, or other refreshments, all served by knowledgeable and friendly staff.

SHORTLISTED

Anabela Chan is a pioneering fine jewellery brand renowned for its commitment to sustainability, innovation, and artisanal craftsmanship.

Spruce, is an eco-friendly, B Corp home-care brand on a mission, combining innovation with sustainability.

COMMUNITY COLLABORATION

Joining forces for the greater good

WINNER

The Chelsea Heritage Quarter is a vibrant new cultural destination, bringing together the Royal Hospital Chelsea, the National Army Museum, Chelsea Physic Garden and Cadogan. Recently granted charitable status, the Quarter showcases the heritage of the area through talks, walking tours, installations, performances.

SHORTLISTED

Chelsea in Bloom, organised by Cadogan, is London's largest free flower festival.

The Fashion School in Chelsea is a pioneering community-focused initiative that teaches fashion to neighbour-hood children.



CULTURAL CHAMPION

An organisation that has enriched Chelsea's culture and raised the area's profile

WINNER

The Chelsea Art Society is a not-for-profit organisation that has been supporting local creativity for generations. With around 120-member artists, the Society not only showcases their work but also provides opportunities for non-members to submit pieces and exhibit alongside them, ensuring a rich and diverse artistic offering.

SHORTLISTED

Cadogan Hall is a concert venue and a uniquely local institution with an international reputation. **The Royal Hospital Chelsea**, renowned as the home of the Chelsea Pensioners, is a retreat for veterans of the British Army.



MASTERS OF CRAFT

An outstanding artisan

WINNER

Cassandra Goad celebrates forty years in jewellery this year, having been part of the community since opening her first boutique on Ellis Street in 1999. She is known for reimagining treasured heirlooms for new generations while championing British craftsmanship through her London workshop and collaboration with Goldsmiths’ Hall.

SHORTLISTED

Cosmetics à la Carte is renowned for its mastery of bespoke beauty and has been blending for over 50 years. **Timothy Oulton**, with a heritage rooted in the antiques business, has spent decades perfecting artisanal techniques that bring each piece to life.

ONLY IN CHELSEA

A business that brings something unique to the area

WINNER

The Royal Court Theatre is renowned for championing new writing and ground-breaking plays. Since opening in 1956, it has earned a reputation as a crucible for bold, innovative voices that challenge social, political, and cultural norms.

SHORTLISTED

The Sloane Club is one of London’s most distinguished private members’ clubs. **Trotters** is a children’s clothing and lifestyle shop, offering clothing to shoes, toys, books, and even a hairdressing service.



IN GOOD TASTE

Someone who has made Chelsea more delicious

WINNER

The Cadogan Arms on King’s Road was restored in 2021 to honour its historic character while offering a contemporary British dining experience. Under the leadership of Managing Director Dom Jacobs, the pub has flourished as a welcoming hub for locals and visitors alike, whether for a long lunch, celebratory feasts, post-wedding celebrations or match-day specials.

SHORTLISTED

Heidi Bakery offers high-quality food and drink, all baked in-house and has quickly become a cherished addition to Chelsea’s hospitality scene. **The Surprise** welcomes guests with warmth and friendliness, making it a true home-from-home for locals and visitors alike.

Future forward.
Championing
changemakers.

At Cripps, we care about how our advice supports what really matters to you. Taking it personally from the outset, we’re one dedicated, integrated team – by your side and backing your cause. We inform better decisions, manage risk and uncover new opportunities.

Solving your problems and championing your ambitions, we work together to make a positive and lasting difference.

Proud sponsors of the **Future Forward** award at the Chelsea Awards 2025 – recognising those shaping tomorrow, today.

Community / The Chelsea Awards

COMMUNITY HERO

An organisation or person that has benefited the community through their actions

WINNER

Miriam Parker brings people together through her weekly coffee mornings, which she started nearly thirteen years ago, with one nomination commenting: "She has made a huge difference in my life as I'm not isolated, lonely anymore and I have people to talk to. Coming to the coffee mornings on Wednesday is the highlight of my week."

SHORTLISTED

Jenny Elliott Bennett has dedicated herself to extraordinary humanitarian work since the war in Ukraine began. At great personal risk, she regularly drives medical and veterinary supplies into the most dangerous zones, ensuring aid reaches those who need it most.

Father Michael Robinson has brought an atmosphere of hope, warmth, and reassurance to the parish and wider community since arriving at Holy Trinity Church in Chelsea.



The Chelsea Awards are created by Sloane Square and Cadogan

The awards are also kindly sponsored by Auriens, Jumeirah Carlton Tower, The Cadogan, A Belmond Hotel, Cripps and Sloane Stanley



7am-11pm daily • 1.5M treatments delivered



Relax, you're home.



You know what achy shoulders don't need? A trip across town. With the Urban app, **book massage, beauty and physio at home** – delivered by vetted, qualified pros. Stay comfy, we'll come to you.



Try it with **10% off** your first booking. Use code **SLOANE**. Scan to book or visit urban.co

*Excludes express massage and Get A Drip treatments. Valid until 31st December 2025.

Rated 'Excellent' on Trustpilot • Since 2014



Depuis 1998

MEDICARE FRANCAIS



Where French Medicine Meets Beauty

London's **first French bilingual medical clinic**, combining over **30 years** of trusted medical expertise with state-of-the-art aesthetic care.

Your concerns, our expertise:

Cellulite • Dull or tired skin
Hair removal • Hair loss
Pigmentation & Sun damage
Loss of volume • Veins
Wrinkles & Fine lines

Our specialists deliver natural, subtle, and safe results, **all under one roof**, with a medical eye for precision, harmony, and a seamless, bespoke wellness and aesthetics experience.

Our aesthetic expertise includes:

Anti-wrinkle injections	Pressotherapy
Dermapen	Profilo
(Microneedling)	PRP
Laser Treatments	Radiofrequency
Laser Hair Removal	



198-200 Earls Court Road, SW5 9QF  Earls Court

ERMANNO



SCERVINO



London 199 Sloane Street / Harrods, International Designer, First Floor ermannoscervino.com

Social / People



LEFT:
Guests at the
Saatchi Gallery
launch party



Stephen
Fry



Ambika Mod



Ekow Eshun and
Katy Wickremesinghe



Guests at the
Saatchi Gallery
launch party



Michael
Oduwale

ARTY PARTY

CHELSEA ARTS FESTIVAL

The inaugural Chelsea Arts Festival saw Chelsea celebrate four jam-packed days of creativity and culture. Prominent creatives from Malala to Twiggy attended the festival, which included talks, debates, readings, comedy, music, dance and more. Alongside the ticketed events, the streets were filled with performances, art markets and

entertainment
for all the
family.



Kate
Mosse



Twiggy



Rory
Kinnear



Guests at the
Saatchi Gallery
launch party



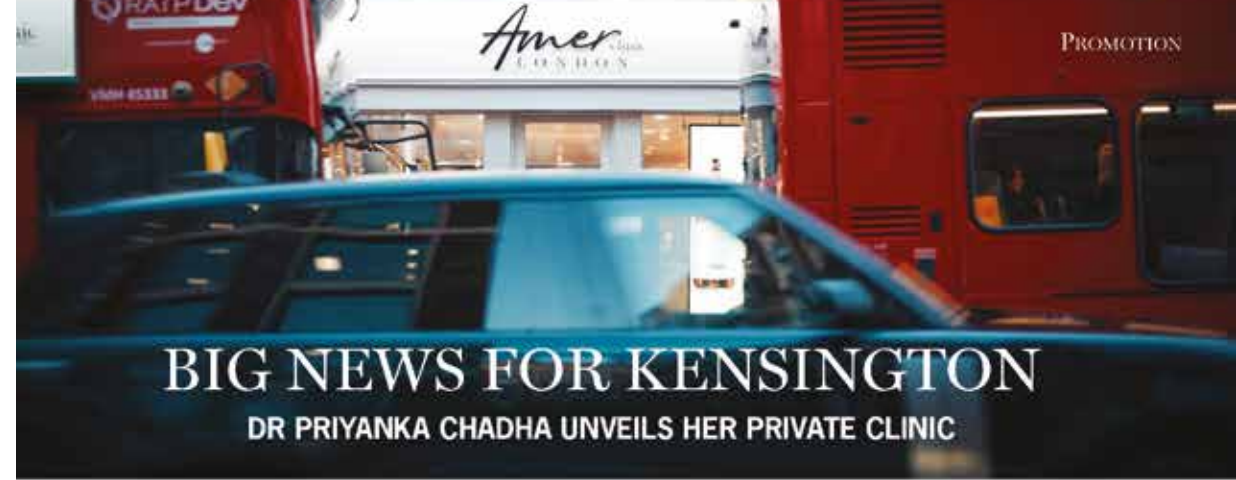
Daniel
Lismore



Rupert Everett



A party guest and
Zandra Rhodes



Kensington is buzzing with anticipation as renowned consultant plastic surgeon Dr. Priyanka Chadha - MBBS, BSc, DPMSA, MSc, FRCS (Plast) - opens the doors to Amer Clinic, London!

After years of global leadership in aesthetic medicine and co-founding Acquisition Aesthetics, one of the UK's largest award-winning training academies, Dr. Chadha is thrilled to establish her roots in the heart of Kensington. Now, you can enjoy a luxurious, evidence-based, and personalized experience just minutes from the park and the underground station.

Why Kensington, why now?

"I've dedicated over 13 years to teaching and lecturing in aesthetic medicine, witnessing the evolution of this specialty," Dr. Chadha explains. "Few push the boundaries, understand the evidence, and deliver results like I do. Amer

Clinic is a sanctuary of excellence in an industry often marred by uncertainty. As a founder, educator and mother of three, I understand the real-life juggle; patients need world-class care delivered with warmth, efficiency and zero fuss."

World-class expertise, Right at Your Doorstep

- **Award-Winning Surgeon & Educator:** With over 50 national and international scholarships and accolades to her name.
- **International Faculty:** Dr. Chadha has trained over 10,000 doctors and surgeons worldwide in advanced injectable techniques.
- **Evidence-Based Approach:** Leading clinical trials and peer-reviewed publications, ensuring a track record of safe, natural outcomes.

"My mission is to enhance what's uniquely you - never to change you. Patients deserve results that feel effortless, timeless, and authentically theirs," says Dr. Priyanka Chadha.

Signature, Doctor-Designed Treatments

At Amer Clinic, we specialize in subtle, proportionate rejuvenation with minimal downtime:

• Full-Face Rejuvenation & Contouring:

Tailored holistic long-term aesthetic plans, featuring dermal fillers, anti-wrinkle treatments, and collagen stimulators to gently lift the mid-face, refine the jawline, and restore harmony.



- **Advanced Skin & Laser Treatments**
 - **Body Contouring**
- Every treatment begins with a thorough assessment and a clear, customized plan. No pressure, no "one-size-fits-all" packages - just honest guidance and results that shine in real life, not just on camera. Now welcoming new patients"

Book a consultation* to explore a plan tailored to you and experience why so many practitioners trust Dr Priyanka Chadha to teach them, while patients trust her to treat them.



Amer Clinic London
13 Kensington Church St,
London W8 4LF
T: 020 8050 8830
patients@amerclinic.com
amerclinic.com



Neighbours in need

The Kensington and Chelsea Foundation's Corporate Patron Scheme offers local businesses a unique opportunity to support the borough, by providing essential funding for grassroots projects and accessing meaningful volunteering opportunities that make a real difference.

As we approach the festive period, many of our most vulnerable residents in Kensington and Chelsea are struggling. Some are lonely and isolated, while others cannot afford to heat their homes or put food on the table. The rising cost of living has affected households across the borough – from elderly residents living alone to families with young children – and we know that Christmas will be especially tough for many this year.

With your support, we can keep residents warm, fed and connected this winter. We know that our Winter Warmth and Cash First grants have already helped those most in need by covering energy bills, providing essential items and offering advice and support to help people manage their budgets.

In the past year, we have:

- Prevented a vulnerable resident from being evicted and helped them to get back on top of their bills.
- Supported a resident with a brain injury to access disability support and their private pension.



CAN YOU HELP A LOCAL RESIDENT TO HEAT THEIR HOME AND PUT FOOD ON THE TABLE THIS WINTER?



- Ensured a resident recovering from cancer treatment could keep their heating on when they needed it most.

The difference this support makes is best told by those who received it:

"It saved me."

"It gives hope whilst in hopelessness."

"It is a life-saver... it made a huge difference in coping."

"It's a great relief I could buy some fresh food instead

of relying upon food banks. I could buy an Oyster card so I can travel to hospital appointments."

Our work has also helped isolated residents stay connected – joining social activities, attending community events and accessing therapeutic opportunities such as gardening, cooking and creative writing. These small but vital lifelines prevent loneliness from spiralling into crisis and remind people they are not alone.

As the winter evenings draw nearer, please help us continue to support vulnerable residents through the darker, colder months. Your gift could heat homes, put food on the table and keep community services running when people need them most.

Please consider donating whatever you can, today.

• £100 could provide an immediate lifeline to a family unable to buy food and essentials.

• £350 could fund a Christmas meal in a warm hub for 50 vulnerable residents.

• £500 could cover the energy bill of a household struggling to stay warm this winter.

Together, we can ensure no one in our community is left cold, hungry or alone.

To find out more or to make a donation, please visit
thekandcfoundation.com

HEALTH AND WELLNESS REJUVENATE, REGENERATE, RESTORE

Whether you are looking to optimise your health as a prevention or longevity enthusiast, or dealing with a health challenge and are tired of searching for solutions without side effects, The Wellness Lab offers curated therapies that work with your immune system to upregulate mitochondrial function and reduce systemic inflammation – the primary cause of most chronic diseases.

Our philosophy is that the body has an innate ability to heal itself when given the right resources. It is hardwired for survival, vital functions, repair, and detoxification. At The Wellness Lab, we use natural resources at therapeutic doses, believing that the body needs extra energy and support when it is healing itself.

These therapies work in synergy to reduce inflammation, improve mitochondrial efficiency, protect against oxidative stress, and support long-term regeneration and recovery – delivering benefits that last well beyond each session. All of this is supported by a team of experienced doctors and nurses who guide each protocol with clinical precision and care.

Hyperbaric Oxygen Therapy significantly increases cellular oxygen levels by delivering oxygen under controlled pressure, accelerating healing and modulating the immune system.

Photobiomodulation uses red and near-infrared light to stimulate cellular activity, reduce inflammation, and aid regeneration.

Ozone Therapy introduces medical ozone to activate oxygen metabolism and modulate the immune system. It is also a potent antimicrobial and virucidal agent.

Molecular Hydrogen Therapy acts as a selective antioxidant, reducing oxidative stress and free radical damage, which is a precursor to degeneration, diseases, and cellular ageing.

Intravenous Therapy delivers nutrients directly into the bloodstream through bespoke formulations tailored to individual needs.

Lymphatic Drainage encourages the movement of lymphatic fluid, reducing fluid retention and supporting detoxification.

This is not about temporary solutions, but a dedicated space for meaningful, long-term improvements in health, wellbeing, and longevity.

Clients come with different goals – more energy, faster recovery, better cognitive function, enhanced gut health, or support with ongoing health conditions – but they share one belief: health is the most intelligent investment they can make.

www.thewellnesslab.com

Tel: 07724601630

Instagram: @the.wellness.lab

OUR PHILOSOPHY IS SIMPLE; GIVEN THE RIGHT RESOURCES, OUR BODY HAS THE INNATE WISDOM TO HEAL ITSELF. EVERY THERAPY IS CHOSEN FOR ITS CLINICAL CREDIBILITY AND ABILITY TO ENHANCE THE BODY'S NATURAL REPAIR SYSTEMS.

Beauty / News

VISIT PETER JONES on November 13 at 3pm to find your perfect Christmas party look. The Lancôme team will be on hand to discuss tips and tricks to elevate your beauty routine for the festive season (think bold eyes, glowy skin and a touch of sparkle). Personal stylists will then help you to select clothes, jewellery and accessories to pair with your party look. Tickets cost £10 and can be redeemed against any Lancôme or fashion purchases on the day.
Sloane Square

COSMETICS À LA CARTE has had a store makeover, including a new "blush bar" where you can create a custom cheek palette featuring blushers, bronzers, highlighters and contouring powders. Senior makeup artists will be on hand to ensure that each shade in your palette perfectly matches your complexion, allowing you to leave with glowing skin.
192 Pavilion Road

A GOURMAND fragrance for candy lovers, Queens Caramel, £126 for 50ml, is the latest scent by Ellis Brooklyn. It's a heady mix of caramel, maple sugar, white chocolate, pink salt and milky musks: an indulgent, addictive fragrance that will get lots of compliments.
Space NK, 27 Duke of York Square

PROMOTION

THE POWER OF HYDROGEN:

Wellness and Longevity Redefined at SUHAKU Space in South Kensington

REVITALISE YOUR BODY AND MIND WITH THE SMALLEST MOLECULE IN THE UNIVERSE

Step into SUHAKU Space, a Japanese wellness sanctuary in South Kensington, where science meets serenity. Hydrogen, the tiniest molecule with the biggest of impacts, neutralises harmful free radicals at the cellular level, helping reduce stress, inflammation, and fatigue, while supporting overall wellness and longevity. Come out feeling radiant, energised, and renewed.

"THE RESULT?"

PROFOUND RELAXATION, INCREASED ENERGY AND A REVITALISED BODY, BRINGING YOU BOTH WELLNESS AND LONG-TERM VITALITY."

Bespoke Treatments for Modern Life

Choose from six tailored treatments for stress relief, detoxification, anti-ageing, peak performance, anti-inflammation and recovery from screen fatigue.

While hydrogen water has become a popular trend in the field of wellness, SUHAKU Space takes it a step further: our hydrogen inhalation therapy delivers molecular hydrogen directly into the whole body, making it much more powerful and effective than drinking hydrogen water. Clients recline in elegant surroundings, inhaling hydrogen through a comfortable nasal cannula or goggles, while skilled Japanese therapists apply acupressure working upwards from your feet to your head. The result? Profound relaxation, increased energy and a revitalised body, bringing you both wellness and long-term vitality.

Exclusive Wellness for the Discerning

Home-use hydrogen generators are also available, allowing you to bring this cutting-edge therapy into the privacy of your home or workplace. Treatments start from only £40, combining the pleasure of being pampered with transformative health benefits.

Where modern science meets Japanese tradition - your sanctuary of wellness and longevity.

SUHAKU Space is much more than a salon: it's a luxury retreat where wellness, relaxation, and long-term vitality converge.

(More information at suhaku.com)





JO MALONE HAS opened a store on the King's Road. Visitors can expect bespoke service, with expert stylists on hand to help you select a new signature scent or a perfect gift. If you'd like to add a final personal touch, you can even have your chosen perfume bottle engraved with a date, initials or special message.
17 King's Road



THE FIRST UK FLAGSHIP clinic for Adare Dermatology has opened in Chelsea. Founder and medical director Dr Naomi Mackle specialises in a range of dermatological conditions including psoriasis and eczema, skin cancer and aesthetic medicine. There is one-to-one dedicated care for each patient: the mole screening and sun health consultation is recommended post summer months.
18 Park Walk



ONE OF THE NEW up-dos from Duck & Dry, the Chelsea Tie (from £59) is a polished low or high up-do, finished with a statement silk bow. With hair accessories making a comeback this autumn, this style is one of two signature looks inspired by Chelsea and Soho, using Duck & Dry's 100 per cent silk scarves from the Silk Edit.
*Harvey Nichols,
109-125
Knightsbridge*



CUTTING-EDGE technology in the form of the biophotonic antioxidant scanner is now offered at Backstage in partnership with Francesca Giacomini, CEO of Francesca The Method. The device measures your body's antioxidant levels in 30 seconds, with a simple scan of your palm. It will tell you how well your body is protected against ageing, oxidative stress and energy loss.
335-337 King's Road



No
90
HARLEY STREET
DENTAL & IMPLANT CLINIC

Harley Street dentistry. Here for you.

For over 100 years, we've been part of your community, combining Harley Street-expertise, with the personal touch of a trusted local practice. Whether it's a check-up or a bespoke treatment plan, we're here to help you smile with confidence.

Experience bespoke dental care - book your private consultation

020 3553 1815 | harleystreetdentalandimplantclinic.co.uk

Part of  portman
dentex

My Chelsea / Helen Brocklebank

WHY IS CHELSEA THE PERFECT HOME FOR THE WALPOLE TOWNHOUSE?

Chelsea has been synonymous with British luxury and craftsmanship for centuries. The area's heritage as a creative hub – from artists and designers to independent boutiques and global flagship stores – reflects our members' shared dedication to creativity and innovation with a global outlook.

HELEN BROCKLEBANK IS CEO OF WALPOLE, THE OFFICIAL SECTOR BODY OF THE UK LUXURY SECTOR, WHICH HAS ITS HEADQUARTERS AT 2 CADOGAN GATE AS TOLD TO: ALICE CAIRNS

LEFT: DISHES FROM THE LALÉE AND THREE DARLINGS
BELOW: SMYTHSON STATIONARY

WHAT ARE YOUR FAVOURITE PLACES IN CHELSEA TO...

...EAT? The LaLee at The Cadogan never fails to impress, it perfectly balances relaxed sophistication with exceptional service and makes for a

perfect breakfast or lunch. Likewise, the private dining room at Beaverbrook Townhouse is really special if you're entertaining – and if having lunch with a friend the Bento Box in the main restaurant is a treat. I also rate the Three Darlings on Pavilion Road very highly – the set lunch menu is great value.

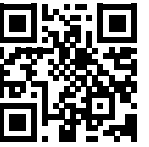
...SHOP? Beyond the obvious draw of Sloane Street, I love discovering the independent boutiques along Pavilion Road and the Duke of York Square. Along with Jo Malone London and The Conran Shop, I find myself fuelling my obsession with beautiful stationery in Smythson more often than I should.

...SPEND AN AFTERNOON? A walk through the Chelsea Physic Garden is restorative whatever the season, it's a hidden oasis of calm. I also love poking my head into the Saatchi Gallery, then perhaps a ride on my Brompton bike along the Chelsea Embankment. There's something rather special

about the combination of culture, green space, and Thames views.

DO YOU HAVE ANY ADVICE FOR WOMEN IN LEADERSHIP?

Trust your instincts and expertise and don't feel you need to adopt someone else's leadership style; authenticity is far more powerful than imitation. Balance confidence with curiosity and remain open to learning whilst being clear about your vision. Careers are a marathon, not a sprint, so finding your way to decompress is essential. For me, that's lifting weights which clears my mind and reminds me of the value of consistent, incremental progress. Finally, remember that leadership isn't about being perfect; it's about being purposeful, resilient, and bringing out the best in those around you.



Property Management & Surveying for London's finest residential buildings

From historic mansion blocks to contemporary luxury developments, we manage homes with precision, care & complete professionalism.

Faraday Property Management & Building Surveying
4th Floor, 20 Red Lion Street, Holborn, London, WC1R 4PS
www.faraday-property.com
enquiries@faraday-property.com
020 3206 0066





ROLEX WORLD SERVICE

A Rolex watch is forever. There are no limits to its lifetime. Our watchmakers, trained according to strict excellence criteria and assessed regularly by the brand, ensure your watch continues to perform with outstanding reliability and exceptional beauty. We welcome you to one of our Official Retailers or Service Centres, part of an extensive worldwide network. Whether it is adjusting the bracelet length or conducting a complete overhaul, every type of servicing for your Rolex can be entrusted to one of these authorised centres. The Rolex World Service.



OYSTER PERPETUAL DATEJUST 41

WATCHES &
SWITZERLAND
KNIGHTSBRIDGE

